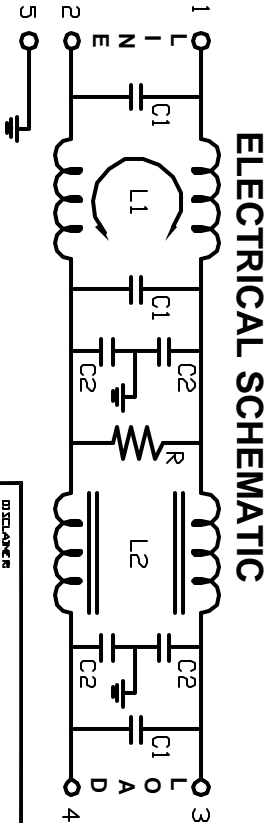
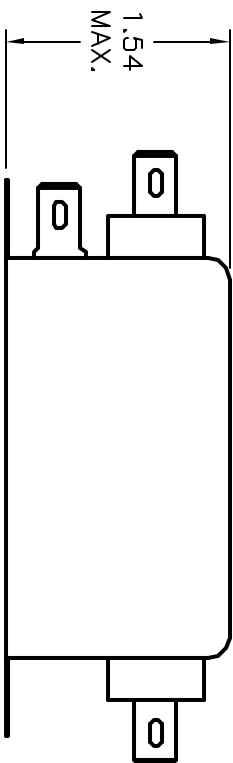
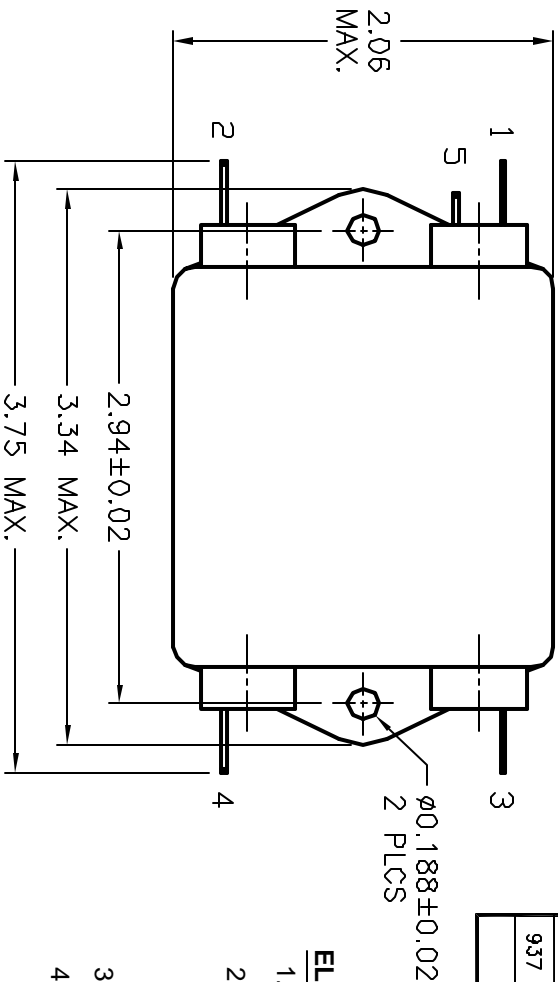


ALL RIGHTS RESERVED. NO PORTION OF THIS PUBLICATION, WHETHER IN WHOLE OR IN PART CAN BE REPRODUCED WITHOUT THE EXPRESS WRITTEN CONSENT OF SPC TECHNOLOGY.



REVISIONS				DOC. NO. SPC-FD05 * Effective: 12/21/98 * DCP No. 860			
DCP #	REV	DESCRIPTION	DRAWN	DATE	CHECKD	DATE	APPRVD
937	A	RELEASED	HYO	5/26/00	JJC	8/18/00	DJC

ELECTRICAL CHARACTERISTICS:

- VOLTAGE RATING: 115/250V
- CURRENT RATING:
 - AT 115VAC: 6 A RMS MAX.
 - AT 250VAC: 6 A RMS MAX.
- OPERATING FREQUENCY: 50 ~ 60Hz
- LEAKAGE CURRENT: EACH LINE TO GROUND
 - AT 115VAC, 60Hz: 0.50 mA MAX.
 - AT 250VAC, 50Hz: 1.00 mA MAX.
- HIPOT RATING (FOR ONE MINUTE):
 - LINE TO GROUND: 2250 VDC
 - LINE TO LINE: 1450 VDC
- MINIMUM INSERTION LOSS IN dB:

MHz	.01	.05	.10	.15	.50	1.0	5.0	10	30
COM. MODE	5	18	20	25	30	45	55	55	45
DIF. MODE	0	10	20	25	35	50	50	50	45

- AMBIENT TEMPERATURE: 40 °C
- OPERATING TEMPERATURE: -25 °C to +85 °C

DISCLAIMER
ALL STATEMENTS AND TECHNICAL INFORMATION CONTAINED HEREIN ARE BASED UPON INFORMATION AND/OR TESTS WE BELIEVE TO BE ACCURATE AND RELIABLE. SINCE CONDITIONS OF USE ARE BEYOND OUR CONTROL, THE USER SHALL DETERMINE THE SUITABILITY OF THE PRODUCT FOR THE INTENDED USE AND ASSUME ALL RISK AND LIABILITY WHATSOEVER IN CONNECTION THEREWITH.



SPC TECHNOLOGY



UNLESS OTHERWISE SPECIFIED, DIMENSIONS ARE FOR REFERENCE PURPOSES ONLY.

DRAWN BY:	DATE:
HISHAM ODISH	5/26/00
CHECKED BY:	DATE:
JOHN COLE	8/1/00
APPROVED BY:	DATE:
DANIEL CAREY	9/7/00

DRAWING TITLE:

EMI FILTER

SIZE	DWG. NO.	ELECTRONIC FILE	REV
A	SPC9722	95B0868.DWG	A
SCALE:	NTS	U.O.M.: INCHES	SHEET: 1 OF 1