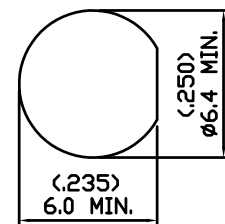
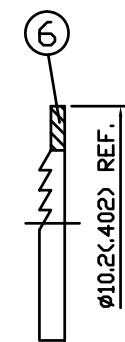
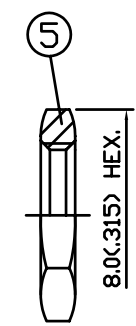
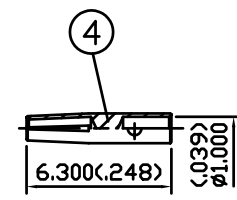
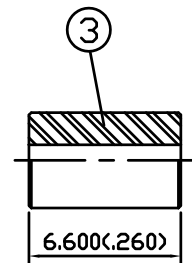
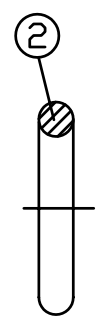
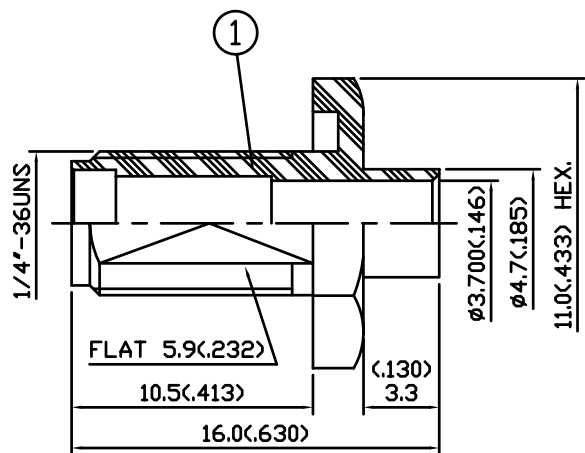


NO	DESCRIPTION	DATE
⚠	BACKGROUND FORMAT UPDATED	07.05.02



MOUNTING HOLE

NOTES: UNLESS OTHERWISE SPECIFIED

1. BODIES: BRASS PER JIS-C3604
2. CENTER CONTACT: BERYLLIUM COPPER PER JIS-C1730B
3. INSULATION: TEFLON PER ASTM D1457 AND ASTM D1710
4. CONNECTOR INTERFACE PER MIL-STD-348A
5. PART TO BE CLEAN AND FREE OF BURRS

NO	DESCRIPTION	MATERIAL	Q'TY	FINISH
6	WASHER	BRASS	1	GOLD 3μ " MIN.
5	NUT	BRASS	1	GOLD 3μ " MIN.
4	CENTER CONTACT	BERYLLIUM COPPER	1	GOLD 50μ " MIN.
3	INSULATION	TEFLON	1	NONE
2	O-RING	SILICONE	1	BLACK
1	BODY	BRASS	1	GOLD 3μ " MIN.

製圖	DRAWN	TOLERANCE	品名	19-58-1	RG402 (50Ω)	日期	DATE	版次	REV.
	梁齡允								
檢圖	CHECK	.XX ±0.1	單位	DWG.NO. 19-0192					
	沈淑美	.XXX ±0.05	mm(in)	佳楠精密電子股份有限公司					
認定	APPROVAL	ANGLE ±5°	比例	CHIN NAN PRECISION ELECTRONICS CO.,LTD.					
	余賢德		4:1						