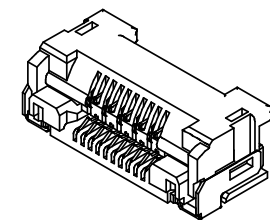


適合 FFC 推奨寸法  
 APPLICABLE FFC  
 RECOMMENDED DIMENSION  
 (仕上がり厚さ: 0.3 ±0.03)  
 (THICKNESS: 0.3 ±0.03)



注記  
NOTE

1. 材質

MATERIAL

- ハウジング: 液晶ポリマー ガラス充填 UL94V-0  
HOUSING: LIQUID CRYSTAL POLYMER (GLASS FILLED), UL94V-0
- アクチュエータ: 9Tナイロン ガラス充填 UL94V-0  
ACTUATOR: POLYAMIDE 9T (GLASS FILLED), UL94V-0
- ターミナル: リン青銅、ニッケル下地金メッキ又は半田メッキ又は錫ビスマスメッキ  
TERMINAL: PHOSPHOR BRONZE, GOLD OR TIN-LEAD OR TIN-BISMUTH OVER NICKEL PLATING.
- ネイル: リン青銅、ニッケル下地錫銅メッキ又は錫メッキ  
NAIL: PHOSPHOR BRONZE, TIN-COPPER OR TIN OVER NICKEL PLATING.

△ ソルダータール半田付け面のズレ量、及び金具半田付け面のズレ量は、基準面 G に対し  
 下方向に 0~0.3 の範囲にあるものとする。  
 又、相互のパラッキ量は 0.1 MAXIMUM とする。  
 MISALIGNMENT OF SOLDER TAILS AND FITTING NAILS FROM G UPPER DIRECTION : 0 ~ 0.3  
 OFFSET BETWEEN SOLDER TAILS AND FITTING NAILS : 0.1 MAXIMUM.

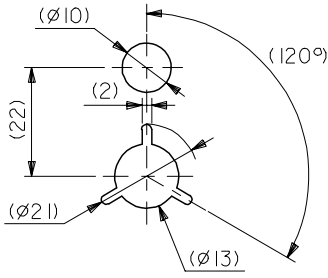
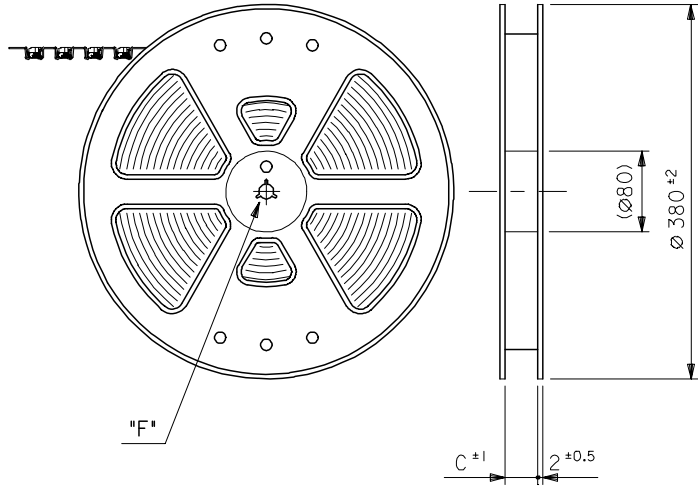
△ 偶数極に適用  
 APPLY FOR EVEN CIRCUIT.

参考基板レイアウト  
 P.C. BOARD PATTERN DIM. (REF.)

LEAD-FREE	32.25	31.3	24.5	31.7	TIN	500617-5093	500617-5048	50	
					TIN-COPPER	TIN-LEAD	500617-5092		500617-5038
	TIN	GOLD	500617-5091	500617-5028					
	TIN	TIN-BISMUS	500617-5090	500617-5018					
	D	C	B	A	NAIL	TERMINAL	EMBOSSED TAPE	MATERIAL NO.	CIRCUITS
					PLATING	ORDER No. オーダー番号			

REVISED EC NO: J2009-0003 DRWIN: MWABEI 2008/07/08 CHKD: THARYAMA 2008/07/09 APPR: NUKITA 2008/07/09	DESCRIPTION	GENERAL TOLERANCES (UNLESS SPECIFIED)		DIMENSION STYLE		SCALE	DESIGN UNITS		THIRD ANGLE PROJECTION
				MM ONLY		---	METRIC		
		10 UNDER	±0.2	DRAWN BY	DATE	TITLE			
		10 OVER 30 UNDER	±0.25	SMATSUZAKI	2003/09/10	0.5 FPC CONN. E/O R/A HSG ASS'Y (FPC TYPE) H=4.1			
		30 OVER	±0.3	CHECKED BY	DATE				
				APPROVED BY	DATE	MOLEX INCORPORATED			
		TYAMAGUCHI	2003/09/11	DOCUMENT NO.		SHEET NO.			
		DRAFT WHERE APPLICABLE MUST REMAIN WITHIN DIMENSIONS		SEE TABLE		SD-500617-001	1 OF 1		
		THIS DRAWING CONTAINS INFORMATION THAT IS PROPRIETARY TO MOLEX INCORPORATED AND SHOULD NOT BE USED WITHOUT WRITTEN PERMISSION							

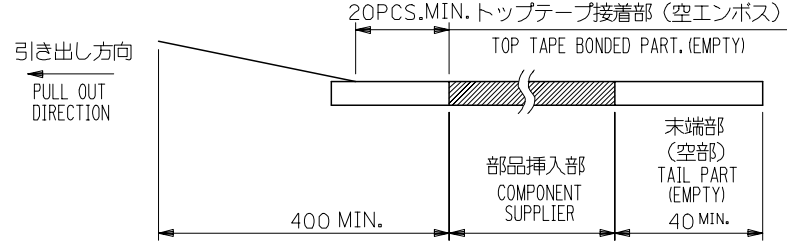
引き出し方向  
PULL OUT  
DIRECTION



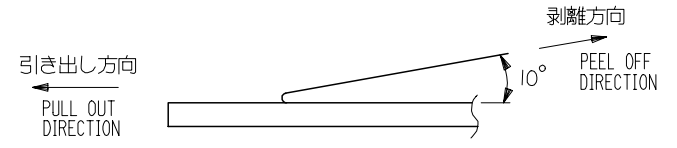
DETAIL "F"

NOTES

- 製品詳細寸法については図面 SD-500617-001 を参照下さい。  
RE DETAILED DIMENSION, SEE SD-500617-001
- 梱包数量：1600個/リール  
NUMBER OF CONNECTORS : 1600PCS/REEL
- リードテープ長さ LEAD TAPE LENGTH



- トップテープの剥離強度：0.1N ~ 0.7N(10.2gf ~ 71.4gf)  
(剥離方向は下図参照)  
尚、本規格値は出荷時に適用。(但し、輸送時に剥離が発生しないこと。)  
PEELING OFF FORCE OF TOP TAPE : 0.1N ~ 0.7N(10.2gf ~ 71.4gf)  
(PEELING DIRECTION AS SHOWN IN FOLLOWING FIG.)  
THIS REQUIREMENT SHOULD BE APPLIED AT SHIPMENT.  
PEEL OFF SHOULD NOT BE ALLOWED , DURING TRANSPORTATION.

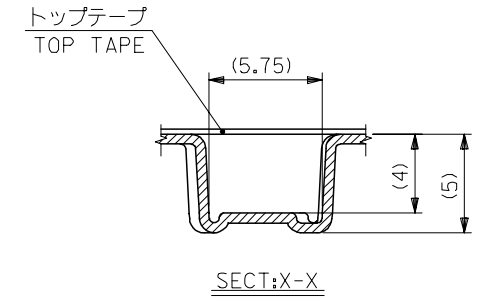
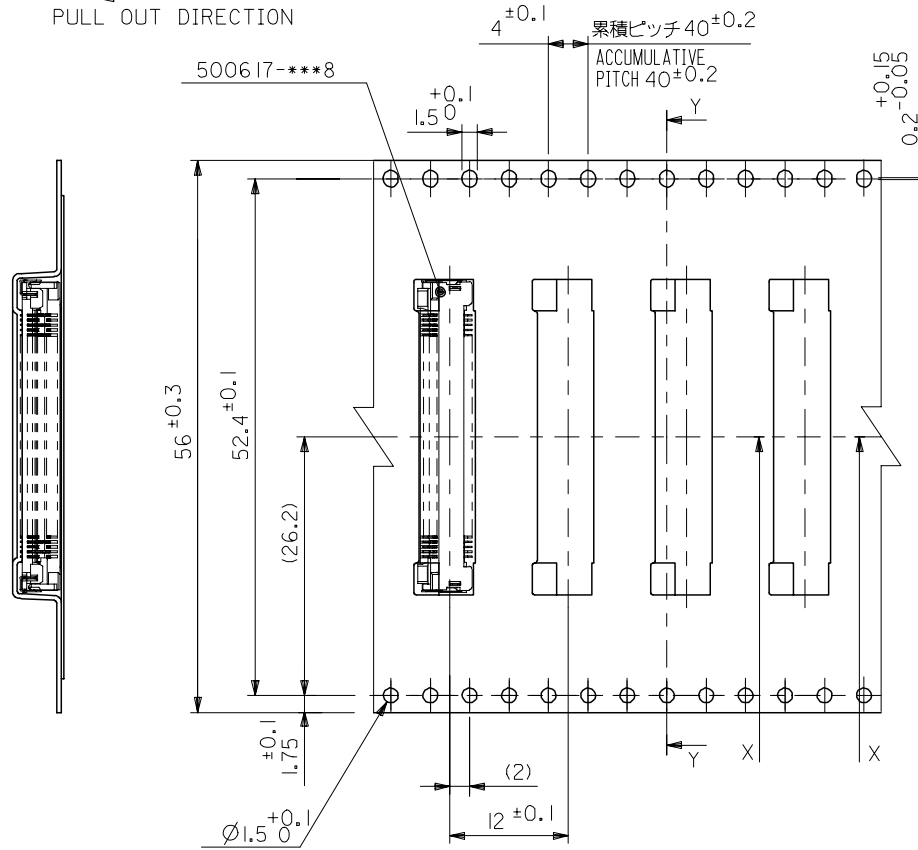
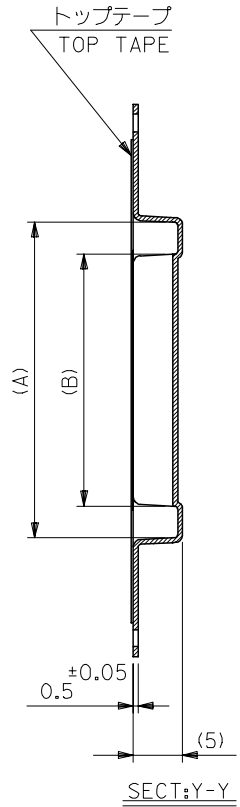


- 材料 (MATERIAL)  
キャリアテープ (CARRIER TAPE) : ポリプロピレン (POLYPROPYLENE)  
トップテープ (TOPTAPE) : PET, PE, PEF  
リール (REEL) : ポリスチレン (PS) <リサイクル材を含む>  
POLYSTYRENE(PS) <RECYCLE MATERIAL CONTAINED>

REVISED EC NO: J2005-2483 DRAWN: TAKEMOTO 2005/04/13 CHKD: TANAKA 2005/04/14 APPR: NUKITA 2005/04/19	GENERAL TOLERANCES (UNLESS SPECIFIED)		DIMENSION STYLE MM ONLY		SCALE ---	DESIGN UNITS METRIC	THIRD ANGLE PROJECTION
	10 UNDER	±0.2	DRAWN BY SMATSUZAKI	DATE 2003/09/10	TITLE 0.5 FPC CONN. E/O R/A EMBOSS TAPE PACKAGE		
	10 OVER 30 UNDER	±0.25	CHECKED BY SAIHARA	DATE 2003/09/11	MOLEX INCORPORATED		
	30 OVER	±0.3	APPROVED BY TYAMAGUCHI	DATE 2003/09/11	DOCUMENT NO. SD-500617-002	SHEET NO. 1 OF 2	
	ANGULAR	±3 °	MATERIAL NO. SEE SHEET 2 OF 2				
DRAFT WHERE APPLICABLE MUST REMAIN WITHIN DIMENSIONS		THIS DRAWING CONTAINS INFORMATION THAT IS PROPRIETARY TO MOLEX INCORPORATED AND SHOULD NOT BE USED WITHOUT WRITTEN PERMISSION					

10 9 8 7 6 5 4 3 2 1

引き出し方向  
PULL OUT DIRECTION



56mm幅キャリアテープ  
56mm WIDTH CARRIER TAPE

LEAD-FREE	56	57.5	25.6	32	TIN	TIN-LEAD	500617-5093	50
					TIN-COPPER	GOLD	500617-5092	
					TIN	TIN-BISMUTH	500617-5091	
					NAIL	TERMINAL	500617-5090	
キャリアテープ幅 CARRIER TAPE WIDTH	C	(B)	(A)	PLATING	MATERIAL NO.	種数 CIRCUIT		

REVISED EC NO: J2005-2483 DRAWN: TAKEMOTO 2005/04/13 CHKD: TANAKA 2005/04/14 APP: NUKITA 2005/04/19	GENERAL TOLERANCES (UNLESS SPECIFIED)		DIMENSION STYLE MM ONLY		SCALE ---	DESIGN UNITS METRIC	THIRD ANGLE PROJECTION	
	10 UNDER	± 0.2	DRAWN BY SMATSUZAKI	DATE 2003/09/10	TITLE 0.5 FPC CONN. E/O R/A EMBOSS TAPE PACKAGE			
	10 OVER 30 UNDER	± 0.25	CHECKED BY SAIHARA	DATE 2003/09/11	APPROVED BY TYAMAGUCHI 2003/09/11			
	30 OVER	± 0.3	APPROVED BY TYAMAGUCHI 2003/09/11		MOLEX INCORPORATED			
	ANGULAR ± 3 °	DRAFT WHERE APPLICABLE MUST REMAIN WITHIN DIMENSIONS		MATERIAL NO.		DOCUMENT NO. SD-500617-002	SHEET NO. 2 OF 2	
		SIZE A3		THIS DRAWING CONTAINS INFORMATION THAT IS PROPRIETARY TO MOLEX INCORPORATED AND SHOULD NOT BE USED WITHOUT WRITTEN PERMISSION				