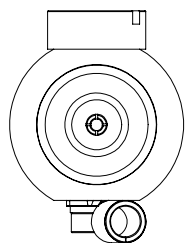
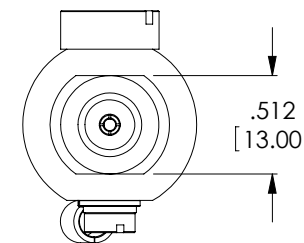
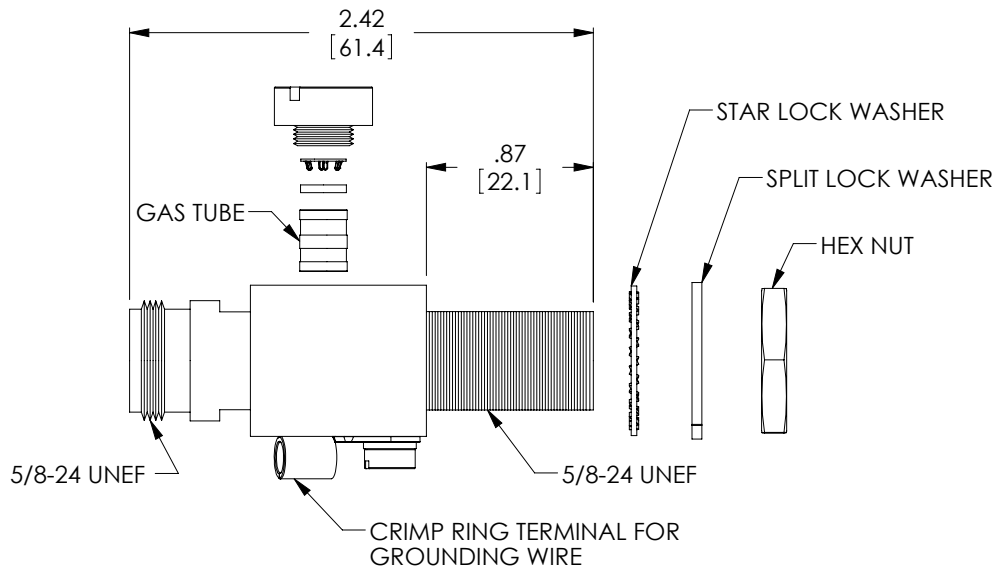


THE INFORMATION CONTAINED IN THIS DRAWING IS THE SOLE PROPERTY OF L-COM, INC. ANY REPRODUCTION IN PART OR WHOLE WITHOUT THE WRITTEN PERMISSION OF L-COM, INC. IS PROHIBITED.

REVISIONS			
REV	DESCRIPTION	DATE	APPROVED
A	INITIAL RELEASE	8/25/10	D.GRIFFIN



N-FEMALE



N-FEMALE BULKHEAD

ELECTRICAL SPECIFICATIONS	
FREQUENCY RANGE	0 - 6 GHz
VSWR	1 : 1.2 MAX (0 - 6 GHz)
INSERTION LOSS	0.6 dB MAX (0 - 6 GHz)
IMPEDANCE	50 OHM
GAS TUBE BREAKDOWN VOLTAGE	90 V ± 20%
MECHANICAL SPECIFICATIONS	
CONNECTORS	N-FEMALE TO N-FEMALE BULKHEAD
CONNECTOR BODY MATERIAL	NICKEL PLATED BRASS
BODY MATERIAL	NICKEL PLATED BRASS
PIN MATERIAL	GOLD PLATED BRASS
O"-RING	RUBBER
DIMENSIONS (MAX)	2.6 X 0.9 X 1.2 IN (68 X 23 31mm)
WEIGHT	0.25 LBS (0.11 kg)

NOTES:

- LIGHTNING PROTECTOR SHALL BE INDIVIDUALLY PACKAGED IN ACCORDANCE WITH L-COM PACKAGING SPEC. PS-0031.

RoHS Compliant ✓

UNLESS OTHERWISE SPECIFIED, DIMENSIONS ARE IN INCHES [mm] OVERALL CABLE LENGTH TOLERANCE: ≤12 [305] = +1 [25] / -0 >12 [305] ≤60 [1524] = +2 [51] / -0 >60 [1524] ≤120 [3048] = +4 [102] / -0 >120 [3048] ≤300 [7620] = +6 [152] / -0 >300 [7620] = +3% / -0% ALL OTHER DIMENSIONAL TOLERANCES: .X = ± .2 .XX = ± .02 .XXX = ± .005	APPROVALS DRAWN BY D. PARHAM CHECKED BY J. RUST APPROVED BY K. BURGNER	DATE 08/23/2010 08/24/2010 08/25/2010	45 BEECHWOOD DRIVE NORTH ANDOVER, MA 01845	
	CONFIGURATION DETAILS OF UNDIMENSIONED FEATURES MAY VARY COLOR VARIATIONS MAY OCCUR	CATEGORY LIGHTNING PROTECTOR PRODUCT DESCRIPTION LP,N-FEMALE TO N-FEMALE 0-6GHz		
PROJECTION 	SIZE A	FSCM NO. 43321	DWG. NO. AL6-NFNFBW-9	REV. A
SCALE: NONE		CAD FILE: AL6-NFNFBW-9.SLDDRW		SHEET 1 OF 1