

www.icmcorp.net

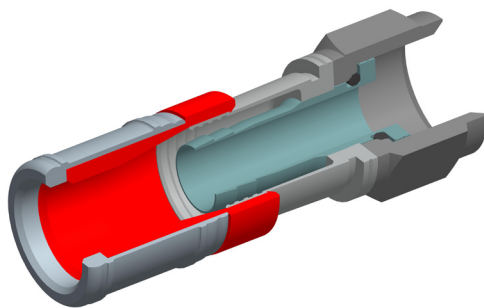
The FS59U is our Universal "F" type connector that fits most RG59 standard, tri-shield, and quad-shield coaxial cable.



CPLCCT-SLM
Utilize This Tool

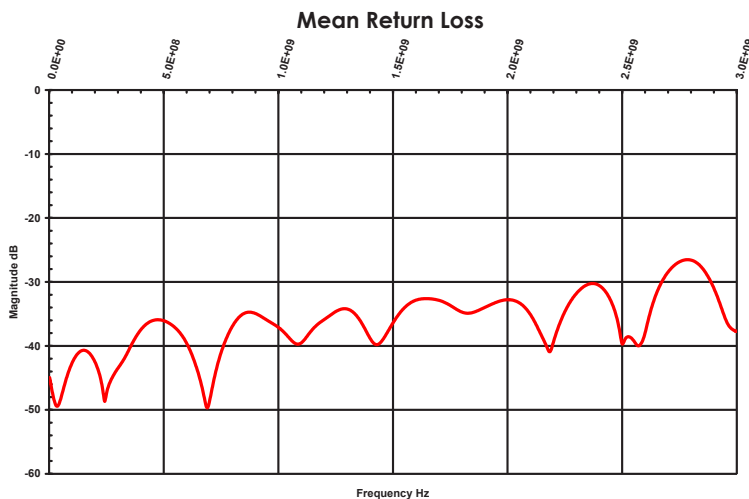
Specifications:

- 75 Ohm Construction
- DC-1 GHz > 30 dB Return Loss < 1.07 VSWR
- DC-2 GHz > 27 dB Return Loss < 1.10 VSWR
- DC-3 GHz > 23 dB Return Loss < 1.16 VSWR
- Cable Pullout Force Exceeding 65 in/lbs.
- Body Material Brass
- Body Material (Plating) Nickel



Coax Sizing (inches)	Min ~ Max
Center	.0317 ~ .0399
Dielectric	.144 ~ .157
Outer Jacket	.232 ~ .273

Coax Sizing (mm)	Min ~ Max
Center	.81 ~ .86
Dielectric	3.66 ~ 3.99
Outer Jacket	5.89 ~ 6.93



Frequency (Hz)	dB
5 MHz	-45.5 dB
15 MHz	-47.4 dB
550 MHz	-37.2 dB
750 MHz	-41.1 dB
1000 MHz	-37.1 dB
2000 MHz	-32.8 dB
3000 MHz	-37.7 dB

Lower return loss (dB) equates to less reflection through the connector while maintaining signal strength