

LIMIT & SAFETY SWITCHES

30mm Wide Limit Switches

- 30mm width
- IP65 double insulated plastic
- IP66 metal casing
- Snap action contacts
- approved

CE 10

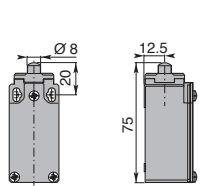


SPECIFICATION

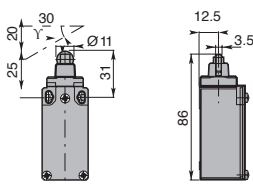
Rating	500V
Shock withstand	50g
Impulse withstand voltage	6kV
Working temperature	-25°C to +70°C
Switching frequency	3600 cycles/h
Load factor	0.5
Short circuit protection	10A gG fuse

IP66 METAL CASING	IP65 PLASTIC CASING	PLUNGER TYPE	MAX ACTUATION SPEED	ACTUATION/ NC OPERATION
CE10.00.AM	CE10.00.AP	Plain Plunger	0.5ms ⁻¹	15N/30N
CE10.00.BM	CE10.00.BP	Roller Plunger	0.3ms ⁻¹	12N/30N
CE10.00.GM	CE10.00.GP	Adjustable Rod Lever	1.5ms ⁻¹	0.10Nm/0.32Nm
CE10.00.HM	CE10.00.HP	Adjustable Rod Lever	1.3ms ⁻¹	0.10Nm/0.32Nm
CE10.00.EM	CE10.00.EP	Roller Lever Nylon	1.5ms ⁻¹	0.10Nm/0.32Nm
CE10.00.EM/50	CE10.00.EP/50	Rubber Roller Lever	1.5ms ⁻¹	0.10Nm/0.32Nm
CE10.00.FM	CE10.00.FP	Adjustable Roller Lever	1.5ms ⁻¹	0.10Nm/0.32Nm
CE10.00.FM/50	CE10.00.FP/50	Adjustable Rubber Roller Lever	1.5ms ⁻¹	0.10Nm/0.32Nm
CE10.00.IM	CE10.00.IP	Nylon Roller Lever	1.5ms ⁻¹	0.10Nm/0.32Nm
CE10.00.FRM/50	CE10.00.FRP/50	Adjustable Lever Adjustable Roller	1.5ms ⁻¹	0.10Nm/-
CE10.00.HLTM	CE10.00.HLTP	Nylon Actuator, Stainless Steel Spring	1.5ms ⁻¹	0.10Nm/0.32Nm

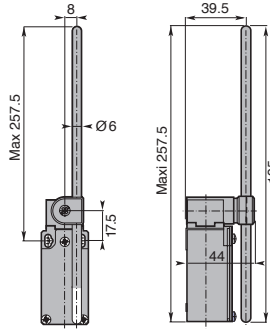
Plain Plunger



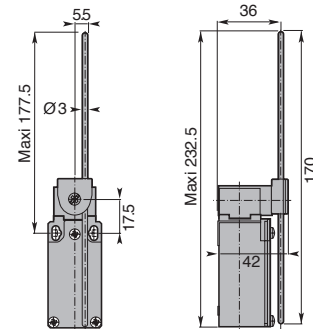
Steel Plunger



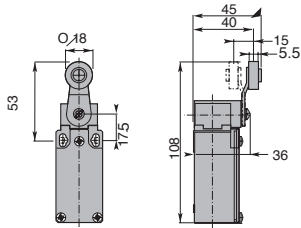
Adjustable Rod Lever



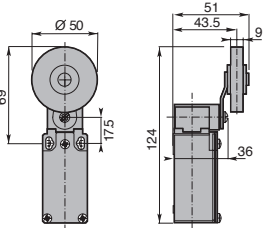
Adjustable Rod Lever



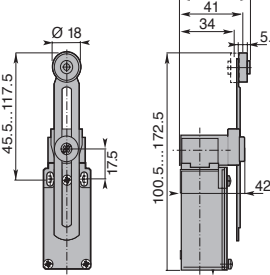
Roller Lever Nylon



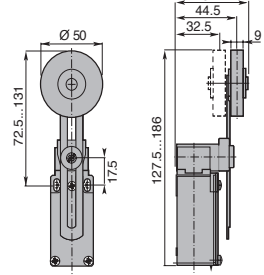
Rubber Roller Lever



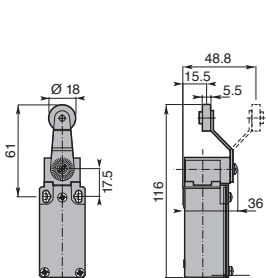
Adjustable Roller Lever



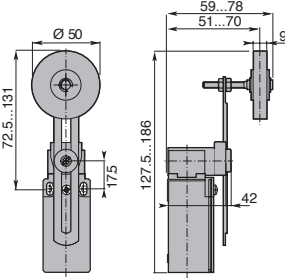
Adjustable Rubber Roller Lever



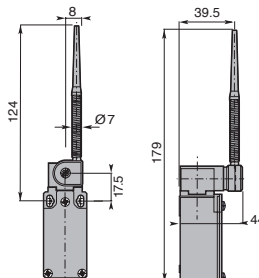
Nylon Roller Lever



Adjustable Lever Adjustable Roller



Nylon Actuator, Stainless Steel Spring





+44 (0)1638 716101
info@camdenboss.com
www.camdenboss.com

We operate a constant improvement policy,
our products are subject to change without notice.

CAMDENBOSS
ELECTRONICS & ENCLOSURES

LIMIT & SAFETY SWITCHES

40mm Wide Limit Switches

- 40mm width
- IP65 double insulated plastic
- IP66 metal casing
- Snap action contacts
-   approved

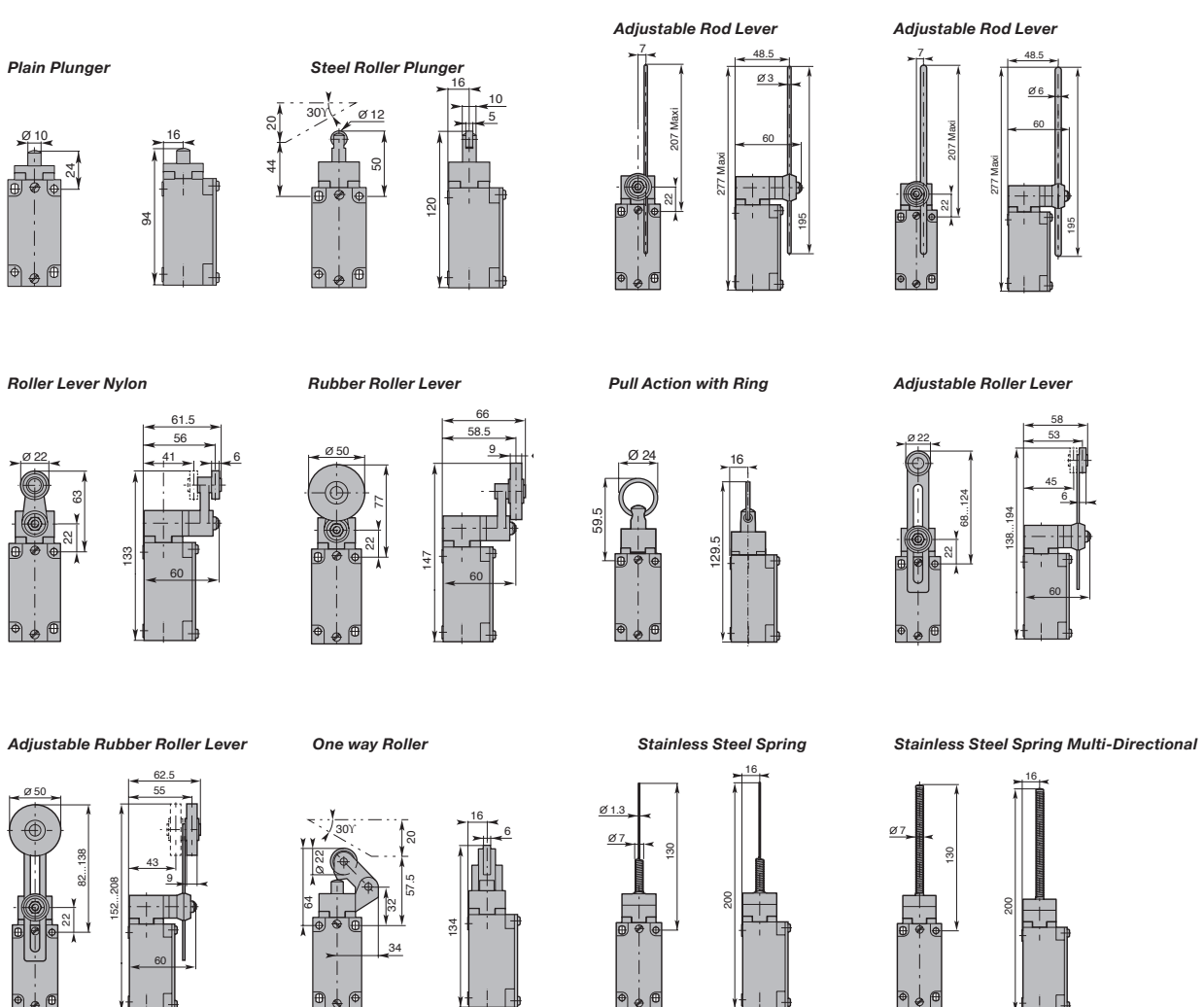
CE 41



SPECIFICATION

Rating	500V
Shock withstand	50g
Impulse withstand voltage	6kV
Working temperature	-25°C to +70°C
Switching frequency	3600 cycles/h
Load factor	0.5
Short circuit protection	10A gG fuse

IP66 METAL CASING	IP65 PLASTIC CASING	PLUNGER TYPE	MAX ACTUATION SPEED	ACTUATION/ NC OPERATION
CE41.00.AM	CE41.00.AP	Plain Plunger	0.5ms ⁻¹	30N/45N
CE41.00.BM	CE41.00.BP	Steel Roller Plunger	0.3ms ⁻¹	22N/40N
CE41.00.HM	CE41.00.HP	Adjustable Rod Lever	1.5ms ⁻¹	0.15Nm/0.30Nm
CE41.00.GM	CE41.00.GP	Adjustable Rod Lever	1.3ms ⁻¹	0.15Nm/0.30Nm
CE41.00.EM	CE41.00.EP	Roller Lever Nylon	1.5ms ⁻¹	0.15Nm/0.30Nm
CE41.00.EM/50	CE41.00.EP/50	Rubber Roller Lever	1.5ms ⁻¹	0.15Nm/0.30Nm
CE41.00.TM	CE41.00.TP	Pull Action with Ring	0.5ms ⁻¹	25N/-
CE41.00.FM	CE41.00.FP	Adjustable Roller Lever	1.5ms ⁻¹	0.15Nm/0.30Nm
CE41.00.FM/50	CE41.00.FP/50	Adjustable Rubber Roller Lever	1.5ms ⁻¹	0.15Nm/0.30Nm
CE41.00.KM	CE41.00.KP	One way Roller	1.5ms ⁻¹	12N/40N
CE41.00.LSM	CE41.00.LSP	Stainless Steel Spring	1.0ms ⁻¹	0.18Nm/-
CE41.00.LM	CE41.00.LP	Stainless Steel Spring Multi-Directional	1.0ms ⁻¹	0.18Nm/-



LIMIT & SAFETY SWITCHES

50mm Wide IP65 Limit Switches

- 50mm width
- IP65 double insulated plastic
- Snap action contacts
- Other types available
- approved

CE 20

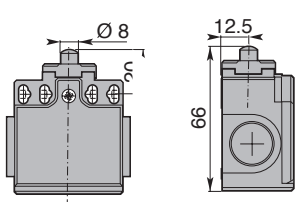


SPECIFICATION

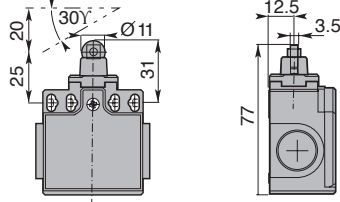
Rating	500V
Shock withstand	50g
Impulse withstand voltage	6kV
Working temperature	-25°C to +70°C
Switching frequency	3600 cycles/h
Load factor	0.5
Short circuit protection	10A gG fuse

IP65 PLASTIC CASING	PLUNGER TYPE	MAX ACTUATION SPEED	ACTUATION/ NC OPERATION
CE20.00.AP	Steel Plunger	0.5ms ⁻¹	15N/30N
CE20.00.BP	Steel Roller Plunger	0.3ms ⁻¹	12N/30N
CE20.00.FP	Adjustable Nylon Roller Lever	1.5ms ⁻¹	0.10Nm/0.32Nm
CE20.00.HLTP	Nylon Actuator with Stainless Steel Spring	1.5ms ⁻¹	0.10Nm/-
CE20.00.TP	Pull Action with Ring	0.5ms ⁻¹	0.30Nm/-
CE20.00.EP	Nylon Roller Lever	1.5ms ⁻¹	0.10Nm/0.32Nm
CE20.00.HP	Adjustable Stainless Steel Rod Lever	1.5ms ⁻¹	0.15Nm/-0/30Nm
CE20.00.IP	Nylon Roller Lever	1.5ms ⁻¹	0.10Nm/0.32Nm
CE20.00.FRP/50	Adjustable Lever with Adjustable Rubber Roller	1.5ms ⁻¹	0.10Nm/0.32Nm
CE20.00.CP	Plastic Roller	1.0ms ⁻¹	7N/24N
CE20.00.DP	Plastic Roller on Metal Plunger	1.0ms ⁻¹	7N/24N
CE20.00.EP/50	Rubber Roller Lever	1.5ms ⁻¹	0.10Nm/0.32Nm

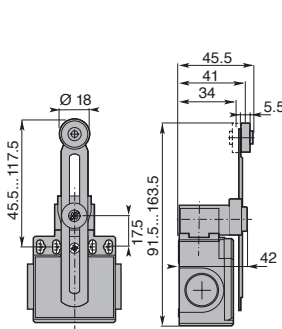
Steel Plunger



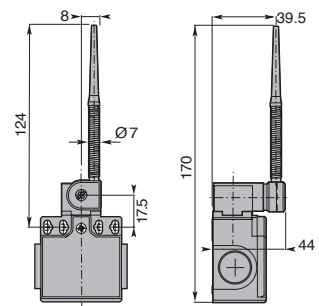
Steel Roller Plunger



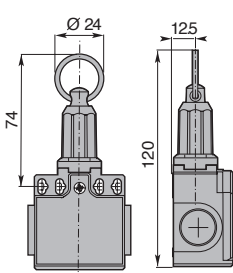
Adjustable Nylon Roller Lever



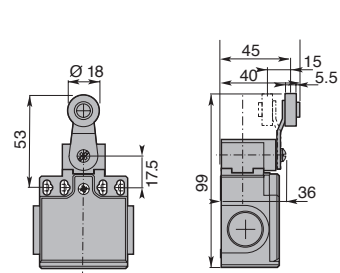
Nylon Actuator with Stainless Steel Spring



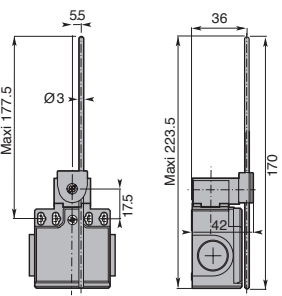
Pull Action with Ring



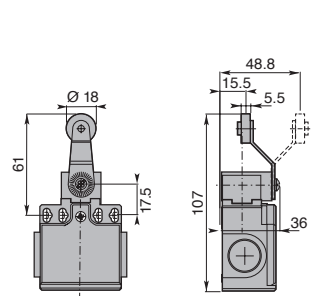
Nylon Roller Lever



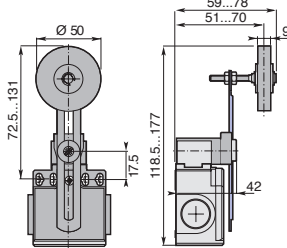
Adjustable Stainless Steel Rod Lever



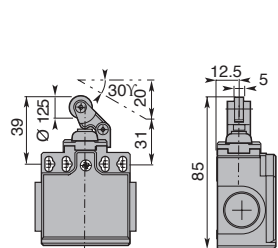
Nylon Roller Lever



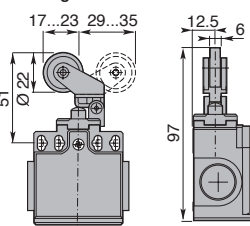
Adjustable Lever with Adjustable Rubber Roller



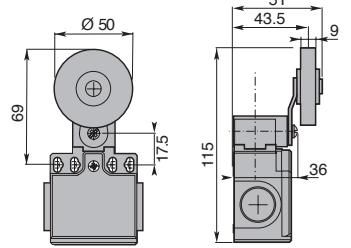
Plastic Roller



Plastic Roller on Metal Plunger



Rubber Roller Lever





+44 (0)1638 716101
info@camdenboss.com
www.camdenboss.com

We operate a constant improvement policy,
our products are subject to change without notice.

CAMDENBOSS
ELECTRONICS & ENCLOSURES

LIMIT & SAFETY SWITCHES

50mm Wide IP66 Limit Switches

- 50mm width
- IP66 metal casing
- Snap action contacts
- Other types available
-   approved

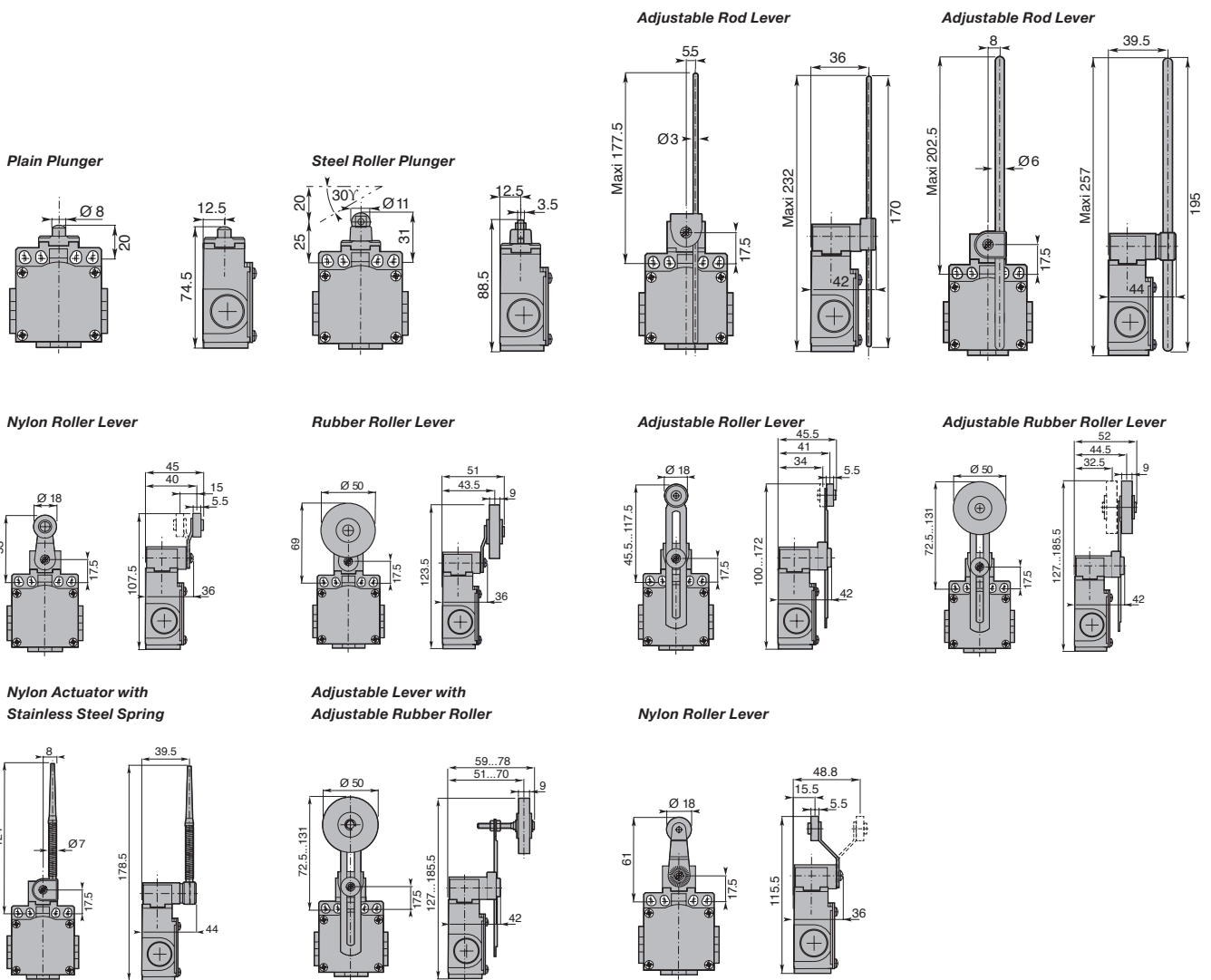
CE 21



SPECIFICATION

Rating	500V
Shock withstand	50g
Impulse withstand voltage	6kV
Working temperature	-25°C to +70°C
Switching frequency	3600 cycles/h
Load factor	0.5
Short circuit protection	10A gG fuse

IP66 METAL CASING	PLUNGER TYPE	MAX ACTUATION SPEED	ACTUATION/ NC OPERATION
CE21.00.AM	Plain Plunger	0.5ms ⁻¹	15N/30N
CE21.00.BM	Steel Roller Plunger	0.3ms ⁻¹	12N/30N
CE21.00.HM	Adjustable Rod Lever	1.5ms ⁻¹	0.10Nm/0.32Nm
CE21.00.GM	Adjustable Rod Lever	1.5ms ⁻¹	0.10Nm/0.32Nm
CE21.00.EM	Nylon Roller Lever	1.5ms ⁻¹	0.10Nm/0.32Nm
CE21.00.EM/50	Rubber Roller Lever	1.5ms ⁻¹	0.10Nm/0.32Nm
CE21.00.FM	Adjustable Roller Lever	1.5ms ⁻¹	0.10Nm/0.32Nm
CE21.00.FM/50	Adjustable Rubber Roller Lever	1.5ms ⁻¹	0.10Nm/0.32Nm
CE21.00.HLTM	Nylon Actuator with Stainless Steel Spring	1.5ms ⁻¹	0.10Nm/-
CE21.00.FRM/50	Adjustable Lever with Adjustable Rubber Roller	1.0ms ⁻¹	0.10Nm/-
CE21.00.IM	Nylon Roller Lever	1.0ms ⁻¹	0.10Nm/0.32Nm



LIMIT & SAFETY SWITCHES

60mm Wide Limit Switches

- 60mm width
- IP66 metal casing
- Snap action contacts
- Other types available
- approved

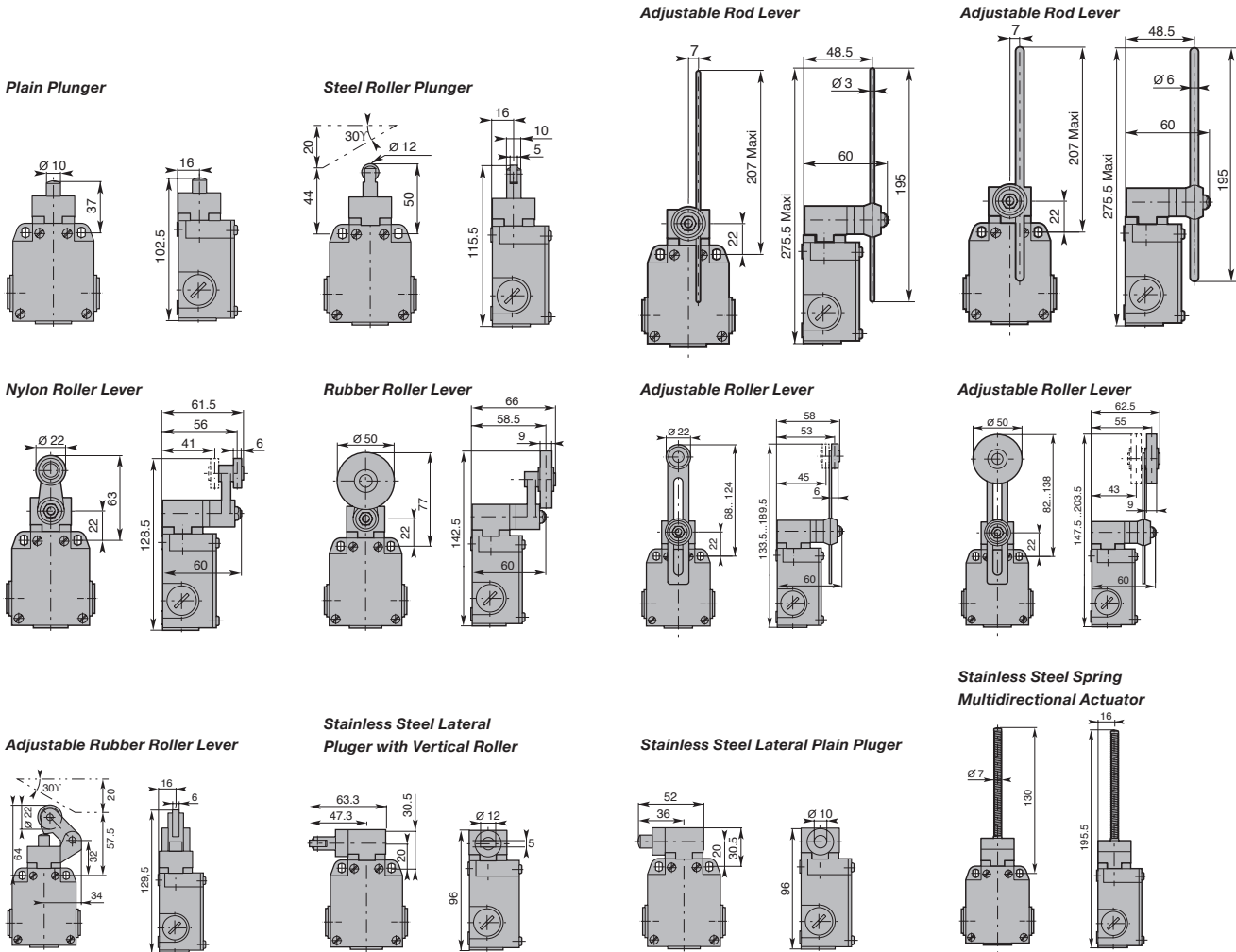
CE 31



SPECIFICATION

Rating	500V
Shock withstand	50g
Impulse withstand voltage	6kV
Working temperature	-25°C to +70°C
Switching frequency	3600 cycles/h
Load factor	0.5
Short circuit protection	10A gG fuse

IP66 METAL CASING	PLUNGER TYPE	MAX ACTUATION SPEED	ACTUATION/ NC OPERATION
CE31.00.AM	Plain Plunger	0.5ms ⁻¹	30N/45N
CE31.00.BM	Steel Roller Plunger	0.5ms ⁻¹	22N/40N
CE31.00.HM	Adjustable Rod Lever	1.5ms ⁻¹	0.15Nm/0.30Nm
CE31.00.GM	Adjustable Rod Lever	1.5ms ⁻¹	0.15Nm/0.30Nm
CE31.00.EM	Nylon Roller Lever	1.5ms ⁻¹	0.15Nm/0.30Nm
CE31.00.EM/50	Rubber Roller Lever	1.5ms ⁻¹	0.15Nm/0.30Nm
CE31.00.FM	Adjustable Roller Lever	1.5ms ⁻¹	0.15Nm/0.30Nm
CE31.00.FM/50	Adjustable Roller Lever	1.5ms ⁻¹	0.15Nm/0.32Nm
CE31.00.KM	Adjustable Rubber Roller Lever	1.5ms ⁻¹	0.12Nm/0.30Nm
CE31.00.LBM/90	Stainless Steel Lateral Plunger with Vertical Roller	1.5ms ⁻¹	30N/50N
CE31.00.LAM	Stainless Steel Lateral Plain Plunger	0.5ms ⁻¹	30N/50N
CE31.00.LM	Stainless Steel Spring Multidirectional Acuator	1.0ms ⁻¹	0.18N/-



PCB
TERMINAL
BLOCKS

INTER-
CONNECTION

FUSES &
FUSE-
HOLDERS

LEDs &
INDICATORS

MINIATURE
SWITCHES

LIMIT &
SAFETY
SWITCHES

CONTROL
PRODUCTS

INTERFACE
MODULES &
SUPPORTS

RELAY
BASES

ENCLOSURES

BATTERIES

TRANS-
FORMERS




+44 (0)1638 716101
info@camdenboss.com
www.camdenboss.com

We operate a constant improvement policy,
our products are subject to change without notice.

CAMDENBOSS
ELECTRONICS & ENCLOSURES

LIMIT & SAFETY SWITCHES

30mm Wide Pre-wired Limit Switches

- 30mm width
- Pre wired
- Metal casing
- IP67
- Snap action contacts
- Other types available
-  us, approved

CE 70

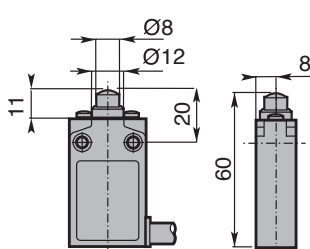


SPECIFICATION

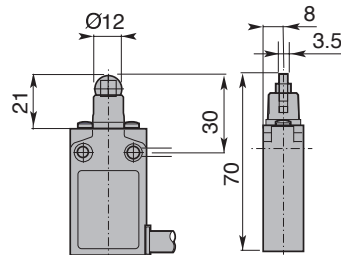
Rating	400V
Cable	PVC 1m 4x0.75mm ²
Impulse withstand voltage	4kV
Working temperature	-25°C to +70°C
Switching frequency	3600 cycles/h
Load factor	0.5
Short circuit protection	6A gG fuse

TYPE NO.	PLUNGER TYPE	MAX ACTUATION SPEED	ACTUATION/NC OPERATION
CE70.00.AM	Plain Plunger	0.5ms ⁻¹	15N/30N
CE70.00.BM	Roller Plunger	0.1ms ⁻¹	10N/30N
CE70.00.EM	Roller Lever	1.5ms ⁻¹	0.08Nm/0.28Nm
CE70.00.FM	Adjustable Nylon Roller Lever	1.5ms ⁻¹	0.08Nm/0.28Nm
CE70.00.GM	Adjustable Rod Lever	1.5ms ⁻¹	0.08Nm/0.28Nm
CE70.00.HM	Adjustable Rod Lever	1.5ms ⁻¹	0.08Nm/0.28Nm

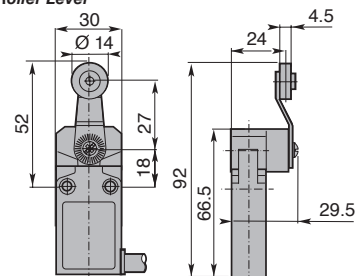
Plain Plunger



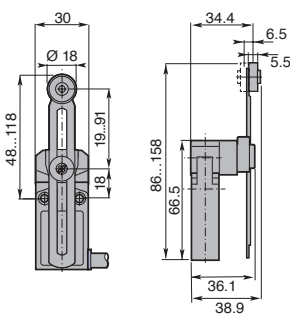
Roller Plunger



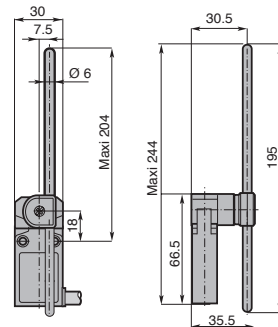
Roller Lever



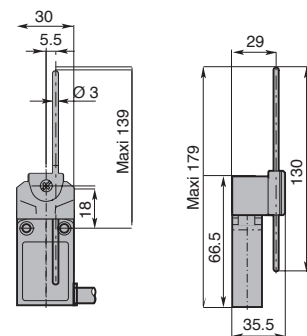
Adjustable Nylon Roller Lever



Adjustable Rod Lever



Adjustable Rod Lever



PCB
TERMINAL
BLOCKS

INTER-
CONNECTION

FUSES &
FUSE-
HOLDERS

LEDs &
INDICATORS

MINIATURE
SWITCHES

LIMIT &
SAFETY
SWITCHES

CONTROL
PRODUCTS

INTERFACE
MODULES &
SUPPORTS

RELAY
BASES


ENCLOSURES

BATTERIES

TRANS-
FORMERS

LIMIT & SAFETY SWITCHES

35mm Wide Pre-wired Limit Switches

- 35mm width
- Pre wired
- Metal casing
- IP67
- Snap action contacts
- Other types available
-  us, approved

CE 60

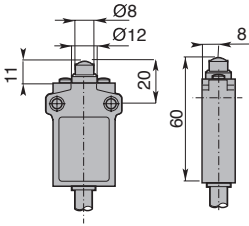


SPECIFICATION

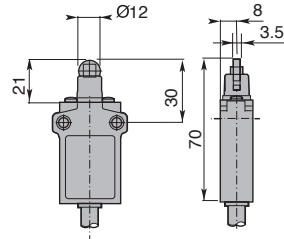
Rating	400V
Cable	PVC 1m 4x0.75mm ²
Impulse withstand voltage	4kV
Working temperature	-25°C to +70°C
Switching frequency	3600 cycles/h
Load factor	0.5
Short circuit protection	6A gG fuse

TYPE NO.	PLUNGER TYPE	MAX ACTUATION SPEED	ACTUATION/NC OPERATION
CE60.00.AM	Plain Plunger	0.5ms ⁻¹	15N/30N
CE60.00.BM	Roller Plunger	0.1ms ⁻¹	10N/30N
CE60.00.EM	Roller Lever	1.5ms ⁻¹	0.08Nm/0.28Nm
CE60.00.FM	Adjustable Nylon Roller Lever	1.5ms ⁻¹	0.08Nm/0.28Nm
CE60.00.GM	Adjustable Rod Lever	1.5ms ⁻¹	0.08Nm/0.28Nm
CE60.00.HM	Adjustable Rod Lever	1.5ms ⁻¹	0.08Nm/0.28Nm

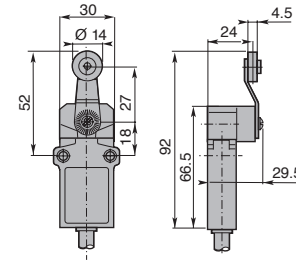
Plain Plunger



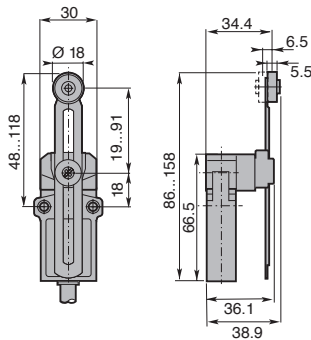
Roller Plunger



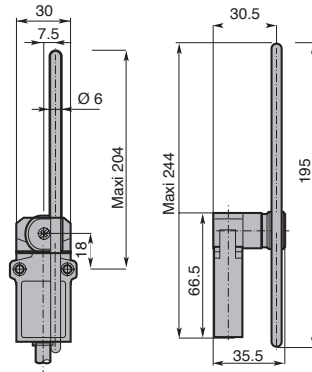
Roller Lever



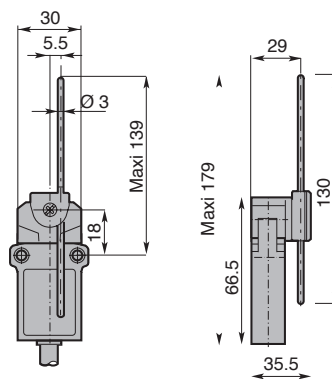
Adjustable Nylon Roller Lever



Adjustable Rod Lever



Adjustable Rod Lever



+44 (0)1638 716101
info@camdenboss.com
www.camdenboss.com

We operate a constant improvement policy,
our products are subject to change without notice.

CAMDENBOSS
ELECTRONICS & ENCLOSURES

LIMIT & SAFETY SWITCHES

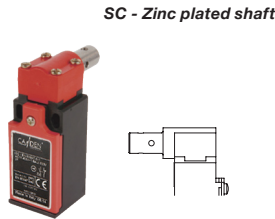
Safety Limit Switches

- Visible operation electromechanical limit safety switch
- High switch current
- Precise operating points
- Snap action, slow action, break and make before break, simultaneous action contact block options
- 1, 2 & 3 cable inlet options

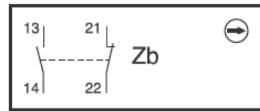
- Polymeric IP65 and metal IP66 casing
- PG13.5 inlet as standard
- M20x1.5 inlet available to order

SPECIFICATION

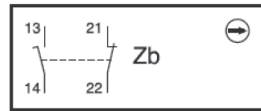
Rating	10A/24VAC, 1A/230VAC-3, 9A/380VAC-1
Insulation voltage	8A/24VDC-2, 0.27A/250VDC
	690V
	CE10-M & CE21-M
Impulse withstand voltage	400V
Operating temperature	6kV
Short circuit protection	-25°C to +70°C
	Fuse 10A type gG



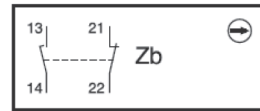
00 Snap action 1NO+1NC



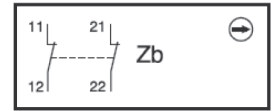
05 Slow action break before make 1NO+1NC



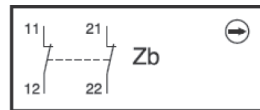
01 Slow action make before break 1NO+1NC



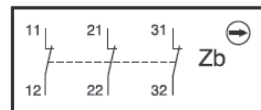
02 Simultaneous slow action 2NC



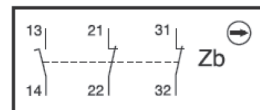
03 Snap action 2NC



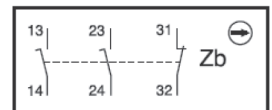
09 Simultaneous slow action 3NC



08 Slow action break before make 1NO+2NC



06 Slow action break before make 2NO+1NC



30mm Polymeric Casing 1 Cable Inlet IP65

S5

TYPE NO.	CONTACT HEIGHT
CE10.00.S5P	00
CE10.05.S5P	05
CE10.01.S5P	01
CE10.02.S5P	02
CE10.03.S5P	03

SC

TYPE NO.	CONTACT HEIGHT
CE10.00.SCP	00
CE10.05.SCP	05
CE10.01.SCP	01
CE10.02.SCP	02
SC10.03.SCP	03

T

TYPE NO.	CONTACT HEIGHT
CE10.00.TB	00
CE10.05.TB	05
CE10.01.TB	01
CE10.02.TB	02
CE10.03.TB	03



30mm Metal Casing 1 Cable Inlet IP66

S5

TYPE NO.	CONTACT HEIGHT
CE10.00.S5M	00
CE10.05.S5M	05
CE10.01.S5M	01
CE10.02.S5M	02
CE10.03.S5M	03

SC

TYPE NO.	CONTACT HEIGHT
CE10.00.SCM	00
CE10.05.SCM	05
CE10.01.SCM	01
CE10.02.SCM	02
CE10.03.SCM	03

T

TYPE NO.	CONTACT HEIGHT
CE10.00.TM	00
CE10.05.TM	05
CE10.01.TM	01
CE10.02.TM	02
CE10.03.TM	03



LIMIT & SAFETY SWITCHES

40mm Polymeric Casing 1 Cable Inlet IP65 S5

TYPE NO.	CONTACT HEIGHT
CE41.00.S5P	00
CE41.05.S5P	05
CE41.01.S5P	01
CE41.02.S5P	02
CE41.03.S5P	03
CE41.09.S5P	09
CE41.08.S5P	08
CE41.06.S5P	06



40mm Metal Casing 1 Cable Inlet IP66 S5

TYPE NO.	CONTACT HEIGHT
CE41.00.S5M	00
CE41.05.S5M	05
CE41.01.S5M	01
CE41.02.S5M	02
CE41.03.S5M	03
CE41.09.S5M	09
CE41.08.S5M	08
CE41.06.S5M	06

T

TYPE NO.	CONTACT HEIGHT
CE41.00.TM	00
CE41.05.TM	05
CE41.01.TM	01
CE41.02.TM	02
CE41.03.TM	03
CE41.09.TM	09
CE41.08.TM	08
CE41.06.TM	06



50mm Polymeric Casing 3 Cable Inlet IP65 S5

TYPE NO.	CONTACT HEIGHT
CE20.00.S5P	00
CE20.05.S5P	05
CE20.01.S5P	01
CE20.02.S5P	02
CE20.03.S5P	03

SC

TYPE NO.	CONTACT HEIGHT
CE20.00.SCP	00
CE20.05.SCP	05
CE20.01.SCP	01
CE20.02.SCP	02
CE20.03.SCP	03

T

TYPE NO.	CONTACT HEIGHT
CE20.00.TB	00
CE20.05.TB	05
CE20.01.TB	01
CE20.02.TB	02
CE20.03.TB	03



50mm Metal Casing 3 Cable Inlet IP66 S5

TYPE NO.	CONTACT HEIGHT
CE21.00.S5M	00
CE21.05.S5M	05
CE21.01.S5M	01
CE21.02.S5M	02
CE21.03.S5M	03

SC

TYPE NO.	CONTACT HEIGHT
CE21.00.SCM	00
CE21.05.SCM	05
CE21.01.SCM	01
CE21.02.SCM	02
CE21.03.SCM	03

T

TYPE NO.	CONTACT HEIGHT
CE21.00.TM	00
CE21.05.TM	05
CE21.01.TM	01
CE21.02.TM	02
CE21.03.TM	03



60mm Metal Casing 1 Cable Inlet IP66 S5

TYPE NO.	CONTACT HEIGHT
CE31.00.S5M	00
CE31.05.S5M	05
CE31.01.S5M	01
CE31.02.S5M	02
CE31.03.S5M	03
CE31.09.S5M	09
CE31.08.S5M	08
CE31.06.S5M	06

T

TYPE NO.	CONTACT HEIGHT
CE31.00.TM	00
CE31.05.TM	05
CE31.01.TM	01
CE31.02.TM	02
CE31.03.TM	03
CE31.09.TM	09
CE31.08.TM	08
CE31.06.TM	06



PCB
TERMINAL
BLOCKS

INTER-
CONNECTION

FUSES &
FUSE-
HOLDERS

LEDs &
INDICATORS

MINIATURE
SWITCHES

LIMIT &
SAFETY
SWITCHES

CONTROL
PRODUCTS

INTERFACE
MODULES &
SUPPORTS

RELAY
BASES

ENCLOSURES

BATTERIES

TRANS-
FORMERS



+44 (0)1638 716101
info@camdenboss.com
www.camdenboss.com

We operate a constant improvement policy,
our products are subject to change without notice.