

IEC Appliance Inlet C8, Screw-on Mounting, Front Side, Solder or Quick-connect Terminal



C8

 70 °C

**Description**

- Panel Mount:
Screw-on mounting, from front side
- Appliance Inlet, Pin temperature 70 °C, Protection class II
- Solder, Quick Connect or PCB Terminal

Approvals

- VDE Certificate Number: 40002274
- UL File Number: E96454
- CSA File Number: 27324

References

We recommend for new applications the type [0720-FS](#)

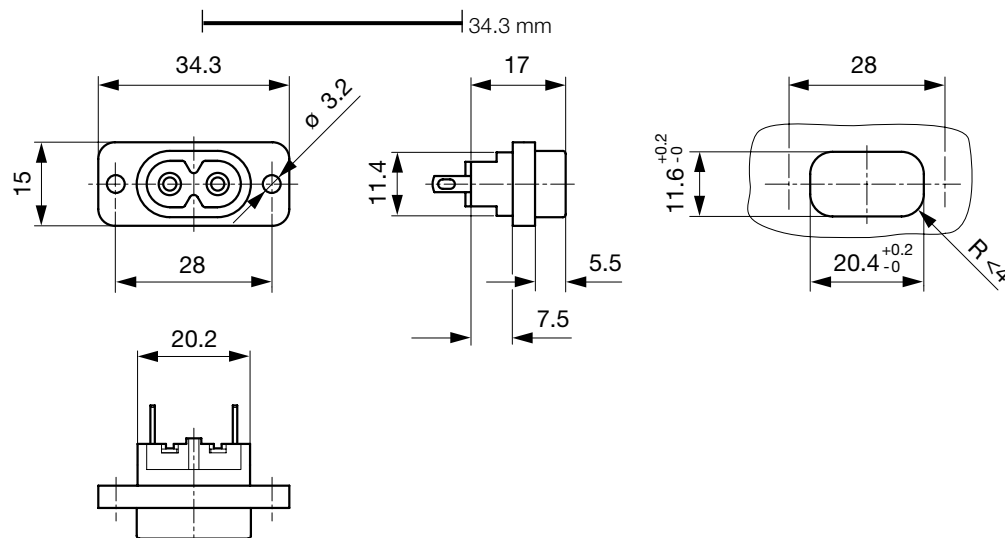
Weblinks

[pdf](#), [html](#), [General Product Information](#), [Approvals](#), [RoHS](#), [CHINA-RoHS](#), [Mating Connectors](#), [e-Store](#), [SCHURTER-Stock-Check](#), [Distributor-Stock-Check](#), [Accessories](#)

Technical Data

| | |
|---------------------------|--|
| Ratings IEC | 2.5 A / 250 VAC; 50 Hz |
| Ratings UL/CSA | 2.5 A / 250 VAC; 60 Hz |
| Dielectric Strength | > 3 kVAC between L-N > 1.5 kVAC between L/N-PE (1 min/50 Hz) |
| Allowable Operation Temp. | -25 °C to 70 °C |
| Degree of Protection | from front side IP 20 acc. to IEC 60529 |
| Protection Class | Suitable for appliances with protection class 2 acc. to IEC 61140 |
| Terminal | Solder, Quick Connect or PCB Terminal |
| Material: Housing | PA6, black / grey / white, UL 94V-0 |

| | |
|-----------------|--|
| Appliance Inlet | C8 acc. to IEC/EN 60320-1, UL 498, CSA C22.2 no. 42 (for cold conditions) pin-temperature 70 °C, 2.5 A, Protection Class 2 |
|-----------------|--|

Dimensions

Length of the terminal please find at the order code configuration table

Config. Code

2573 - H - A B C 0- D - E G F

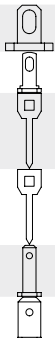
The characters are placeholders for the correspondingly keys of selections from the key tables.

2573 - H - A B C 0- D - E G F = Type

| Type | Configuration key |
|--------------------|-------------------|
| protection class 2 | B |

2573 - H - A B C 0- D - E G F = Terminals

| Terminal L | Configuration key |
|------------------------------------|-------------------|
| short solder terminal (L = 4.8 mm) | 2 |
| long solder terminal (L = 8.5 mm) | 3 |
| PCB-terminal (short) | 5 |
| PCB-terminal (long) | 6 |
| Blade terminal (2.8 x 0.8 mm) | 7 |
| Blade terminal (4.8 x 0.8 mm) | 8 |



2573 - H - A B C 0- D - E G F = Terminals

| Terminal N | Configuration key |
|------------------------------------|-------------------|
| short solder terminal (L = 4.8 mm) | 2 |
| long solder terminal (L = 8.5 mm) | 3 |
| PCB-terminal (short) | 5 |
| PCB-terminal (long) | 6 |
| Blade terminal (2.8 x 0.8 mm) | 7 |
| Blade terminal (4.8 x 0.8 mm) | 8 |

Symbols similar as in table A

2573 - H - A B C 0- D - E G F = Terminals

| Terminal Ground | Configuration key |
|------------------|-------------------|
| without terminal | 0 |

Symbols similar as in table A

2573 - H - A B C 0- D - E G F = Color

| Color | Configuration key |
|----------------------|-------------------|
| jet black; RAL9005 | A |
| silver grey; RAL7001 | B |
| pure white; RAL9010 | D |

2573 - H - A B C 0- D - E G F = Style

| Style | Configuration key |
|--|-------------------|
| flange with through holes | 2 |
| flange with through holes (special type) | 7 |

2573 - H - A B C 0- D - E G F = Dimension X

| Dimension "X" | Configuration key |
|---------------|-------------------|
| 00 | |

The dimension "X" is displayed in ($\frac{1}{10}$ mm). This information is also valid for the order code

2573 - H - A B C 0- D - E G F = Orientation of Terminals

| Orientation of Terminals | Configuration key |
|--------------------------|-------------------|
| horizontal | A |
| vertical | B |

Packaging unit 100 Pcs

Accessories

Description

