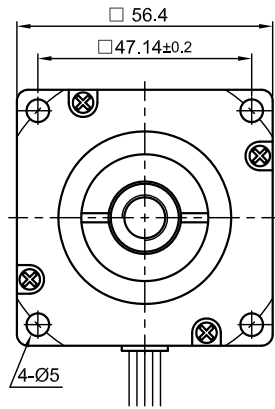
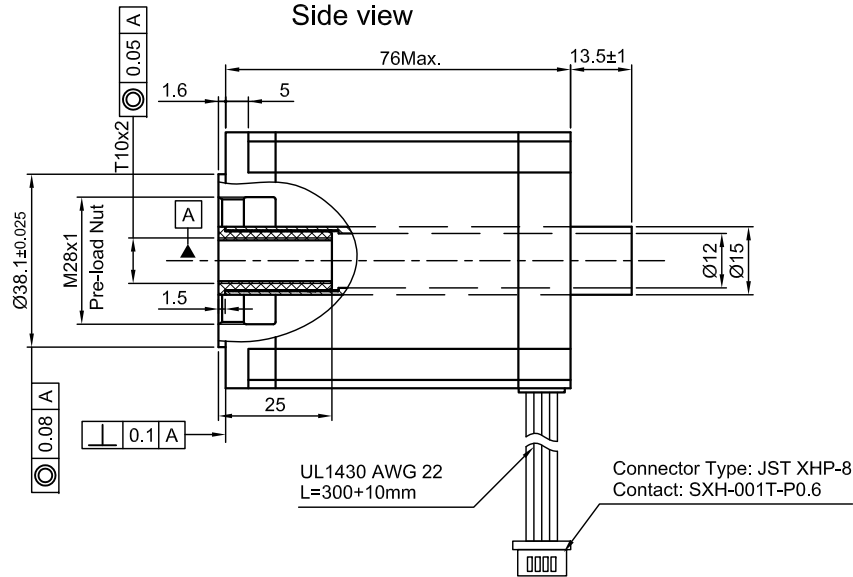


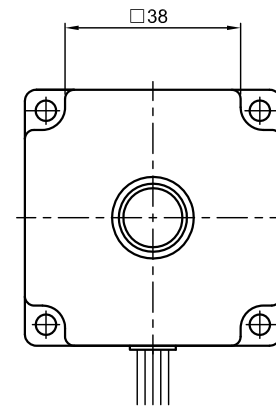
Front view and mounting



Side view



Rear view



SPECIFICATION	UNIPOLAR OR	BIPOLAR	
	BIPOLAR-1 WINDING	SERIAL	PARALLEL
AMPS/PHASE	3.0	2.1	4.2
RESISTANCE/PHASE (Ohms)@25°C	1.0±10%	2.0±10%	0.5±10%
INDUCTANCE/PHASE (mH) @1KHz	2.2±20%	8.8±20%	2.2±20%
SPINDLE PITCH (mm) [in]	2 [0.078]		
THRUST (N) [lb]	1000 [2248]		
RESOLUTION (mm/STEP)	0.01		
STATIC THRUST (N) (NO CURRENT)	500		
MAX. SPEED (mm/sec.) at 48V	80		
MAX. SPEED WITH MAX. THRUST (mm/sec.)	25		
WEIGHT (Kg) [lb]	1.0 [1.43]		
TEMPERATURE RISE: MAX.80°C (MOTOR STANDSTILL; FOR 2 PHASE ENERGIZED)			
AMBIENT TEMPERATURE -10°~ 50°C [14°F ~ 122°F]			
INSULATION RESISTANCE 100 MOhm (UNDER NORMAL TEMPERATURE AND HUMIDITY)			
INSULATION CLASS B 130° [266°F]			
DIELECTRIC STRENGTH 500VAC FOR 1 MIN. (BETWEEN THE MOTOR COILS AND THE MOTOR CASE)			
AMBIENT HUMIDITY MAX. 85% (NO CONDENSATION)			

Please regard the application note at www.nanotec.com for further informations.

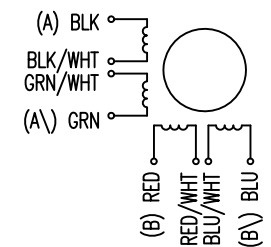
Shaft play is adjustable at the motor.

UNIPOLAR	TYPE OF CONNECTION (EXTERN)			MOTOR		
	1WINDING	BIPOLAR SERIAL	BIPOLAR PARALLEL	CONNECTOR PIN NO.	LEADS	WINDING
A	A	A	A	1	BLK	A
COM	A			3	BLK/WHT	
A\		A\	A\	2	GRN/WHT	A\
B	B	B	B	4	GRN	B
COM	B			5	RED	
B\		B\	B\	7	RED/WHT	B\
				6	BLU/WHT	
				8	BLU	

FULL STEP 2 PHASE-Ex., WHEN FACING MOUNTING END (X)

STEP	A	B	A\	B\	CCW	CW
1	+	+	-	-	↓	↑
2	-	+	+	-	↑	↓
3	-	-	+	+	↓	↑
4	+	-	-	+	↑	↓

WIRING DIAGRAM



				SCALE FREE	APVD	LINEAR AKTUATOR	
				X ±0.5	CHKD ZYL 03.09.10		
REV	DESCRIPTION	DATE	APVD	1PL ±0.2	DRN GYQ 03.09.10	DWG.NO	
				2PL ±0.1	SIGNATURE	DATE	L5918L3008-T10x2
				ANGLE ±30'			