

10-639772-001

SHEET 1 OF 2

REV.

C

B

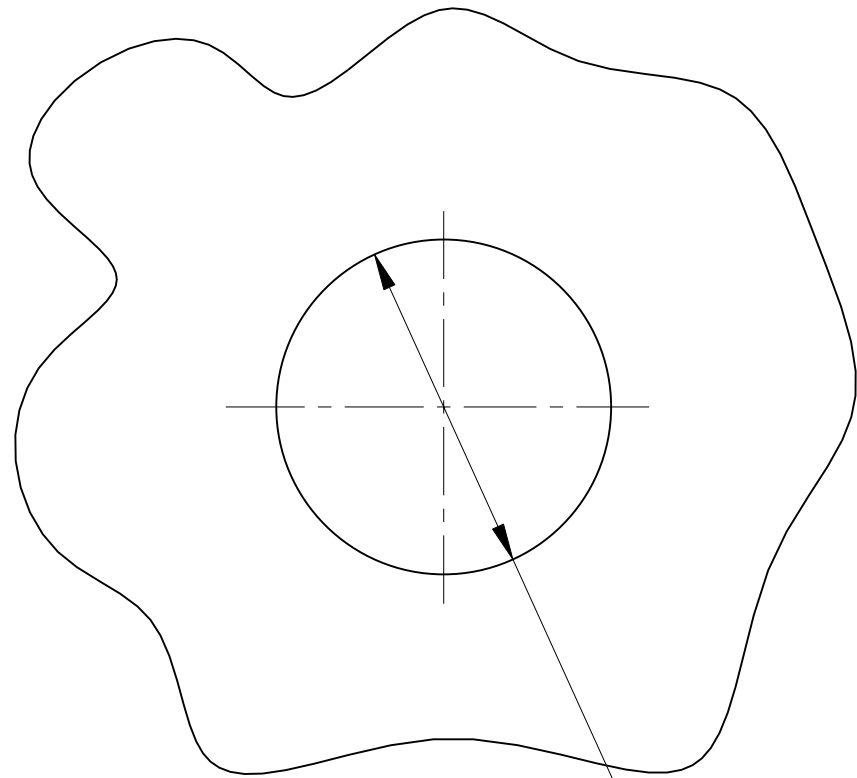
A

4

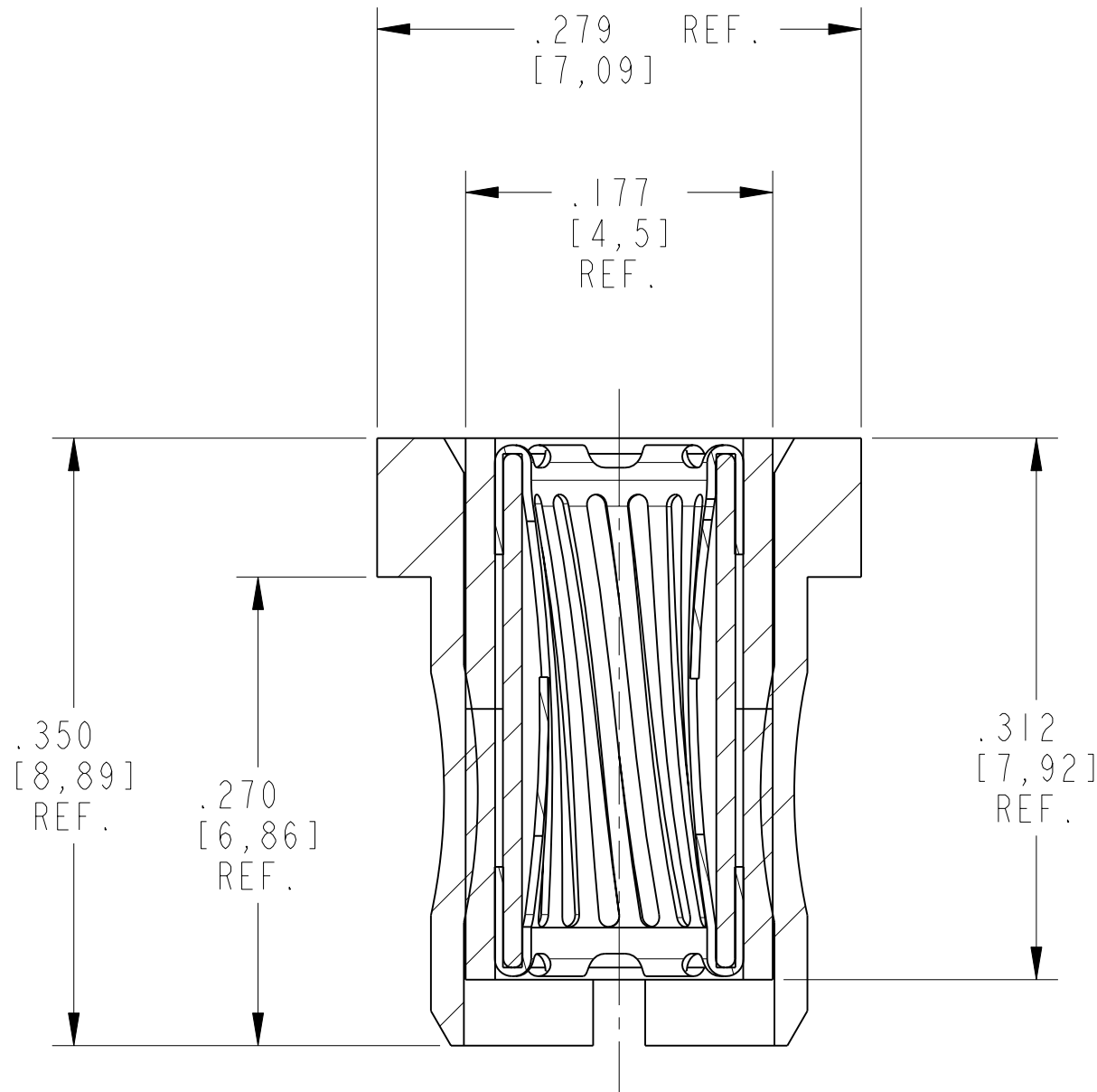
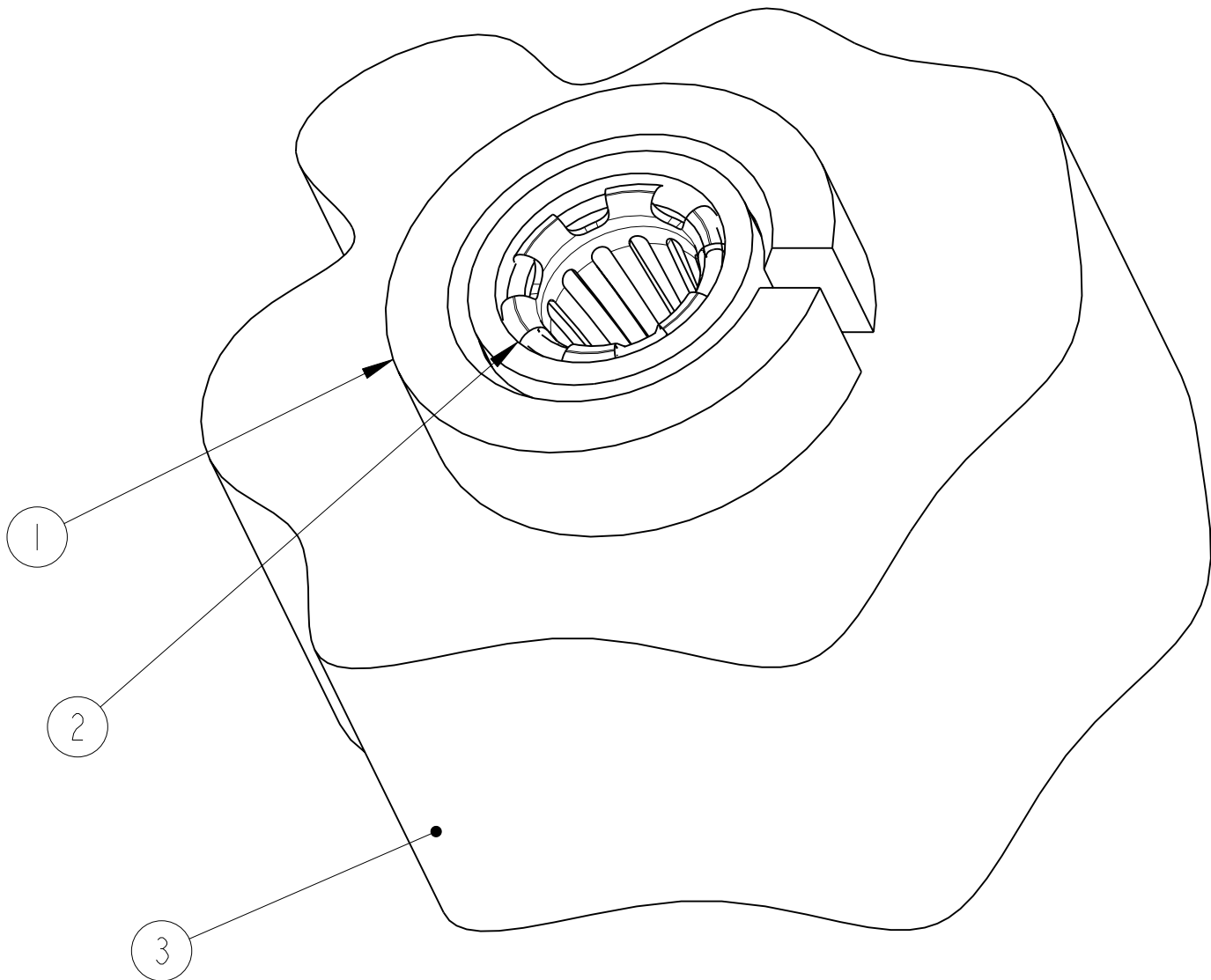
3

2

-		SHEET 1 OF 2		10-639772-001	
REV.				DOCUMENT NO.	
REVISIONS					
LTR		DESCRIPTION			DATE
PA2		PRELIMINARY DRAWING			



PRE-RELEASE DRAWING  
FOR PROTOTYPE BUILD



SECTION A-A

3. RADSOK SHOWN MATES WITH AS SIZE 12 PIN.  
RECOMMENDED PIN CONFIGURATION:  $\varnothing.094 \pm .001$  WITH A SPHERICAL RADIUS.
2. RADSOK CARTRIDGE, ITEM 2, IS PRESSED TO FINAL POSITION IN BUSHING, ITEM 1, TO DIMENSION SHOWN. CARE IS TO BE TAKEN TO ENSURE CARTRIDGE IS PRESSED PERPENDICULAR TO BOARD.
1. RADSOK BUSHING, ITEM 1, IS INSTALLED INTO PCB, ITEM 3 AS SHOWN. ITEMS 1 AND 2 ARE SUPPLIED PRE-INSTALLED BUT THE RADSOK MUST BE PRESSED TO FINAL POSITION (SEE NOTE 2).

NOTES:

THE USE OF THIS DOCUMENT IS UNLIMITED.  
HOWEVER, DOCUMENTS REFERENCED HEREON  
MAY CONTAIN LIMITED RIGHTS DATA.

N/A

NEXT ASSEMBLY

PRO/ENGINEER INFORMATION	
Pro/e Model Used:	10-639772.ASSEM
Drawing Name:	10-639772

UNLESS OTHERWISE SPECIFIED

SPECIFICATIONS

LINEAR DIMENSIONS ARE IN INCHES  
TOLERANCES:

.XXXX =  $\pm .0005$  ANGLES =  $\pm 2^\circ$   
.XXX =  $\pm .010$   
.XX =  $\pm .03$   
.X =  $\pm .1$

DIM.& TOL. PER ASME Y14.5M;

DRM PER MIL-DTL-31000;

OTHER Amphenol Stds. PER 9-3800

LEGENDS:

=FLAG NOTE CALL OUT  
REFERENCE ONLY



MATERIAL SPEC.

N/A

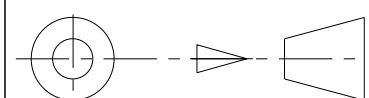
PROCESS SPEC.

N/A

3	--	N/A	PRINTED CIRCUIT BOARD	
2	I	10-639678-001	RADSOK CARTRIDGE (HO)	
1	I	10-639726-001	2.4MM RADSERT BUSHING	
POS	QTY	PART NUMBER	DESCRIPTION	NOTE

APPROVALS		DATE
PREPARED BY	M.UPPLEGER	06-01-06
ENGINEER IN CHARGE	J.SANDBURG	
DESIGN MANAGER	J.SANDBURG	
DESIGN ACTIVITY GROUP	C&I	

THIRD ANGLE PROJECTION



PARTS LIST

AMPHENOL CORPORATION  
40-60 DELAWARE AVENUE  
SIDNEY, N.Y. 13838

2.4MM RADSOK/RADSERT KIT  
PCB MOUNTED PRESS-FIT, SILVER  
MATES WITH SIZE 12 PIN

SIZE C	CAGE CODE 77820	DOCUMENT NO. 10-639772-001	REV. PA2
SCALE: 10:0		REF.	SHEET 1 OF 2

DOCUMENT NO.  
10-639772-001

SHEET 1 OF 2

REV.

-

3

2

1

REV.

-

SHEET 1 OF 2

DOCUMENT NO.

10-639772-001

VERSION

3

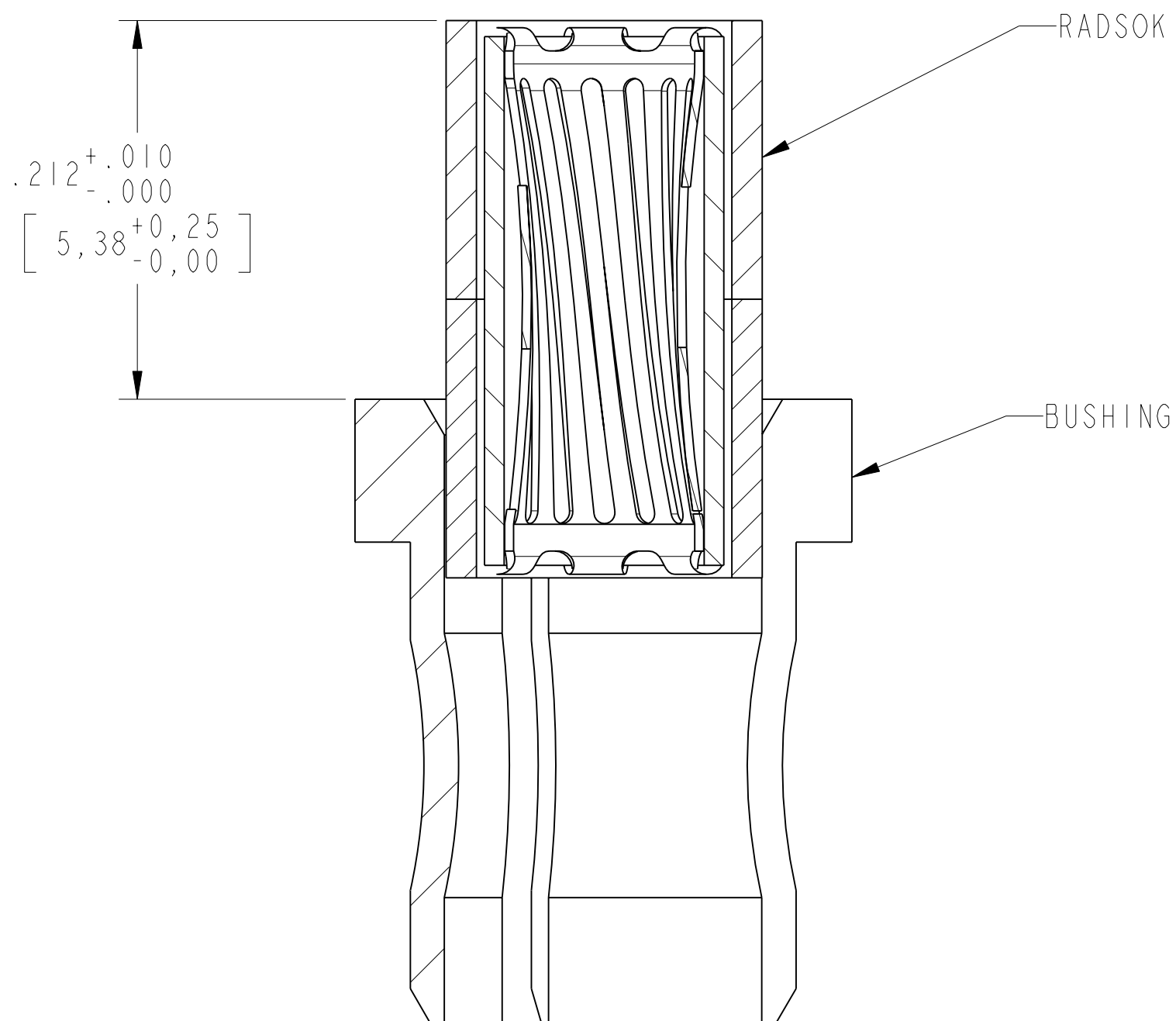
REVISION

-

RELEASE STATE

WIP

PRE-RELEASE DRAWING  
FOR PROTOTYPE BUILD



PRE-INSTALL POSITION OF RADSOK

I. RADSOK CARTRIDGE IS PRESSED INTO BUSHING TO DIMENSION SHOWN. CARE TO BE TAKEN TO ENSURE CARTRIDGE IS INSTALLED PARALLEL TO BORE IN BUSHING.

**NOTES:**

THE USE OF THIS DOCUMENT IS UNLIMITED.  
HOWEVER, DOCUMENTS REFERENCED HEREON  
MAY CONTAIN LIMITED RIGHTS DATA.