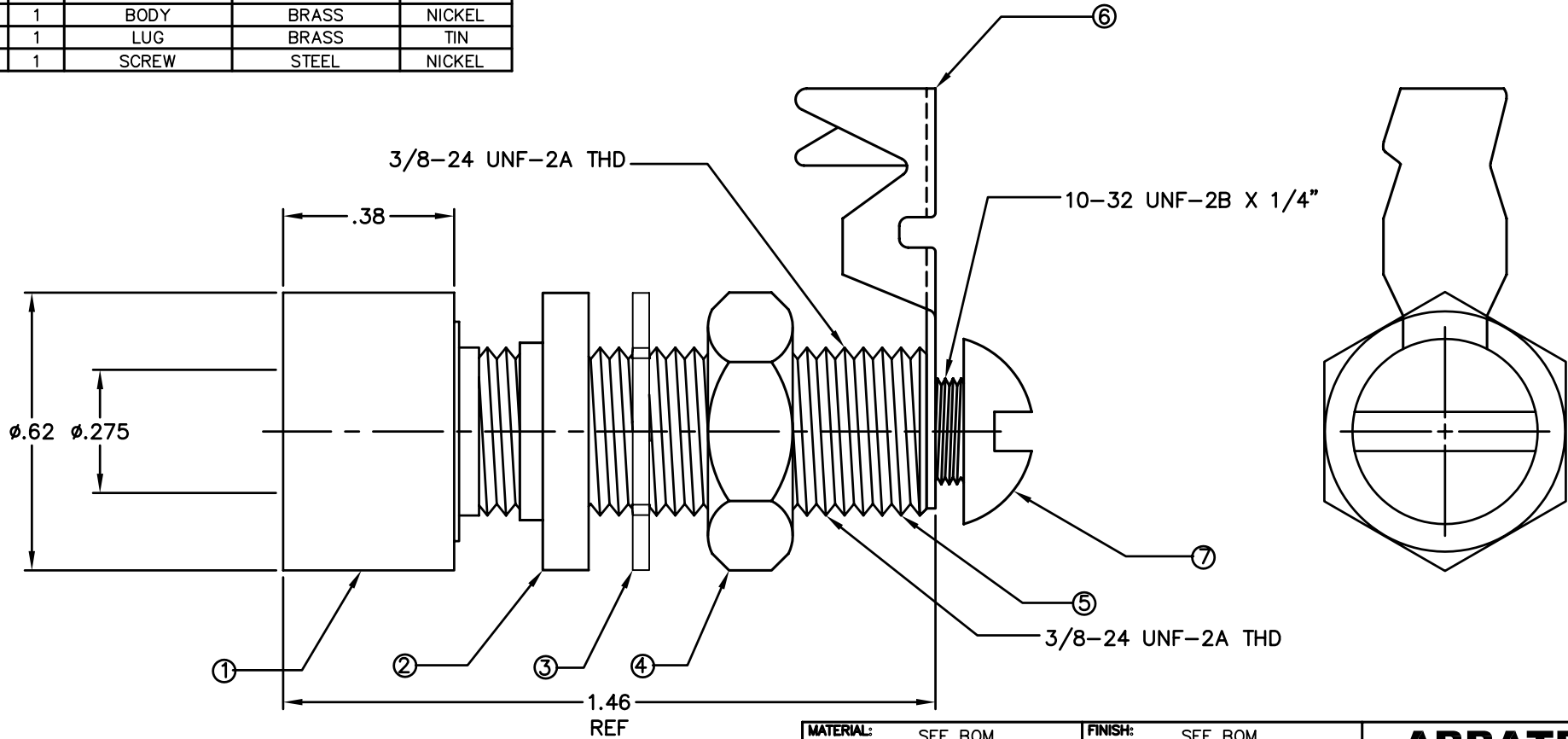


BILL OF MATERIALS

| DET. | QTY. | DESCRIPTION | MATERIAL | PLATING |
|------|------|-------------|----------|---------|
| 1 | 1 | CAP | NYLON | ---- |
| 2 | 1 | WASHER | FIBER | ---- |
| 3 | 1 | LOCK WASHER | STEEL | ZINC |
| 4 | 1 | HEX NUT | BRASS | NICKEL |
| 5 | 1 | BODY | BRASS | NICKEL |
| 6 | 1 | LUG | BRASS | TIN |
| 6 | 1 | SCREW | STEEL | NICKEL |

REVISIONS

| SYM | DESCRIPTION | REVISED BY | DATE | APPR |
|-----|---------------------------|------------|--------|------|
| B | REDRAWN IN CAD FROM REV A | TPL | 8/6/04 | TPL |



| PART# | COLOR |
|---------|-------|
| 286-102 | RED |
| 286-103 | BLACK |

| | | | | | | | |
|---|------|-----------------|--------------------------------|---|----------|--|--|
| MATERIAL: SEE BOM | | FINISH: SEE BOM | | <h1>ABBATRON</h1> <p>Electronic Connectors and Hardware 632 Arch Street, Meadville, Pa. 16335</p> | | | |
| DIMENSIONAL TOLERANCES UNLESS OTHERWISE SPECIFIED | | | TITLE: 286 | | | | |
| .XX | .XXX | .XXX | GIANT BANANA JACK | | | | |
| ---- | ---- | ---- | | | | | |
| FRACTIONS ANGLES SCALE | | | DRAWN: T. LORD DATE: 8/6/04 | | | | |
| ---- | ---- | 4:1 | CHECKED: T. LORD DATE: 8/6/04 | | | | |
| HEAT TREAT: ---- | | | APPROVED: T. LORD DATE: 8/6/04 | | | | |
| PLOT SCALE: 1=1 | | | SIZE: B | DRAWING NUMBER: SD-286 | ISSUE: B | | |