

1

2

3

4

5

## CHARACTERISTICS:

## MATERIAL:

COLOR: BLACK

OPERATING TEMPERATURE: -20°C UP TO 80°C

COMPLIANCE: LEAD FREE AND ROHS

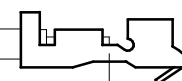
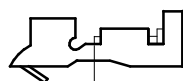
## PACKAGING:

10PCS/BAG

## WIRE DIMENSION:

AWG: 28

Terminal A



Terminal B

Wire Length 300mm\*

Terminal A	648 001 137 22
Terminal B	648 001 137 22

\* Note: Wire UL 1007

RoHS Compliant				PROJECTION:	GENERAL TOLERANCE		DESCRIPTION: WR-WTB 1.50 MM PRE-CRIMPED CONTACT WERI PART NO: 648 148 128 030	SIZE <b>A4</b>
G					.X = +/- 0.2 .XX = +/- 0.15			
F				APPROVAL: RJ	UNIT: MM	DESCRIPTION: WR-WTB 1.50 MM PRE-CRIMPED CONTACT WERI PART NO: 648 148 128 030	SIZE <b>A4</b>	
E					SCALE:			
D				APPROVAL: RJ	SHEET: 1/2	DESCRIPTION: WR-WTB 1.50 MM PRE-CRIMPED CONTACT WERI PART NO: 648 148 128 030	SIZE <b>A4</b>	
C					DRAW: QL			
B								
A	18-OCT-11	PDF	GG					
REV	DATE	FILE	BY					

1

2

3

4

5

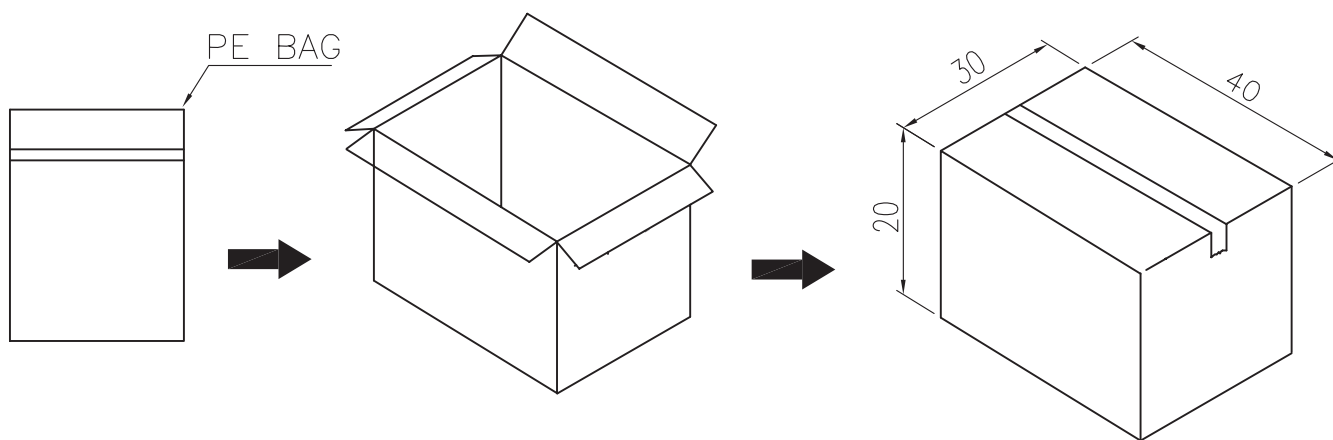
A

B

C

D

Note:  
 1.Dimension  
 Carton Size:40\*30\*20(CM)  
 2.Quantity: 5000 Pcs/Carton



RoHS Compliant

G			
F			
E			
D			
C			
B			
A			
REV	DATE	FILE	BY

PROJECTION:

GENERAL TOLERANCE  
 .X = +/- 0.2  
 .XX = +/- 0.15



APPROVAL: RJ

UNIT: MM  
 SCALE:  
 SHEET: 2/2  
 DRAW: QL

DESCRIPTION: WR-WTB 1.50MM PRE-CRIMPED CONTACT  
 WERI PART NO: 648 148 128 030

SIZE  
**A4**