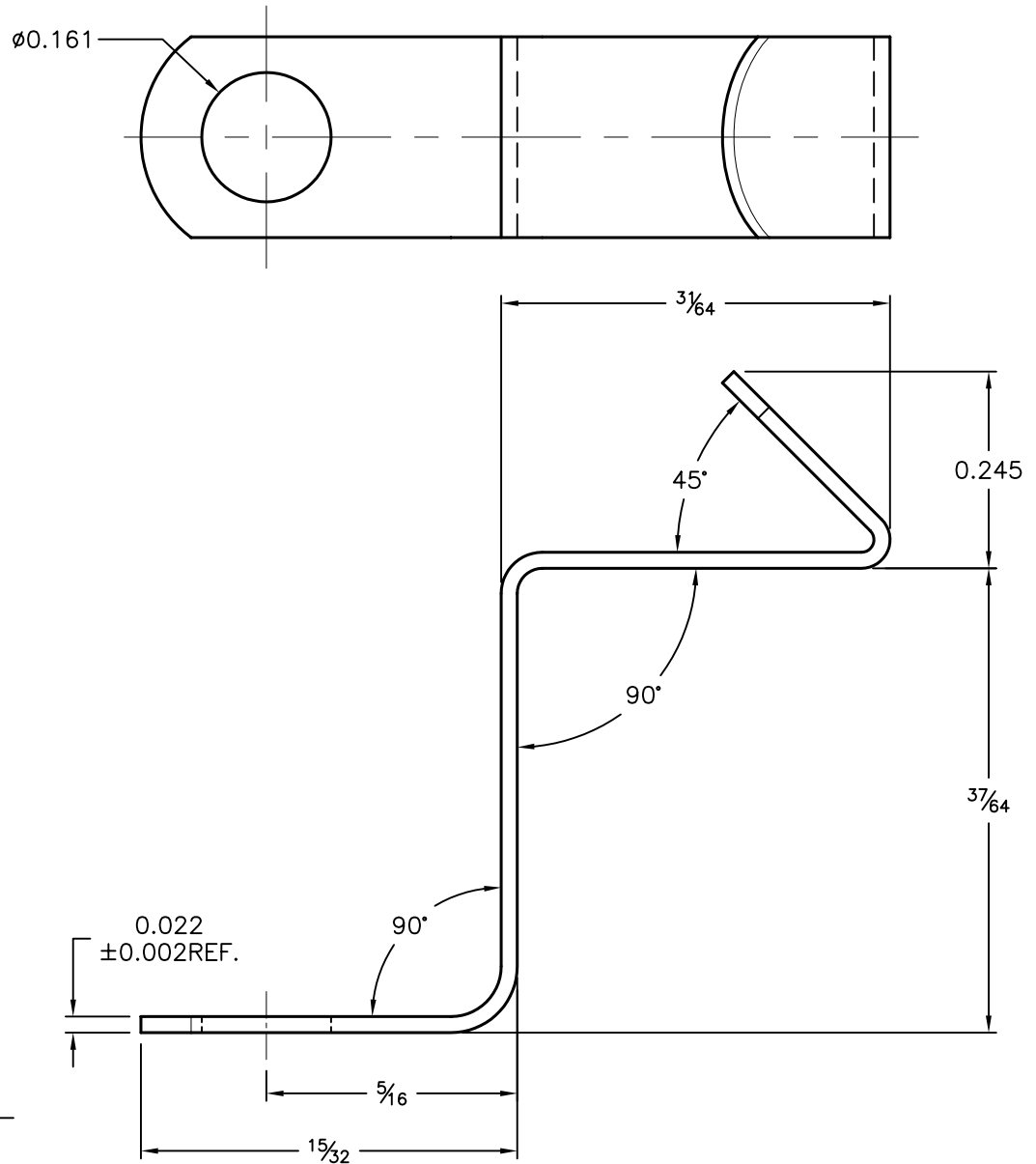


DCP #	REV	DESCRIPTION	DRAWN	DATE	CHECKD	DATE	APPRVD	DATE
1868	A	RELEASED	BYF	11/13/05	HO	11/17/05	JWM	11/17/05



Specifications:

- Material: Made from D77160E (M009504-6) Cold-Rolled, Round edge flat wire, half hard Steel. or Cold-Rolled, half hard, slit edge strip steel.
- Plating: Zinc plated, 0.0002 ~ 0.0003" Thick with Blue Chromate
- Bracket fits inside cores of 25W or 50W Wirewound type resistors and remain in place by spring tension.
- Mounting Screw size (Max.) #6 Screw

SPC-F004.DWG

TOLERANCES: UNLESS OTHERWISE SPECIFIED, Angles $\pm 0.5^\circ$.XX ± 0.010 .XXX ± 0.005 Fractions $\pm \frac{1}{64}$	DRAWN BY:		DATE:		DRAWING TITLE:			
	BASAM YOUSIF		11/13/05		RoHS Compliant Mounting Bracket for Wirewound Resistor			
	CHECKED BY:		DATE:		SIZE	DWG. NO.	ELECTRONIC FILE	REV
	HISHAM ODISH		11/17/05		A	MC14689	28K6303.DWG	A
	APPROVED BY:		DATE:		SCALE: NTS		SHEET: 1 OF 1	
	JEFF MCVICKER		11/17/05		U.O.M.: INCHES			

ALL RIGHTS RESERVED. NO PORTION OF THIS PUBLICATION, WHETHER IN WHOLE OR IN PART CAN BE REPRODUCED WITHOUT THE EXPRESS WRITTEN CONSENT OF SPC TECHNOLOGY. DISCLAIMER: ALL STATEMENTS AND TECHNICAL INFORMATION CONTAINED HEREIN ARE BASED UPON INFORMATION AND/OR TESTS WE BELIEVE TO BE ACCURATE AND RELIABLE. SINCE CONDITIONS OF USE ARE BEYOND OUR CONTROL, THE USER SHALL DETERMINE THE SUITABILITY OF THE PRODUCT FOR THE INTENDED USE AND ASSUME ALL RISK AND LIABILITY WHATSOEVER IN CONNECTION THEREWITH.