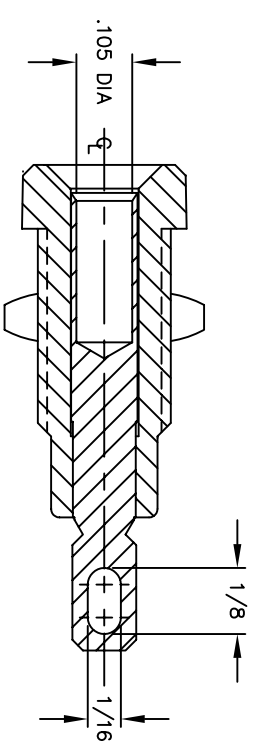
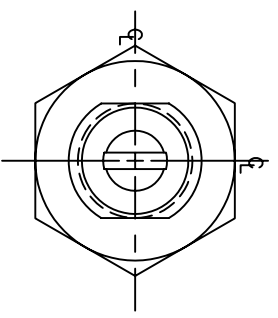
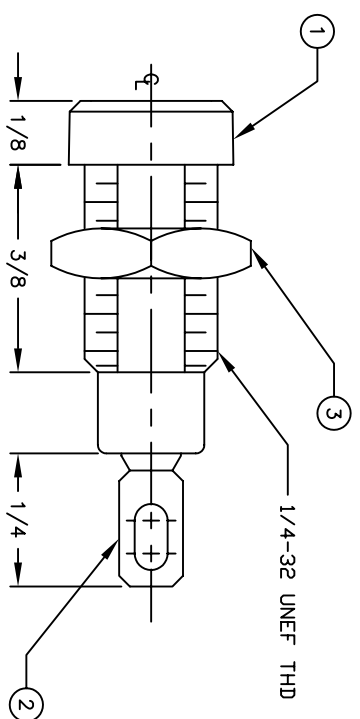
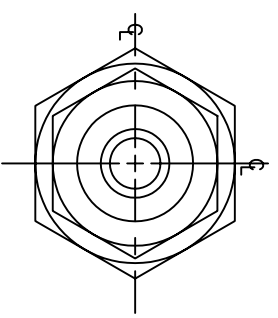
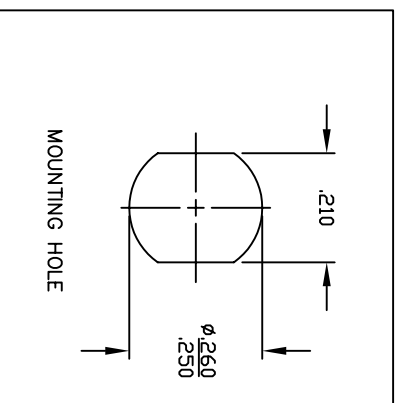


BILL OF MATERIALS				
DET.	QTY.	DESCRIPTION	MATERIAL	PLATING
1	1	BAN. JACK BODY	LEXAN 940	---
2	1	CONTACT	BRASS	TIN
3	1	HEX NUT	BRASS	NICKEL

REVISIONS				
SYM	DESCRIPTION	REVISED BY	DATE	APPR



PART NO.	COLOR
1458-101	WHITE
1458-102	RED
1458-103	BLACK
1458-104	GREEN
1458-105	BLUE
1458-106	ORANGE
1458-107	YELLOW
1458-108	BROWN
1458-112	VIOLET



MATERIAL: SEE B.O.M.		FINISH: SEE B.O.M.	
DIMENSIONAL TOLERANCES UNLESS OTHERWISE SPECIFIED		TITLE: 1458-10X	
XX	.XXX	INSUL. BANANA JACK ASSY.	
---	----	PIERCED CONTACT	
FRACTIONS	ANGLES	SCALE	
----	±1°	4:1	
HEAT TREAT: ---		DRAWN: T. LORD	DATE: 4/7/04
PLOT SCALE: 1=1		CHECKED: T. LORD	DATE: 4/7/04
		APPROVED: T. LORD	DATE: 4/7/04
Electronic Connectors and Hardware		SIZE	DRAWING NUMBER
632 Arch Street, Meadville, Pa. 16335		B	1458
		ISSUE	B

ABBATRON

1D:\ASSY\BANANJK\HHS\1458