



SPC  
TECHNOLOGY

ALL RIGHTS RESERVED. NO PORTION OF THIS PUBLICATION, WHETHER IN WHOLE OR IN PART CAN BE REPRODUCED WITHOUT THE EXPRESS WRITTEN CONSENT OF SPC TECHNOLOGY.

SPC-F005.DWG

REVISIONS

DCP #	REV	DESCRIPTION	DRAWN	DATE	CHECKD	DATE	APPRVD	DATE
			VEE	02-08-10	JAG	03-08-10	XXX	16-08-10

DOC. NO. SPC-F005 \* Effective: 7/8/02 \* DCP No: 1398

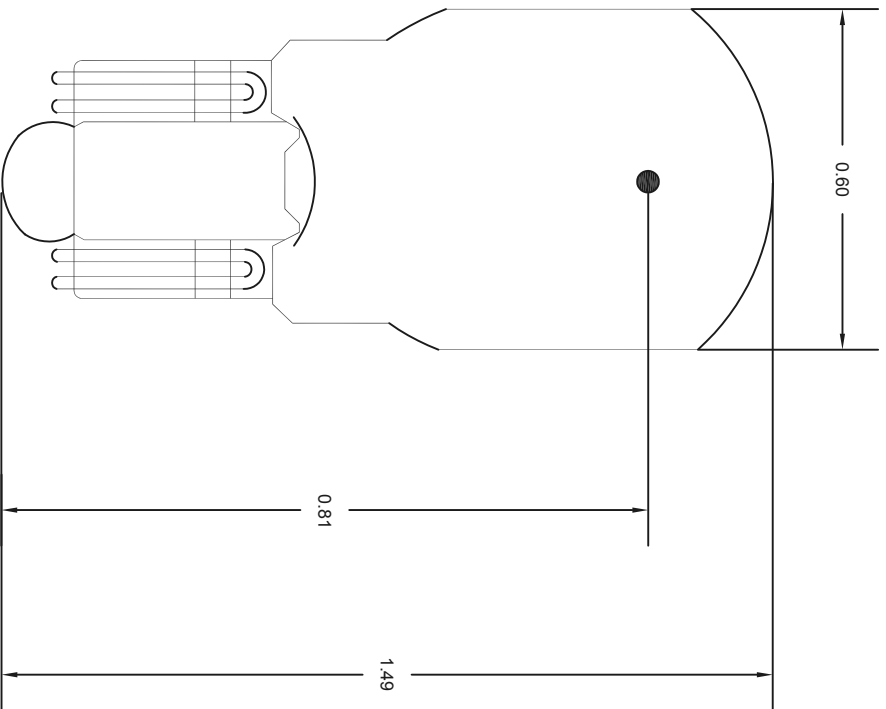


Specifications:

Volts	Amps	Watts	MSCP	Filament	Life (Hours)
12.8	1.0	13	12	C-2R	1000

Part Number Table

Description	Part Number
T-5 Wedge Base Lamp	912



Dimensions : Millimetres

DISCLAIMER:  
ALL STATEMENTS AND TECHNICAL INFORMATION CONTAINED HEREIN ARE BASED UPON INFORMATION AND/OR TESTS WE BELIEVE TO BE ACCURATE AND RELIABLE. SINCE CONDITIONS OF USE ARE BEYOND OUR CONTROL, THE USER SHALL DETERMINE THE SUITABILITY OF THE PRODUCT FOR THE INTENDED USE AND ASSUME ALL RISK AND LIABILITY WHATSOEVER IN CONNECTION THEREWITH.

TOLERANCES:

UNLESS OTHERWISE SPECIFIED, DIMENSIONS ARE FOR REFERENCE PURPOSES ONLY.

DRAWN BY:

VEE

DATE:

02-08-10

DRAWING TITLE:

T-5 Wedge Base Lamp

CHECKED BY:

JAG

DATE:

03-08-10

SIZE DWG. NO.

XXX

XXX

ELECTRONIC FILE

50N188

REV

A

APPROVED BY:

XXX

DATE:

16-08-10

SCALE: NTS

XXX

U.O.M.: INCHES [mm]

XXX

SHEET: 1

OF 1