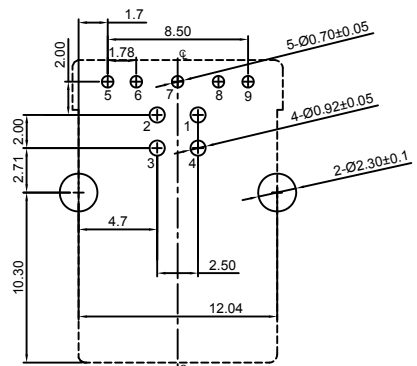
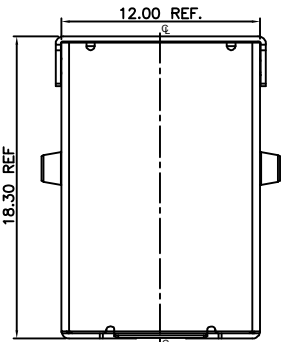
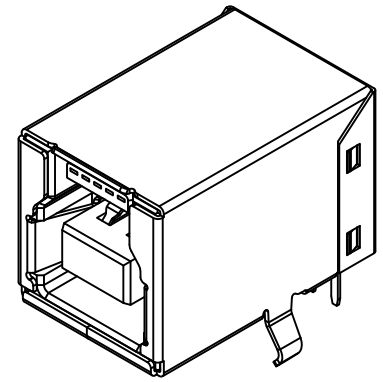
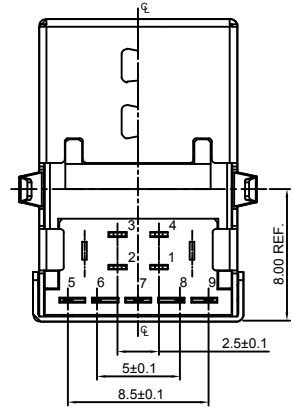
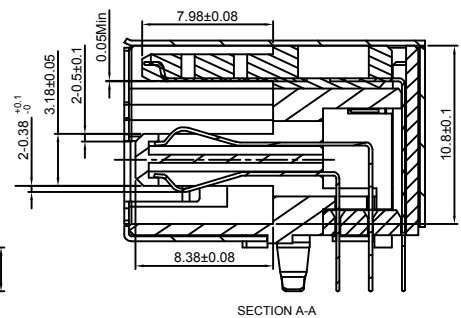
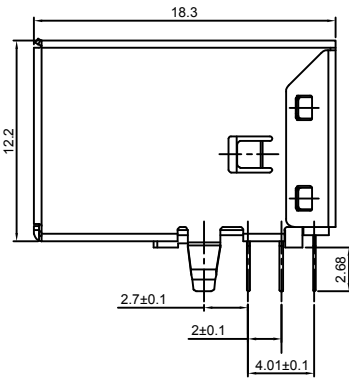
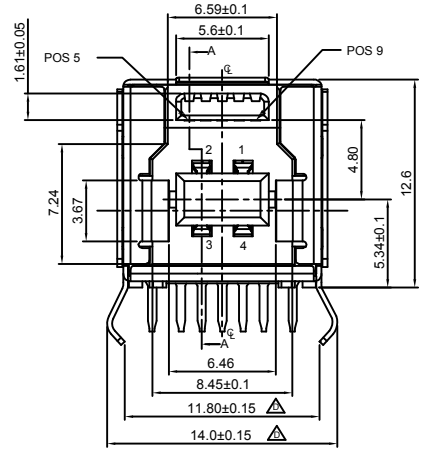


Designed to comply with physical, electrical and environmental requirements of full size USB Standard Compliance (USB3.0).



RECOMMENDED P.C.B LAYOUT  
AS VIEWED FROM COMPONENT SIDE  
Legend:   
■ Solder Area  
□ Component Outline



Ordering Grid  
**USB1080** - **30** - **B**  
 Contact Plating: 30 = 30µ" Gold  
 Packing Options: B = Tray (120 per tray)  
 REQUEST SAMPLES AND QUOTATION

Specifications 规格:

- Materials 材料:  
 Plastic Housing 塑胶外壳: LCP, UL94V-0 Blue  
 Contact Terminal 接触端子: Copper Alloy 铜合金  
 Metallic Shell 金属外壳: Brass (Back Lid - SPCC)  
 Finish 表面处理:  
 Underplating 底层电镀: Nickel  
 Plating 电镀:  
 Contact Area 接触面积: 30µ" Gold  
 Solder Tails 焊接末端: 100µ" Min. Tin  
 Metallic Shell 金属外壳: Nickel  
 Electrical 电气规格:  
 Voltage Rating 电压额定值: 30 V AC  
 Current Rating 电流额定值: 1.0A AC/DC  
 Operating Temperature 工作温度: -25°C to +80°C  
 Contact Resistance 接触电阻值: 30mΩ Max.  
 Insulating Resistance 绝缘电阻值: 500MΩ Min.  
 Dielectric Withstand Voltage 耐电压: 500V AC/Minute  
 Mechanical 机械性规格:  
 Mating Force 插入力: 35N Max.  
 Unmating Force 拨出力: 10N Min.  
 Durability 耐久性: 5000

By	ASE	ASE	CM	ASE
DETAIL	DRAWING RELEASE	CHANGE TO SHELL & INS. MATERIAL	PCNUSB1080-001	PCNUSB1080-002
REV	A	B	C	D
DATE	16/05/11	17/06/11	23/09/11	16/02/12



Tolerances (Except as noted)	Part Number:-	Date:-
Dimensions in mm	<b>USB1080</b>	<b>23 SEP 11</b>
X.X ± 0.3 X.XX ± 0.25 X.XXX ± 0.1	X.X° ± 2° X.XX° ± 1° X.XXX° ± 0.5°	Description:-
Third Angle Projection		USB 3.0 RECEPTACLE, TYPE B, THROUGH HOLE, HORIZONTAL, 9 PIN, W/KINKED SHELL STAKES © THIS DRAWING IS CONFIDENTIAL AND MUST NOT BE COPIED OR DISCLOSED WITHOUT WRITTEN CONSENT

**GCT**

www.globalconnectortechology.com

Scale	Revision	Material	Drawn by	Sheet No.
NTS	D	See Note	ASE	E & OE 1/1