

[www.icmcorp.net](http://www.icmcorp.net)

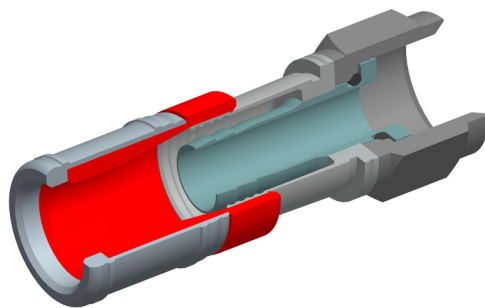
The FS6U is our Universal "F" type connector that fits most RG6 standard, tri-shield, and quad-shield coaxial cable.



**CPLCCT-SLM**  
Utilize This Tool

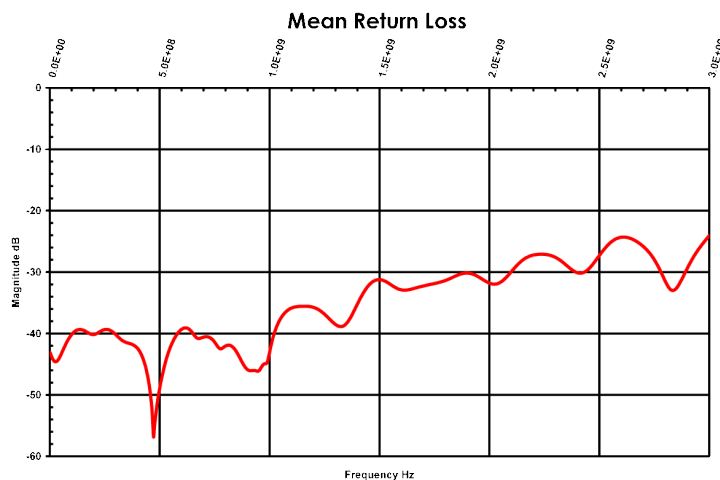
Specifications:

- 75 Ohm Construction
- DC-1 GHz > 30 dB Return Loss < 1.07 VSWR
- DC-2 GHz > 26 dB Return Loss < 1.10 VSWR
- DC-3 GHz > 23 dB Return Loss < 1.16 VSWR
- Cable Pullout Force Exceeding 65 in/lbs.
- Body Material Brass
- Body Material (Plating) Nickel



| Coax Sizing (inches) | Min ~ Max     |
|----------------------|---------------|
| Center               | .0399 ~ .0418 |
| Dielectric           | .180 ~ .193   |
| Outer Jacket         | .265 ~ .305   |

| Coax Sizing (mm) | Min ~ Max   |
|------------------|-------------|
| Center           | 1.01 ~ 1.06 |
| Dielectric       | 4.57 ~ 4.90 |
| Outer Jacket     | 6.73 ~ 7.75 |



| Frequency (Hz) | dB       |
|----------------|----------|
| 5 MHz          | -43.4 dB |
| 15 MHz         | -44.2 dB |
| 550 MHz        | -42.1 dB |
| 750 MHz        | -41.4 dB |
| 1000 MHz       | -43.1 dB |
| 2000 MHz       | -31.8 dB |
| 3000 MHz       | -24.1 dB |

Lower return loss (dB) equates to less reflection through the connector while maintaining signal strength