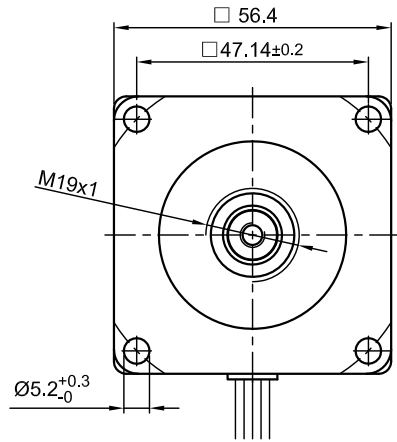
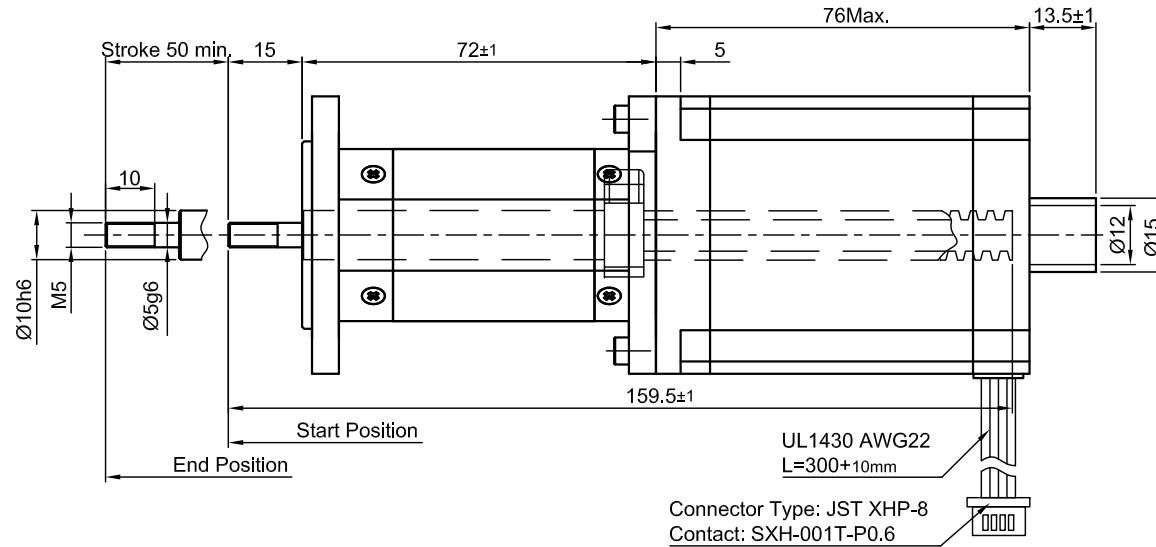


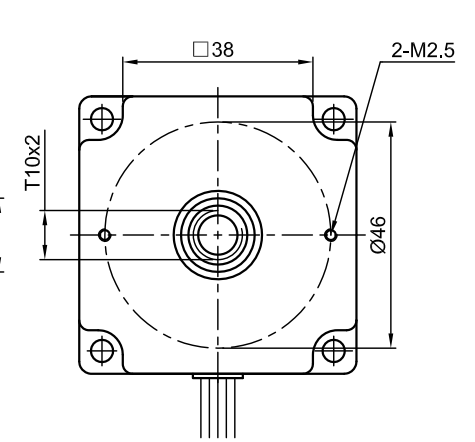
Front view and mounting



Side view



Rear view



SPECIFICATION	UNIPOLAR OR BIPOLAR-1 WINDING		BIPOLAR	
	SERIAL	PARALLEL	SERIAL	PARALLEL
AMPS/PHASE	3.0	2.1	2.1	4.2
RESISTANCE/PHASE (Ohms)@25°C	1.0±10%	2.0±10%	2.0±10%	0.5±10%
INDUCTANCE/PHASE (mH) @1KHz	2.2±20%	8.8±20%	8.8±20%	2.2±20%
SPINDLE PITCH (mm) [in]	2 [0.078]			
THRUST (N) (lb)				
RESOLUTION (mm/FULLSTEP)	0.01			
STATIC THRUST (NO CURRENT)				
MAX. SPEED (mm/sec.) at 48V	50			
MAX. SPEED WITH MAX. THRUST (mm/sec.)				
WEIGHT (Kg) [lb]	1.2 [2.64]			
TEMPERATURE RISE: MAX.80°C (MOTOR STANDSTILL; FOR 2 PHASE ENERGIZED)				
AMBIENT TEMPERATURE -10°~ 50°C [14°F ~ 122°F]				
INSULATION RESISTANCE 100 MOhm (UNDER NORMAL TEMPERATURE AND HUMIDITY)				
INSULATION CLASS B 130° [266°F]				
DIELECTRIC STRENGTH 500VAC FOR 1 MIN. (BETWEEN THE MOTOR COILS AND THE MOTOR CASE)				
AMBIENT HUMIDITY MAX. 85% (NO CONDENSATION)				

Please regard the application note at www.nanotec.com for further informations.

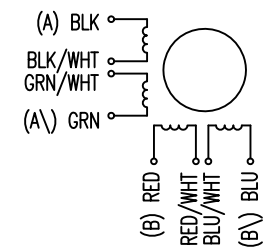
Shaft play is adjustable at the motor.

TYPE OF CONNECTION (EXTERN)				MOTOR		
UNIPOLAR	BIPOLAR			CONNECTOR PIN NO.	LEADS	WINDING
	1WINDING	SERIAL	PARALLEL			
A	A	A	A	1	BLK	A
COM	A			3	BLK/WHT	
A\		A\	A\	2	GRN/WHT	A\
B	B	B	B	4	GRN	B
COM	B			5	RED	
B\		B\	B\	7	RED/WHT	B\
				6	BLU/WHT	
				8	BLU	

FULL STEP 2 PHASE-Ex., WHEN FACING MOUNTING END (X)

STEP	A	B	A\	B\	CCW	CW
1	+	+	-	-	↓	↑
2	-	+	+	-	↑	↓
3	-	-	+	+	↓	↑
4	+	-	-	+	↑	↓

WIRING DIAGRAM



REV	DESCRIPTION	DATE	APVD	L5918L3008-T10x2-A50	SCALE FREE	APVD	CHKD	03.09.10	DWG.NO	L5918L3008-T10x2-A50
					X ±0.5		ZYL	03.09.10		
					1PL ±0.2		GYQ	03.09.10		
					2PL ±0.1					
					ANGLE ±30'		SIGNATURE	DATE		



LINEAR AKTUATOR

DWG.NO

L5918L3008-T10x2-A50