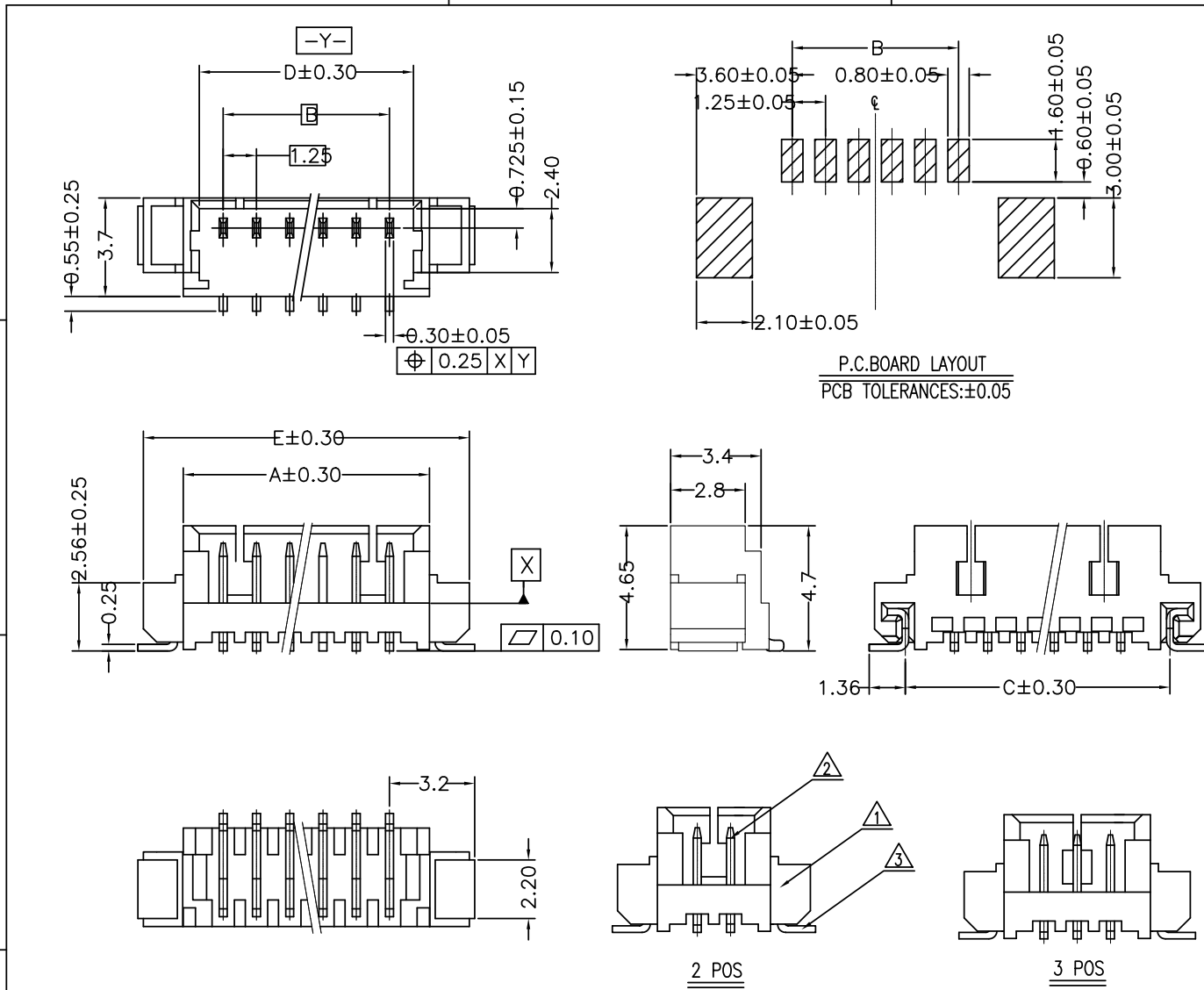




Copyright FCI.



**NOTES**  
**1. SPECIFICATIONS**  
 Current Rating: 1A AC,DC  
 Voltage Rating: 125V AC,DC  
 Temperature Range: -40°C ~ +105°C  
 Contact Resistance: 20m $\Omega$  Max.  
 Insulation Resistance: 100M $\Omega$  Min.  
 Withstanding Voltage: 500V AC/minute  
**2. Material & finish:**  
 Housing: Natural Thermoplastic, UL94V-0  
 Contact and metal hold-down: Phosphor Bronze  
 Plating of contact: Matte Tin or gold plating over Nickel  
 Plating of metal hold-down: Matte Tin over Nickel  
**3. Ordering Information & Dimensions:**  
 10114828- X X X XX LF  
 Material: LCP, LF: See note A  
 1: LCP, pin counts from 02~15  
 Plating: 0: Matte Tin, 1: Gold Flash  
 Packaging: 1: Tape & Reel

Part No.	Dimensions					
	POS	A	B	C	D	E
10114828-xxx02LF	2	4.25	1.25±0.10	4.94	3.05	7.25
10114828-xxx03LF	3	5.50	2.50±0.10	6.19	4.30	8.50
10114828-xxx04LF	4	6.75	3.75±0.10	7.44	5.55	9.75
10114828-xxx05LF	5	8.00	5.00±0.10	8.69	6.80	11.00
10114828-xxx06LF	6	9.25	6.25±0.15	9.94	8.05	12.25
10114828-xxx07LF	7	10.50	7.50±0.15	11.19	9.30	13.50
10114828-xxx08LF	8	11.75	8.75±0.15	12.44	10.55	14.75
10114828-xxx09LF	9	13.00	10.00±0.15	13.69	11.80	16.00
10114828-xxx10LF	10	14.25	11.25±0.20	14.94	13.05	17.25
10114828-xxx11LF	11	15.50	12.50±0.20	16.19	14.30	18.50
10114828-xxx12LF	12	16.75	13.75±0.20	17.44	15.55	19.75
10114828-xxx13LF	13	18.00	15.00±0.20	18.69	16.80	21.00
10114828-xxx14LF	14	19.25	16.25±0.20	19.94	18.05	22.25
10114828-xxx15LF	15	20.50	17.50±0.20	21.19	19.30	23.50

Note A: The LF means RoHS compliance, the housing will withstand exposure to peak temperature 260 degree C for 5 sec in the IR re-flow process.

ITEM	MATERIAL	DESCRIPTION
1	THERMOPLASTIC HIGH TEMPERATURE	HOUSING
2	COPPER ALLOY	TERMINAL
3	COPPER ALLOY	HOLD DOWN

rev	ecn no	dr	date
A	T10-0145	J H	12/1/10
B	ELX-N-007665	J.Z	2011-11-01
C	ELX-N-007764	J.Z	2011-11-04

www.fciconnect.com

surface 6.4 / ISO 1302 tolerance std / ISO 406 ISO 1101 projection / MM

ANGULAR LINEAR 0.X ±0.25 size A4 Scale 1.000

0.XX ±0.15 ECN ELX-N-007764

0.XXX - Spec ref

Dr JASON HSU 12/1/10

Eng JASON HSU 12/1/10

Chr GARY HSIEH 12/1/10

Appr JOSEPH HSIA 12/1/10

Product family WTB

FCI title WTB 1.25MM WAFER 180° SMT

catalog no

customer

sheet 1 of 1

10114828

Rev. C

REV F - 2006-04-17