



# Electronic Products and Relays Selection Table Interface Relays CR-Range and R600 Range

# Pluggable Interface Relays

## CR-M Range

Type	Order number
CR-M012DC2	1SVR 405 611 R4000
CR-M024DC2	1SVR 405 611 R1000
CR-M048DC2	1SVR 405 611 R6000
CR-M060DC2	1SVR 405 611 R4200
CR-M110DC2	1SVR 405 611 R8000
CR-M125DC2	1SVR 405 611 R8200
CR-M220DC2	1SVR 405 611 R9000
CR-M024AC2	1SVR 405 611 R0000
CR-M048AC2	1SVR 405 611 R6000
CR-M110AC2	1SVR 405 611 R7000
CR-M120AC2	1SVR 405 611 R2000
CR-M230AC2	1SVR 405 611 R3000
CR-M012DC3	1SVR 405 612 R4000
CR-M024DC3	1SVR 405 612 R1000
CR-M048DC3	1SVR 405 612 R6000
CR-M060DC3	1SVR 405 612 R4200
CR-M110DC3	1SVR 405 612 R8000
CR-M125DC3	1SVR 405 612 R8200
CR-M220DC3	1SVR 405 612 R9000
CR-M024AC3	1SVR 405 612 R0000
CR-M048AC3	1SVR 405 612 R5000
CR-M060AC3	1SVR 405 612 R6200
CR-M110AC3	1SVR 405 612 R7000
CR-M120AC3	1SVR 405 612 R2000
CR-M230AC3	1SVR 405 612 R3000
CR-M012DC4	1SVR 405 613 R4000
CR-M024DC4	1SVR 405 613 R1000
CR-M048DC4	1SVR 405 613 R6000
CR-M060DC4	1SVR 405 613 R4200
CR-M110DC4	1SVR 405 613 R8000
CR-M125DC4	1SVR 405 613 R8200

### Input voltage

12 V DC	■																																					
24 V DC		■																																				
48 V DC			■																																			
60 V DC				■																																		
110 V DC					■																																	
125 V DC						■																																
220 V DC							■																															
24 V AC								■																														
48 V AC									■																													
60 V AC										■																												
110 V AC											■																											
120 V AC												■																										
230 V AC													■																									

### Output rating

250 V 16 A																																					
250 V 8 A																																					
250 V 12 A	■	■	■	■	■	■	■	■	■	■	■	■	■	■	■	■	■	■	■	■	■	■	■	■	■	■	■	■	■	■	■	■	■	■	■	■	
250 V 10 A												■	■	■	■	■	■	■	■	■	■	■	■	■	■	■	■	■	■	■	■	■	■	■	■	■	
250 V 6 A																																				■	■

### Output contacts

c/o	2	2	2	2	2	2	2	2	2	2	2	3	3	3	3	3	3	3	3	3	3	3	3	3	3	3	3	3	3	3	3	3	3	3	3	
Gold contact																																				
LED																																				
Free-wheeling diode																																				

## Accessories – Sockets

Type	Version	Connection terminals	Order code	Pack. unit pieces
<b>Sockets</b>				
CR-M2LS	Logical socket for 2 c/o	screw	1SVR 405 651 R1100	10
CR-M3LS	Logical socket for 3 c/o		1SVR 405 651 R2100	10
CR-M4LS	Logical socket for 2/4 c/o		1SVR 405 651 R3100	10
CR-M2LC	Logical socket for 2 c/o	spring connection	1SVR 405 651 R1200	10
CR-M4LC	Logical socket for 2/4 c/o		1SVR 405 651 R3200	10
CR-M2SS	Standard socket for 2 c/o	screw	1SVR 405 651 R1000	10
CR-M3SS	Standard socket for 3 c/o		1SVR 405 651 R2000	10
CR-M4SS	Standard socket for 2/4 c/o		1SVR 405 651 R3000	10
CR-M2SF	Standard socket for 2 c/o	fork type	1SVR 405 651 R1300	10
CR-M4SF	Standard socket for 2/4 c/o		1SVR 405 651 R3300	10

### Socket accessories

CR-MH	Plastic holder		1SVR 405 659 R1000	10
CR-MH1	Metal holder		1SVR 405 659 R1100	25
CR-MJ	Jumper bar for sockets with screw connection		1SVR 405 658 R6000	10

### Markers

CR-M	Marker		1SVR 405 658 R1000	10
------	--------	--	--------------------	----

Item ID	Quantity	Item ID	Quantity	Item ID	Quantity	Item ID	Quantity	Item ID	Quantity		
CR-M220DC4	4	1SVR 405 613 R9000	1	CR-M024AC4	4	1SVR 405 613 R0000	1	CR-M048AC4	4	1SVR 405 613 R5000	1
CR-M110AC4	4	1SVR 405 613 R7000	1	CR-M120AC4	4	1SVR 405 613 R2000	1	CR-M230AC4	4	1SVR 405 613 R3000	1
CR-M012DC2L	2	1SVR 405 611 R4100	1	CR-M024DC2L	2	1SVR 405 611 R1100	1	CR-M048DC2L	2	1SVR 405 611 R6100	1
CR-M060DC2L	2	1SVR 405 611 R4300	1	CR-M110DC2L	2	1SVR 405 611 R8100	1	CR-M125DC2L	2	1SVR 405 611 R8300	1
CR-M220DC2L	2	1SVR 405 611 R9100	1	CR-M024AC2L	2	1SVR 405 611 R0100	1	CR-M048AC2L	2	1SVR 405 611 R5100	1
CR-M110AC2L	2	1SVR 405 611 R7100	1	CR-M120AC2L	2	1SVR 405 611 R3100	1	CR-M230AC2L	2	1SVR 405 611 R3100	1
CR-M012DC3L	3	1SVR 405 612 R4100	1	CR-M024DC3L	3	1SVR 405 612 R1100	1	CR-M048DC3L	3	1SVR 405 612 R6100	1
CR-M060DC3L	3	1SVR 405 612 R4300	1	CR-M110DC3L	3	1SVR 405 612 R8100	1	CR-M125DC3L	3	1SVR 405 612 R8300	1
CR-M220DC3L	3	1SVR 405 612 R9100	1	CR-M024AC3L	3	1SVR 405 612 R0100	1	CR-M048AC3L	3	1SVR 405 612 R5100	1
CR-M110AC3L	3	1SVR 405 612 R7100	1	CR-M120AC3L	3	1SVR 405 612 R2100	1	CR-M230AC3L	3	1SVR 405 612 R3100	1
CR-M012DC4L	4	1SVR 405 613 R4100	1	CR-M024DC4L	4	1SVR 405 613 R1100	1	CR-M048DC4L	4	1SVR 405 613 R6100	1
CR-M060DC4L	4	1SVR 405 613 R4300	1	CR-M110DC4L	4	1SVR 405 613 R8100	1	CR-M125DC4L	4	1SVR 405 613 R8300	1
CR-M220DC4L	4	1SVR 405 613 R9100	1	CR-M024AC4L	4	1SVR 405 613 R0100	1	CR-M048AC4L	4	1SVR 405 613 R5100	1
CR-M110AC4L	4	1SVR 405 613 R7100	1	CR-M120AC4L	4	1SVR 405 613 R3100	1	CR-M230AC4L	4	1SVR 405 613 R3100	1



# Pluggable Interface Relays

## CR-P Range

Type	Order number
CR-P012DC1	1SVR 405 600 R4000
CR-P024DC1	1SVR 405 600 R1000
CR-P048DC1	1SVR 405 600 R6000
CR-P110DC1	1SVR 405 600 R8000
CR-P024AC1	1SVR 405 600 R0000
CR-P048AC1	1SVR 405 600 R5000
CR-P110AC1	1SVR 405 600 R7000
CR-P120AC1	1SVR 405 600 R2000
CR-P230AC1	1SVR 405 600 R3000
CR-P012DC2	1SVR 405 601 R4000
CR-P024DC2	1SVR 405 601 R1000
CR-P048DC2	1SVR 405 601 R6000
CR-P110DC2	1SVR 405 601 R8000
CR-P024AC2	1SVR 405 601 R0000
CR-P048AC2	1SVR 405 601 R5000
CR-P110AC2	1SVR 405 601 R7000
CR-P120AC2	1SVR 405 601 R2000
CR-P230AC2	1SVR 405 601 R3000
CR-P024DC2G	1SVR 405 606 R1000
CR-P024AC2G	1SVR 405 606 R0000
CR-P110AC2G	1SVR 405 606 R7000
CR-P230AC2G	1SVR 405 606 R3000

### Input voltage

12 V DC	■																								
24 V DC		■																					■		
48 V DC			■																						
60 V DC																									
110 V DC								■																	
125 V DC																									
220 V DC																									
24 V AC																									
48 V AC																									
60 V AC																									
110 V AC																									
120 V AC																									
230 V AC																									

### Output rating

250 V 16 A	■	■	■	■	■	■	■	■	■																
250 V 8 A																									
250 V 12 A																									
250 V 10 A																									
250 V 6 A																									

### Output contacts

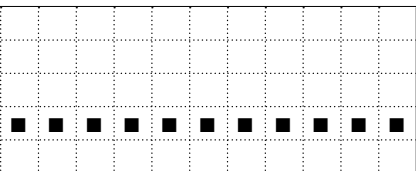
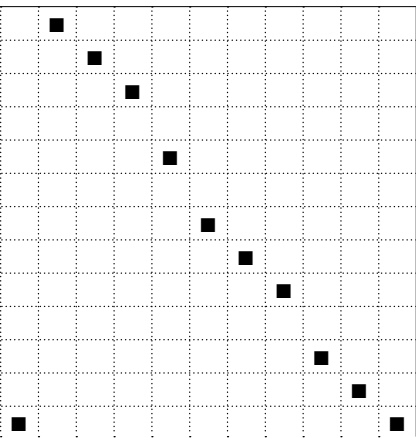
c/o	1	1	1	1	1	1	1	1	1	2	2	2	2	2	2	2	2	2	2							
Gold contact																							2	2	2	2
LED																										
Free-wheeling diode																										

## Accessories - Sockets

Type	Version	Connection terminals	Order code	Pack. unit pieces
<b>Sockets</b>				
CR-PLS	Logical socket with protective separation	screw	1SVR 405 650 R0000	10
CR-PLSx	Logical socket	screw	1SVR 405 650 R0100	10
CR-PLC	Logical socket	spring connection	1SVR 405 650 R0200	10
CR-PSS	Standard socket	screw	1SVR 405 650 R1000	10
<b>Socket accessories</b>				
CR-PH	Plastic Holder		1SVR 405 659 R0000	10
CR-PJ	Jumper bar for sockets with screw connection		1SVR 405 658 R5000	10
<b>Markers</b>				
CR-P	Marker		1SVR 405 658 R0000	10



CR-U230AC2L	1SVR 405 621 R3100
CR-U012DC3L	1SVR 405 622 R4100
CR-U024DC3L	1SVR 405 622 R1100
CR-U048DC3L	1SVR 405 622 R6100
CR-U110DC3L	1SVR 405 622 R8100
CR-U220DC3L	1SVR 405 622 R9100
CR-U024AC3L	1SVR 405 622 R0100
CR-U048AC3L	1SVR 405 622 R5100
CR-U110AC3L	1SVR 405 622 R7100
CR-U120AC3L	1SVR 405 622 R2100
CR-U230AC3L	1SVR 405 622 R3100



■	■	■	■	■	■	■	■	■	■
2	3	3	3	3	3	3	3	3	3

# Pluggable Modules

## CR-P/M Range

Type	Order number	1SVR 405 651 R0000	1SVR 405 652 R0000	1SVR 405 652 R1000	1SVR 405 652 R4000	1SVR 405 652 R4100	1SVR 405 652 R9000	1SVR 405 652 R9100	1SVR 405 653 R0000	1SVR 405 653 R4000	1SVR 405 653 R1000	1SVR 405 654 R0000	1SVR 405 654 R1000	1SVR 405 654 R4000	1SVR 405 654 R4100	1SVR 405 654 R0100	1SVR 405 654 R1100	1SVR 405 655 R0000	1SVR 405 655 R1000	1SVR 405 655 R4000	1SVR 405 655 R4100	1SVR 405 655 R0100	1SVR 405 655 R1100	1SVR 405 656 R0000	1SVR 405 656 R1000	1SVR 405 656 R2000		
CR-P/M 22		■																										
CR-P/M 42			■	■																								
CR-P/M 42V																												
CR-P/M 42B					■	■																						
CR-P/M 42BV																												
CR-P/M 42C							■	■																				
CR-P/M 42CV									■																			
CR-P/M 52B																												
CR-P/M 52D																												
CR-P/M 52C																												
CR-P/M 62																												
CR-P/M 62V																												
CR-P/M 62E																												
CR-P/M 62EV																												
CR-P/M 92																												
CR-P/M 92V																												
CR-P/M 62C																												
CR-P/M 62CV																												
CR-P/M 62D																												
CR-P/M 62DV																												
CR-P/M 92C																												
CR-P/M 92CV																												
CR-P/M 72																												
CR-P/M 72A																												
CR-P/M 82																												

### Accessories for PCB relays CR-P

Type Sockets	Version	Connection	Order number
CR-PLS	Logical socket with safety Isolation	screw	1SVR 405 650 R0000
CR-PLSx	Logical socket	screw	1SVR 405 650 R0100
CR-PLC	Logical socket	spring	1SVR 405 650 R0200
CR-PSS	Standard socket	screw	1SVR 405 650 R1000

**Socket accessories**

CR-PH	Plastic holder		1SVR 405 659 R0000
CR-PJ	Jumper bar for sockets with screw connection		1SVR 405 658 R5000

### Assesories for miniature relays CR-M

Type Sockets	Version
CR-M2LS	Logical socket for 2 c/o contacts
CR-M3LS	Logical socket for 3 c/o contacts
CR-M4LS	Logical socket for 2/4 c/o contacts
CR-M2LC	Logical socket for 2 c/o contacts
CR-M4LC	Logical socket for 2/4 c/o contacts
CR-M2SS	Standard socket for 2 c/o contacts
CR-M3SS	Standard socket for 3 c/o contacts
CR-M4SS	Standard socket for 2/4 c/o contacts
CR-M2SF	Standard socket for 2 c/o contacts
CR-M4SF	Standard socket for 2/4 c/o contacts

### Socket accessories

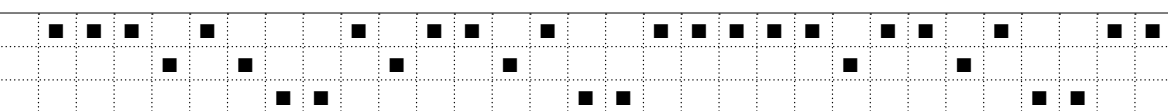
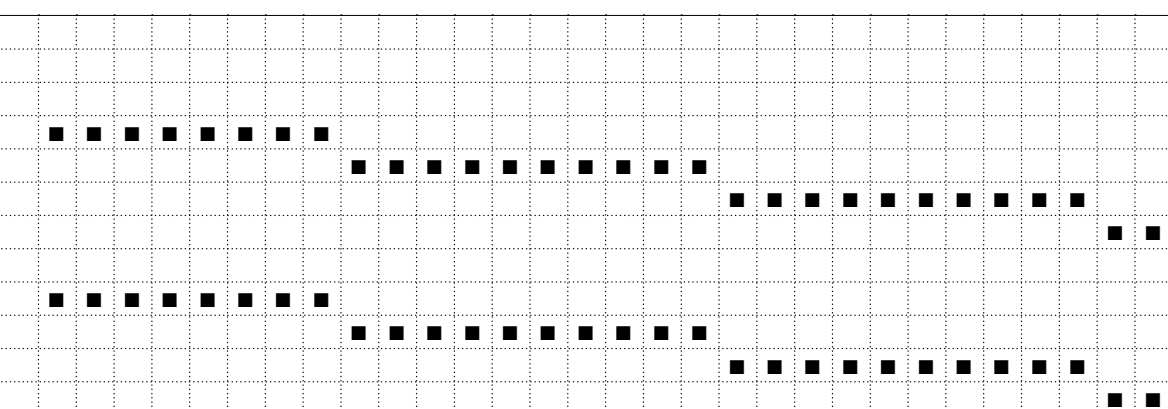
CR-MH	Plastic holder
CR-MH1	Metal holder
CR-MJ	Jumper bar for sockets with screw connection



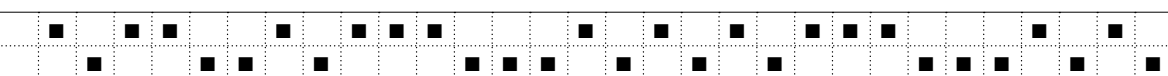




RB 111A-48-60VAC/DC	1SNA 645 015 R2000
RBR 111A-48-60VAC/DC	1SNA 645 515 R2200
RB 121A-48-60VAC/DC	1SNA 645 002 R0400
RBR 121A-48-60VAC/DC	1SNA 645 006 R0000
RBR 121A-48-60VAC/DC	1SNA 645 502 R0600
RBR 121A-48-60VAC/DC	1SNA 645 506 R0200
RB 122A-48-60VAC/DC	1SNA 645 040 R1500
RBR 122A-48-60VAC/DC	1SNA 645 540 R1700
RB 121A-115VAC/DC	1SNA 645 003 R0500
RB 121A-115VAC/DC	1SNA 645 007 R0100
RB 121AR-115VAC/DC	1SNA 645 046 R0700
RBR 121A-115VAC/DC	1SNA 645 503 R0700
RBR 121A-115VAC/DC	1SNA 645 507 R0300
RBR 121AR-115VAC/DC	1SNA 645 546 R0100
RB 122A-115VAC/DC	1SNA 645 041 R0200
RBR 122A-115VAC/DC	1SNA 645 541 R0400
RB 111A-115VAC/DC	1SNA 645 016 R2100
RBR 111A-115VAC/DC	1SNA 645 516 R2300
RB 111A-230VAC/DC	1SNA 645 017 R2200
RBR 111A-230VAC/DC	1SNA 645 517 R2400
RB 121A-230VAC/DC	1SNA 645 004 R0400
RB 121A-230VAC/DC	1SNA 645 008 R1200
RB 121AR-230VAC/DC	1SNA 645 011 R2400
RBR 121A-230VAC/DC	1SNA 645 504 R0000
RBR 121A-230VAC/DC	1SNA 645 508 R1400
RBR 121AR-230VAC/DC	1SNA 645 511 R2600
RB 122A-230VAC/DC	1SNA 645 013 R2600
RBR 122A-230VAC/DC	1SNA 645 513 R2000
BR 121 A 60-230VAC/DC	1SNA 645 020 R0100
RBR 121 A 60-230VAC/DC	1SNA 645 520 R0300



		1	1	1	1	2	2	1	1	1	1	1	1	2	2					1	1	1	1	1	1	2	2	1	1	
1	1																													



## Characteristics

### R600 series

Standard range in screw clamp or spring clamp versions

- Spacing : 6 mm
- Wire size : 2.5 mm<sup>2</sup> (4 mm<sup>2</sup> solid wire)
- Contact type : 1 NO, 1 NC, 1 SPDT, 1 DPDT from 1 mA to 8 A / 250 V
- Transistor : 100 mA  
MOS : 1 A to 5 A  
Triac : 1 A to 2 A

## Accessories

Type	Description	Order number	Pack.
BADH V0	End Section	1 SNA 116 900 R2700	50
BADL V0	End Section	1 SNA 399 903 R0200	50
BAM2 V0	End Section	1 SNA 399 967 R0100	50
SC 612	Separator end section	1 SNA 290 474 R0200	10
BJ 612-10	Divisible shunt 10 poles	1 SNA 290 488 R0100	10
BJ 612-70	Divisible shunt 70 poles	1 SNA 290 489 R0200	10
D4/12-3-3	Screw clamp distribution block sp. 12 mm	1 SNA 645 031 R2000	5
D4/12-3R-3R	Screw clamp distribution block sp. 12 mm	1 SNA 645 531 R2200	5
FC2	Test plug DIA. 2 mm	1 SNA 007 865 R2600	10

# Interface Relays and Optocouplers

## R600 Optocouplers

Type	Order number
OBIC 0100 5-12VDC	1SNA 645 047 R0000
OBIC 0100 5-12VDC	1SNA 645 547 R0200
OBIC 0100 24VDC	1SNA 645 021 R2600
OBIC 0100 24VDC	1SNA 645 521 R2000
OBIC 0100 48-60VAC/DC	1SNA 645 049 R1200
OBIC 0100 48-60VAC/DC	1SNA 645 549 R1400
OBIC 0100 115-230VAC/DC	1SNA 645 022 R2700
OBIC 0100 115-230VAC/DC	1SNA 645 522 R2100
OBOC 1000-5-12VDC	1SNA 645 050 R1700
OBOC 1000-5-12VDC	1SNA 645 550 R1100
OBOC 1000-24VDC	1SNA 645 051 R0400
OBOC 1500-24VAC/DC	1SNA 645 025 R2200
OBOC 5000-24VDC	1SNA 645 024 R2100
OBOC 1000-24VDC	1SNA 645 561 R0600
OBOC 1500-24VAC/DC	1SNA 645 525 R2400
OBOC 5000-24VDC	1SNA 645 524 R2300
OBOC 1000-48-60VAC/DC	1SNA 645 053 R0600
OBOC 1000-48-60VAC/DC	1SNA 645 553 R0000
OBOC 1000-115VAC/DC	1SNA 645 054 R0700
OBOC 5000-115VAC/DC	1SNA 645 058 R1300
OBOC 1000-115VAC/DC	1SNA 645 554 R0100
OBOC 5000-115VAC/DC	1SNA 645 558 R1500
OBOC 1000-230VAC/DC	1SNA 645 026 R2300
OBOC 5000-230VAC/DC	1SNA 645 059 R1400
OBOC 1000-230VAC/DC	1SNA 645 526 R2500
OBOC 5000-230VAC/DC	1SNA 645 559 R1600
OBOA 1000-24VDC	1SNA 645 027 R2400
OBOA 2000-24VDC	1SNA 645 029 R0600
OBOA 1000-24VDC	1SNA 645 527 R2600
OBOA 2000-24VDC	1SNA 645 529 R0000

Input voltage	OBIC 0100 5-12VDC	OBIC 0100 5-12VDC	OBIC 0100 24VDC	OBIC 0100 24VDC	OBIC 0100 48-60VAC/DC	OBIC 0100 48-60VAC/DC	OBIC 0100 115-230VAC/DC	OBIC 0100 115-230VAC/DC	OBOC 1000-5-12VDC	OBOC 1000-5-12VDC	OBOC 1000-24VDC	OBOC 1500-24VAC/DC	OBOC 5000-24VDC	OBOC 1000-48-60VAC/DC	OBOC 1000-48-60VAC/DC	OBOC 1000-115VAC/DC	OBOC 5000-115VAC/DC	OBOC 1000-115VAC/DC	OBOC 5000-115VAC/DC	OBOC 1000-230VAC/DC	OBOC 5000-230VAC/DC	OBOC 1000-230VAC/DC	OBOC 5000-230VAC/DC	OBOA 1000-24VDC	OBOA 2000-24VDC	OBOA 1000-24VDC	OBOA 2000-24VDC	
5 - 12 V DC	■	■							■	■																		
24 V DC			■	■							■	■	■	■	■										■	■	■	■
48 - 60 V DC					■	■									■	■												
115 - 230 V DC							■	■																				
115 V DC																■	■	■	■									
230 V DC							■	■												■	■	■	■					
24 V AC											■																	
48 - 60 V AC					■	■									■	■												
115-230 V AC							■	■																				
115 V AC																■	■	■	■									
230 V AC																			■	■	■	■						

Output rating	OBIC 0100 5-12VDC	OBIC 0100 5-12VDC	OBIC 0100 24VDC	OBIC 0100 24VDC	OBIC 0100 48-60VAC/DC	OBIC 0100 48-60VAC/DC	OBIC 0100 115-230VAC/DC	OBIC 0100 115-230VAC/DC	OBOC 1000-5-12VDC	OBOC 1000-5-12VDC	OBOC 1000-24VDC	OBOC 1500-24VAC/DC	OBOC 5000-24VDC	OBOC 1000-48-60VAC/DC	OBOC 1000-48-60VAC/DC	OBOC 1000-115VAC/DC	OBOC 5000-115VAC/DC	OBOC 1000-115VAC/DC	OBOC 5000-115VAC/DC	OBOC 1000-230VAC/DC	OBOC 5000-230VAC/DC	OBOC 1000-230VAC/DC	OBOC 5000-230VAC/DC	OBOA 1000-24VDC	OBOA 2000-24VDC	OBOA 1000-24VDC	OBOA 2000-24VDC	
100 mA	■	■	■	■	■	■	■	■																				
2 A									■	■	■	■	■	■	■	■	■	■	■	■	■	■	■					
5 A													■															
1 A																									■		■	

Output voltage	OBIC 0100 5-12VDC	OBIC 0100 5-12VDC	OBIC 0100 24VDC	OBIC 0100 24VDC	OBIC 0100 48-60VAC/DC	OBIC 0100 48-60VAC/DC	OBIC 0100 115-230VAC/DC	OBIC 0100 115-230VAC/DC	OBOC 1000-5-12VDC	OBOC 1000-5-12VDC	OBOC 1000-24VDC	OBOC 1500-24VAC/DC	OBOC 5000-24VDC	OBOC 1000-48-60VAC/DC	OBOC 1000-48-60VAC/DC	OBOC 1000-115VAC/DC	OBOC 5000-115VAC/DC	OBOC 1000-115VAC/DC	OBOC 5000-115VAC/DC	OBOC 1000-230VAC/DC	OBOC 5000-230VAC/DC	OBOC 1000-230VAC/DC	OBOC 5000-230VAC/DC	OBOA 1000-24VDC	OBOA 2000-24VDC	OBOA 1000-24VDC	OBOA 2000-24VDC		
58 V DC	■	■	■	■	■	■	■	■	■	■	■	■	■	■	■	■	■	■	■	■	■	■	■						
400 V AC																										■	■	■	■

Terminal type	OBIC 0100 5-12VDC	OBIC 0100 5-12VDC	OBIC 0100 24VDC	OBIC 0100 24VDC	OBIC 0100 48-60VAC/DC	OBIC 0100 48-60VAC/DC	OBIC 0100 115-230VAC/DC	OBIC 0100 115-230VAC/DC	OBOC 1000-5-12VDC	OBOC 1000-5-12VDC	OBOC 1000-24VDC	OBOC 1500-24VAC/DC	OBOC 5000-24VDC	OBOC 1000-48-60VAC/DC	OBOC 1000-48-60VAC/DC	OBOC 1000-115VAC/DC	OBOC 5000-115VAC/DC	OBOC 1000-115VAC/DC	OBOC 5000-115VAC/DC	OBOC 1000-230VAC/DC	OBOC 5000-230VAC/DC	OBOC 1000-230VAC/DC	OBOC 5000-230VAC/DC	OBOA 1000-24VDC	OBOA 2000-24VDC	OBOA 1000-24VDC	OBOA 2000-24VDC		
Screw	■		■		■		■		■		■	■	■	■	■	■	■	■	■	■	■	■	■			■	■		
Spring		■		■		■		■		■																		■	■

# Accessories

	1SNA 645 061 R0600
OBOA 1000-48-60VAC/DC	1SNA 645 561 R0000
OBROA 1000-48-60VAC/DC	1SNA 645 062 R0700
OBOA 1000-115VAC/DC	1SNA 645 562 R0100
OBROA 1000-115VAC/DC	1SNA 645 028 R0500
OBOA 1000-230VAC/DC	1SNA 645 528 R0700

Type	Description	Order number	Pack.
BADH V0	End Section	1 SNA 116 900 R2700	50
BADL V0	End Section	1 SNA 399 903 R0200	50
BAM2 V0	End Section	1 SNA 399 967 R0100	50
SC 612	Separator end section	1 SNA 290 474 R0200	10
BJ 612-10	Divisible shunt 10 poles	1 SNA 290 488 R0100	10
BJ 612-70	Divisible shunt 70 poles	1 SNA 290 489 R0200	10
D4/12-3-3	Screw clamp distribution block sp. 12 mm	1 SNA 645 031 R2000	5
D4/12-3R-3R	Screw clamp distribution block sp. 12 mm	1 SNA 645 531 R2200	5
FC2	Test plug DIA. 2 mm	1 SNA 007 865 R2600	10

		■		■					
				■		■			
								■	■
		■		■					
				■		■			
								■	■

		■		■		■		■	■

		■		■		■		■	■
--	--	---	--	---	--	---	--	---	---

		■		■		■		■	■
			■		■				■

# Contact us

## **ABB STOTZ-KONTAKT GmbH**

<http://www.abb.com/lowvoltage>

-> Control Products   -> Electronic Relays and Controls  
                                  -> Interface Relays

**[www.abb.com/contacts](http://www.abb.com/contacts)**

### **Note:**

We reserve the right to make technical changes or modify the contents of this document without prior notice. With regard to purchase orders, the agreed particulars shall prevail. ABB AG does not accept any responsibility whatsoever for potential errors or possible lack of information in this document.

We reserve all rights to this document and the subject matter and illustrations contained therein. Any reproduction, disclosure to third parties or utilisation of its contents – in whole or in part – is forbidden without prior written consent from ABB AG.

Copyright© 2011 ABB  
All rights reserved