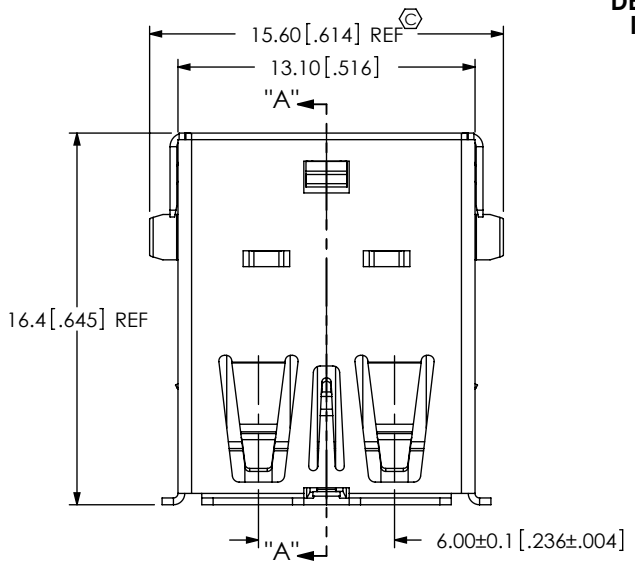


DO NOT SCALE FROM THIS PRINT

DESIGNED & DIMENSIONED IN MILLIMETERS [INCHES]

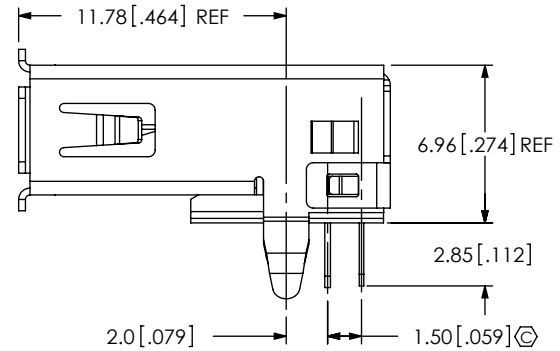
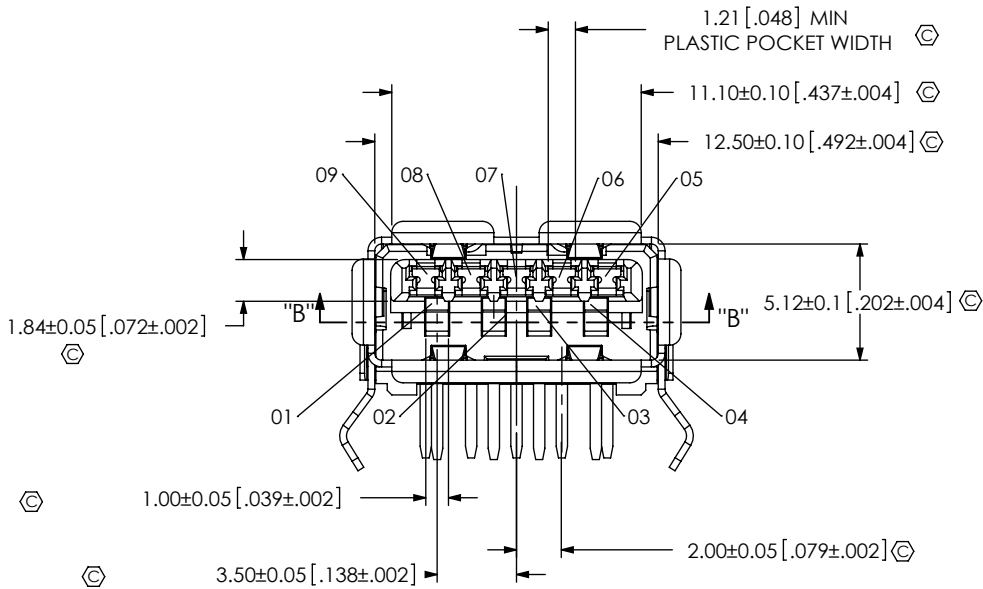
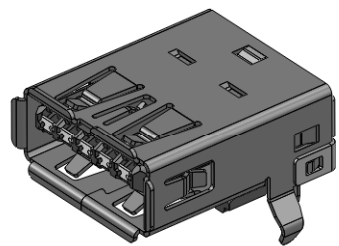


USB3-A-S-X-XX-XX

VERSION -3.0
 TYPE -A
 CONFIGURATION -S: SINGLE

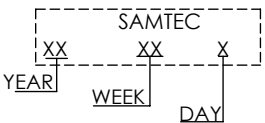
OPTION -TR: TAPE AND REEL
 TERMINATION -TH: THROUGH HOLE
 *-SM: SURFACE MOUNT

PLATING SPECIFICATION
 -S: SELECTIVE, .000030" MIN GOLD ON MATING AREA, .000080" MIN MATTE TIN ON TAILS WITH .000050" MIN NICKEL UNDERPLATE
 -F: .000003" MIN GOLD FLASH ON MATING AREA, .000080" MIN MATTE TIN ON TAILS WITH .000050" MIN NICKEL UNDERPLATE
 SHIELD PLATED:
 0.000050" MIN NICKEL WITH COPPER UNDERPLATE 0.000050" MIN
 *=NOT TOOLED

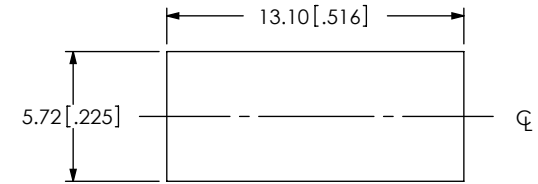
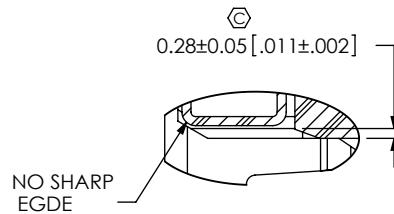
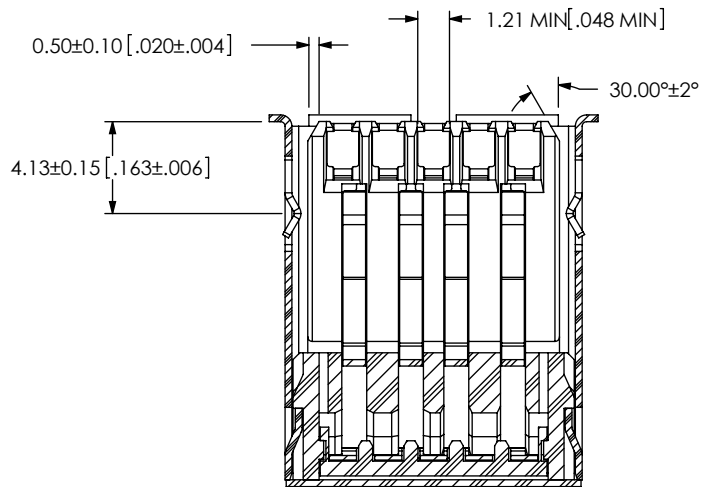
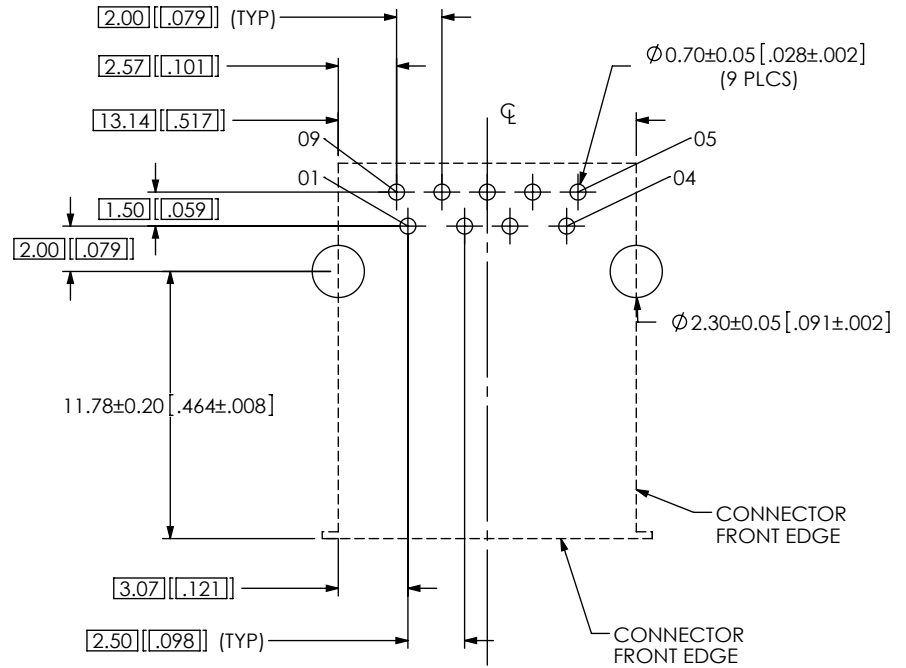
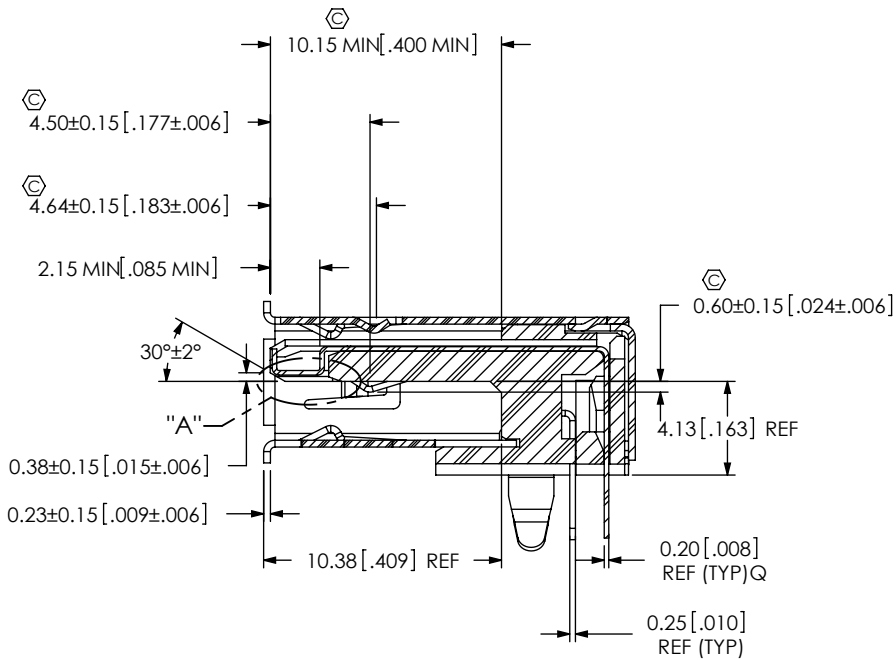


CRITICAL DIMENSION INSPECTION INSTRUCTION TABLE		
ASSEMBLY OPERATION	START-UP INSPECTION INSPECT CODE A	IN-PROCESS INSPECTION INSPECT CODE B
FINISHED ASSEMBLY	C1,C2,C3,C4,C5,C6,C7,C8	

- NOTES:
1. Ⓢ REPRESENTS A CRITICAL DIMENSION.
 2. VENDOR: YANGMING PRECISION OF PLASTIC METAL ELECTRONIC CO.; PART NUMBER: 11160-209001-00.
 3. PART TO BE COMPLIANT WITH USB 3.0 SPECIFICATIONS.
 4. THE COMPONENTS BE ROHS COMPLIANT, RECEPTACLE MATERIALS SHOULD CONFORM TO DIRECTIVE 2002/95/EC OF JANUARY 27, 2003 ON ROHS OR OTHER REGULATORY DIRECTIVES.
 5. TRAY PACKAGE IS STANDARD PACKAGE AND OFFERED BY SUPPLIER.
 6. INK PRINTED SAMTEC LOGO AND DATE CODE:



UNLESS OTHERWISE SPECIFIED, DIMENSIONS ARE IN MILLIMETERS. TOLERANCES ARE: DECIMALS ANGLES X.X: ±0.3 [.01] 2° X.XX: ±0.13 [.005] X.XXX: ±0.051 [.0020]	PROPRIETARY NOTE THIS DOCUMENT CONTAINS INFORMATION CONFIDENTIAL AND PROPRIETARY TO SAMTEC, INC. AND SHALL NOT BE REPRODUCED OR TRANSFERRED TO OTHER DOCUMENTS OR DISCLOSED TO OTHERS OR USED FOR ANY PURPOSE OTHER THAN THAT WHICH IT WAS OBTAINED WITHOUT THE EXPRESSED WRITTEN CONSENT OF SAMTEC, INC.	samtec 520 PARK EAST BLVD, NEW ALBANY, IN 47150 PHONE: 812-944-6733 FAX: 812-948-5047 e-Mail: info@SAMTEC.com code 53322
MATERIAL: DO NOT SCALE DRAWING SHEET SCALE: 3:1	DESCRIPTION: USB3.0 A TYPE RECEPTACLE	
HOUSING: NYLON 6T BLUE UL 94V-0 CONTACT: PHOSPHOR BRONZE C5191-1/2H SHIELD: PHOSPHOR BRONZE C5191-3/4H MAX FLASH ALLOWED: .05{.002} MAX GATE VESTIGE: .05{.002}	DWG. NO. USB3-A-S-X-XX-XX	
c:\enterprise\valf\DWG\MISC\MKTG\USB3-A-S-X-XX-XX-MKT.SLDDRW	BY: ALVIN W	05/25/2010 SHEET 1 OF 2



PROPRIETARY NOTE
THIS DOCUMENT CONTAINS INFORMATION CONFIDENTIAL AND PROPRIETARY TO SAMTEC, INC. AND SHALL NOT BE REPRODUCED OR TRANSFERRED TO OTHER DOCUMENTS OR DISCLOSED TO OTHERS OR USED FOR ANY PURPOSE OTHER THAN THAT WHICH IT WAS OBTAINED WITHOUT THE EXPRESSED WRITTEN CONSENT OF SAMTEC, INC.

DO NOT SCALE DRAWING

SHEET SCALE: 3:1

samtec

520 PARK EAST BLVD, NEW ALBANY, IN 47150
PHONE: 812-944-6733 FAX: 812-948-5047
e-Mail info@SAMTEC.com code 55322

DESCRIPTION: USB3.0 A TYPE RECEPTACLE

DWG. NO. USB3-A-S-X-XX-XX

BY: ALVIN W 05/25/2010 SHEET 2 OF 2