

CONDUCTIVE BOXES + SUBDIVISIONS



conductive standard inserts
see pages 103-114
(Please pay attention
to minimum order quantities!)



NEW

Vacuum-formed standard inserts
made of dissipative material



(on request)

Colours

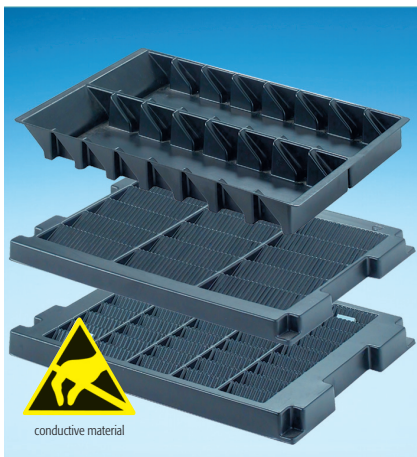


Art. No. **ET-1-6-10** Insert tray for Euro boxes
EK 1-2/LWB (400 x 300) stackable,

Inside dimensions 310 x 250 x 20

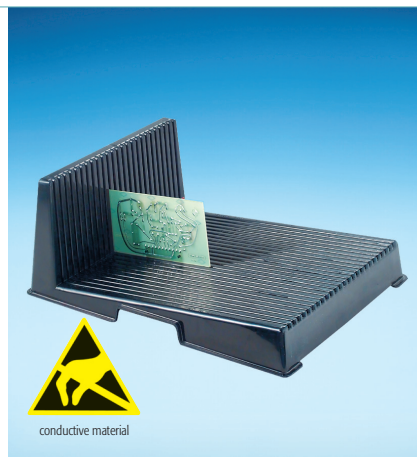
EURO boxes (conductive)

Art. No.	EK 1-6-10	EK 2-6-10	D 1-2-6-10	EK 3-6-10	EK 4-6-10	D 3-4-6-10
Outside dimensions	400 x 300 x 120	400 x 300 x 220	Top cover	600 x 400 x 120	600 x 400 x 270	Top cover



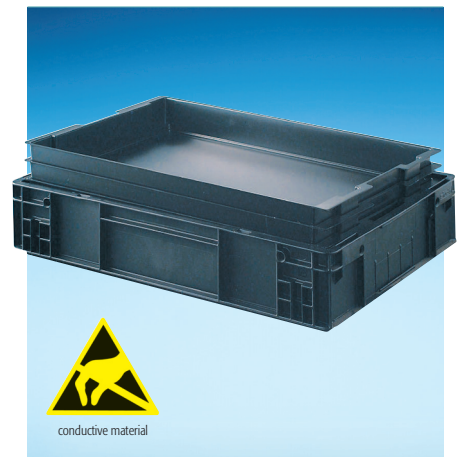
Trays for small printed boards

Art. No.	TL 1 for 16 printed boards 105 x 50
Dimensions	350 x 225 x 30
Art. No.	TL 2 for 15 printed boards 100 x 40
Dimensions	350 x 250 x 30
Art. No.	TL 3 for 45 printed boards 50 x 30
Dimensions	350 x 250 x 23



Printed boards L-profile

Art. No.	LP 1
Dimensions	200 x 274 x 93
Art. No.	LP 2
Dimensions	350 x 263 x 125
	25 slots for printed boards
	Transport/storage Service workshop



Art. No. **ET-3-6-10**
Insert tray for Euro boxes
EK 3-4/LWB stackable,

Inside dimensions 520 x 345 x 60

Dimensions in mm.

Dimensions subject to errors and corrections!