

## Safety Products Hinge Mount Safety Limit Switch

## GSS Series




EN 60947-5-1-3

(GSC, GSE)

pending (GSD)

### FEATURES

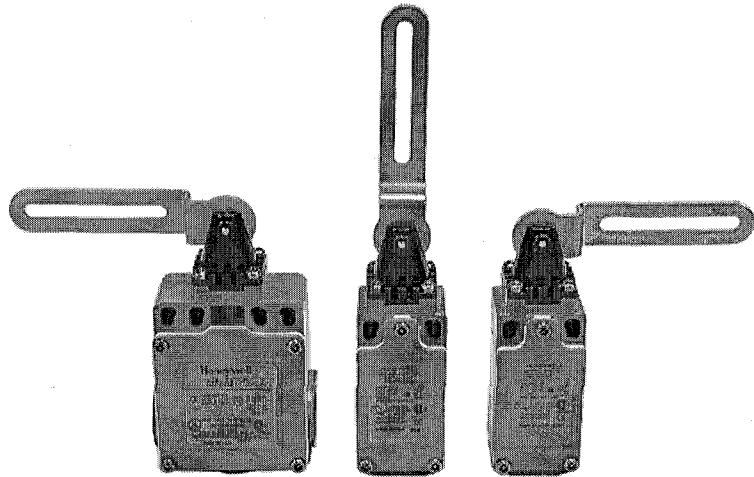
- Positive opening  of NC (normally closed) contacts conforms to IEC/EN 60947-5-1-3
- Low profile limit switch design
- Choice of zinc die-cast or plastic housings
- Tamper resistant design uses TORX® head security screws
- Available with three actuator styles (left, center, right)
- Actuator head may be rotated in 90° increments
- Sealed to IP66; NEMA 1, 4, 12, 13
- Available with wide choice of contact blocks including 1NC/1NO, 2NC, 2NC/2NO, 3NC/1NO, or 4NC

### APPLICATIONS

- Dual direction access doors
- Access doors with space limitations
- Applications where tampering is a concern and internal mounting is desired

### TARGET MARKETS

- Packaging equipment
- Electronic assembly
- Specialty equipment
- Upgrade of installed machinery/equipment to meet code



The Hinge Mount Safety Limit Switch is designed for use on machine access doors as an alternative solution to key operated interlocks and safety limit switches. When the access door is opened, a follower pin (not supplied) slides down the slot in the actuator lever, forcing the actuator lever to rotate and positively open the NC safety circuit to shut off the machine. Closing the access door rotates the actuator lever to the reset position, closing the NC safety contacts.

The Hinge Mount Safety Limit Switch minimizes alignment problems because it may be offset-mounted from the hinge point of the door. The tamper-resistant design and the positive opening contacts provide a higher level of safety than the conventional spring-driven limit switches often used to monitor door position.

### WARNING

#### MISUSE OF DOCUMENTATION

- The information presented in this product sheet is for reference only. DO NOT USE this document as product installation information.
- Complete installation, operation, and maintenance information is provided in the instructions supplied with each product.

**Failure to comply with these instructions could result in death or serious injury.**

PRELIMINARY

### ORDER GUIDES

GSC			
-----	--	--	--

**Head:**

- S1 = Left from center (actuator lever rotated to the left at rest)
- S2 = 90° either direction from center (actuator lever rotated to the center at rest)
- S3 = Right from center (actuator lever rotated to the right at rest)

**Basic Switch:**

- 03 = 1NC/1NO direct acting, break-before-make (BBM)
- 06 = 2NC direct acting

**Housing Conduit Size:**

- A = 1/2 NPT
- B = PG 13,5
- C = 20 mm
- D = PF 1/2

GSC Series Global Safety Switch (Zinc)

GSD			
-----	--	--	--

**Head:**

- S1 = Left from center (actuator lever rotated to the left at rest)
- S2 = 90° either direction from center (actuator lever rotated to the center at rest)
- S3 = Right from center (actuator lever rotated to the right at rest)

**Basic Switch:**

- 03 = 1NC/1NO direct acting, break-before-make (BBM)
- 06 = 2NC direct acting

**Housing Conduit Size:**

- A = 1/2 NPT
- B = PG 13,5
- C = 20 mm
- D = PF 1/2

GSD Series Global Safety Switch (Plastic)

GSE			
-----	--	--	--

**Head:**

- S1 = Left from center (actuator lever rotated to the left at rest)
- S2 = 90° either direction from center (actuator lever rotated to the center at rest)
- S3 = Right from center (actuator lever rotated to the right at rest)

**Basic Switch:**

- 03 = 1NC/1NO direct acting, break-before-make (BBM)
- 06 = 2NC direct acting
- 40 = 4NC direct acting
- 44 = 2NC/2NO direct acting
- 46 = 3NC/1NO direct acting

**Housing Conduit Size:**

- A = 1/2 NPT
- B = PG 13,5
- C = 20 mm
- D = PF 1/2

GSE Series Global Safety Switch (Zinc)

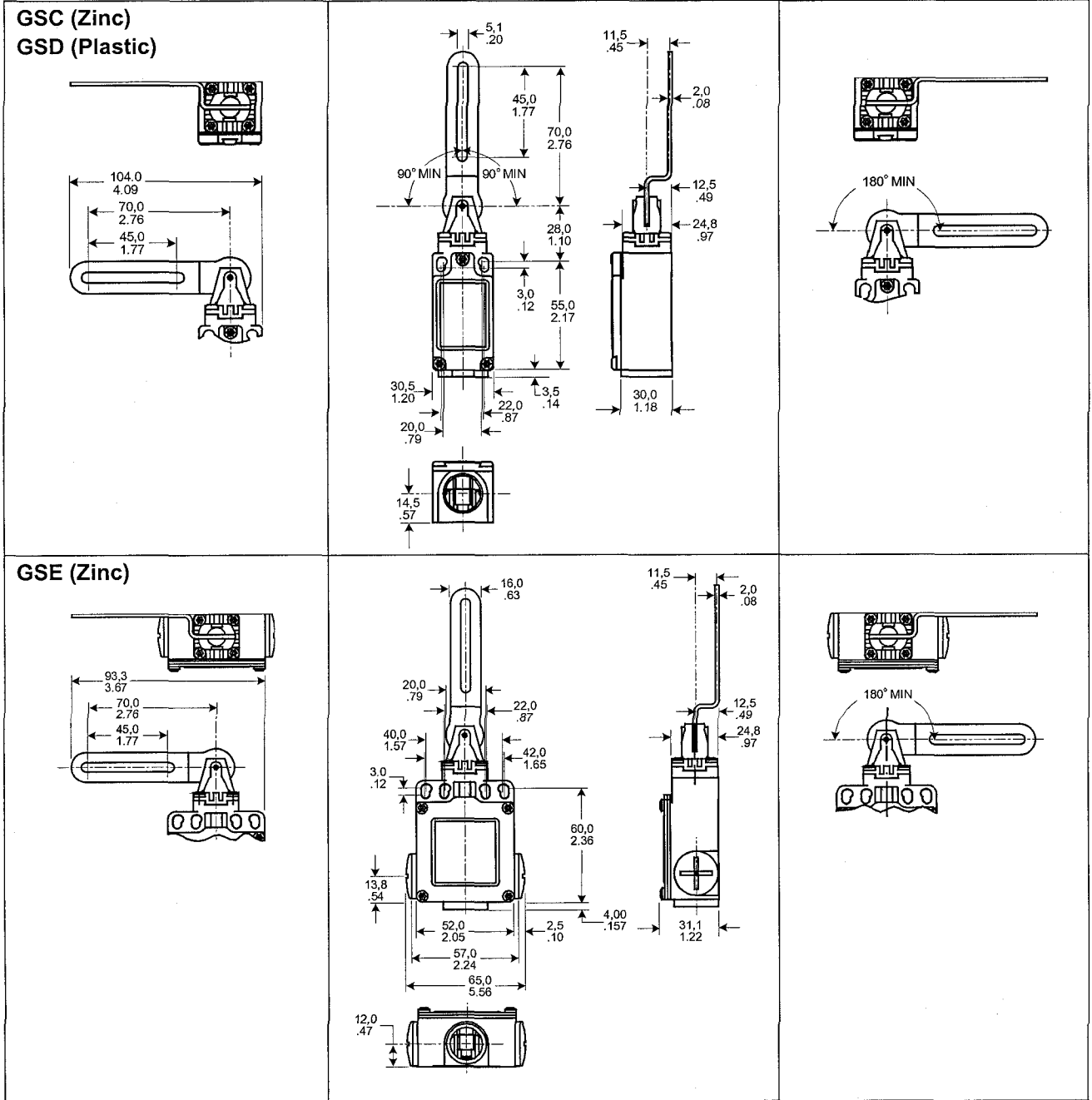
PRELIMINARY

# Safety Products

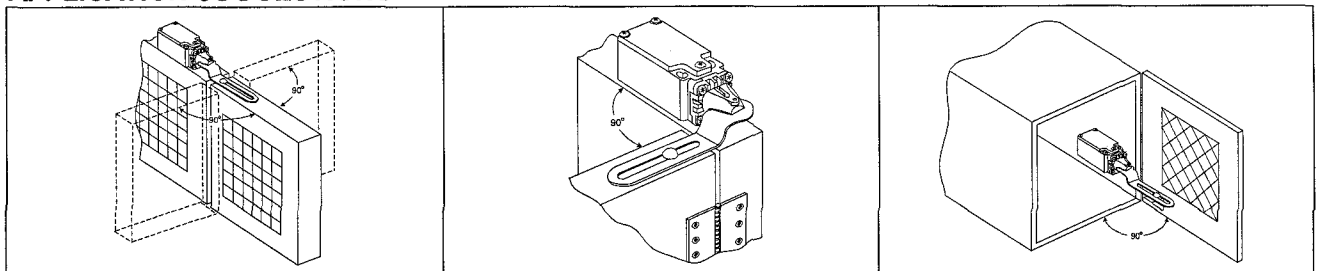
## Hinge Mount Safety Limit Switch

GSS Series

### SWITCH MOUNTING DIMENSIONS (mm/in) (for reference only)



### APPLICATION SUGGESTIONS



PRELIMINARY

For application help: call 1-800-537-6945

# Safety Products

## Hinge Mount Safety Limit Switch

## GSS Series

Designation and Utilization Category		Rated Operational Current I <sub>e</sub> (A) at Rated Operational Voltage U <sub>e</sub>						Switch Type
		120 V	240 V	380 V	480 V	500 V	600 V	
AC15	A600	6 A	3 A	1,9 A	1,5 A	1,4 A	1,2 A	GLD
AC15	A500	6 A	3 A	1,9 A	1,5 A	1,4 A		GLD with 2 NC Basic Switch
AC15	A300	6 A	3 A					GLC and GLE
DC13	Q300	0,55 A	0,27 A					GLC, GLD, GLE
Rated Thermal Current (I <sub>th</sub> )		10 A						
Rated Impulse Withstand (U <sub>imp</sub> )		2500 Vdc						
Maximum Fuse Rating		10 A Quick Acting						
Sealing (GSC, GSE)		IP66; NEMA 1, 4, 12, 13						
(GSD)		IP66; NEMA 1, 12, 13						
Operating Temperature Range		-25 °C to 85 °C (-13 °C to 185 °F)						
Storage Temperature Range		-40 °C to 85 °C (-40 °C to 185 °F)						
Maximum Operating Speed		100 operations/minute						
Mechanical Life		1,000,000						
Complies with:		<ul style="list-style-type: none"> <li>Machinery Directive 89/392/EEC (as amended by Directive 91/369/EEC)</li> <li>EN60947-5-1</li> </ul>						

### WARRANTY/REMEDY

Honeywell warrants goods of its manufacture as being free of defective material and faulty workmanship. Contact your local sales office for warranty information. If warranted goods are returned to Honeywell during that period of coverage, Honeywell will repair or replace without charge those items it finds defective. The foregoing is Buyer's sole remedy and is **in lieu of all other warranties, expressed or implied, including those of merchantability and fitness for a particular purpose.**

While we provide application assistance, personally, through our literature and the Honeywell website, it is up to the customer to determine the suitability of the product in the application

Specifications may change at any time without notice. The information we supply is believed to be accurate and reliable as of this printing. However, we assume no responsibility for its use.

### PRELIMINARY

### SALES AND SERVICE

Honeywell serves its customers through a worldwide network of sales offices and distributors. For application assistance, current specifications, pricing or name of the nearest Authorized Distributor, contact a nearby sales office or call:

1-800-537-6945 USA  
 +44 (0) 161 251 4079 UK  
 +33 (0) 4 76 41 7200 France  
 +49 (0) 69 8064 444 Germany  
 1-800-737-3360 Canada  
 1-815-235-6847 International

### FAX

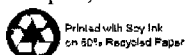
1-815-235-6545 USA

### INTERNET

[www.honeywell.com/sensing](http://www.honeywell.com/sensing)  
[info@micro.honeywell.com](mailto:info@micro.honeywell.com)

# Honeywell

Sensing and Control  
 Honeywell Inc.  
 11 West Spring Street  
 Freeport, Illinois 61032



Printed with Soy Ink  
 on 50% Recycled Paper

[www.honeywell.com/sensing](http://www.honeywell.com/sensing)