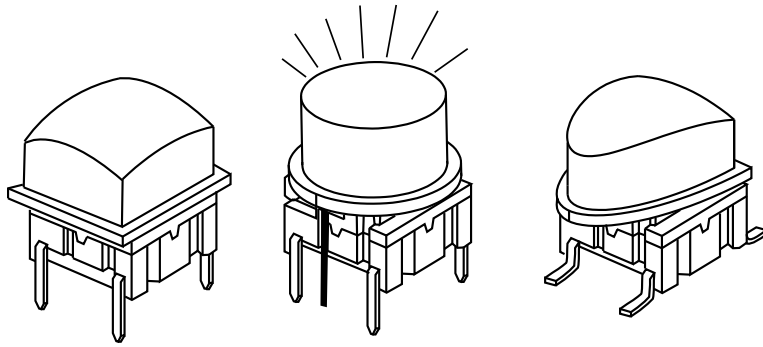


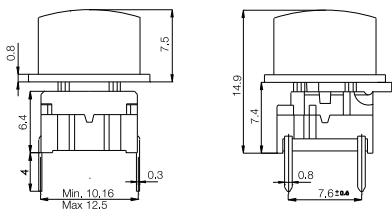
# multimec® 3F+1T/1U/1V



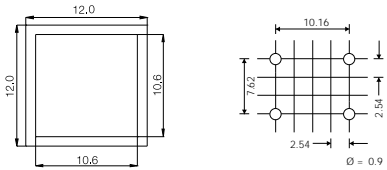
## Technical Data:

- through-hole or SMD
- 50mA/24VDC
- single pole/momentary
- 10.000.000 operations life time
- IP67 sealing
- temperature range:  
low temp: -40/+65°C  
high temp: -40/+160°C

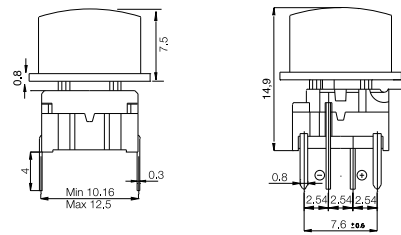
### Dimensions (through-hole)



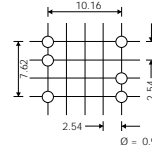
### PCB layout



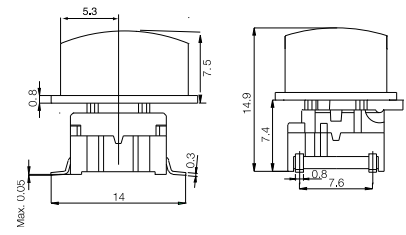
### Dimensions (w/LED)



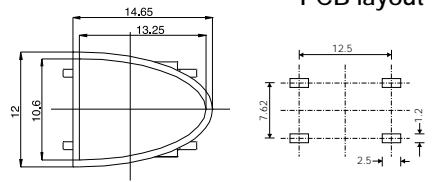
### PCB layout (top view)



### Dimensions (SMD)



### PCB layout



## HOW TO ORDER

<b>3 F</b>	<input type="checkbox"/>	<input type="checkbox"/>	+	<input type="checkbox"/>	<input type="checkbox"/>
Switch	Mounting	L 6 low temp. H 9 high temp.		Cap	00 blue 03 grey 08 red 09 black custom colours on request
	T through-hole S surface mount			1T	

### Standard versions:

3FTL6  
3FTH9  
3FSH9

<b>3 F</b>	<b>T</b>	<input type="checkbox"/>	<input type="checkbox"/>	+	<input type="checkbox"/>	<b>1 6</b>
Switch	Mounting	L 6 low temp. H 9 high temp.	LED	Cap	1T	transparent white
	T through-hole		22 green 44 yellow 88 red	1T		

### Standard versions:

3FTL622  
3FTL644  
3FTL688

Combinations of high temperature switches with LED's will be limited by the temperature capability of the LED.

Ordering example: 3 FTL644 + 1V16