

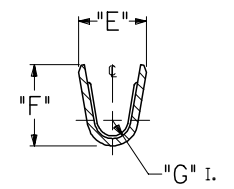
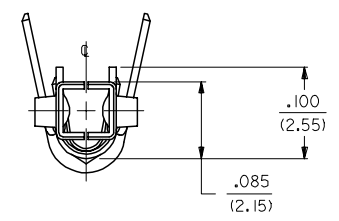
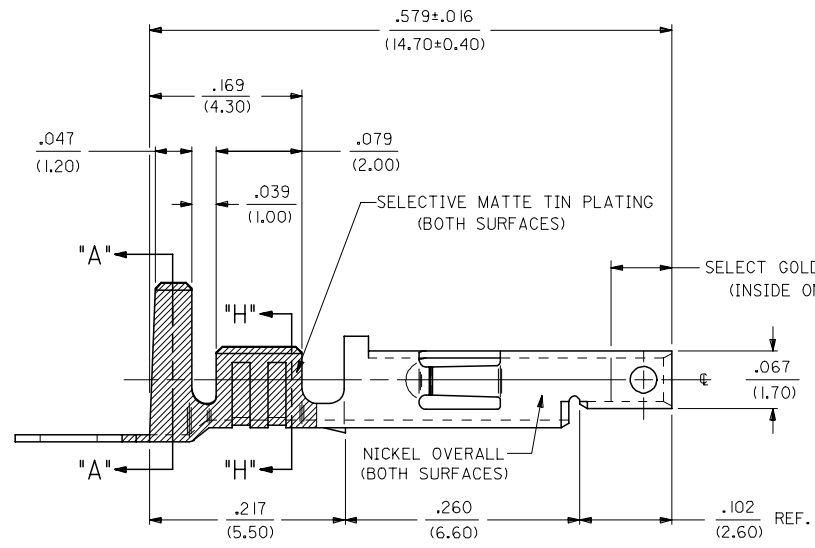
- NOTES:**
1. PART DESIGNED IN METRIC.
 2. TERMINAL FOR USE WITH 5557 SERIES HOUSINGS.
 3. MATES WITH 5558, 5566 AND 5569 SERIES CONNECTORS.
 4. REFER TO DWG. NO. CS-5556*/5558* FOR CRIMP SPECIFICATIONS.
 5. PRODUCT SPECIFICATION AND PROCESSING PARAMETERS SEE: PS-5556-001, PS-5556-002, PS-5556-003

MATERIAL:

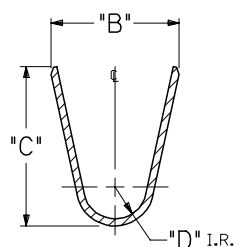
- A. CDA 260 BRASS, .0080±.0004/(0.203±0.010) THICK.
- B. CDA 510 PHOS. BRONZE .0080±.0004/(0.203±0.010) THICK.

PLATING:

- *A. SELECTIVE GOLD PLATE .000030/(0.00076) MIN., AND SELECTIVE MATTE TIN .000100/(0.00254) OVER .000050/(0.00127) NICKEL OVERALL.
- *B. SELECTIVE GOLD PLATE .000015/(0.00038) MIN., AND SELECTIVE MATTE TIN .000100/(0.00254) OVER .000050/(0.00127) NICKEL OVERALL.
- *C. SELECTIVE GOLD PLATE .000050/(0.00127) MIN., AND SELECTIVE MATTE TIN .000100/(0.00254) OVER .000050/(0.00127) NICKEL OVERALL.
- *THE PRIMARY SHIPPING CARTON WILL BE LABELED "COMPLIANT TO RoHS DIRECTIVE 2002/95/EC AND ELV ANNEX II OF DIRECTIVE 2000/53/EC." CARTONS WITHOUT THIS LABEL MAY CONTAIN PRODUCT WITH TIN-LEAD PLATING.



SECT. "H-H"

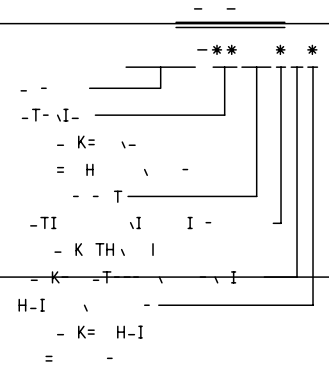


SECT. "A-A"

REMOVE 28-30 GAGE EC NO: UCP2006-1559 DRAWNDONE 2006/01/11 CHKD: GPOLGAR 2006/01/12 APPR: ICOMERCI 2006/01/16	QUALITY SYMBOLS =0 =0 R.	GENERAL TOLERANCES (UNLESS SPECIFIED)		DIMENSION STYLE IN/MM		SCALE 10:1	DESIGN UNITS METRIC	THIRD ANGLE PROJECTION			
		4 PLACES ± --- ± ---	4 PLACES ± --- ± ---	DRAWN BY GEP	DATE 5/17/90	TITLE TERMINAL, MINI-FIT JR., FEMAE CRIMP, SELECT GOLD BLANK PLATE FORM					
		3 PLACES ± --- ± .010	3 PLACES ± --- ± .010	CHECKED BY RJF	DATE 5/17/90	MATERIAL NO.					
		2 PLACES ± 0.25 ± .014	2 PLACES ± 0.25 ± .014	APPROVED BY RAS	DATE 5/17/90	DOCUMENT NO.					
1 PLACE ± 0.36 ± ---	1 PLACE ± 0.36 ± ---	ANGULAR ±1/2°		SEE SHT. 2		SD-5556-GSP*		SHEET NO. 1 OF 2			
DRAFT WHERE APPLICABLE MUST REMAIN WITHIN DIMENSIONS				THIS DRAWING CONTAINS INFORMATION THAT IS PROPRIETARY TO MOLEX INCORPORATED AND SHOULD NOT BE USED WITHOUT WRITTEN PERMISSION							

2	F1
1	F1
SHT.	REV.

PART NO.	QTY.	WIRE GAGE	QUANTITY PER REEL	DIM. "B"	DIM. "C"	DIM. "D"	DIM. "E"	DIM. "F"	DIM. "G"
5-1	5	18 GA.	4,000	±	±	.035	±	±	
5-2	5	22 GA.	6,000	±	±		±	±	
5-3	5	18 GA.	4,000	±	±	.035	±	±	
5-4	5	22 GA.	6,000	±	±		±	±	
5-5	5	18 GA.	4,000	±	±		±	±	
5-6	5	22 GA.	6,000	±	±		±	±	
5-7	5	18 GA.	4,000	±	±		±	±	
5-8	5	22 GA.	6,000	±	±		±	±	
5-9	5	18 GA.	4,000	±	±		±	±	
5-10	5	22 GA.	6,000	±	±		±	±	
5-11	5	18 GA.	4,000	±	±		±	±	
5-12	5	22 GA.	6,000	±	±		±	±	
5-13	5	18 GA.	4,000	±	±		±	±	
5-14	5	22 GA.	6,000	±	±		±	±	
5-15	5	18 GA.	4,000	±	±		±	±	
5-16	5	22 GA.	6,000	±	±		±	±	
5-17	5	18 GA.	4,000	±	±		±	±	
5-18	5	22 GA.	6,000	±	±		±	±	
5-19	5	18 GA.	4,000	±	±		±	±	
5-20	5	22 GA.	6,000	±	±		±	±	
5-21	5	18 GA.	4,000	±	±		±	±	
5-22	5	22 GA.	6,000	±	±		±	±	
5-23	5	18 GA.	4,000	±	±		±	±	
5-24	5	22 GA.	6,000	±	±		±	±	
5-25	5	18 GA.	4,000	±	±		±	±	
5-26	5	22 GA.	6,000	±	±		±	±	
5-27	5	18 GA.	4,000	±	±		±	±	
5-28	5	22 GA.	6,000	±	±		±	±	
5-29	5	18 GA.	4,000	±	±		±	±	
5-30	5	22 GA.	6,000	±	±		±	±	



SEE SHEET A FC NO: UCP2006-1559 DRAWNDUNNE CHKD: GPOLGAR APPR: ICOMERCJ 2006/01/11 2006/01/12 2006/01/16	QUALITY SYMBOLS ▽=0 ▽=0	GENERAL TOLERANCES (UNLESS SPECIFIED) mm INCH 4 PLACES ±--- ±--- 3 PLACES ±--- ±--- 2 PLACES ±--- ±--- 1 PLACE ±--- ±--- ANGULAR ±1/2°	DIMENSION STYLE IN/MM DRAWN BY DATE GEP 5/17/90 CHECKED BY DATE RJF 5/17/90 APPROVED BY DATE RAS 5/17/90	SCALE --- DESIGN UNITS METRIC THIRD ANGLE PROJECTION	TITLE TERMINAL, MINI-FIT JR., FEMALE, CRIMP, SELECT GOLD BLANK-PLATE-FORM MOLEX INCORPORATED	MATERIAL NO. SD-5556-GSP*	DOCUMENT NO. 2 2	SHEET NO. 2 2
		DRAFT WHERE APPLICABLE MUST REMAIN WITHIN DIMENSIONS	SEE CHART	THIS DRAWING CONTAINS INFORMATION THAT IS PROPRIETARY TO MOLEX INCORPORATED AND SHOULD NOT BE USED WITHOUT WRITTEN PERMISSION				