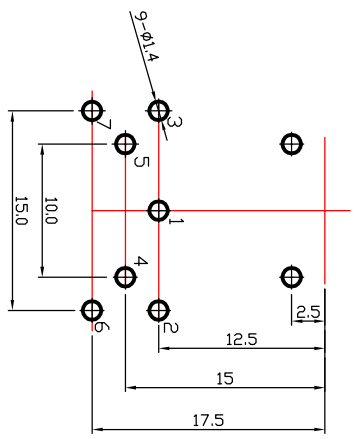
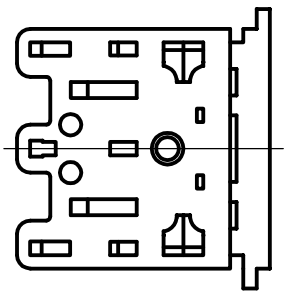


**SPECIFICATIONS**

1. CURRENT RATING :AC:100V 1A  
DC: 12V 2A
2. CONTACT RESISTANCE : 100M Ω OHM MAX  
(AFTER 1,000 CYCLES INSERTION/EXTRACTION)
3. DIELECTRIC WITHSTANDING VOLTAGE: 500V AC FOR 1 MINUTE
4. INSULATION RESISTANCE: 100M Ω OHM MIN AT 500V DC  
APPLIED FOR 1 MINUTE
5. INSERTION FORCE: 3KG MAX
6. EXTRACTION FORCE: 2.0~3.0KG



4	Terminal	0.7T Brass	7	Silver Plating
3	Earth Terminal	0.2T Phosphor Bronze	1	Silver Plating
2	Cover	PBT+30%G	1	Black Color
1	Housing	PBT+30%G	1	Black Color
NO	DESIGNATION	MATERIAL	Q'TY	Finish
REV	PART NO. & SAMPLE NO.	DATE	BY	
A	JR 2711-7P			
B				

**TOLERANCE**

0 - 10	±0.05
10 - 99	±0.5
100 - 999	±10.0
1000 - 9999	±100.00
10000 - 99999	±1000.00

**SIGNATURES**

DRAFT: ZHOU XIN GUO

CHECKED:

DATE: 10.02.26

**SHEET** OF

SCALE: 1:1

UNIT: mm

REV: ∅

今入企业股份有限公司  
JIN RUH CO., LTD

TITLE: Din Jack(7P)

CUSTOMER: