

ELCO EUROPE (A DIVISION OF AVX LTD.) CONFIDENTIAL PROPRIETARY
 THE DRAWING ON THIS PRINT AND INFORMATION THEREWITH ARE
 PROPRIETARY TO ELCO EUROPE (A DIVISION OF AVX LTD.) AND
 SHALL NOT BE USED OR DISCUSSED IN WHOLE OR IN PART
 WITHOUT ELCO EUROPE'S WRITTEN CONSENT.

20-9157-015-000-006

PREFIX _____

SERIES _____

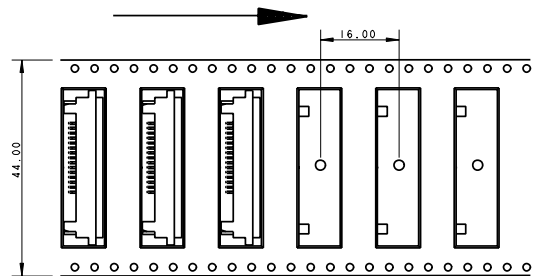
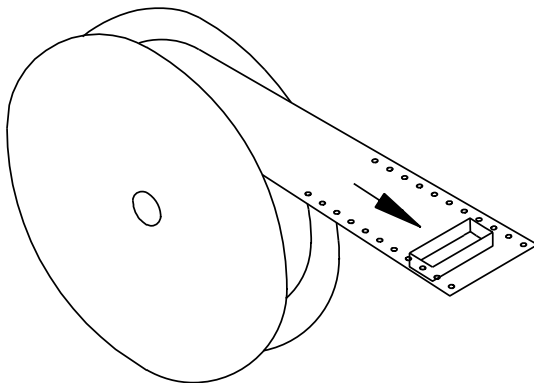
NO. OF WAYS _____

COAX _____

CODE	DESCRIPTION
000	NO COAX
001	WITH COAX

PLATING VARIATION _____

CODE	DESCRIPTION
006	LEAD FREE PLATING

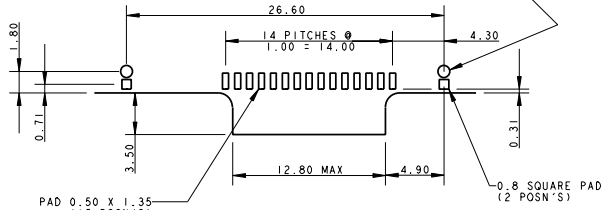
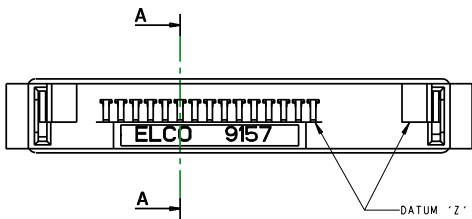
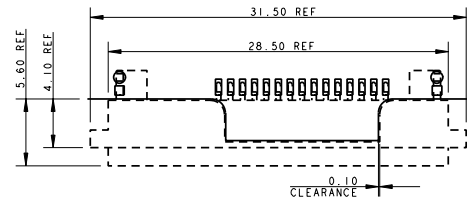
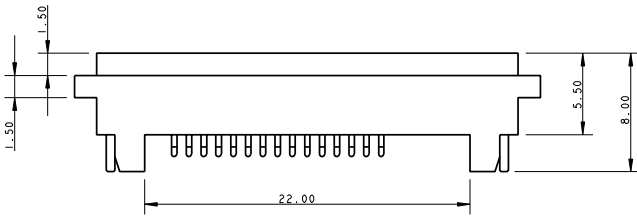
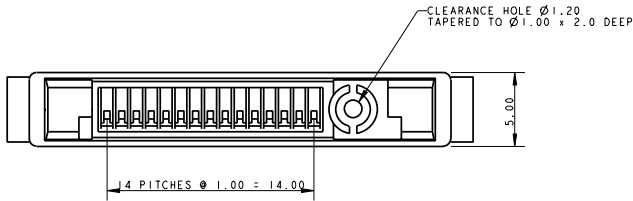
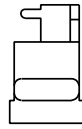
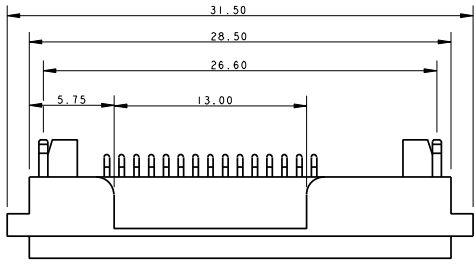


PACKING IN TAPE AND REEL
QUANTITY 600 PER REEL

9157 SOCKET WITHOUT COAX

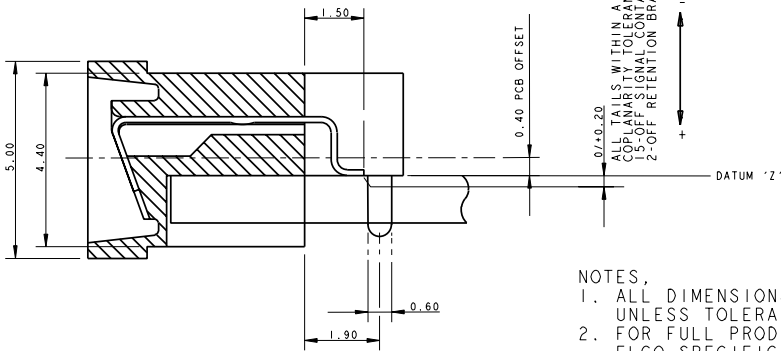


ELCO EUROPE (A DIVISION OF AVX LTD.) CONFIDENTIAL PROPRIETARY THE DRAWING ON THIS PRINT AND INFORMATION THEREWITH ARE PROPRIETARY TO ELCO EUROPE (A DIVISION OF AVX LTD.) AND SHALL NOT BE USED OR DISCUSSED IN WHOLE OR IN PART WITHOUT ELCO EUROPE'S WRITTEN CONSENT.



RECOMENDED PCB LAYOUT

ALL TALLS WITHIN A 0.10 COPLANARITY TOLERANCE COMPLIARITY TOLERANCE APPLIES TO : 15-OFF SIGNAL CONTACTS 2-OFF RETENTION BRACKETS.

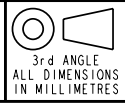


SECTION A-A

- NOTES.
1. ALL DIMENSIONS SHOWN ARE REFERENCE DIMENSIONS UNLESS TOLERANCED.
 2. FOR FULL PRODUCT INFORMATION REFER TO ELCO SPECIFICATION 201-01-079

FORM-106-01-056-6 ISS 7

Release No.	History
100909	102009
102009	102068
102068	102211



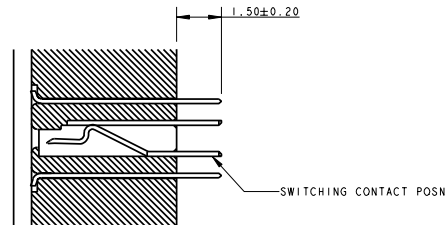
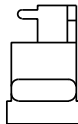
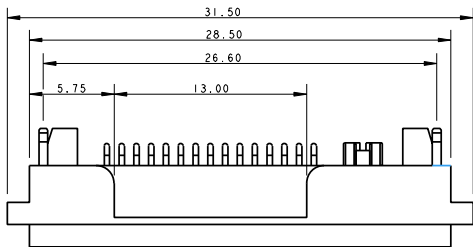
Drawn	JN
Size	BV

Description	9157 SOCKETS - ORDERING CODE
Part Number	20-9157-015-01S

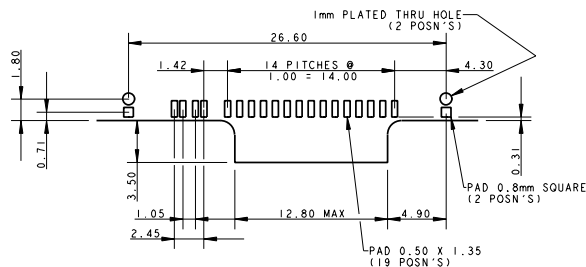
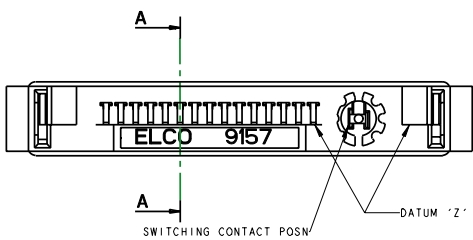
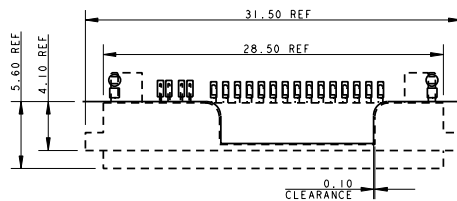
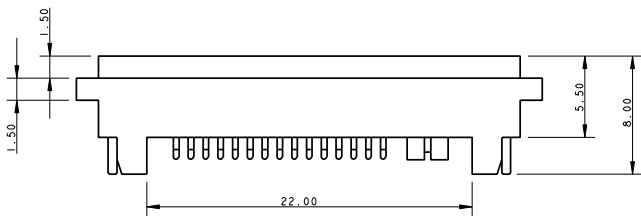
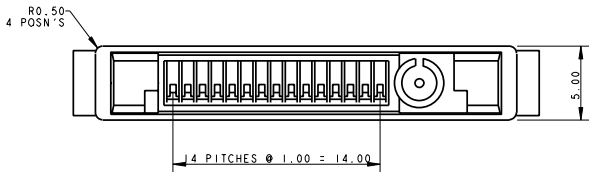
DATE	02-Feb-05
Issue	6

9157 SOCKET WITH COAX

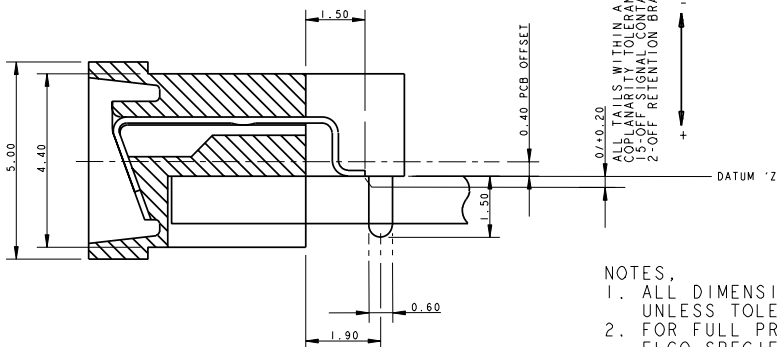
ELCO EUROPE (A DIVISION OF AVX LTD.) CONFIDENTIAL PROPRIETARY
 THE DRAWING ON THIS PRINT AND INFORMATION THEREWITH ARE
 PROPRIETARY TO ELCO EUROPE (A DIVISION OF AVX LTD.) AND
 SHALL NOT BE USED OR DISCUSSED IN WHOLE OR IN PART
 WITHOUT ELCO EUROPE'S WRITTEN CONSENT.



SECTION ON SWITCHING COAX



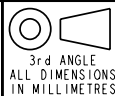
RECOMENDED PCB LAYOUT



SECTION A-A

- NOTES
1. ALL DIMENSIONS SHOWN ARE REFERENCE DIMENSIONS UNLESS TOLERANCED.
 2. FOR FULL PRODUCT INFORMATION REFER TO ELCO SPECIFICATION 201-01-079

Release No.	History
100909	102009
102009	102068
102068	102211



ELCO
 © COPYRIGHT ELCO EUROPE
 NOT TO BE DISCLOSED OR COPIED
 WITHOUT WRITTEN PERMISSION

Drawn
JN
 Size
BV

Description
9157 SOCKETS - ORDERING CODE
 Part Number
20-9157-015-01S

DATE
02-Feb-05
 Issue
6