

Sealed Illuminated Rocker Switches

Attractive and Rugged for Wet & Dusty Environments

K3
Sealed
Rockers

Quality Features:

- Sealed watertight per IP68.
- Snap-in panel mounting into industry standard 1.73" x .87" panel cutout.
- Optional panel seal gasket.
- Thru-panel drain option.
- LED, neon and incandescent lighting.
- Front panel re-lampable incandescent.
- .250" Q.C. terminals.
- Optional one-piece connector.
- Optional terminal barriers.
- Low level to 20 amp switch.



The OTTO K3 series is a quality, precision switch designed to comply with standards established for appliance, marine (ignition protection) and off-road vehicles along with other demanding applications where rugged rocker switches are required.

K3 series sealed rocker switches snap into industry-standard panel cutouts. The K3 can be re-lamped from the front of the panel without affecting the IP68 watertight rating. Choose illuminated and printed legends, thru-panel drain option, and switching compatibility from low level to 20 amps.

The K3 series offers a choice of LED, incandescent and neon illumination. Legends can be stamped onto a non-illuminated button, stamped onto an illuminated lens, or laser etched into the lens and backlit.

Available in standard and low level contact ratings, the K3 rockers will fit a wide range of applications. Expect a minimum of 25,000 cycles at a full rated load of 20 amps resistive or 15 amps inductive. 100,000 cycles are possible at low level loads. A full complement of switch operation is available including momentary and maintained action in 2- or 3-position switches in SPST, SPDT, SPTT, DPST, and DPDT circuit arrangements.

OTTO can provide custom colors upon request. Value-added assemblies with wire leads are also available. Please consult the factory for assistance.

Standard Characteristics/Ratings:

OPERATIONAL:

Mechanical Life: 100,000 cycles, minimum

Seal: Watertight to IP68 per IEC529

Operating Temperature Range: -40°C to +85°C

Case/Bezel: Thermoplastic. Choice of red, black, or white

Actuator: Thermoplastic. Choice of red, black or white

Mounting: Snap-In from front into industry standard 1.73" X .87" panel cutout

Panel Push Out Force: 45 lbs.

Contacts: Silver Alloy. Gold flash for low level

Terminals: Brass 1/4" Q.C. Standard

Light Source: 6V, 12V, 24V Incandescent; 125V, 250V Neon; 2V, 6V, 12V, 24V red, green, amber LED

ELECTRICAL:

Load Type	Current Rating		Life (Min.)
	12V & 28V	110VAC	
Resistive	20A	16A	25,000 cycles
Inductive	15A	15A	25,000 cycles
Lamp	5A	5A	25,000 cycles

Motor Load: 1/2 HP at 110 VAC

Dielectric Withstand: 1050 Vr ms

Compliance Standards (Pending):

EN61508-1 for appliance switches

UL 1054 for special use switches

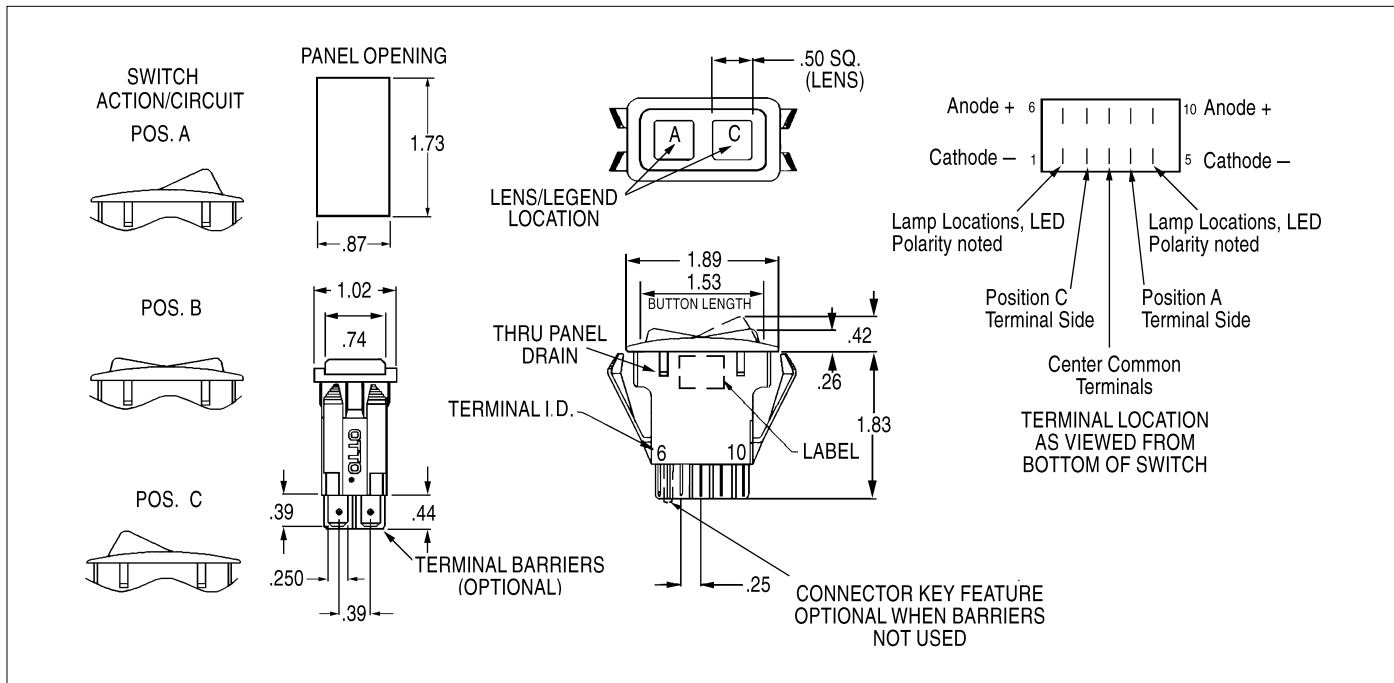
UL 1500 for ignition protection of marine products

SAE J1455 for heavy duty trucks

K3 Sealed Rockers

Sealed Illuminated Rocker Switches

Snap-In Panel Mounting, Front Panel Re-lamping



K 3 Series PART

K 3 X X X X X X

Terminal Style/ Switch Rating	Bezel and Actuator Color and Case Style	Code	Switch Action/Circuit Position "A"	Position "B"	Position "C"	Circuit	Light Source Type	Light Circuit
A. Without Terminal Barriers/ Standard rating	A. Black Rocker and Bezel with Drain Holes	1A	ON	NONE	OFF	SPST	A. No Illumination	A. No Light
B. Without Terminal Barriers & Connector Keying Pin/ Standard rating	B. Black Rocker and Bezel without Drain Holes	1B	ON	NONE	ON	SPDT	B. 6V Incandescent	B. Dep. in "A"
C. With Terminal Barriers/ Standard rating	C. Red Rocker and Bezel with Drain Holes	1C	MOM-ON	NONE	OFF	SPST	C. 12V Incandescent	C. Dep. in "C"
D. Without Terminal Barriers/ Low Level rating	D. Red Rocker and Bezel without Drain Holes	1D	MOM-ON	NONE	ON	SPDT	D. 24V Incandescent	D. Ind. in "A"
E. Without Terminal Barriers & Connector Keying Pin/ Low Level rating	E. White Rocker and Bezel with Drain Holes	1E	MOM-ON	OFF	MOM-ON	SPDT	E. 125 VAC Neon	E. Ind. in "C"
F. With Terminal Barriers/ Low Level rating	F. White Rocker and Bezel without Drain Holes	1F	ON	OFF	ON	SPDT	F. 250 VAC Neon	F. Dep. in "A" & "C"
		2A	ON	NONE	OFF	DPST	G. 2V Red LED	G. Dep. in "A" & Ind. in "C"
		2B	ON	NONE	ON	DPDT	H. 2V Green LED	H. Ind. in "A" & Dep. in "C"
		2C	MOM-ON	OFF	ON	SPDT	J. 2V Amber LED	J. Ind. in "A" & "C"
		2D	MOM-ON	OFF	MOM-ON	DPDT	K. 6V Red LED	
		2E	MOM-ON	OFF	ON	SPDT	L. 6V Green LED	
		2F	ON	OFF	ON	DPDT	M. 6V Amber LED	
		1G	MOM-ON	OFF	ON	SPDT	N. 12V Red LED	
		2G	MOM-ON	OFF	ON	DPDT	P. 12V Green LED	
		1H	ON	ON	OFF	SPDT	Q. 12V Amber LED	
		1J	ON	ON	NONE	SPDT	R. 24V Red LED	
		2J	ON	ON	NONE	DPDT	S. 24V Green LED	
		1K	MOM-ON	ON	OFF	SPDT	T. 24V Amber LED	
		1L	MOM-ON	ON	NONE	SPDT	U. 6V Re-lampable Incandescent*	
		2L	MOM-ON	ON	NONE	DPDT	V. 12V Re-lampable Incandescent*	
		1M	ON	ON	ON	SPTT	W. 24V Re-lampable Incandescent*	
		1N	MOM-ON	ON	ON	SPTT		
		1P	MOM-ON	ON	MOM-ON	SPTT		
		2R	ON/ON	OFF/ON	OFF/OFF	DPDT		
		2S	MOM-ON/ON	OFF/ON	OFF/OFF	DPDT		

Note: Connector Keying Pin is standard without terminal barriers

* Consult Factory for availability

Stop Here for unlighted switches without legends. The switch you have specified will be supplied with rocker button without lenses and without legends. Example: K3AA2EAA.

Sealed Illuminated Rocker Switches

K3

Sealed
Rockers

Attractive and Rugged for Wet & Dusty Environments

Part Numbering Example:
K3DB1ENJ-21T1T2994

Switch Description

K3 rocker switch
for low level switching, without terminal barriers,
featuring a black rocker and bezel without drain holes
in a SPDT, Mom On – Off – Mom On circuit arrangement
with 12VDC red LEDs
lit independently in both positions

K3
D
B
1E
N
J
-
2
1
T1
T2
9
9
4

Switch Description

Green lens in Position A and a Red lens in Position C are respectively pad-printed with Rabbit and Turtle legends, both in white, with the legends rotated 270° so that the switch can be mounted in the panel vertically with the Rabbit at the top of the switch.

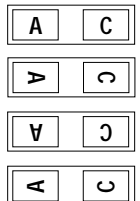
NUMBERING CODE

-	X	X	
	Lens Color	Lens Color	
	Pos. "A"	Pos. "C"	
0.	No Lens	0.	No Lens
1.	Red	1.	Red
2.	Green	2.	Green
3.	Amber*	3.	Amber*
4.	Clear*	4.	Clear*
5.	No Lens/ Backlit	5.	No Lens/ Backlit
	Legend		Legend
9.	White	9.	White

* Use with neon lamps.

XX	XX
Legend Style	Legend Style
Pos. "A"	Pos. "C"
Refer to Legend Table for Legend Codes.	

X	X	X	
Legend Color	Legend Color	Legend Rotation	
Pos. "A"	Pos. "C"		
1.	Red	1.	Standard
2.	Black	2.	90°
9.	White	3.	180°
B.	Backlit/ Daylight White	4.	270°
D.	Backlit/ Deadfront		
Z.	No Legend		



Stop Here for lighted switches without legends. The switch you have specified will be supplied with rocker button with lenses, but without legends.
Example: K3AA1DNIH-41

Connector: Part Number 801775-2A without latches.
Part Number 801775-2B with latches.
Panel Seal Gasket: Part Number 807037.
Order separately for use with switches without drain holes.

Standard Legends Per SAE Specifications

A1	 Anchor	K2	 Unlock	P5	 Bilge Blower
B1	 Battery	L1	 Light	R1	 Lift
B2	 Electric Power	L2	 Master Lighting Switch	R2	 Lower
C1	 AC/Cooling Systems	L3	 Headlights	R3	 Up
C2	 Dehumidifier	L4	 Headlights-Low / Dipped Beam	R4	 Down
C3	 Heater/Interior Heating	L5	 Headlights-High / Upper Beam	R5	 Right
D1	 Windshield Defroster	L6	 Parking Light	R6	 Left
D2	 Rear Window Defroster	L7	 Work Light	R7	FWD Forward
D3	 Mirror Defroster	L8	 Work Lamp	R8	REV Reverse
E1	 Engine/Start	L9	 Interior Dome Light	S1	 Radio
E2	 Engine/Stop	M1	 Beacon	S2	 Mute
E3	On/Start	M2	 Hazard / Position Lights	T1	 Fast
E4	○ Off/Stop	M3	 Clearance Lights	T2	 Slow
E5	ON On	M4	 Side Marker Light	T3	 Trim Tab Trimming Operation
E6	OFF Off	M5	 Running Lights (under power)	T4	 Transmission
E7	 Engine Electric Preheat	M6	 Anchor Light	V1	 Ventilating / AC Fan
E8	 Engine-Gas Injection	M7	 Running/Anchor Lights	W1	 Windshield Wiper
F1	 Front Fog Lights	M8	 Search Light	W2	 Windshield-Washer
F2	 Rear Fog Lights	M9	 Turn Signals	W3	 Windshield-Washer/Wiper
G1	 Fuel	P1	 Bilge Pump #1	W4	 Rear Window Wiper
H1	 Horn	P2	 Bilge Pump #2	W5	 Rear Window Washer
H2	 Horn Rear	P3	 Bilge Pump #3	W6	 Rear Window-Washer/Wiper
K1	 Lock	P4	 Bilge Pump	ZZ	No Legend

For legends not shown, please consult an OTTO representative.