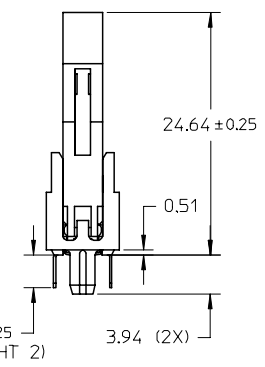


- NOTES:
- CARD SLOT ACCEPTS 1.27±0.10 MM MODULE THICKNESS. (MEASURED OVER P.C. PADS).
P.C. BOARD THICKNESS 1.57 MM +0.18/-0.13
 - ALL PEGS ARE INTERFERENCE FITS TO PCB UNLESS NOTED ON THE DWG.
 - REFER TO THE PRODUCT SPEC. PS-87630-004 FOR PERFORMANCE SPECIFICATIONS.
 - RECOMMENDED MODULE LAYOUT SHALL BE PER MO-161.
 - RECOMMENDED PLATING ON MODULE PADS: 0.76 μ M MIN HARD GOLD (Au) OVER 2.0 μ M MIN NICKEL (Ni).
 - PRODUCT WILL HAVE DATE CODE STAMPED ON SIDE OF HOUSING.
 - VOLTAGE VALUE MARKED ACCORDING TO ITS RELATIVE KEY POSITION.
 - MATERIALS:
HOUSING - LCP, GLASS FILLED, UL 94V-0, COLOR: BLACK
TERMINAL - PHOSPHOR BRONZE
LATCHES - HIGH TEMP NYLON, GLASS FILLED, UL 94V-0, COLOR: BEIGE
 - PLATING:
CONTACT AREA , GOLD(Au) : THICKNESS = 15 μ INCH/(0.38μ M)
SOLDERTAILS : TIN (Sn) (SEE PART NUMBER TABLE)
THICKNESS = 75μ INCH/(1.91μ M)
UNDERPLATE : 50 μ INCH/1.27μ M MIN NICKEL (Ni).



OBS TIN/LEAD P/N EC NO: S2006-0734 DRWN:MLONG CHKD:IHO APPR:GJLEE	2006/02/27	DESCRIPTION
	2006/02/28	
	2006/03/01	
	REV	

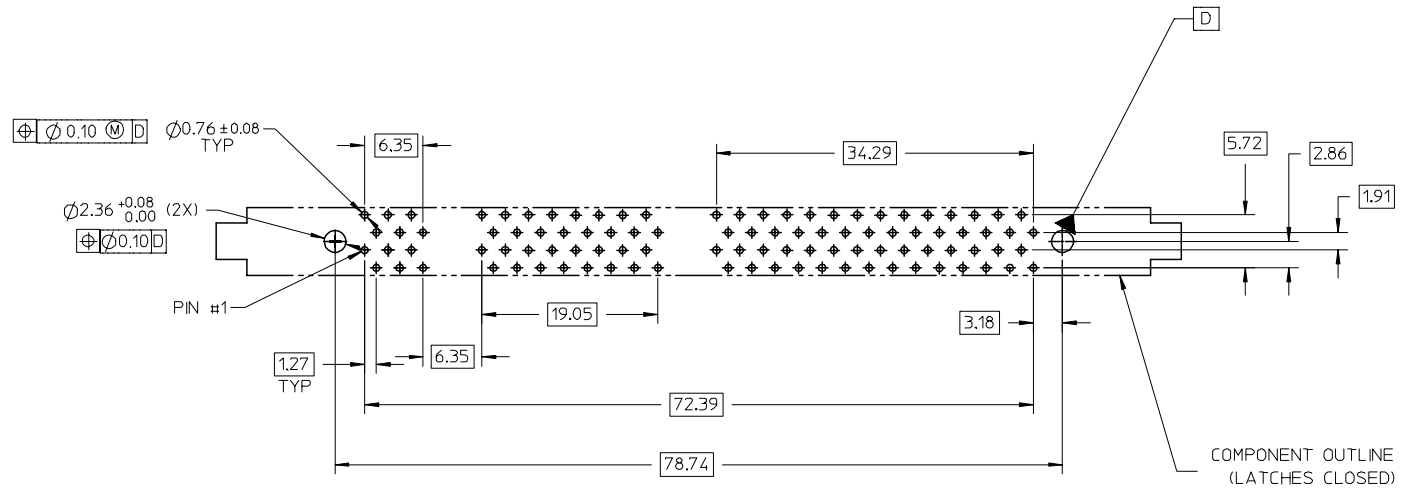
QUALITY SYMBOLS	▽=0
	▽C=0

GENERAL TOLERANCES (UNLESS SPECIFIED)	
	mm INCH
4 PLACES	± --- ± ---
3 PLACES	± --- ± ---
2 PLACES	± 0.15 ± ---
1 PLACE	± --- ± ---
ANGULAR ± 1 °	
DRAFT WHERE APPLICABLE MUST REMAIN WITHIN DIMENSIONS	

DIMENSION STYLE MM ONLY	
DRAWN BY	DATE
CLCHUA	2000/04/12
CHECKED BY	DATE
SQUEK	2000/04/20
APPROVED BY	DATE
SKTOH	2000/04/20
MATERIAL NO.	
SEE TABLE	
SIZE	
A3	

SCALE	DESIGN UNITS	THIRD ANGLE PROJECTION	
NTS	METRIC		
TITLE		DIMM, 1.27MM PITCH 100 CKTS, MULTI KEY	
MOLEX INCORPORATED		DOCUMENT NO.	SHEET NO.
		SD-87630-001	1 OF 3
THIS DRAWING CONTAINS INFORMATION THAT IS PROPRIETARY TO MOLEX INCORPORATED AND SHOULD NOT BE USED WITHOUT WRITTEN PERMISSION			

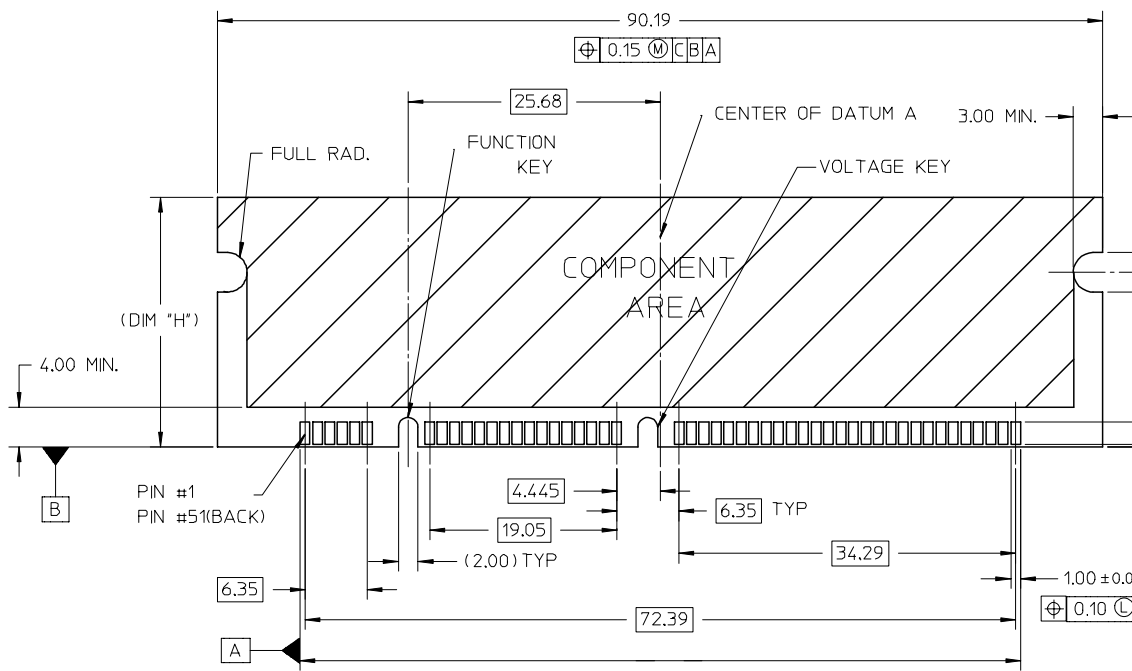
PART NUMBER	PACKAGING TYPE	FUNCTION KEY	VOLTAGE KEY	(DIM'H)	DIM 'T'
87630-1001	TRAY	OFFSET RIGHT	CENTER (3.3V)	(25.40)	3.23
87630-0005			RIGHT (2.5V)	(30.50)	
87630-1011	TUBE		CENTER (3.3V)	(25.40)	
87630-1012			RIGHT (2.5V)	(30.50)	



RECOMMENDED P.CBOARD HOLE PATTERN
(CONNECTOR SIDE)

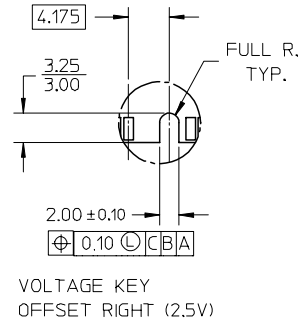
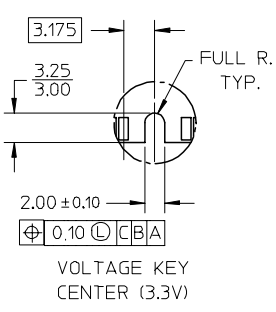
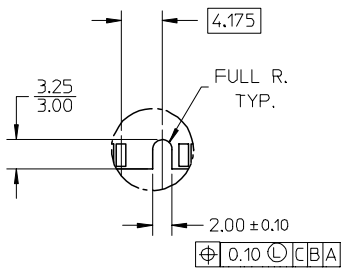
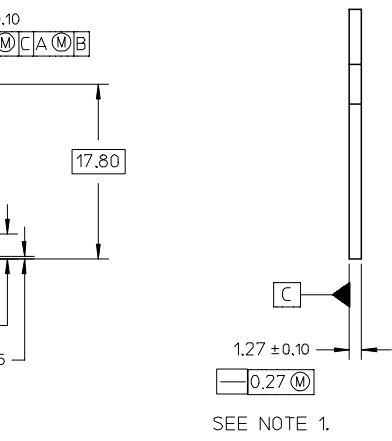
OBS TIN/LEAD P/N EC NO: S2006-0734 DRMNMILONG CHKD: IHD APPR: GGLEE REV D	DESCRIPTION 2006/02/27 2006/02/28 2006/03/01	QUALITY SYMBOLS ▽=0 ▽=0	GENERAL TOLERANCES (UNLESS SPECIFIED)		DIMENSION STYLE MM ONLY		SCALE NTS	DESIGN UNITS METRIC	THIRD ANGLE PROJECTION	
			mm	INCH	DRAWN BY CL CHUA	DATE 2000/04/12	TITLE DIMM, 1.27MM PITCH 100 CKTS, MULTI KEY			
			4 PLACES ± ---	± ---	CHECKED BY SQUEK	DATE 2000/04/20				
			3 PLACES ± ---	± ---	APPROVED BY SKTOH	DATE 2000/04/20	MATERIAL NO. SKT0H			
1 PLACE ± ---		± ---	ANGULAR ± 1 °		DOCUMENT NO. SD-87630-001					
DRAFT WHERE APPLICABLE MUST REMAIN WITHIN DIMENSIONS				SEE TABLE		MATERIAL NO. SKT0H			SHEET NO. 2 OF 3	

10 9 8 7 6 5 4 3 2 1



NOTES:
 1. STRAIGHTNESS OF MODULE APPLIES TO THE AREA FROM THE BOTTOM OF THE CARD UP 4.00 MM.
 2. IF TIE BARS ARE ATTACHED TO PADS, THE TIE BAR SHOULD BE ON THE INTERNAL LAYER, SO THAT THE REMNANT CANNOT CAUSE DAMAGE TO THE CONTACTS.

(OUTSIDE EDGE OF END PADS) RECOMMENDED MODULE LAYOUT
 100 CKT 3.3V UNBUFFERED



FUNCTION KEY (OFFSET RIGHT)

OBS TIN/LEAD P/N EC NO: S2006-0734 DRWN:MLONG CHKD:HQ APPR:GJLEE	2006/02/27	DESCRIPTION
	2006/02/28	
	2006/03/01	
D	REV	

QUALITY SYMBOLS	$\nabla = 0$
	$\triangle = 0$

GENERAL TOLERANCES (UNLESS SPECIFIED)	mm	INCH
	4 PLACES ± ---	± ---
	3 PLACES ± ---	± ---
	2 PLACES ± 0.15	± ---
	1 PLACE ± ---	± ---
	ANGULAR ± 1 °	
DRAFT WHERE APPLICABLE MUST REMAIN WITHIN DIMENSIONS		

DIMENSION STYLE MM ONLY	
DRAWN BY CLCHUA	DATE 2000/04/12
CHECKED BY SQUEK	DATE 2000/04/20
APPROVED BY SKTOH	DATE 2000/04/20
MATERIAL NO.	DOCUMENT NO. SD-87630-001
SIZE A3	THIS DRAWING CONTAINS INFORMATION THAT IS PROPRIETARY TO MOLEX INCORPORATED AND SHOULD NOT BE USED WITHOUT WRITTEN PERMISSION

SCALE NTS	DESIGN UNITS METRIC	THIRD ANGLE PROJECTION
TITLE DIMM, 1.27MM PITCH 100 CKTS, MULTI KEY		
MOLEX MOLEX INCORPORATED		
SHEET NO. 3 OF 3		

9 8 7 6 5 4 3 2 1