

# TPS62260LED-338

Three-Color LED Driver Evaluation Module (EVM)

[www.ti.com/led](http://www.ti.com/led)

## User's Guide



Literature Number: SLVU240A  
May 2008—Revised October 2008



|   |           |
|---|-----------|
| <b>Preface</b> .....  | <b>5</b>  |
| <b>1 Introduction</b> .....                                       | <b>7</b>  |
| 1.1 Requirements .....  | 7         |
| 1.1.1 Power Supply Requirements .....                             | 7         |
| 1.1.2 Printed Circuit Board Assemblies (PCBs) .....               | 7         |
| <b>2 Setup</b> .....  | <b>9</b>  |
| 2.1 Input/Output Connector Descriptions .....                     | 9         |
| 2.1.1 J1, J2, and J3 – Power Supply Connectors .....              | 9         |
| 2.1.2 JP1 – Wireless Interface Connector .....                    | 9         |
| 2.1.3 JP2 – JTAG Interface Connector .....                        | 9         |
| 2.2 Hardware Setup .....  | 10        |
| <b>3 Supported Colors and Operation Modes</b> .....               | <b>11</b> |
| 3.1 Color Range .....   | 11        |
| 3.2 Auto-Scroll Mode .....  | 11        |
| 3.3 Manual Control Mode .....                                     | 11        |
| <b>4 Design Description</b> .....                                 | <b>13</b> |
| 4.1 Hardware Design .....   | 13        |
| 4.1.1 LED Power Stages .....                                      | 13        |
| 4.1.2 Output Filter Design.....                                   | 14        |
| 4.1.3 MODE and EN Pins .....                                      | 14        |
| 4.1.4 MSP430 Design .....   | 14        |
| 4.2 LED Color Table.....  | 15        |
| 4.3 Firmware Design .....   | 15        |
| 4.3.1 Firmware C-Code Listing.....                                | 18        |
| <b>5 Schematic and Bill of Materials</b> .....                    | <b>21</b> |
| 5.1 Schematics.....   | 21        |
| 5.2 Bill of Materials .....                                       | 23        |
| <b>6 Board Layout</b> .....                                       | <b>25</b> |
| 6.1 Photographs of Top and Bottom .....                           | 25        |
| 6.2 Layout.....   | 26        |
| 6.3 Thermal Images .....  | 28        |
| <b>A Reprogramming</b> .....                                      | <b>29</b> |
| A.1 Additional Software/Hardware Needed.....                      | 29        |
| A.2 IAR Embedded Workbench KickStart Software Installation .....  | 29        |
| A.3 Hardware Installation .....                                   | 29        |
| A.4 Using IAR Embedded Workbench to Download Code on MSP430 ..... | 30        |
| <b>Important Notices</b> .....                                    | <b>31</b> |

---

## List of Figures

|     |                                |    |
|-----|--------------------------------|----|
| 3-1 | CIE Chromaticity Diagram ..... | 12 |
| 6-1 | HPA338 Top View.....           | 25 |
| 6-2 | HPA338 Bottom View.....        | 26 |
| 6-3 | PCB Top Assembly Layer.....    | 26 |
| 6-4 | PCB Layer One.....             | 27 |
| 6-5 | PCB Layer Two.....             | 27 |
| 6-6 | EVM Without Heatsink.....      | 28 |
| 6-7 | EVM With Heatsink .....        | 28 |

## List of Tables

|     |                         |    |
|-----|-------------------------|----|
| 5-1 | Bill of Materials ..... | 23 |
|-----|-------------------------|----|

## Read This First

---

---

---

### About This Manual

This user's guide describes the characteristics, setup, and use of the TPS62260LED-338 three-color light-emitting diode (LED) driver evaluation module (EVM). This EVM contains three TPS62260 2.25-MHz, 600-mA step-down voltage converters and an MSP430F2131. Each TPS62260 applies power to one of the three high brightness LEDs (red, green, or blue). The MSP430F2131 controls the output current of the three converters individually.

### How to Use This Manual

This document contains the following sections:

- Chapter 1 – Introduction
- Chapter 2 – Setup
- Chapter 3 – Supported Colors and Operation Modes
- Chapter 4 – Design Description
- Chapter 5 – Schematic and Bill of Materials
- Chapter 6 – Board Layout
- Appendix A – Reprogramming

Read through [Chapter 2](#) before connecting the board for the first time to a power supply.

### Information About Cautions and Warnings

This user's guide may contain cautions and warnings.

#### **CAUTION**

This is an example of a caution statement.

A caution statement describes a situation that could potentially damage your software or equipment.

#### **WARNING**

**This is an example of a warning statement.**

**A warning statement describes a situation that could potentially cause harm to you.**

The information in a caution or a warning is provided for your protection. Please read each caution and warning carefully.

**Related Documentation From Texas Instruments**

|                                |           |
|--------------------------------|-----------|
| TPS62260 Data sheet            | (SLVS763) |
| MSP430x2xx Family User's Guide | (SLAU144) |
| MSP430F2131 Data sheet         | (SLAS439) |
| MSP430F2131 Errata             | (SLAZ020) |

**If You Need Assistance**

Please contact your local TI sales representative.

## Introduction

---

---

---

This TPS62260LED-338 EVM enables the user to individually control the brightness of three high-brightness LEDs. By adjusting the relative brightness of each of the three LEDs, the user is able to generate a wide range of colors across the spectrum.

The desired output color can be adjusted by means of a rotary encoder. Alternatively, the board can be left in its default power-up state, in which it continuously cycles through the whole range of colors.

For more details on the operation of the board, refer to [Chapter 3](#).

### 1.1 Requirements

To operate this EVM, it has to be supplied with a voltage between 3.6 V and 6 V. The current capability of the power supply should be 1 A or higher. The EVM kit contains everything necessary to operate the EVM except the DC power supply.

Reprogramming of the MSP430F2131 microcontroller can be done by connecting an MSP430 JTAG interface board (e.g., MSP-FET430UIF). This MSP430 development tool is not included in the TPS62260LED-338 EVM.

#### 1.1.1 Power Supply Requirements

A regulated DC power supply capable of delivering 3.6 V to 6 V at 1 A is required to power the EVM.

#### CAUTION

Use of a poorly regulated AC adapter may generate overvoltage conditions exceeding the absolute maximum ratings of some of the components used. It is recommended that only well-regulated ( $5\text{ V} \pm 0.5\text{ V}$ ) adapters be used with this EVM.

#### CAUTION

AC adapters with long cables (approx. 1 m) can exhibit significant stray capacitance that may interact with the EVM's input capacitance, causing ringing when hot plugged. To avoid such potentially damaging overvoltage conditions, first plug the adapter's DC plug into J3, then connect the AC adapter to the mains.

#### 1.1.2 Printed Circuit Board Assemblies (PCBs)

The EVM comprises a single PCB featuring four connectors, with one of them designed to accommodate an optional low-power wireless interface. The wireless interface connection is not part of this EVM. For more details, please refer to [Section 2.1.2](#).





---

---

This chapter explains the function of the connectors on the PCB as well as how to properly connect, set up, and use the TPS62260LED-338 EVM.

## 2.1 Input/Output Connector Descriptions

### 2.1.1 J1, J2, and J3 – Power Supply Connectors

J1 and J2 are two-pin headers for easy connection of a lab power supply. Connect a positive input voltage between 3.6 V and 6 V to J1 and 0 V (ground) to J2. The lab power supply current limit has to be set to at least 1 A.

J3 can be connected with a 5-mm × 2.5-mm barrel connector of the type commonly used with low-cost AC adapters. The inner contact is positive (5 V) relative to the outer contact (GND). Possible wall adapters could be Egston P2CFSW3–5 V/1.2 A, 5.0 VDC, 1.2 A with universal connector set (please ensure the orientation of the connector is correct) or SL Power Electronics PW170KA05V/2A with the right country connector.

### 2.1.2 JP1 – Wireless Interface Connector

The JP1 is a pin header that can be used for plug-on of the RF board from the eZ430-RF2500 kit, which is separately available. With this additional module, the lamp's colors can be controlled remotely via the wireless RF interface.

---

**Note:** The firmware included in the standard EVM does not currently support wireless modules. Users who wish to use wireless are required to write their own (simple) routines. Different software libraries support the realization of star-networks or point-to-point wireless connections using MSP430 microcontrollers. These libraries include SimpliciTi (star network) or MSP430/CC2500 code library (point-to-point connection).

---

**Note:** When the wireless module is connected to the standard EVM, the power requirement increases. To support this higher power requirement please change resistor R11 to a 0805 68-Ω resistor.

---

### 2.1.3 JP2 – JTAG Interface Connector

The JTAG connector JP2 is used as the programming interface for the MSP430F2131 microcontroller. Please note that only MSP430 JTAG programming adaptors – like the MSP-FET430UIF – can be used for the program download. This tool also allows debugging of a new MSP430 software.

The connector on the TPS62260LED-338 EVM uses standard pinning also used on the different MSP430 JTAG tools. This means that the cable delivered with MSP-FET430UIF can be plugged into the TPS62260LED-338 EVM's JP2 connector.

---

**Note:** Programming and debugging with the MSP430 JTAG interface tools works only if the TPS62260LED-338 EVM is supplied by a 5-V power supply.

---

The MSP430 JTAG programming adaptor is not part of this package but can be ordered via the Texas Instruments web page: [www.ti.com](http://www.ti.com). For instructions to set up the programming adaptor and update the program already installed on the MSP430F2131, please see [Appendix A](#).

## 2.2 Hardware Setup

### **WARNING**

**Turning on the power supply lights the high-brightness LEDs on the board, starting with blue and cycling automatically through the color range.**

**Protective eyewear is recommended!**

To set up the hardware:

- Plug the DC connector of the AC adapter into J3 or connect a lab power supply set to 3.6 V to 6 V between J1 and J2.
- Plug the mains connector of the AC adapter into the mains supply.
- Turn on the mains supply.

### **CAUTION**

Use of a poorly regulated AC adapter may generate overvoltage conditions exceeding the absolute maximum ratings of some of the components used. It is recommended that only well-regulated ( $5\text{ V} \pm 0.5\text{ V}$ ) adapters be used with this EVM.

### **CAUTION**

AC adapters with long cables (approx. 1 m) can exhibit significant stray capacitance that may interact with the EVM's input capacitance, causing ringing when hot plugged. To avoid such potentially damaging overvoltage conditions, first plug the adapter's DC plug into J3, then connect the AC adapter to the mains.

## Supported Colors and Operation Modes

---

---

---

This chapter explains the two control modes of the TPS62260LED-338 EVM. If the LEDs are controlled in a different way, specialized software can be downloaded via the JTAG connector JP2 to the MSP430F2131. For the download process, please refer to [Appendix A](#).

### 3.1 Color Range

The TPS62260LED-338 EVM with the default software does not support the entire range of colors described by the CIE chromaticity diagram, but instead supports a reduced subset. This approach greatly reduces the design effort while simultaneously providing a range of possible colors spanning the spectrum. [Figure 3-1](#) shows the CIE chromaticity diagram representing the range of possible colors; the inner triangle represents the reduced range of colors supported by the EVM with the default software.

When the EVM scrolls through its range of colors, it effectively traces the edges of the inner triangle shown in [Figure 3-1](#). As can be seen from this triangle, when tracing the edges clockwise this color transitions from blue to green, through yellow and orange to red, and then from red through purple back to blue.

### 3.2 Auto-Scroll Mode

The EVM powers up in auto-scroll mode starting with blue. In auto-scroll mode the MSP430 autonomously cycles clockwise through the range of supported colors ad infinitum.

After switching to manual control mode by using the rotary encoder, auto-scroll mode can be entered by powering up the board again.

### 3.3 Manual Control Mode

The EVM leaves auto-scroll mode and enters manual control mode the first time the rotary control is activated. In manual control mode, the color balance of the three LEDs is adjusted by the user turning the rotary encoder S1. The faster the encoder is turned, the faster the colors transition from one to another; the direction of rotation determines whether the EVM traces the color triangle in [Figure 3-1](#) clockwise or counterclockwise.

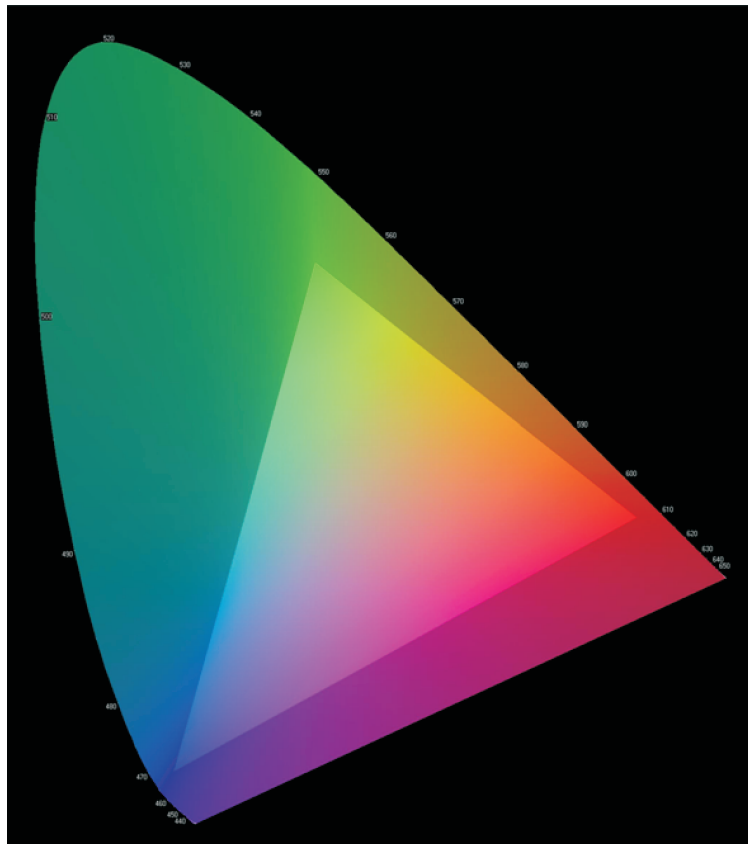


Figure 3-1. CIE Chromaticity Diagram

## Design Description

This chapter describes the design steps used to build the hardware and firmware for the TPS62260LED-338 EVM. This chapter includes the board description and the detailed instructions used in the firmware program loaded by default onto the MSP430F2131.

### 4.1 Hardware Design

The schematics and bill of materials referred to in the following design description are contained in [Chapter 5](#). The design contains three identical LED driver stages; only one (the red channel) is described.

#### 4.1.1 LED Power Stages

Since the brightness of an LED is determined by the current flowing through it, not the voltage across it, LEDs tend to be powered by current sources in all the simplest of applications (i.e., when uniform intensity and color balance are not important). In this application, each power stage uses a TPS62260 DC/DC converter configured as a controllable current source. Instead of using a resistor divider between the output and GND to generate the feedback voltage, a small current-sensing resistor is inserted between the LED's cathode and GND. In this configuration, the TPS62260 controls its duty cycle at whatever value is needed to regulate the voltage across the current-sensing resistor to 0.6V (the IC's internal reference voltage). Using a 2- $\Omega$  current-sensing resistor, the LED current is therefore regulated to a value given by:

Equation 1

$$I_{LED} = \frac{V_{FB}}{R_{SNS}} = \frac{0.6\text{ V}}{2\ \Omega} = 300\text{ mA}$$

Brightness is varied by pulse width modulating the current flowing through each LED. This approach has two main advantages compared with using analog methods to control LED current.

First, the color balance of an LED changes with the current flowing through it, so not only is the brightness of an LED at 10 mA different than at 100 mA, its color is, too. With pulse width modulation (PWM) dimming, the current flowing through the LED when it is active is always the same so its color does not change. As long as the dimming frequency is high enough, the only effect the human eye sees is a variation in LED intensity. In this application, a nominal dimming frequency of 122 Hz is used.

Second, it is simpler and cheaper to generate three PWM signals using a microcontroller than three analog voltages, which would require a 3-channel DAC.

The PWM dimming scheme works as follows:

- When the NET\_DIMM\_LED1 signal is low, D1 blocks any current flow away from the FB pin and U2 regulates LED current to its full-scale value of 300 mA (see [Equation 1](#)).
- When NET\_DIMM\_LED1 is high (close to U2's 3.3-V supply voltage) U2's FB pin is held at 1.35 V, which forces U2's duty cycle and consequently the LED current to zero (see [Equation 2](#)).

**Equation 2**

$$V_{FB} = V_{R9} + (V_{CC} - V_{D1} - V_{R9}) \times \left( \frac{R_7}{R_7 + R_5} \right)$$

$$V_{FB} = V_{R9} + (3.3 \text{ V} - 0.6 \text{ V} - V_{R9}) \times \left( \frac{10 \text{ k}\Omega}{10 \text{ k}\Omega + 10 \text{ k}\Omega} \right)$$

$$V_{FB} = V_{R9} + \frac{2.7 \text{ V}}{2} - \frac{V_{R9}}{2}$$

$$V_{FB} = \frac{V_{R9}}{2} + 1.35 \text{ V}$$

The average current flowing through the LED and its brightness are simply the products of the full-scale (FS) LED current multiplied by the duty cycle of the dimming signal (NET\_DIMM\_LED1):

**Equation 3**

$$I_{LED(AVG)} = I_{LED(FS)} \times D_{NET\_DIMM\_LED1}$$

$$I_{LED(AVG)} = 300 \text{ mA} \times D_{NET\_DIMM\_LED1}$$

#### 4.1.2 Output Filter Design

The TPS62260 data sheet states that the part is optimized for use with an output filter comprising a 2.2- $\mu$ H inductor and a 10- $\mu$ F capacitor. In this application, the standard inductor value was used. However, because output voltage ripple is uncritical (at 2.5 MHz the human eye detects no worsening of performance) a smaller capacitor value of 4.7  $\mu$ F was used to reduce cost.

#### 4.1.3 MODE and EN Pins

The TPS62260 features a power-save mode to improve efficiency at low output powers, but it is not needed in this application. By connecting U2's MODE pin to VIN, this feature is disabled and the device operates permanently in PWM mode.

All three LED driver circuits are connected to a common enable signal (NET\_EN) that allows the MSP430 to completely enable and disable the power stages if necessary. Note that a pulldown resistor is used for the TPS62260 enable signal. This pulldown resistor causes all LEDs to switch off after the EVM's supply voltage is applied. The MSP430 activates the LEDs and avoid flashing LEDs during startup.

#### 4.1.4 MSP430 Design

The MSP430 is powered via a simple (and inexpensive) 3.3-V zener diode linear regulator. Resistor R11 sets D5's bias current to approximately 5 mA, which is significantly more than the current drawn by the MSP430. This maintains good regulation in the face of changing load currents. Since the input supply to the board is regulated to 5 V, the Zener regulator circuit experiences almost no input voltage variation.

The rotary encoder S1 allows manual control of the lamp's color interfaces to the MSP430 using two digital input pins. When rotated, this type of encoder generates two pulse trains 90 degrees out of phase. The number of turns can be determined by counting the number of pulses generated, the direction of rotation can be determined by comparing the relative phase of the two signals, and the speed of rotation can be determined by measuring the frequency of the pulses. This can be easily achieved using one of the MSP430's built-in timers.

R4 holds the three LED power stages in a disabled state until the MSP430 has powered up and is ready to assume control. R1 and C1 provide a power-up reset for the MSP430. JP2 provides a JTAG interface to allow easy debugging and JP1 provides the connections to the optional low-power wireless interface.

## 4.2 LED Color Table

To obtain the correct optical response from the LEDs, their relative brightness (i.e., the current flowing through them) is not varied linearly, but is varied according to a lookup table derived from the CIE chromaticity diagram. This lookup table is stored in the MSP430's flash memory and defines the edges of the inner triangle shown in [Figure 3-1](#), which the EVM traces. The standard EVM lookup table contains 252 locations, each of which contains the correct value for the red, green, and blue LED PWM signals.

## 4.3 Firmware Design

This section details the function of the default software loaded onto the MSP430F2131. Because the color scheme is set via integer values given in three LED color arrays, no software change is needed for changing the color scheme. Changing the values in the LEDx[ ] arrays changes the colors.

```
#include "msp430x21x1.h"
```

All peripheral Control Registers and Control Bits of the MSP430F2131 are defined in the header file msp430x21x1.h

```
#define LED_TabLength 252*4
```

Here the length of the arrays LED1[ ], LED2[ ], and LED3[ ] is defined. It is used to detect the overflow of the LEDptr. Care should be taken that all three arrays LED1[ ], LED2[ ], and LED3[ ] have the length that is defined here.

```
const unsigned int LED1[]={65385,65385,65385, ...,65385,65385}; //blue LED
const unsigned int LED2[]={ 150, 295, 622, ..., 150, 150}; //green LED
const unsigned int LED3[]={ 150, 150, 150, ..., 311, 150}; //red LED
```

The three arrays are used for the PWM duty cycle adjustment. For each LED (red, green, and blue) there is an own array. But there is only one pointer (LEDptr) that is used to find the PWM settings for each of the arrays. The values of the array should be within the range 100 to 65535.

```
unsigned int LEDptr;
```

This is the variable used as the pointer for the three arrays LED1[ ], LED2[ ], and LED3[ ].

```
unsigned char BAold;
```

This variable is used for the detection of a change of the incremental encoder.

```
void main(void)
{ unsigned int i,temp;
  WDTCTL=WDTPW+WDTHOLD; // disable Watchdog
  The Watchdog is not used in this program. So it is disabled.
  BCSCTL1= CALBC1_8MHZ; //--- System Clock Settings -----
  DCOCTL = CALDCO_8MHZ; // use calibrated 8MHz settings
```

The Watchdog is not used in this program. By setting the control bit WDTHOLD in control register WDTCTL the Watchdog is disabled.

```
BCSCTL1= CALBC1_8MHZ; //--- System Clock Settings -----
DCOCTL = CALDCO_8MHZ; // use calibrated 8MHz settings
```

There are calibration values available in the MSP430's Flash memory. These two commands move the calibration value for 8-MHz DCO output frequency into the clock system control registers.

```
//---- PWM Timer Initialization -----
TACTL = TASSEL_2+ID_0+MC_0+TACLRL+TAIE; // Timer clock = SMCLK = 8MHz
TACCTL0 = CM_0+CCIS_2+OUTMOD_1; // All Output Units will set PWM outputs if
TACCTL1 = CM_0+CCIS_2+OUTMOD_1; // TACCRx=TAR. Resetting PWM outputs is done
TACCTL2 = CM_0+CCIS_2+OUTMOD_1; // by software.
```

The Timer\_A module is initialized here. It uses the calibrated 8-MHz DCO clock signal. A timer overflow generates an interrupt. The three capture and compare blocks CCR0, CCR1, and CCR2 are used in compare mode. The output unit of each CCR block is used to generate a PWM signal. The output units are automatically setting the PWM output, while the resetting of the output signal is done by software as soon as a timer overflow (Timer\_A interrupt) happens.

```
LEDptr=0;
TACCR0=LED1[LEDptr>>2]; // LEDptr is shifted right twice,
TACCR1=LED2[LEDptr>>2]; // this means divided by 4
TACCR2=LED3[LEDptr>>2];
```

LEDptr is cleared. This means the first values of the arrays LED1[], LED2[], and LED3[] are used at the beginning. When LEDptr is used for the array, it is divided by 4 (shifting LEDptr two times right is the same as divided by 4). This is done to avoid issues with the bouncing of the incremental encoder.

```
//--- Port Initialization -----
P1SEL = 0x0E; // P1.1, P1.2, P1.3 are used as PWM Timer Outputs
P1OUT = 0x00; // P1.0 is output (Enable for TPS62260)
P1DIR = 0xFF; // P1.4, P1.5, P1.6, P1.7 are not used => digital outputs
P2OUT = 0x04; // P2.0 and P2.1 are not used => digital outputs
P2DIR|= 0xE4; // P2.3, P2.4 are digital inputs => incremental encoder
// P2.5, P2.6, P2.7 are not used => digital outputs
```

Initialization of the digital I/Os. P1.1, P1.2, and P1.3 are used as Timer\_A PWM output (module function). All pins that are not used are defined as digital outputs.

```
BAold=0x01; //--- initialize decoder for incremental encoder -----
```

Initialization of the variable used for incremental encoder detection.

```
Delay(); // Delay loop
TACTL |= MC_2; // start Timer_A (continuous mode)
```

After a short delay loop the Timer\_A is started. The Timer\_A is used in continuous mode, this means it counts from 0 to 65535. If the counter is 65535 and the timer gets another clock the counter value is set to 0 and an overflow interrupt is generated.

```
__enable_interrupt(); // enables maskable interrupts
```

All maskable interrupts are enabled. Now the interrupt service routines are called if there is an interrupt event.

```
temp=P2IN&0x18;
//--- Main Loops -----
while ((P2IN&0x18)==temp) //--- change settings automatically till
```

This is the first operating mode of the application. It stays in this loop as long as pins P2.3 and P2.4 do not change (this means as long as the incremental encoder S1 was not used).

```
{ Delay(); // incremental encoder is operated
LEDptr=LEDptr+1;
if (LEDptr>=LED_TabLength)
LEDptr=0;
}
```

The first operating mode of the application automatically changes the LEDptr. This is done by using a simple delay loop and afterwards the LEDptr is incremented. After incrementing the LEDptr it is checked if the maximum table length is reached. If this is the case the LEDptr is reset.

```
while(1) //--- change settings manually (incremental encoder)
{ Inc_Decoder(0x03&(P2IN>>3)); // check incremental decoder
for(i=0;i<=1000;i++); // delay loop (used for debouncing)
}
```

When the incremental encoder S1 is turned, this loop is executed. This is an entire loop. Here the incremental encoder is checked. Afterwards, there is a short delay loop that is used for debouncing of the incremental encoder.



```

}
//-----
// Delay Loop
void Delay(void)
{ unsigned int i,j;
  for(i=0;i<=10000;i++) // delay loop
  for(j=0;j<=3;j++);
}

```

This is the delay loop that is mainly used for the automatic mode. It defines the time the single settings of the arrays are used before the next one is moved to the Timer\_A control registers.

```

//-----
// Incremental Encoder Subroutine:
void Inc_Decoder(unsigned char BAnew)
{
  if (BAnew==0x02)
  { if (BAold==0x00)
    { LEDptr=LEDptr-1; // decrement pointer if new state is 'b' and
      if (LEDptr>=LED_TabLength) // old state was 'a'
      LEDptr=LED_TabLength;
    }
  }
  if (BAnew==0x00)
  { if (BAold==0x02)
    { LEDptr=LEDptr+1; // increment pointer if new state is 'a' and
      if (LEDptr>=LED_TabLength) // old state was 'b'
      LEDptr=0;
    }
  }
  BAold=BAnew; // store new state
}

```

The incremental encoder generates a gray code. From the four different states the program is testing for only two states. The two states are P2.3='0', P2.4='0' and P2.3='1', P2.4='0'. Incrementing/decrementing of LEDptr is only done if the state that was read during the previous execution of the Inc\_Decoder() function (this was stored in BAold) is different.

```

//-----
// Timer_A Interrupt Service Routine:
#pragma vector=TIMER1_VECTOR
__interrupt void ISR_TimerA(void)
{ P1OUT |= 0x01; // activate LEDs
}

```

This is the Timer\_A interrupt service routine. It is called as soon as there is a Timer\_A overflow. The first instruction is setting the P1.0 pin. This enables the DC/DC converters.

```

//--- update PWM duty cycle settings using color table
TACCR0=LED1[LEDptr>>2]; // LEDptr is shifted right twice,
TACCR1=LED2[LEDptr>>2]; // this means divided by 4
TACCR2=LED3[LEDptr>>2];

```

The settings for the PWM duty cycles are read from the three LED arrays. This is done in the interrupt service routine to ensure that it is synchronized with the timer. If this would be done in the main loop, the LED would flicker in case of a change.

The PWM signal is generated from the Timer Capture and Compare Block, i.e., a digital comparator compares the Control Register (TACCRx) with the actual timer value. Are both values identical, the PWM output is set. The reset of the PWM output has to be done by software. This is done with an interrupt when there is a timer overflow and its Interrupt Service Routine updates the TACCRs register if necessary.

If this is done in the main loop, the update could happen asynchronous to the timer. Then it could happen that for one PWM cycle the PWM signal becomes inverted and the LED flickers.

```

//--- PWM signal generation
TACTL &= ~TAIFG;
TACCTL0 &= ~OUTMOD_7; // OUTMOD_0 => PWM output=L
TACCTL0 |= OUTMOD_1; // OUTMOD_1 => set PWM output TA0 as soon as TACCR0=TAR

```





```

while(1)                                //--- change settings manually (incremental encoder)
{ Inc_Decoder(0x03&(P2IN>>3));          // check incremental decoder
  for(i=0;i<=1000;i++);                // delay loop (used for debouncing)
}

//-----
// Delay Loop
void Delay(void)
{ unsigned int i,j;
  for(i=0;i<=10000;i++) // delay loop
    for(j=0;j<=3;j++);
}

//-----
// Incremental Encoder Subroutine:
void Inc_Decoder(unsigned char BAnew)
{
  if (BAnew==0x02)
  { if (BAold==0x00)
    { LEDptr=LEDptr-1; // decrement pointer if new state is 'b' and
      if (LEDptr>=LED_TabLength) // old state was 'a'
        LEDptr=LED_TabLength;
    }
  }
  if (BAnew==0x00)
  { if (BAold==0x02)
    { LEDptr=LEDptr+1; // increment pointer if new state is 'a' and
      if (LEDptr>=LED_TabLength) // old state was 'b'
        LEDptr=0;
    }
  }
  BAold=BAnew; // store new state
}

//-----
// Timer_A Interrupt Service Routine:
#pragma vector=TIMER1_VECTOR
__interrupt void ISR_TimerA(void)
{ P1OUT |= 0x01; // activate LEDs
  //--- update PWM duty cycle settings using colour table
  TACCR0=LED1[LEDptr>>2]; // LEDptr is shifted right twice,
  TACCR1=LED2[LEDptr>>2]; // this means divided by 4
  TACCR2=LED3[LEDptr>>2];

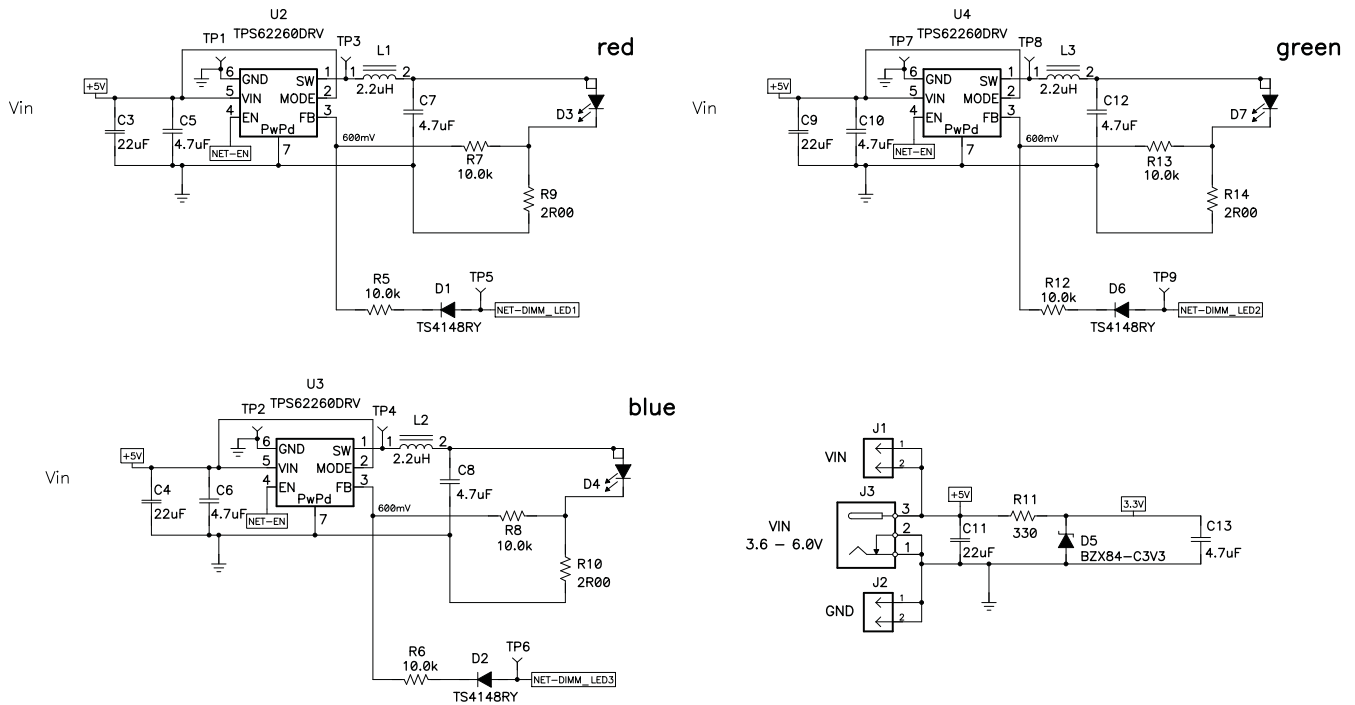
  //--- PWM signal generation
  TACTL &= ~TAIFG;
  TACCTL0 &= ~OUTMOD_7; // OUTMOD_0 => PWM output=L
  TACCTL0 |= OUTMOD_1; // OUTMOD_1 => set PWM output TA0 as soon as TACCR0=TAR
  TACCTL1 &= ~OUTMOD_7; // OUTMOD_0 => PWM output=L
  TACCTL1 |= OUTMOD_1; // OUTMOD_1 => set PWM output TA1 as soon as TACCR1=TAR
  TACCTL2 &= ~OUTMOD_7; // OUTMOD_0 => PWM output=L
  TACCTL2 |= OUTMOD_1; // OUTMOD_1 => set PWM output TA2 as soon as TACCR2=TAR
  // TAR = Timer_A counter
}

```

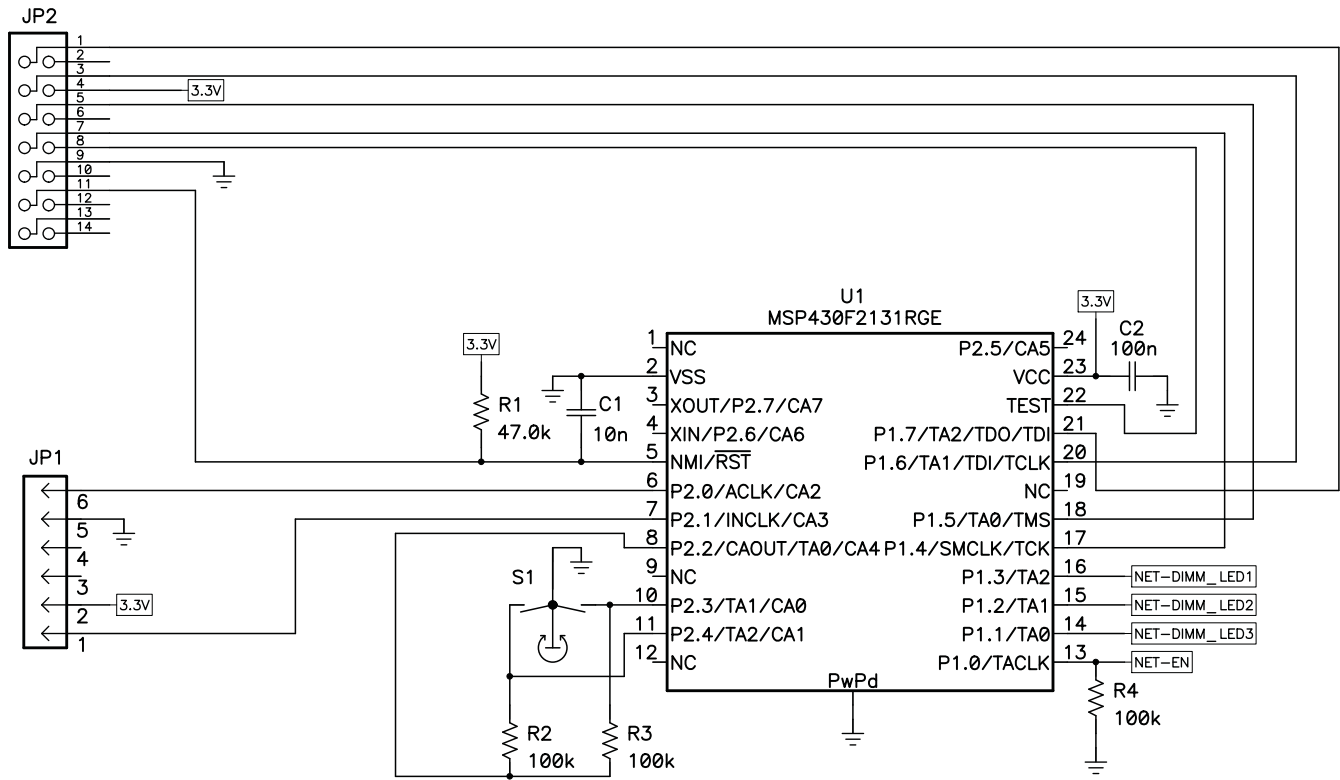
## Schematic and Bill of Materials

This chapter provides the TPS62260LED-338 schematics and bill of materials.

### 5.1 Schematics



R9, R10, R14    2 Ohm    => 300 mA  
R9, R10, R14    1.69 Ohm => 350 mA



## 5.2 Bill of Materials

**Table 5-1. Bill of Materials<sup>(1)(2)(3)</sup>**

| COUNT | RefDes <sup>(4)</sup>  | VALUE                   | DESCRIPTION  | SIZE                                 | PART NO.                     | MANUFACTURER         |
|-------|------------------------|-------------------------|--|--------------------------------------|------------------------------|----------------------|
| 1     | C1                     | 10nF                    | Capacitor, Ceramic, 50V, X5R, 20%  | 0603                                 | std                          | std                  |
| 1     | C2                     | 100nF                   | Capacitor, Ceramic, 50V, X5R, 20%  | 0603                                 | std                          | std                  |
| 4     | C3, C4, C9, C11        | 22uF                    | Capacitor, Ceramic, 16V, X5R, 20%  | 1210                                 | C1210C226M4PAC               | KEMET                |
| 7     | C5 - C8, C10, C12, C13 | 4.7uF                   | Capacitor, Ceramic, 6.3V, X5R, 20%   | 0603                                 | C0603C475M9PAC               | KEMET                |
| 3     | D1, D2, D6             | TS4148RY                | Diode, Hi-Speed, 150mA, 100V, 500mW  | 0805                                 | TS4148RY                     | Taiwan Semiconductor |
| 1     | D3                     | LR W5SM                 | Diode, LED Red, 500-mA   | 0.244 × 0.441 inch                   | LR W5SM-HYJY-1-0-400-R18-Z   | Osram                |
| 1     | D4                     | LB W5SM                 | Diode, LED Blue, 500-mA  | 0.244 × 0.441 inch                   | LB W5SM-EYGX-35-0-350-R18-Z  | Osram                |
| 1     | D5                     | BZX84-C3V3              | Diode, Zener, 3.3V, 250mW, 5%  | SOT23                                | BZX84-C3V3                   | NXP Semiconductor    |
| 1     | D7                     | LT W5SM                 | Diode, LED Green, 500-mA   | 0.244 × 0.441 inch                   | LT W5SM-HYJZ-25-0-350-R18-Z  | Osram                |
| 2     | J1, J2                 | PTC36SAAN               | Header, Male 2-pin, 100mil spacing, (36-pin strip)   | 0.100 inch × 2                       | PTC36SAAN                    | Sullins              |
| 1     | J3                     | RAPC 712                | Connector, Pin dia.2.5mm, DC Jack,   | 0.57 × 0.35 inch                     | RAPC 712                     | Switchcraft          |
| 1     | JP1                    | 850-106-10-S-RA         | Header, 1x6-pin, 50mil spacing   | 1.000 × 0.085 inch                   | 850-10-006-20-001000         | Millmax              |
| 1     | JP2                    | 2514-6002UB             | Connector, Male Straight 2x7 pin, 100mil spacing, 4 Wall                                       | 0.100 inch × 2X7                     | 2514-6002UB                  | 3M                   |
| 3     | L1, L2, L3             | 2.2uH                   | Inductor, SMT, 2.2uH, 1.1A, 110-milliohm or Alternate Inductor; SMT, 2.2uH, 1.0A, 120-milliohm | 2.5 × 2.0 mm<br>2.5 × 2.0 × 1.2mm    | MIPSA2520D2R2LQM2HPN2 R2MJ0L | FDKmuRata            |
| 1     | R1                     | 47.0k                   | Resistor, Chip, 1/16W, 1%  | 0603                                 | Std                          | Std                  |
| 1     | R11                    | 330                     | Resistor, Chip, 1/16W, 1%  | 0603                                 | Std                          | Std                  |
| 3     | R2, R3, R4             | 100k                    | Resistor, Chip, 1/16W, 1%  | 0603                                 | Std                          | Std                  |
| 6     | R5 - R8, R12, R13      | 10.0k                   | Resistor, Chip, 1/16W, 1%  | 0603                                 | Std                          | Std                  |
| 3     | R9, R10, R14           | 2.00                    | Resistor, Chip, 1/8W, 1%   | 1206                                 | Std                          | Std                  |
| 1     | S1                     | 3315C-001               | Encoder, Sealed Incremental, 9 mm Square   | 0.375 × 0.400 inch                   | 3315C-001                    | Bourns               |
| 9     | TP1 - TP9              | 5001                    | Test Point, Black, Thru Hole Color Keyed   | 0.100 × 0.100 inch                   | 5001                         | Keystone             |
| 1     | U1                     | MSP430F2131TRGE         | IC, Mixed Signal Microcontroller   | QFN-24                               | MSP430F2131TRGE              | TI                   |
| 3     | U2, U3, U4             | TPS62260DRV             | IC, 2.25MHz 600mA Step-Down Converter  | SON-6[DRV]                           | TPS62260DRV                  | TI                   |
| 1     | --                     |                         | PCB, 4.33 In x 2.4 In x 0.062 In   |                                      | HPA338 Rev. A                | Any                  |
| 1     | --                     | 020-2220 <sup>(5)</sup> | Knob, collet locking, black plastic  | 10mm overall dia.<br>1/8" shaft dia. | "020-2220 orequivalent"      | ELMA                 |
| 1     | --                     | 040-1020 <sup>(6)</sup> | Cap, black plastic   | 10mm overall dia.                    | 040-1020 or equivalent       | ELMA                 |

- (1) These assemblies are ESD sensitive; ESD precautions shall be observed.
- (2) These assemblies must be clean and free from flux and all contaminants. Use of clean flux is required.
- (3) These assemblies must comply with workmanship standards IPC-A-610 Class 2.
- (4) Reference designators marked with an asterisk (\*\*\*) cannot be substituted. All other components can be substituted with equivalent MFG's components.
- (5) Knob 020-2220 shall be installed onto S1 after final board assembly
- (6) Cap 040-1020 shall be installed onto Knob 020-2220





## Board Layout

This chapter provides the TPS62260LED-338 EVM board layout and illustrations.

### 6.1 Photographs of Top and Bottom

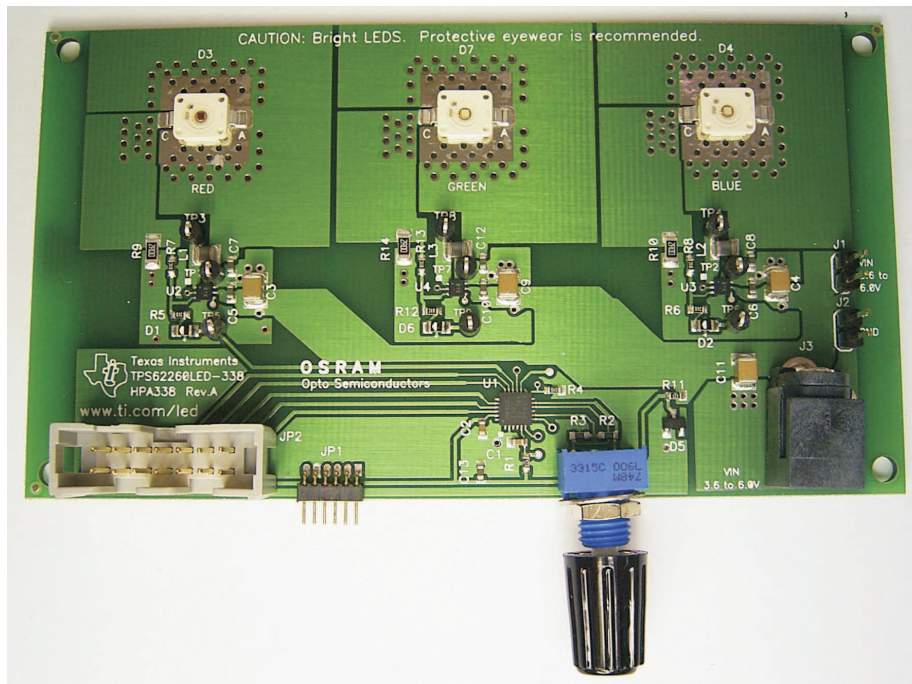


Figure 6-1. HPA338 Top View

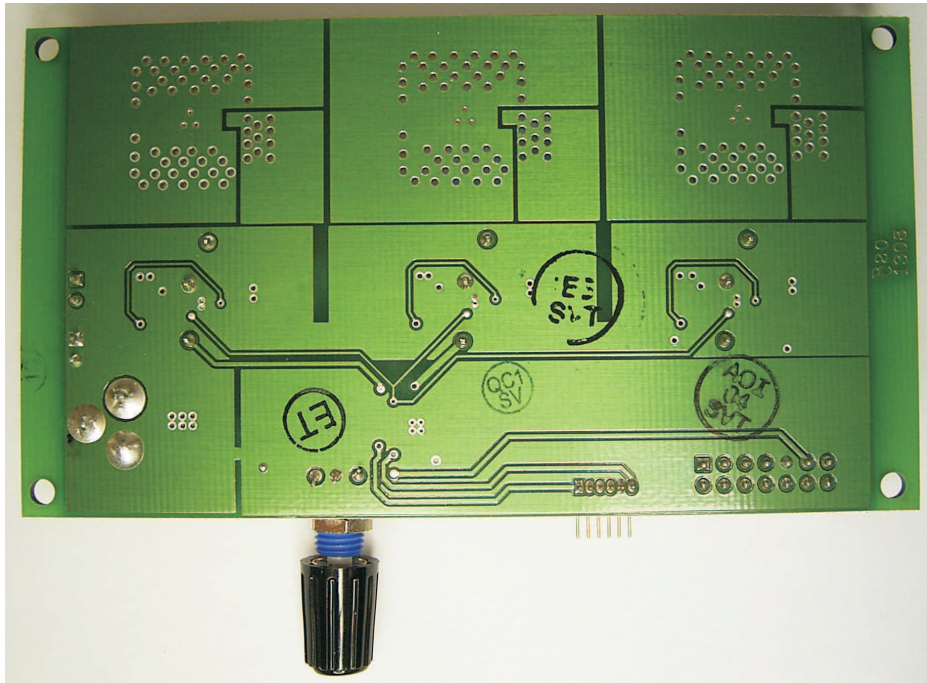


Figure 6-2. HPA338 Bottom View

## 6.2 Layout

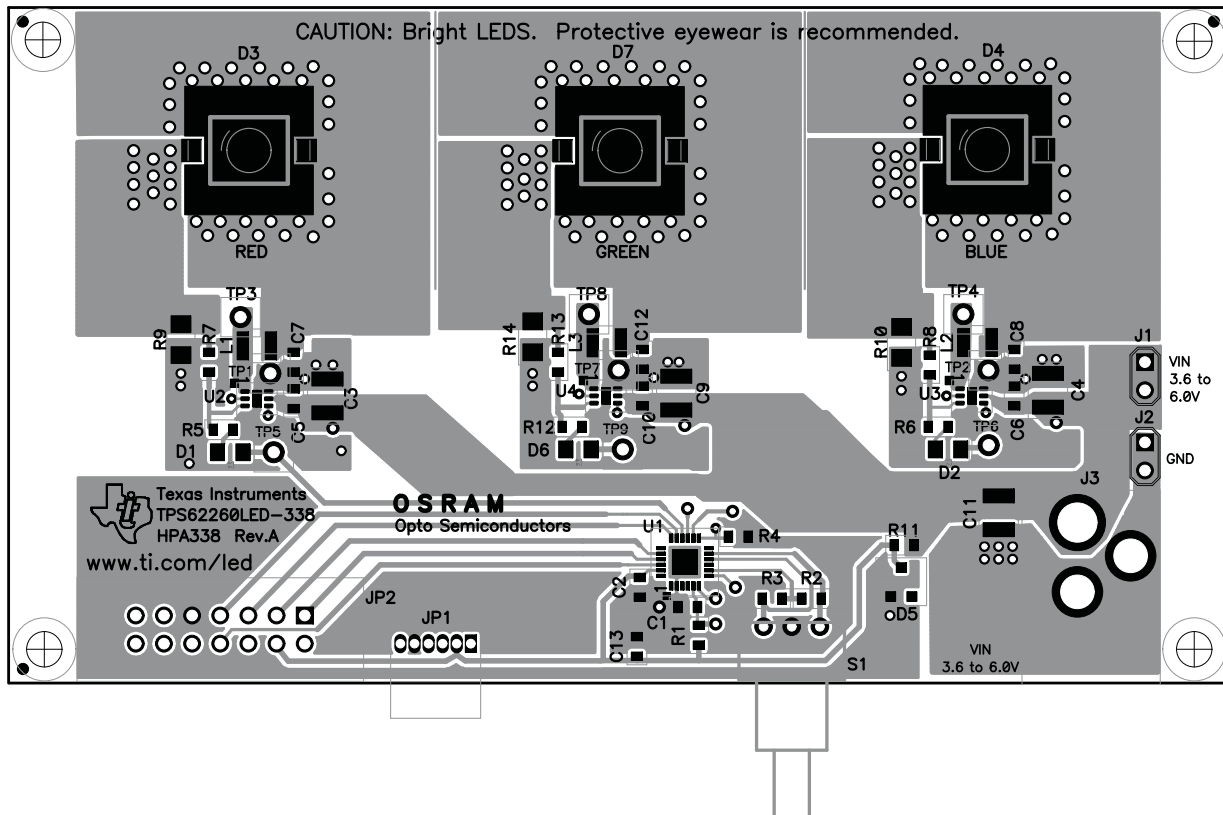


Figure 6-3. PCB Top Assembly Layer

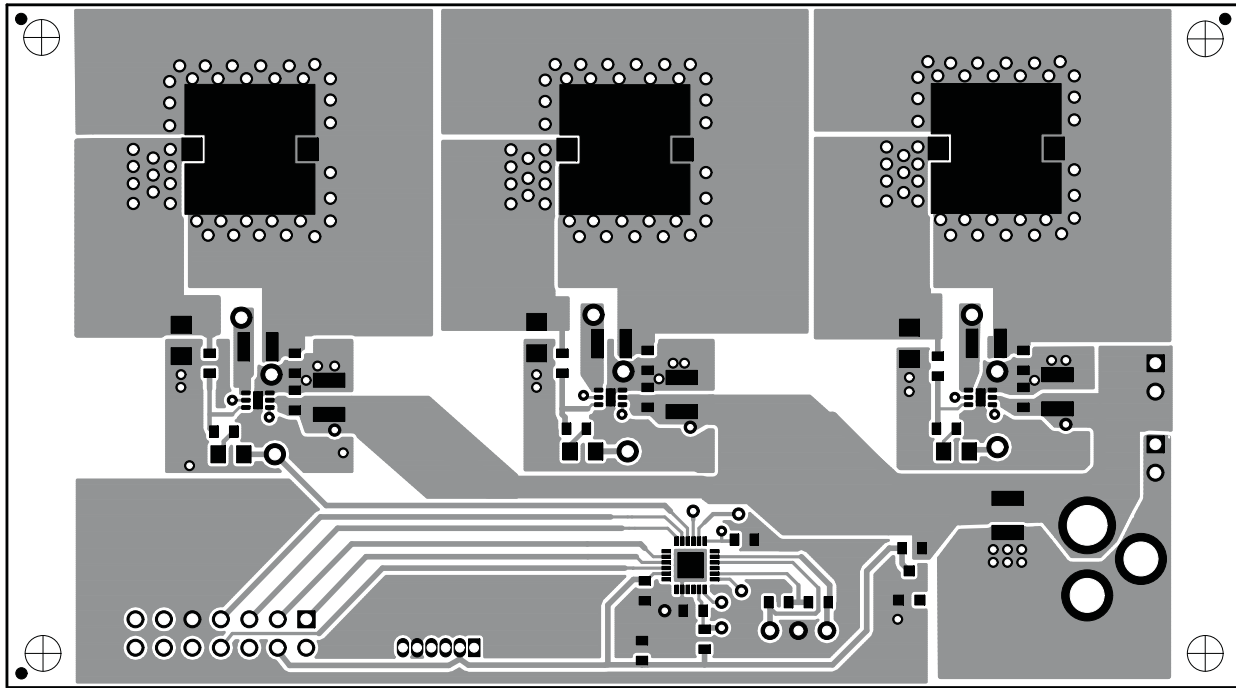


Figure 6-4. PCB Layer One

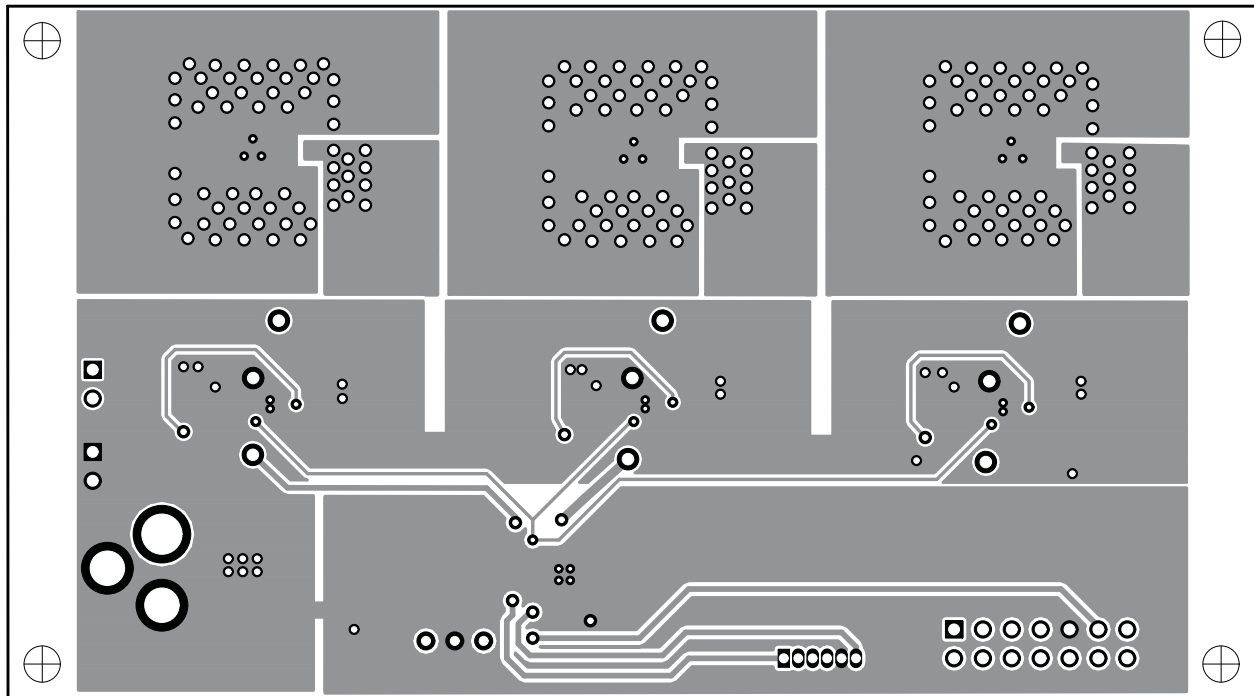


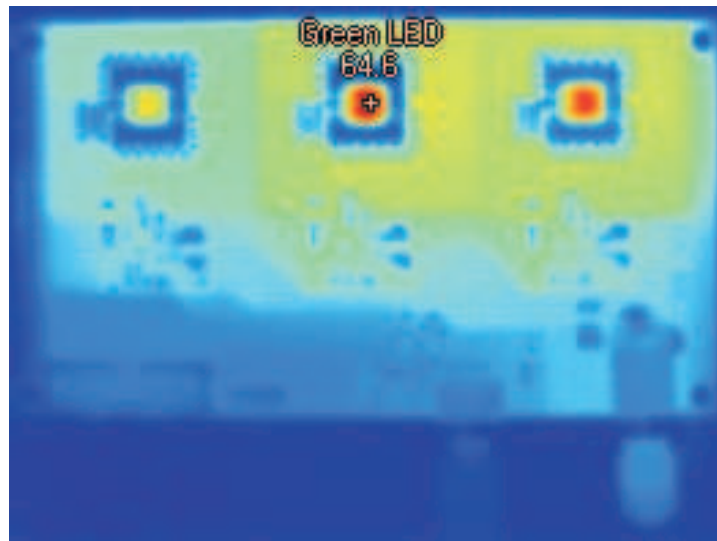
Figure 6-5. PCB Layer Two

### 6.3 Thermal Images

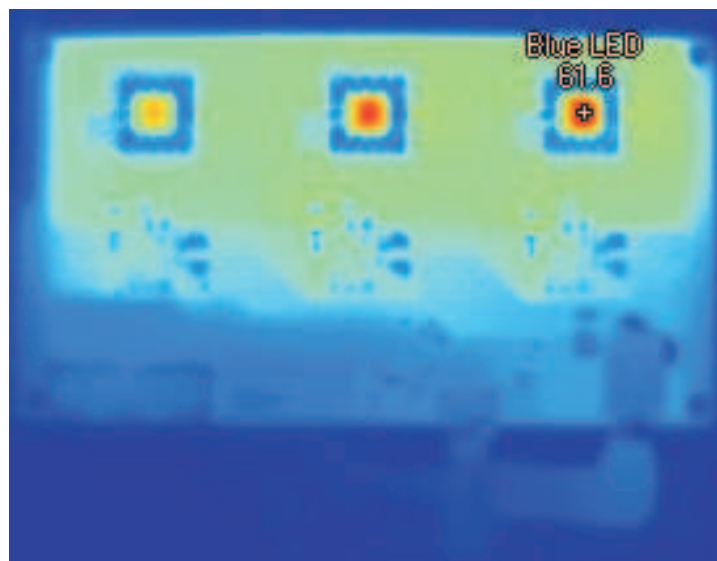
Figure 6-6 and Figure 6-7 show the thermal images of two EVM boards. The image in Figure 6-6 was obtained without using a heatsink and the image in Figure 6-7 with a heatsink mounted on the bottom of the PCB. Using a heatsink not only reduces the operating temperature of each LED, it also helps significantly to spread the heat more evenly.

These images were obtained using modified firmware that forced all three LEDs to operate with a 100% dimming duty cycle, meaning that they are fully on. Using the standard firmware, each LED is on for only one third of the time and off for two thirds of the time. As a result, the heat dissipation during normal use with the standard firmware is significantly lower than in this test case.

The heatsink used was SK 477 100 fixed with the thermally conductive foil WLFT 404 R25 both from Fischer Elektronik.



**Figure 6-6. EVM Without Heatsink**



**Figure 6-7. EVM With Heatsink**

## Reprogramming

---

---

---

### A.1 Additional Software/Hardware Needed

1. IAR Embedded Workbench KickStart

This is a free version that can be downloaded on following web page:  
<http://focus.ti.com/docs/toolsw/folders/print/iar-kickstart.html>. Click on “Download & Register”.

2. Source Code

This source code can be found in the product folder for TPS62260LED-338EVM at the following url:  
<http://focus.ti.com/docs/toolsw/folders/print/tps62260led-338.html> . (Self-written code can also be used.) After downloading the zip file, extract it to a single folder.

3. MSP430 Programmer

Use either MSP-FET430UIF (<http://focus.ti.com/docs/toolsw/folders/print/msp-fet430uif.html>) or MSP-FET430PIF (<http://focus.ti.com/docs/toolsw/folders/print/msp-fet430pif.html>)

### A.2 IAR Embedded Workbench KickStart Software Installation

Extract the downloaded zip file (zip, SLAC050), and execute the install file (FET\_R511.exe). Read through the release notes to make sure that the software is installed properly.

Follow the instructions on the supplied Release Notes document to install the IAR Embedded Workbench KickStart Kit. The term KickStart refers to the function-limited version of Embedded Workbench (including C-SPY debugger). KickStart is supplied on the CD-ROM included with each FET, and the latest version is available from the MSP430 web site. The Release Notes document mentioned in the previous paragraph can be accessed using: Start → Programs → IAR Systems → IAR Embedded Workbench KickStart for MSP430 Vx. KickStart is compatible with Windows 98, Windows 2000, Windows ME, Windows NT 4.0, Windows XP, and Windows Vista. However, the USB FET interface works only with Windows 2000, Windows XP, and Windows Vista.

After installation, a PC reboot is required to start proper operation of the DriverX parallel port driver. This driver is required for proper functionality of debug modules connected to the PC's parallel port (e.g. TI's MSP-FET430PIF).

### A.3 Hardware Installation

For MSP-FET430PIF:

1. Use the 25-conductor cable to connect the Flash Emulation Tool (FET) interface module to the parallel port of your PC. The necessary driver for accessing the PC parallel port is installed automatically during IAR Embedded Workbench installation. Note that a restart is required after the IAR Embedded Workbench installation for the driver to become active.
2. Use the 14-conductor cable to connect the parallel port debug interface module to the HPA338 board.

For MSP-FET430UIF

1. Use the USB cable to connect the USB FET interface module to a USB port of your PC. The USB FET should be recognized instantly, as the USB device driver should have been installed with the KickStart software.



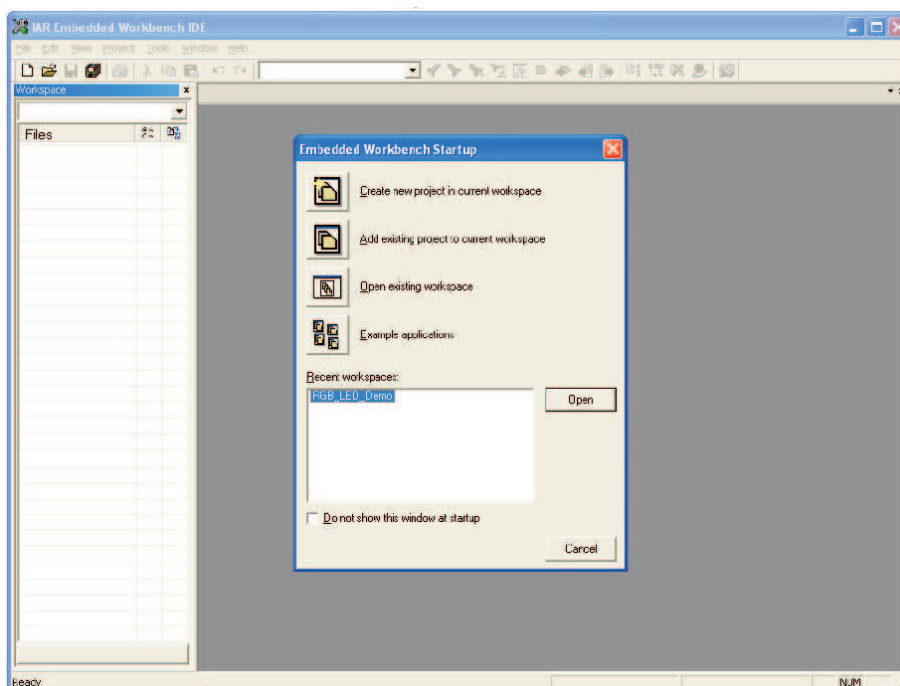
If for any reason the Install Wizard starts, respond to the prompts and, when prompted, browse to the driver files that are located in <Installation Root>\Embedded Workbench x.x\430\bin\WinXP. Detailed driver installation instructions can be found in “MSP-FET430 Flash Emulation Tool (FET) User’s Guide” Appendix E (this document can be downloaded from the following internet page:

<http://focus.ti.com/docs/toolsw/folders/print/iar-kickstart.html> → section Technical Documents).

2. After connecting to a PC, the USB FET performs a self test during which the red LED flashes for about two seconds. After the self test passed successfully, the green LED lights permanently.
3. Use the 14-pin cable to connect the USB FET interface module to the HPA338 board.

#### A.4 Using IAR Embedded Workbench to Download Code on MSP430

1. Start the Workbench (Start → Programs → IAR Systems → IAR Embedded Workbench KickStart for MSP430 Vx → IAR Embedded Workbench).



2. Click Open existing workspace to open an existing file: e.g., HPA338RevA.eww (one of the files that are part of the .zip file that could be downloaded from <http://focus.ti.com/docs/toolsw/folders/print/tps62260led-338.html>) The workspace window opens. You can also generate a new project and program the MSP430 by your own to light the LEDs as desired, but this is far beyond the topic of this user’s guide. For more details on programming the MSP430, refer to [www.ti.com/msp430](http://www.ti.com/msp430).
3. Click Project → Options → FET Debugger → Setup → Connection to select the appropriate port: Texas Instruments LPT-IF for the parallel FET Interface (MSP-FET430PIF) or Texas Instruments USB-IF for the USB Interface (MSP-FET430UIF).
4. Click Project → Rebuild All to build and link the source code.
5. Click Project → Debug to start the C-SPY debugger. C-SPY erases the device Flash and then downloads the application object file to the device Flash. The LEDs on the board turn off.
6. Click Debug → Stop Debugging. Please reset the MSP430 by disconnecting and reconnecting the power plug. This restarts the program on the MSP430.

## EVALUATION BOARD/KIT IMPORTANT NOTICE

Texas Instruments (TI) provides the enclosed product(s) under the following conditions:

This evaluation board/kit is intended for use for **ENGINEERING DEVELOPMENT, DEMONSTRATION, OR EVALUATION PURPOSES ONLY** and is not considered by TI to be a finished end-product fit for general consumer use. Persons handling the product(s) must have electronics training and observe good engineering practice standards. As such, the goods being provided are not intended to be complete in terms of required design-, marketing-, and/or manufacturing-related protective considerations, including product safety and environmental measures typically found in end products that incorporate such semiconductor components or circuit boards. This evaluation board/kit does not fall within the scope of the European Union directives regarding electromagnetic compatibility, restricted substances (RoHS), recycling (WEEE), FCC, CE or UL, and therefore may not meet the technical requirements of these directives or other related directives.

Should this evaluation board/kit not meet the specifications indicated in the User's Guide, the board/kit may be returned within 30 days from the date of delivery for a full refund. **THE FOREGOING WARRANTY IS THE EXCLUSIVE WARRANTY MADE BY SELLER TO BUYER AND IS IN LIEU OF ALL OTHER WARRANTIES, EXPRESSED, IMPLIED, OR STATUTORY, INCLUDING ANY WARRANTY OF MERCHANTABILITY OR FITNESS FOR ANY PARTICULAR PURPOSE.**

The user assumes all responsibility and liability for proper and safe handling of the goods. Further, the user indemnifies TI from all claims arising from the handling or use of the goods. Due to the open construction of the product, it is the user's responsibility to take any and all appropriate precautions with regard to electrostatic discharge.

**EXCEPT TO THE EXTENT OF THE INDEMNITY SET FORTH ABOVE, NEITHER PARTY SHALL BE LIABLE TO THE OTHER FOR ANY INDIRECT, SPECIAL, INCIDENTAL, OR CONSEQUENTIAL DAMAGES.**

TI currently deals with a variety of customers for products, and therefore our arrangement with the user **is not exclusive**.

TI assumes **no liability for applications assistance, customer product design, software performance, or infringement of patents or services described herein.**

Please read the User's Guide and, specifically, the Warnings and Restrictions notice in the User's Guide prior to handling the product. This notice contains important safety information about temperatures and voltages. For additional information on TI's environmental and/or safety programs, please contact the TI application engineer or visit [www.ti.com/esh](http://www.ti.com/esh).

No license is granted under any patent right or other intellectual property right of TI covering or relating to any machine, process, or combination in which such TI products or services might be or are used.

### FCC Warning

This evaluation board/kit is intended for use for **ENGINEERING DEVELOPMENT, DEMONSTRATION, OR EVALUATION PURPOSES ONLY** and is not considered by TI to be a finished end-product fit for general consumer use. It generates, uses, and can radiate radio frequency energy and has not been tested for compliance with the limits of computing devices pursuant to part 15 of FCC rules, which are designed to provide reasonable protection against radio frequency interference. Operation of this equipment in other environments may cause interference with radio communications, in which case the user at his own expense will be required to take whatever measures may be required to correct this interference.

Mailing Address: Texas Instruments, Post Office Box 655303, Dallas, Texas 75265  
Copyright 2008, Texas Instruments Incorporated

## **EVM WARNINGS AND RESTRICTIONS**

It is important to operate this EVM within the input voltage range of 3.6 V to 6.0 V.

Exceeding the specified input range may cause unexpected operation and/or irreversible damage to the EVM. If there are questions concerning the input range, please contact a TI field representative prior to connecting the input power.

Applying loads outside of the specified output range may result in unintended operation and/or possible permanent damage to the EVM. Please consult the EVM User's Guide prior to connecting any load to the EVM output. If there is uncertainty as to the load specification, please contact a TI field representative.

During normal operation, some circuit components may have case temperatures greater than 50°C. The EVM is designed to operate properly with certain components above 50°C as long as the input and output ranges are maintained. These components include but are not limited to linear regulators, switching transistors, pass transistors, and current sense resistors. These types of devices can be identified using the EVM schematic located in the EVM User's Guide. When placing measurement probes near these devices during operation, please be aware that these devices may be very warm to the touch.

Mailing Address: Texas Instruments, Post Office Box 655303, Dallas, Texas 75265  
Copyright 2008, Texas Instruments Incorporated



## IMPORTANT NOTICE

Texas Instruments Incorporated and its subsidiaries (TI) reserve the right to make corrections, modifications, enhancements, improvements, and other changes to its products and services at any time and to discontinue any product or service without notice. Customers should obtain the latest relevant information before placing orders and should verify that such information is current and complete. All products are sold subject to TI's terms and conditions of sale supplied at the time of order acknowledgment.

TI warrants performance of its hardware products to the specifications applicable at the time of sale in accordance with TI's standard warranty. Testing and other quality control techniques are used to the extent TI deems necessary to support this warranty. Except where mandated by government requirements, testing of all parameters of each product is not necessarily performed.

TI assumes no liability for applications assistance or customer product design. Customers are responsible for their products and applications using TI components. To minimize the risks associated with customer products and applications, customers should provide adequate design and operating safeguards.

TI does not warrant or represent that any license, either express or implied, is granted under any TI patent right, copyright, mask work right, or other TI intellectual property right relating to any combination, machine, or process in which TI products or services are used. Information published by TI regarding third-party products or services does not constitute a license from TI to use such products or services or a warranty or endorsement thereof. Use of such information may require a license from a third party under the patents or other intellectual property of the third party, or a license from TI under the patents or other intellectual property of TI.

Reproduction of TI information in TI data books or data sheets is permissible only if reproduction is without alteration and is accompanied by all associated warranties, conditions, limitations, and notices. Reproduction of this information with alteration is an unfair and deceptive business practice. TI is not responsible or liable for such altered documentation. Information of third parties may be subject to additional restrictions.

Resale of TI products or services with statements different from or beyond the parameters stated by TI for that product or service voids all express and any implied warranties for the associated TI product or service and is an unfair and deceptive business practice. TI is not responsible or liable for any such statements.

TI products are not authorized for use in safety-critical applications (such as life support) where a failure of the TI product would reasonably be expected to cause severe personal injury or death, unless officers of the parties have executed an agreement specifically governing such use. Buyers represent that they have all necessary expertise in the safety and regulatory ramifications of their applications, and acknowledge and agree that they are solely responsible for all legal, regulatory and safety-related requirements concerning their products and any use of TI products in such safety-critical applications, notwithstanding any applications-related information or support that may be provided by TI. Further, Buyers must fully indemnify TI and its representatives against any damages arising out of the use of TI products in such safety-critical applications.

TI products are neither designed nor intended for use in military/aerospace applications or environments unless the TI products are specifically designated by TI as military-grade or "enhanced plastic." Only products designated by TI as military-grade meet military specifications. Buyers acknowledge and agree that any such use of TI products which TI has not designated as military-grade is solely at the Buyer's risk, and that they are solely responsible for compliance with all legal and regulatory requirements in connection with such use.

TI products are neither designed nor intended for use in automotive applications or environments unless the specific TI products are designated by TI as compliant with ISO/TS 16949 requirements. Buyers acknowledge and agree that, if they use any non-designated products in automotive applications, TI will not be responsible for any failure to meet such requirements.

Following are URLs where you can obtain information on other Texas Instruments products and application solutions:

### Products

|                             |  |
|-----------------------------|--|
| Amplifiers                  | <a href="http://amplifier.ti.com">amplifier.ti.com</a>             |
| Data Converters             | <a href="http://dataconverter.ti.com">dataconverter.ti.com</a>     |
| DSP                         | <a href="http://dsp.ti.com">dsp.ti.com</a>                         |
| Clocks and Timers           | <a href="http://www.ti.com/clocks">www.ti.com/clocks</a>           |
| Interface                   | <a href="http://interface.ti.com">interface.ti.com</a>             |
| Logic                       | <a href="http://logic.ti.com">logic.ti.com</a>                     |
| Power Mgmt                  | <a href="http://power.ti.com">power.ti.com</a>                     |
| Microcontrollers            | <a href="http://microcontroller.ti.com">microcontroller.ti.com</a> |
| RFID                        | <a href="http://www.ti-rfid.com">www.ti-rfid.com</a>               |
| RF/IF and ZigBee® Solutions | <a href="http://www.ti.com/lprf">www.ti.com/lprf</a>               |

### Applications

|                    |  |
|--------------------|--|
| Audio              | <a href="http://www.ti.com/audio">www.ti.com/audio</a>                   |
| Automotive         | <a href="http://www.ti.com/automotive">www.ti.com/automotive</a>         |
| Broadband          | <a href="http://www.ti.com/broadband">www.ti.com/broadband</a>           |
| Digital Control    | <a href="http://www.ti.com/digitalcontrol">www.ti.com/digitalcontrol</a> |
| Medical            | <a href="http://www.ti.com/medical">www.ti.com/medical</a>               |
| Military           | <a href="http://www.ti.com/military">www.ti.com/military</a>             |
| Optical Networking | <a href="http://www.ti.com/opticalnetwork">www.ti.com/opticalnetwork</a> |
| Security           | <a href="http://www.ti.com/security">www.ti.com/security</a>             |
| Telephony          | <a href="http://www.ti.com/telephony">www.ti.com/telephony</a>           |
| Video & Imaging    | <a href="http://www.ti.com/video">www.ti.com/video</a>                   |
| Wireless           | <a href="http://www.ti.com/wireless">www.ti.com/wireless</a>             |

Mailing Address: Texas Instruments, Post Office Box 655303, Dallas, Texas 75265  
Copyright © 2008, Texas Instruments Incorporated