

320 5046

# Plastic bodied compact limit switches

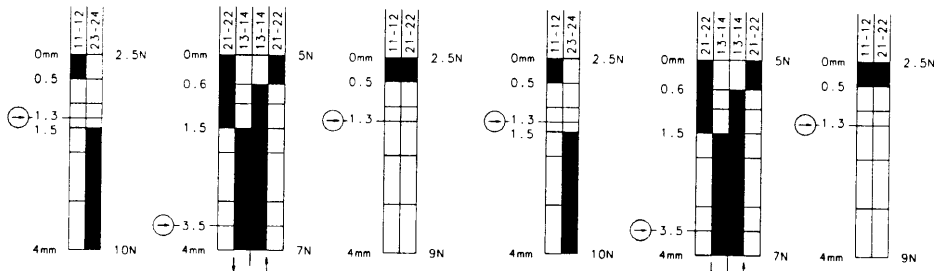
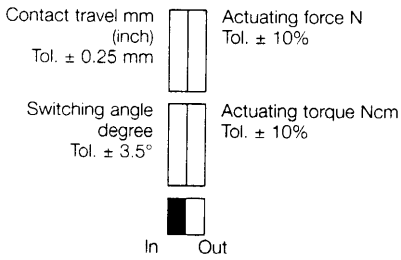
## Tiny Ti2

Compact design  
 Protection class IP 65  
 Mounting measurements according to DIN EN 50047  
 With captive locking lid



Designation  
**Part no.**  
 Switching diagram  
 ⊕ positive break according to IEC 947-5-1 Chap. 3  
 Za: changeover contact is not galvanically isolated  
 Zb: changeover contact is galvanically isolated  
 Slow-action contact/snap-action contact  
 Gasket inside (iw)/outside (w)

Ti2-U1Z w	Ti2-SU1Z w	Ti2-A2Z w	Ti2-U1Z Riw	Ti2-SU1Z Riw	Ti2-A2Z Riw
<b>608.8103.001</b>	<b>608.8153.002</b>	<b>608.8803.003</b>	<b>608.8117.007</b>	<b>608.8167.008</b>	<b>608.8817.009</b>
⊕ Zb	⊕ Zb	⊕ Zb	⊕ Zb	⊕ Zb	⊕ Zb
●/-	-/●	●/-	●/-	-/●	●/-
w	w	w	iw	iw	iw

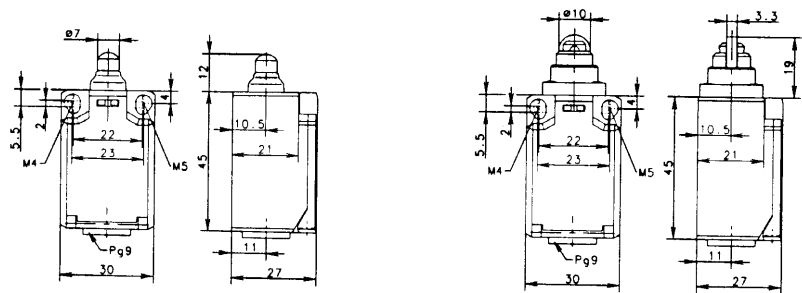
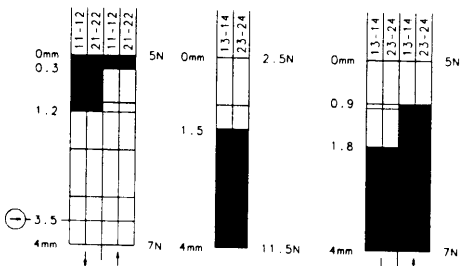
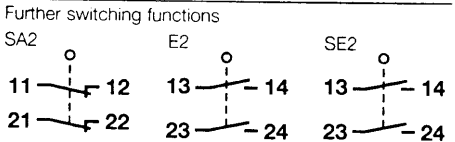


Voltage	max.
Continuous current	max.
Making current, acc. to IEC 947-5-1 AC 15/DC 13	
Switching frequency	max.
Mech. operational life – number of switching cycles	
Ambient temperature	min./max.

250 V AC	250 V AC	250 V AC	250 V AC	250 V AC	250 V AC
10 A	10 A	10 A	10 A	10 A	10 A
●	●	●	●	●	●
100/min.	100/min.	100/min.	100/min.	100/min.	100/min.
3 x 10 <sup>6</sup>	3 x 10 <sup>6</sup>	3 x 10 <sup>6</sup>	3 x 10 <sup>6</sup>	3 x 10 <sup>6</sup>	3 x 10 <sup>6</sup>
-30 °C/+80 °C	-30 °C/+80 °C	-30 °C/+80 °C	-30 °C/+80 °C	-30 °C/+80 °C	-30 °C/+80 °C
-22 °F/+176 °F	-22 °F/+176 °F	-22 °F/+176 °F	-22 °F/+176 °F	-22 °F/+176 °F	-22 °F/+176 °F

Approvals	
Weight	
Type of storage/time of delivery as agreed	

UL, CSA	UL, CSA	UL, CSA	UL, CSA	UL, CSA	UL, CSA
BG	BG	BG	BG	BG	BG
0.04 kg	0.04 kg	0.04 kg	0.05 kg	0.05 kg	0.05 kg
●/-	●/-	●/-	●/-	●/-	●/-



Dimensions  
 All dimensions in mm (inch)