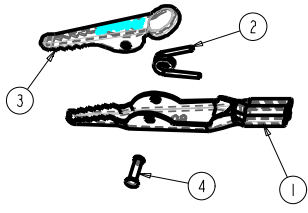


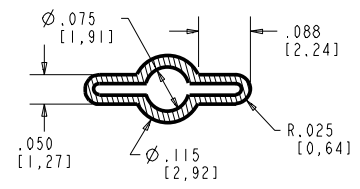
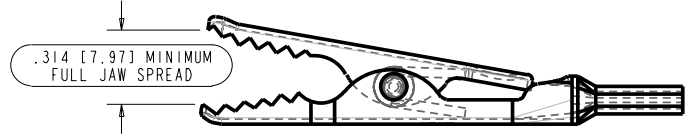
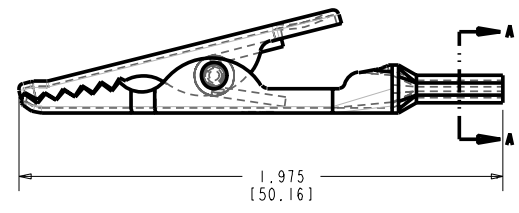
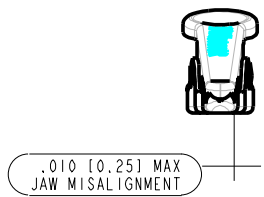
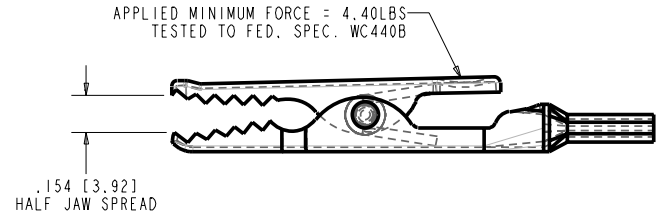
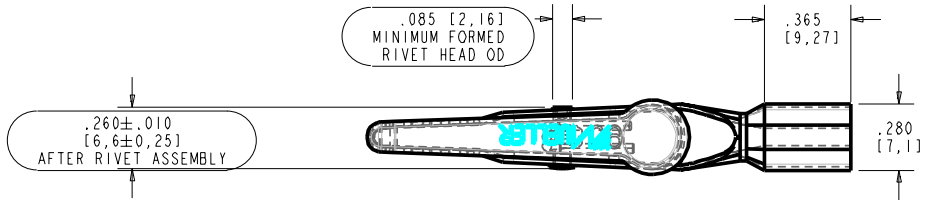
ASSEMBLY: BU-60PR2
DESCRIPTION: BU-60 CLIP WITH CRIMPED BARREL

ID	PART NO.	QTY	DESCRIPTION
1	60-LF-PR2	1	60 LONG FORM CRIMPED
2	60-SP-6	1	TORSION SPRING
3	60-SF	1	60 SHORT FORM DETAIL
4	HD-3060	1	60 STEEL RIVET

REV	ECN	DATE	DESCRIPTION
A		11/8/02	RELEASED PRINT



SCALE 1.000



SECTION A-A
SCALE 5.000

NOTES:

1. DIMENSIONS NOT TOLERANCED ARE FOR REFERENCE ONLY.
2. SPRING FORCE IS TO BE TESTED PER FED. SPEC WC440B AT HALF SPREAD. MINIMUM 4.40LBS @ 5/32"
3. 10 AMP NOMINAL CURRENT CAPACITY.

THIS DRAWING AND THE INFORMATION THEREIN IS THE PROPERTY OF THE MUELLER ELECTRIC COMPANY AND MAY BE USED SOLELY FOR THE PURPOSE FOR WHICH IT IS SUBMITTED. IT IS TO BE TREATED IN CONFIDENCE. IT MAY NOT BE CIRCULATED, REPRODUCED OR DIVULGE TO OTHER PARTIES WITHOUT WRITTEN CONSENT OF MUELLER ELECTRIC INC. IT MUST BE RETURNED UPON REQUEST.

VENDOR BLOCK		MUELLER		MUELLER ELECTRIC CO. 1583 E. 31st ST. CLEVELAND, OH 44114	
THE VENDOR LISTED BELOW AGREES TO PROVIDE MUELLER ELECTRIC INC. WITH THE AGREED PRODUCT TO THE SPECIFICATIONS OF THIS PRINT. NO CHANGES WILL BE MADE WITHOUT THE APPROVAL OF MUELLER ELECTRIC INC.		SCALE: 2.000	DWG SIZE: B	APPROVED BY:	DRAWN BY: TJS
COMPANY: _____		DWG DATE: 11/8/02	REV DATE: 11/8/02	EDITED BY: TJS	
REP: _____		PART NUMBER: BU-60PR2		FILE: BU-60PR2	
TITLE: _____		DESCRIPTION: PHONE TIP ALLIGATOR CLIP		REV: A	
DATE: _____		TOLERANCE: X, Y, Z: ±0.1 X, XX: ±0.01 X, Y, Z: ±0.005 X": ±0.5		DRAWING NUMBER: N/A	
				REV: A SHEET NO. 1 OF 1	