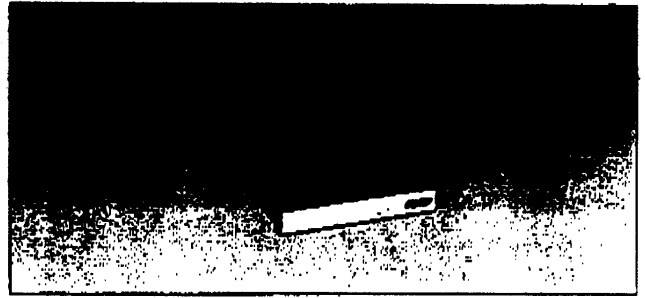
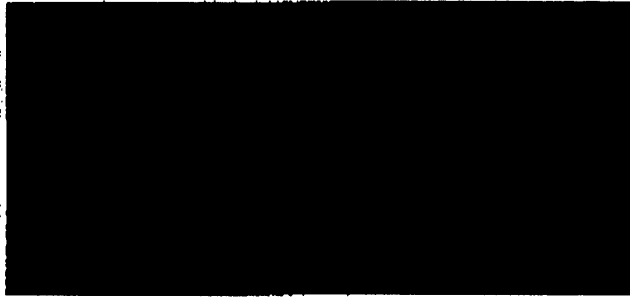


717 0919/0920

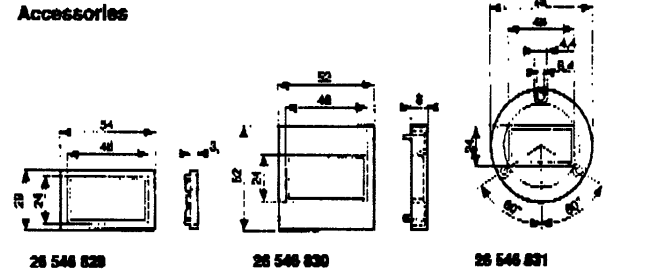
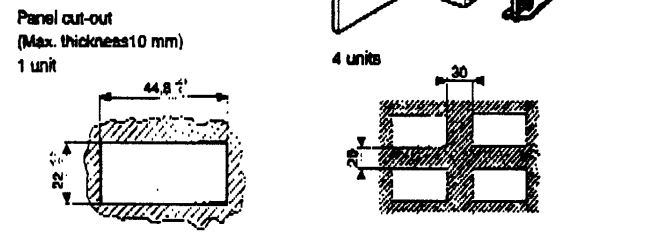
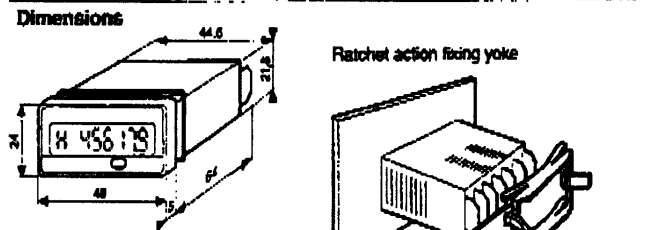
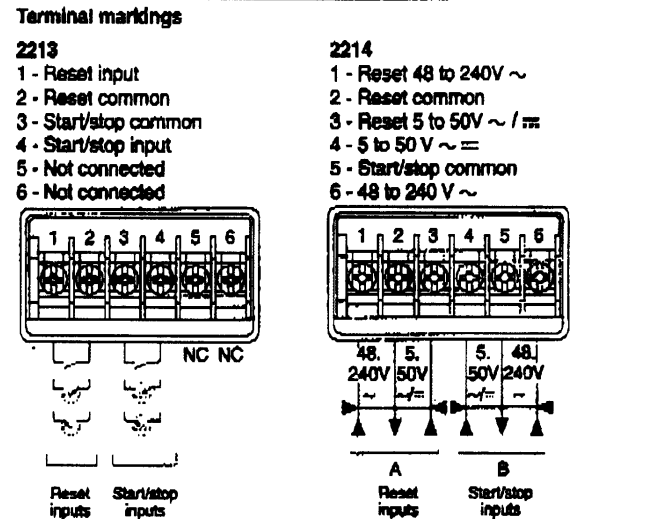
Hour counters, LCD, 24 x 48

CP2 2213 / 2214



Characteristics	
Function	Hour counter
Display	6 digit LCD
Height of digits	7 mm
Time ranges	0 - 99,999.9 h 0 - 99,999.9 min 0 - 99,999.9 s 0 - 99 h 59 min 59 s
Time base : Crystal controlled (Accuracy ± 50)	•
Possibility of loading the current value	•
Inputs	
2213	One start/stop input by volt-free contact or NPN/PNP open-collector transistor (terminals 3 - 4) Minimum time closed 40 ms
2214	One start/stop input Two voltage levels terminals 4 - 5 terminals 5 - 6 Minimum pulse time ~ 50 ms Minimum pulse time = 35 ms
Reset	
Front panel	Switch no.2 to OFF Switch no.2 to ON Inhibited Allowed
2213	Volt-free contact or open-collector transistor (terminals 1-2) Minimum time closed 100 ms
External	2214 Voltage terminals 2 - 3 terminals 1 - 2 48 - 240 V ~ 100 ms
The reset is galvanically isolated from the counting input (2214 only)	
Supply	
2213 and 2214 - 1 lithium battery - Life (years)	5
Supply can be switched off by dipswitch no.1 situated underneath the unit.	
General specifications	
Material	Self-extinguishing
Connection : by 6 screw terminals at rear of casing	•
Terminal capacity	2 x 1.5 mm ²
Fixing by yoke	•
Front panel protection	IP 66
Temperature Use	- 10 + 55 °C
limits Stored	- 20 + 70 °C
Conformity to standards VDE 0110 - IEC 664 - IEC 348 - IEC 255.4 - IEC 255.5 - IEC 801.2 - IEC 801.4	•
Weight	2213 60 g 2214 65 g

Types	2213	2214
Part numbers		
Input, solid state	87 610 140	
Voltage input		87 610 150
Accessories		
Adaptor for 25x50 mm (dimensions 29x54 mm)		26 546 829
panel cut-out 45x45 mm (dimensions 52x52 mm)		26 546 830
Ø50 mm (dimensions Ø73 mm)		26 546 831



Other information

For connections see page 2/19

Standard products

1 Part number
Example : Totalizer/counter 87 610 140

2 Accessory
Adaptor 26 546 829