

# MICRO SWITCH

FREEDPORT ILLINOIS U S A  
A DIVISION OF HONEYWELL

FED. MFG CODE 91929

# SWITCH - BASIC

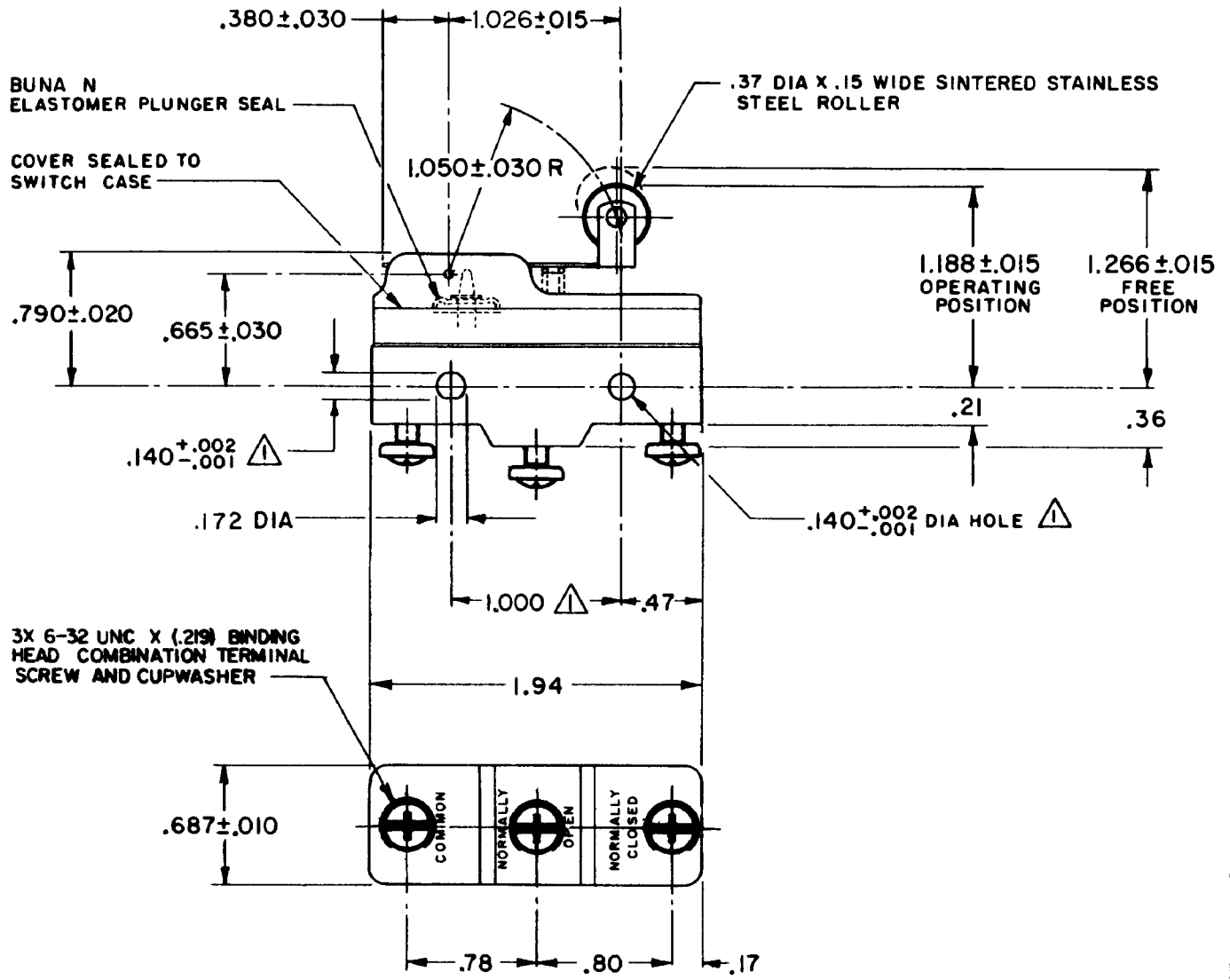
CATALOG LISTING  
**BZ-2RW8225551-A2**

**AQB2100**

CATALOG LISTING  
**BZ-2RW8225551-A2**  
 PAGE 1 OF 1  
**M**  
 ISSUE 10  
 RJ  
 29 AUG 05  
 RELEASE NO. PR-1037  
 REPLACES  
 CHECK  
 REVISIONS  

A	CO67209	J A P	15 JAN 70
3		MAY 90	
B	CO 70184-H	G R T	2 JUN 92
C	CO-12827-B	D H D	19 MAY 93
D	CO-75204B	DAW	1 FEB 94
E	CO-77589	MAM	29 MAR 94
F	CO-82888	J A K	23 APR 98
G	CO84951A	J A K	1 DEC 97
H	CO93346	DLT	18 SEP 98
J	CO015138	SPK	29 AUG 05

 CHECK  
 22 DEC 69  
 DRAWN  
**FORMTEK**



**NOTES**  
 ▲ MOUNTING HOLES WILL ACCEPT PINS OR SCREWS OF .139 MAX DIA ON 1.000±.002 CENTERS  
 2 - SEALED CONSTRUCTION PROVIDES SPLASH RESISTANCE

THIS DRAWING COVERS A PROPRIETARY ITEM AND IS THE PROPERTY OF MICRO SWITCH, A DIVISION OF HONEYWELL THIS DRAWING IS NOT TO BE COPIED OR USED WITHOUT THE APPROVAL OF MICRO SWITCH.

CHARACTERISTICS	ELECTRICAL DATA	SCALE FULL	
OPERATING FORCE ----- 6 OZ MAX	CONTACT ARRANGEMENT S P D T	DO NOT SCALE PRINT	
RELEASE FORCE ----- 1/2 OZ MIN	<b>L96</b> 15A 125, <u>250</u> OR 480 VAC 1/8 HP 125 VAC, 1/4 HP <u>250</u> VAC 1/2A 125 VDC, 1/4A 250 VDC -L288- -L306- -L315-	UNLESS OTHERWISE NOTED DIMENSIONS ARE IN INCHES <b>TOLERANCES ARE:</b>	
DIFFERENTIAL TRAVEL ----- .003 -.020		CE EN 05 EC 16A 250V ~ T85 5E4	ONE PLACE ( 0 ) ± .030 TWO PLACE (.001) ± .015 THREE PLACE (.000) ± .005 ANGLES ± .005
OVERTRAVEL ----- .094 MIN			WEIGHT .076 LB