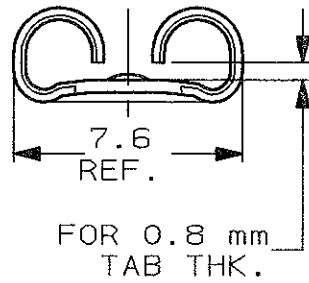
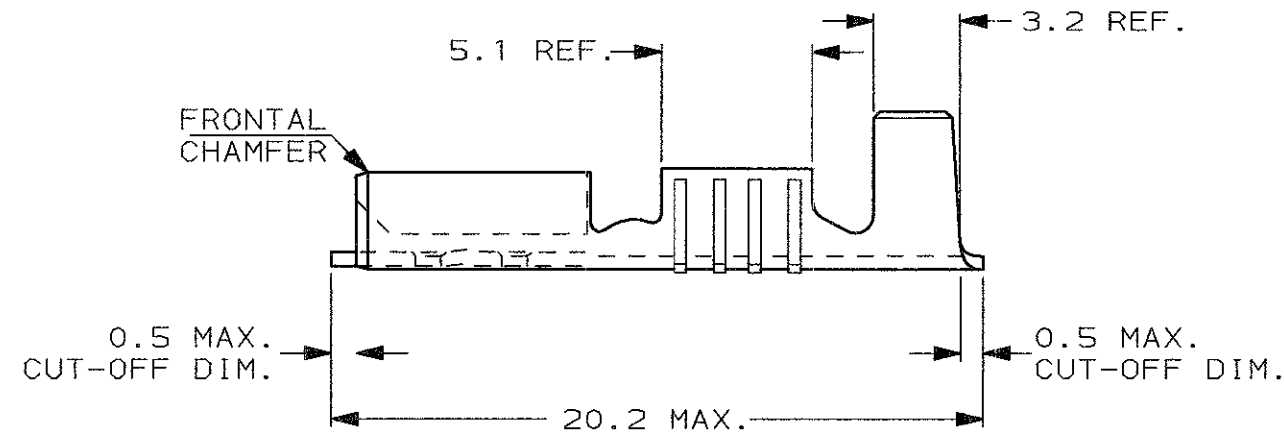
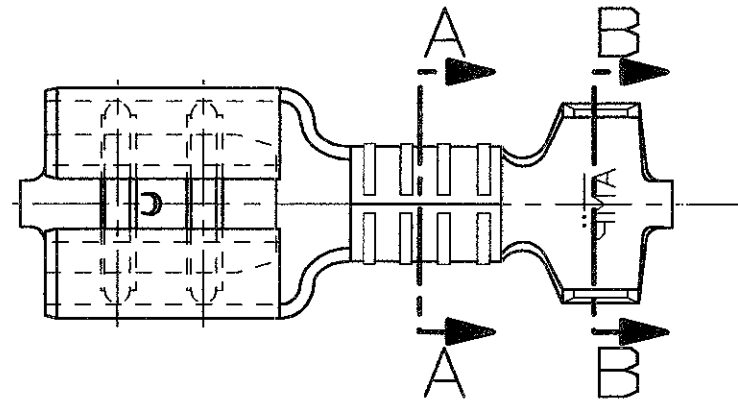


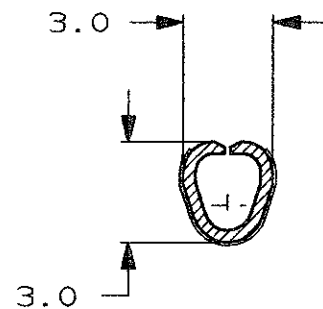
SCALA NON IMPEGNATIVA
(DO NOT SCALE)
DIMENSIONI IN mm
(DIMENSIONS IN)

METRIC

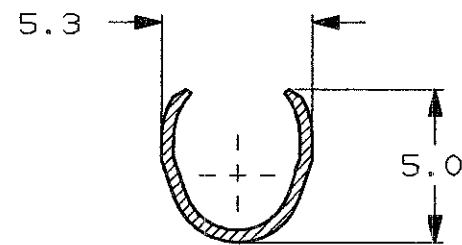


- 1) PER LE VERSIONI IN NASTRO
VEDERE DISEGNO 280001
(FOR STRIP FORM VERSION SEE DRAWING 280001)
- 2) CONFEZIONAMENTO IN ACCORDO
ALLA SPECIFICA AMP 107-20201
(PACKAGED ACCORDING TO AMP SPEC. 107-20201).

SEZIONE A-A
SECTION A-A



SEZIONE B-B
SECTION B-B



NUDO (UNPLATED)	OTTONE (BRASS)	0-181903-4	G
STAGNATO (TIN PLATED)	OTTONE (BRASS)	0-181903-1	G
FINITURA / COLORE (FINISH / COLOUR)	MATERIALE (MATERIAL)	NUMERO (PART NUMBER)	REV

CUSTOMER DWG. FOR REFERENCE ONLY **DISEGNO PER CLIENTE SOLO PER RIFERIMENTO**

THIS DRAWING IS UNPUBLISHED. RELEASE FOR PUBLICATION 19
© COPYRIGHT 19 BY AMP INCORPORATED, HARRISBURG, PA. ALL INTERNATIONAL RIGHT RESERVED. AMP PRODUCTS MAY BE COVERED BY U.S. AND FOREIGN PATENT AND/OR PATENT PENDING

TOLLERANZE: SE NON DIVERSAMENTE SPECIFICATO (TOLERANCES, UNLESS OTHERWISE SPECIFIED)	DIAM. ISOLANTE (INS. DIA. RANGE)	RANGO FILO (WIRE RANGE) mm ²	SCALA (SCALE)
± 0.3	3.0-4.3	1.0-2.5	4:1

ANGOLI (ANGLES) ± 2°

AMP AMP ITALIA S.p.A.
Corso F.lli Cervi, 15
COLLEGNO (TORINO)

DIS. H. YAALI (DR.) 15 SEP 2000

DESCRIZIONE (DESCRIPTION) FASTON® Connector, .250" sr. REC. CONTACT. (LOOSE PIECE VERSION)

CONT. C. TARTARI (CHK) 15 SEP 2000	LOC. SIZE	NUMERO (DWG NO)	REV.	FOGLIO (SHEET)
	I A3	C-181903	G	1 DI (OF) 1

REV. (REV. NO.)	REVISIONI (REVISION RECORD)	DIS. (DR.)	DATA (DATE)	APP. (APP.)
G	OBSOLETE PARTS & REDRAWN ET00-0161-01	H. Y.	04 JUL 2000	

DISTRIBUZIONE
(PRINT DIST.)