

5.5" PMOLED



DENSITRON®
DISPLAYS



FEATURES

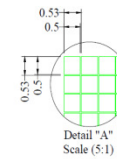
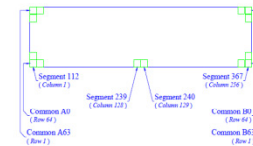
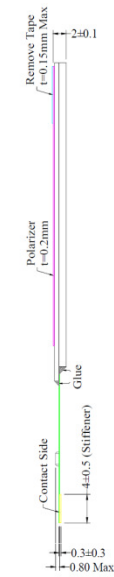
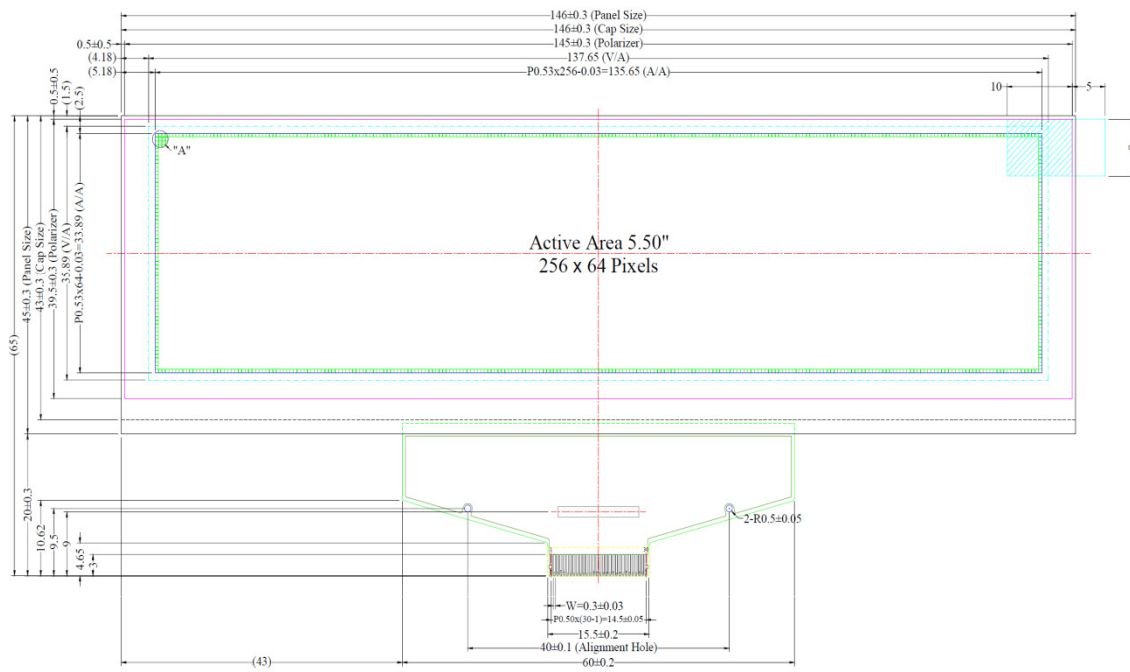
Diagonal Size	5.50"
Number of Pixels	256'64
Color	Green (16 Gray Scales)
Panel Size	146 x 45 x 2 mm
Module Size	146 x 65 x 2mm
Active Area	135.65 x 33.89 mm
Pixel Pitch / Size	0.53 x 0.53 mm / 0.50 x 0.50 mm
Duty	1/64
Interface	8-bit 68XX/80XX Parallel, 3-/4-wire SPI
Driver IC	SSD1322 (Solomon Systech)
Power Supply	2.4~3.5V (Device) / 18V (Display)
Assembly	Connector



OPTICAL CHARACTERISTICS

Characteristics	Symbol	Conditions	Min	Typ	Max	Unit
Brightness	Lbr	Normal	100	120		cd/m ²
		(Standby)		30		cd/m ²
C.I.E. (Green)	(x)		0.27	0.31	0.35	
	(y)		0.58	0.62	0.66	
Dark Room Contrast	CR			>2000:1		
View Angle			>160			degree
Response Time				10		ms
Uniformity			90			%





Pin	Symbol
1	N.C. (GND)
2	VSS
3	VCC
4	VCOMH
5	VLSS
6	D7
7	D6
8	D5
9	D4
10	D3
11	D2
12	D1
13	D0
14	ERD#
15	R/W#
16	BS0
17	BS1
18	D/C#
19	CS#
20	RES#
21	FR
22	IREF
23	N.C.
24	VDDIO
25	VDD
26	VCI
27	VSL
28	VLSS
29	VCC
30	N.C. (GND)

DENSITRON®
DISPLAYS