

FREQUENCIES AVAILABLE	MODEL DESIGNATOR	OVERALL STABILITY
40kHz~150MHz	1210A	± 25PPM
	1210B	± 50PPM
	1210C	±100PPM

Note 1 Stability options are inclusive of: Calibration Tolerance at 25°C, Operating Temperature Range, Supply Voltage Change, Load Change, Ageing, Shock & Vibration.

Parameter	Code	Value	Unit	Remarks
Storage Temperature Range	Tstg	-55 to +125	°C	
Operating Temperature Range	Top	0 to +70	°C	
Input Voltage	V _{CC}	+5	V DC	±10%
Max Input Current	I _{CC}	20	mA Max	500 kHz to 20MHz
		40		20.1MHz to 70MHz
		60		70.1MHz to 150MHz
Duty Ratio	SY	40:60	%	At 50% V _{DD}
"0" Level	V _{OL}	0.5	V DC	Max
"1" Level	V _{OH}	4.5	V DC	Min
Max Rise/Fall Time	Tr:Tf	10	nS Max	500 kHz to 20MHz
		6		20.1MHz to 70MHz
		4		70.1MHz to 150MHz
Start-Up Time	TSTART	5	mS	
Fan-Out (Load)		15pF Min 1-10 TTL		HCmos TTL

MECHANICAL

Drop Test - Drop Module onto a hard wooden surface from 20cm 3 times

Shock Test - 1500g (Peak) 0.35mS (1/2 Sine Wave) 5 Times

Vibration Test - Vibrations with an amplitude of 3mm and a sweep from 10-55 Hz duration 1 minute shall be applied for 2 hours in each of the x,y, & z axes

ENVIRONMENTAL

Solder Heat - Immerse pins to within 1mm of glass stand-offs in solder bath of 280°C ±10°C for 10 secs

Life Test - After exposure to +125°C (Power Applied) for 1000 Hrs

Cold Resistance - After exposure to -40°C for 2 hrs

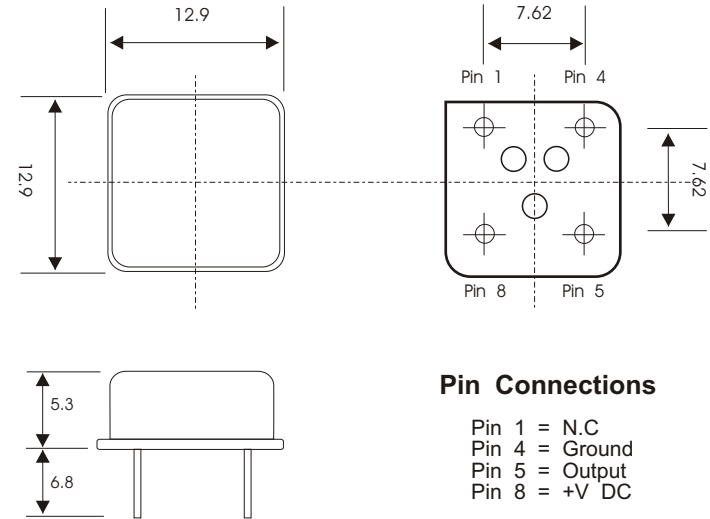
Humidity - After exposure to +40°C 90-95% RH for 48 Hrs

Thermal Shock - After 10 cycles of exposure to -55°C & 125°C with 10mins exposure at each extreme

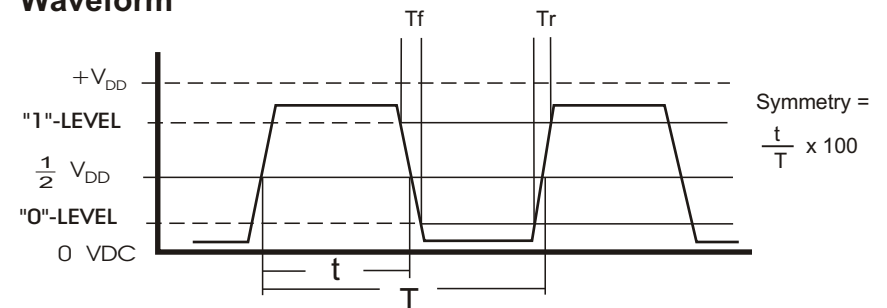
Fine Leak - Helium leak detector, pressure 5kg.f/cm³ for 2 Hrs, leakage less than 1 x 10⁻⁸ Atm.cc/Sec

TITLE: AEL 1210 Series Crystal Oscillator 8-Pin DIL UNIVERSAL O/P (Hcmos & TTL) 500kHz to 100MHz

AEL PART N°	Issue Number	Issue Date	Approved
General Specification	5	19/03/2000	GR
	Frequency Increased to	150MHz	



Waveform



Module 'D' Airtech 2
Jenner Road, Crawley
W. Sussex. RH10 2GA

Tel: 01293 524245
Fax: 01293 524888

© Not to be reproduced without permission of AEL Crystals Ltd