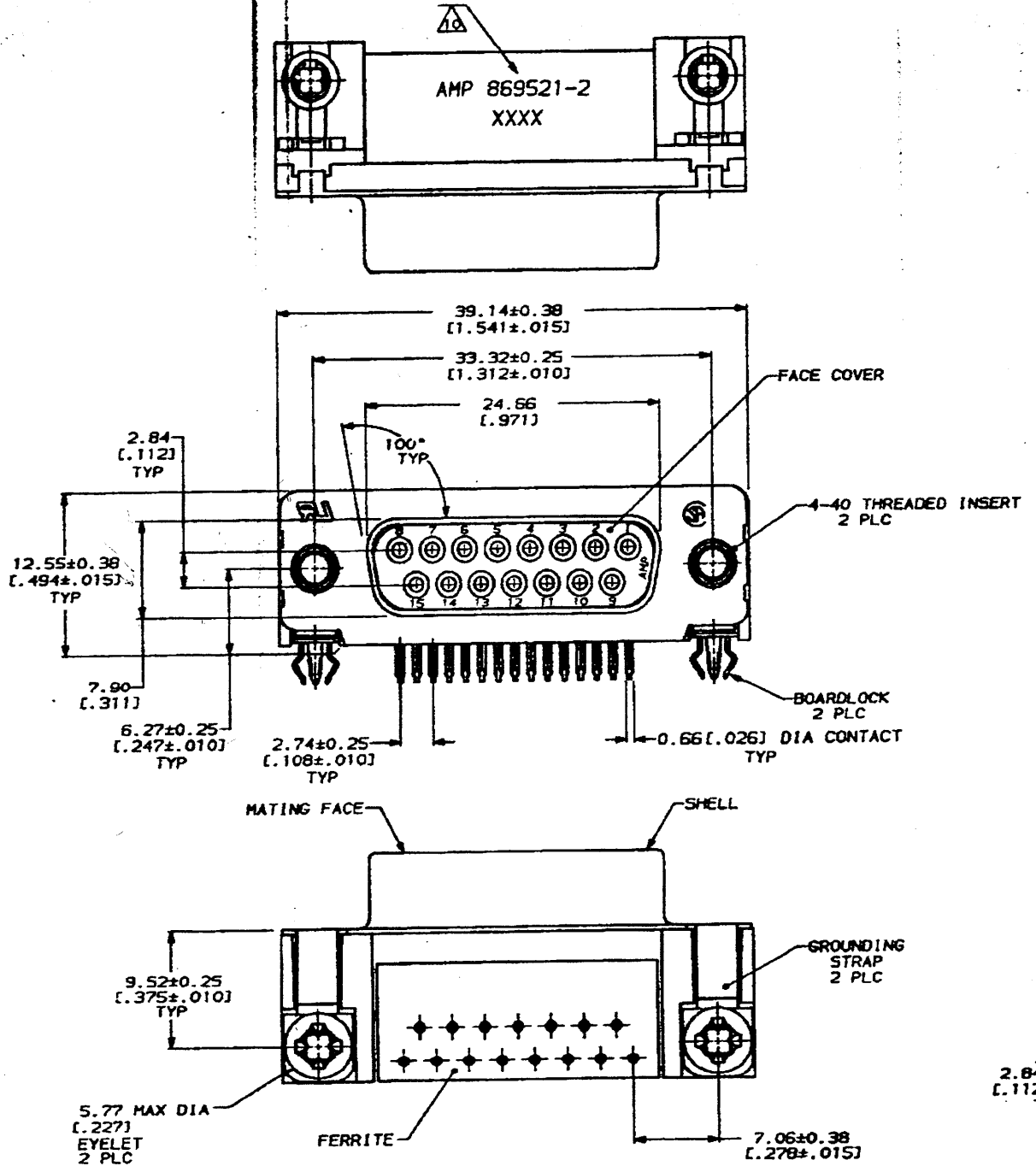


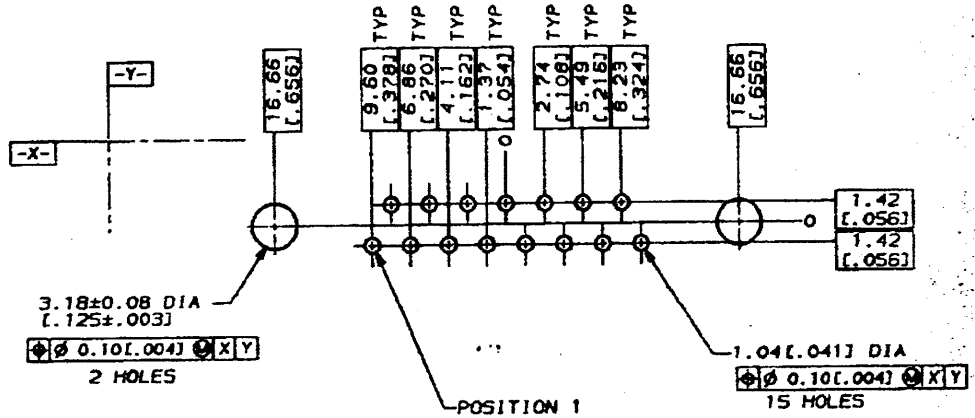
151-749

THIS DRAWING IS UNPUBLISHED. RELEASED FOR PUBLICATION
© COPYRIGHT 1988 BY AMP CORP. ALL RIGHTS RESERVED.

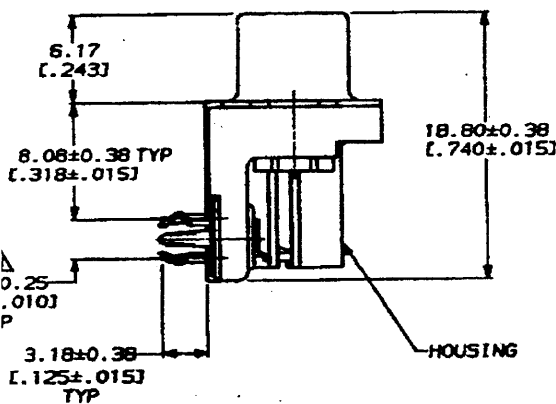


REV		DATE		DESCRIPTION		BY	APPD
6	BD	80		0	RELEASED MPR 3758		

- ▲ POLYESTER, UL 94V-0 RATED, GLASS FILLED, BLACK.
- ▲ NYLON, UL 94V-0 RATED, GLASS FILLED, BLACK.
- ▲ PHOSPHOR BRONZE PER QQ-B-750.
- ▲ CARBON STEEL PER ASTM A109.
- ▲ BOARDLOCKS, COPPER ALLOY, EYELETS, BRASS, INSERTS, ZINC.
- ▲ GOLD PLATING PER MIL-G-45204, NICKEL PLATING PER QQ-N-290, TIN PLATING PER MIL-T-10727, COPPER PLATING PER MIL-C-14550.
- ▲ 5.08µm [.000200] MIN TIN OVER 2.54µm [.000100] MIN COPPER.
- ▲ BOARDLOCKS; 5.08µm [.000200] MIN TIN-LEAD OVER 1.27µm [.000050] MIN NICKEL. EYELETS; 5.08µm [.000200] MIN TIN OVER COPPER FLASH.
- ▲ INSERTS; CLEAR CHROMATE.
- ▲ 0.76µm [.000030] MIN GOLD FOR A LENGTH OF 1.40 [.055] MIN FROM MATING END, 2.54µm [.000100] MIN TIN FOR A LENGTH OF 3.56 [.140] MIN ON OPPOSITE END, BOTH OVER 0.76µm [.000030] MIN NICKEL.
- ▲ AMP, PART NUMBER AND DATE CODE.
- ▲ DIMENSION APPLIES FROM CENTER OF CONTACTS.



P.C. BOARD MOUNTING DIMENSIONS
P.C. BOARD THICKNESS, 1.57 [1.062]



		869521-2	
		PART NO	
DO NOT SCALE PRINT. UNLESS SPECIFIED DIMENSIONS IN INCHES TOLERANCES ON: 2 PLG DEC ± 0.13 [1.000] 2 PLG DISC ± . ANGLES ± 2°		OR 12-13-81 V. GLENNER OR 1-17-82 R. STONE APPD 1-24-82 S. BOLASH APPD 1-24-82 C. BRIDE	
MATERIAL: ▲ HOUSING: ▲ FACE COVER: ▲ CONTACTS: ▲ SHELL: ▲ HARDWARE: ▲ FINISH: ▲ SHELL: ▲ HARDWARE: ▲ CONTACTS: ▲		AMP AMP Incorporated Harrisburg, PA 17105-3808 NAME: RECEPTACLE ASSEMBLY, SIZE 2, 15 POSITION, RIGHT ANGLE, FRONT METAL SHELL, .310 SERIES, AMPLIMITE™ HD-20, FILTER	
PRODUCT SPEC: 108-1355 APPLICATION SPEC: 114-40034 WEIGHT: -		SIZE: D CASE CODE: 00779 SCALE: 4:1	DRAWING NO: 869521-2 SHEET: 1 OF 1

CUSTOMER DRAWING