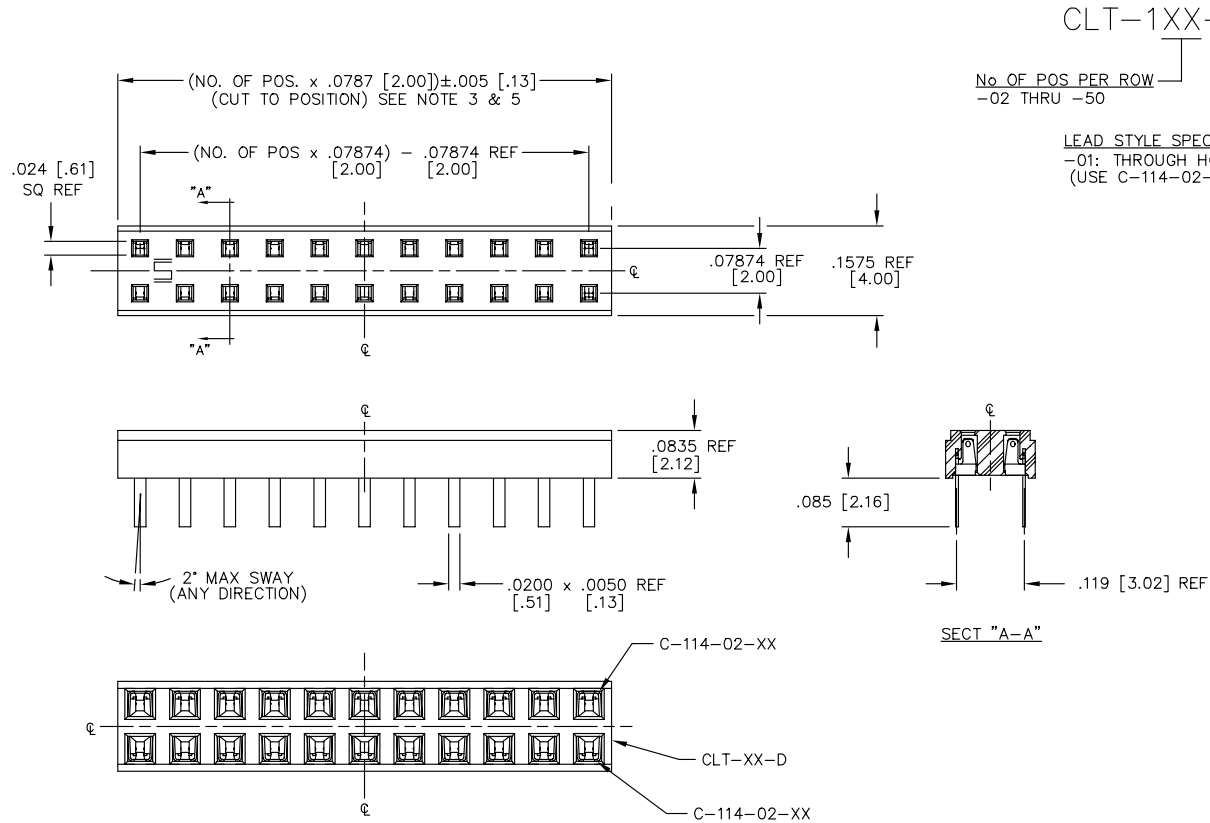


REVISION P

UNLESS OTHERWISE NOTED		TITLE:	DWG NO:
DIMENSIONS ARE IN INCHES		2 MM LOW PROFILE	CLT-1XX-01-XX-D-X
TOLERANCES ARE:		SOCKET STRIP	SHEET 1 OF 1
ONE PLACE DECIMALS $\pm .1$ [2.5]	THREE PLACE DECIMALS $\pm .005$ [.13]	ANGLES $\pm 10^\circ$	
TWO PLACE DECIMALS $\pm .01$ [.3]	FOUR PLACE DECIMALS $\pm .0020$ [.051]		



CLT-1XX-01-XX-D-X

No OF POS PER ROW  
-02 THRU -50

LEAD STYLE SPEC.  
-01: THROUGH HOLE (USE C-114-02-XX)

OPTION  
-P: PICK & PLACE PAD AVAILABLE ON POSITIONS 04 THRU 50 ONLY (SEE FIG. 2 USE MPP-03)

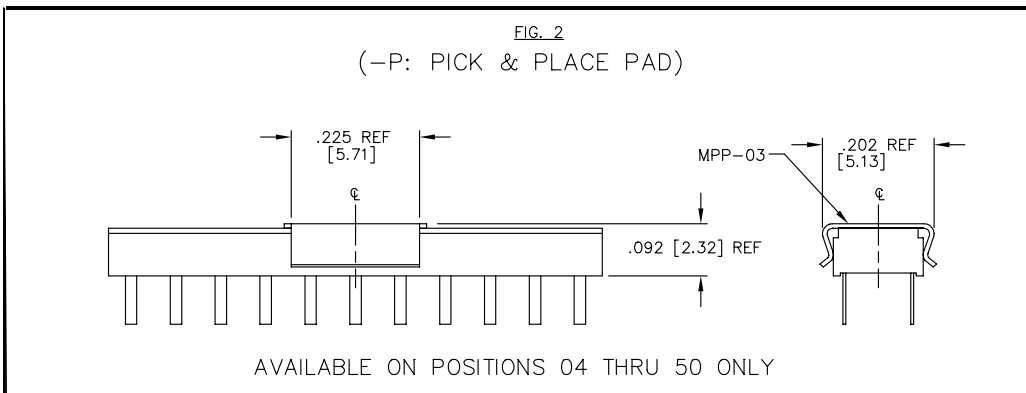
ROW SPEC.  
-D: DOUBLE ROW

PLATING  
-F: .00003 GOLD IN CONTACT AREA, TIN ON TAIL (POST-PLATE ONLY)  
-L: .000010 GOLD IN CONTACT AREA, TIN ON TAIL (POST-PLATE ONLY)  
-G: .000010 GOLD IN CONTACT AREA, FLASH GOLD ON TAIL (POST-PLATE ONLY)  
-S: .000030 GOLD IN CONTACT AREA, TIN ON TAIL (POST-PLATE ONLY)  
-FM: .00003 GOLD IN CONTACT AREA, MATTE TIN ON TAIL (POST-PLATE ONLY)  
-LM: .000010 GOLD IN CONTACT AREA, MATTE TIN ON TAIL (POST-PLATE ONLY)  
-SM: .000030 GOLD IN CONTACT AREA, MATTE TIN ON TAIL (POST-PLATE ONLY)

TABLE 1

OPTION	TUBE	PLUG
--	PT-1-24-12-09	TP-12
-P	PT-1-24-01-37	TP-24-02

PT-1-24-12-09      PT-1-24-01-37



- NOTES:
1. MINIMUM PUSHOUT FORCE: .5 LB.
  2. WILL LOSE A POSITION FOR EVERY CUT MADE ON A SOCKET STRIP.
  3. PARTS TO BE SYMMETRICAL ABOUT  $\epsilon$ .
  4. PACKAGE POSITIONS -04 THRU -50 IN TUBES. LAYER PACKAGE POSITIONS -02 THRU -03.
  5. ENDWALL AFTER CUTTING: .0245 ± .003 [.622 ± .08]

**PROPRIETARY NOTE**  
THIS DOCUMENT CONTAINS INFORMATION CONFIDENTIAL AND PROPRIETARY TO SAMTEC INC. AND SHALL NOT BE REPRODUCED OR TRANSFERRED TO OTHER DOCUMENTS OR DISCLOSED TO OTHERS OR USED FOR ANY PURPOSE OTHER THAN THAT FOR WHICH IT WAS OBTAINED WITHOUT THE EXPRESSED WRITTEN CONSENT OF SAMTEC INC.

PLOT SCALE: 1=-.15  
EXISPROD\ASSEMBLY\2MM  
CLT-THAS

**samtec**

720 PARK EAST BLVD. NEW ALBANY, INDIANA 47150  
PHONE (812) 944-6733 P.O. BOX 1147  
CODE 55322

MADE BY: PURVIS 11-02-95      CLT-1XX-01-XX-D-X  
SHEET 1 OF 1