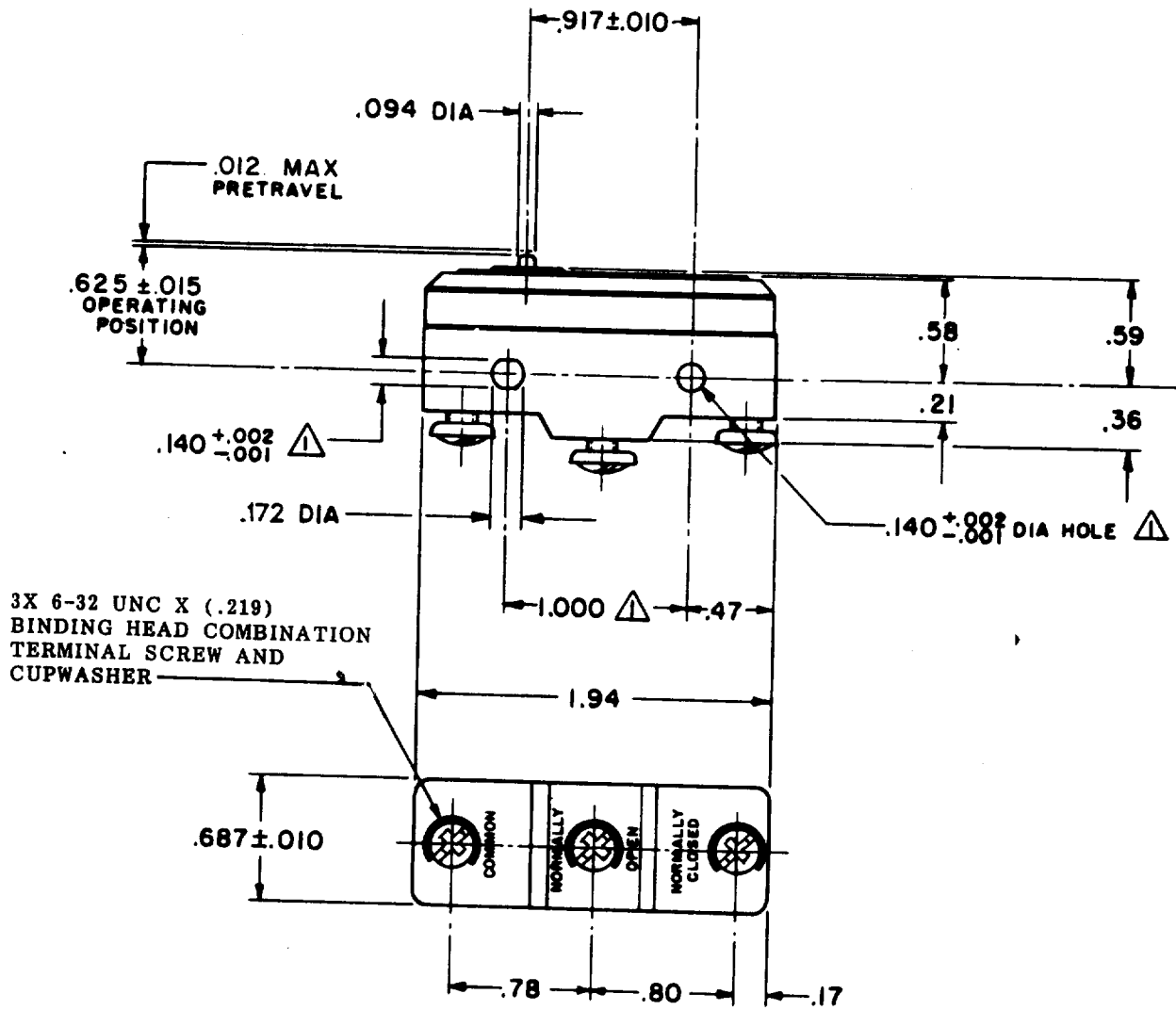


FED. MFG. CODE 91929

BZ-R21-A2
 M
 DRAWING NUMBER
 ISSUE 7
 REVISIONS
 A CO 15200 JPH 3 FEB 64
 B CO30626 D B W 24 MAY 72
 C CO-73287-J J A L 22 NOV 83
 D CO-77589 K D R 29 MAR 94
 CHECK
 14 FEB 64
 LSD
 CHECK
 3 FEB 64
 JPH
 DRAWN
 FO-80376



NOTE -
 ▲ - MOUNTING HOLES WILL ACCEPT PINS OR SCREWS OF .139 MAX DIA ON 1.000 ± .002 CENTERS

THIS DRAWING COVERS A PROPRIETARY ITEM AND IS THE PROPERTY OF MICRO SWITCH, A DIVISION OF MINNEAPOLIS-HONEYWELL REGULATOR CO. THIS DRAWING IS NOT TO BE COPIED OR USED WITHOUT THE APPROVAL OF MICRO SWITCH.

CHARACTERISTICS	ELECTRICAL DATA	SCALE FULL
OPERATING FORCE - - - - 4 OZ. MAX	CONTACT ARRANGEMENT S. P. D. T.	DO NOT SCALE PRINT
RELEASE FORCE - - - - 2 1/2 OZ. MIN	UNDERWRITERS' LAB. INC. LISTED RATING 10A-125, 250 OR 480 VAC -L95- 1/8HP-125 VAC; 1/4HP-250 VAC	UNLESS OTHERWISE NOTED DIMENSIONS ARE IN INCHES
DIFFERENTIAL TRAVEL - - .0002 - .0005		TOLERANCES ARE:
OVERTRAVEL - - - - .005 MIN		ONE PLACE (.9) ± .030 TWO PLACE (.001) ± .015 THREE PLACE (.000) ± .005 ANGLES ±
		WEIGHT .063 LB