

MICRO SWITCH

A DIVISION OF MINNEAPOLIS-HONEYWELL REGULATOR COMPANY
MINNEAPOLIS, MINNESOTA

FED. MFR. CODE 91929

SWITCH - BASIC

CATALOG LISTING

BZ-2RW82212-A2

MBZ-2RW82212-A2

PAGE 1 OF 1

DRAWING NUMBER

8

ISSUE

REPLACES

RELEASE NO.

CHECK

REVISIONS

A	CO	16736	GCH	5 APRIL 62
B	CO	34308	GLH	9 JUL 75
C	CO	73287-E	DHD	5 OCT 93
D	CO	77589	MAM	29 MAR 94
E	CO	093346	DLT	17 SEP 98

CHECK

DRAWN

17 APR 62

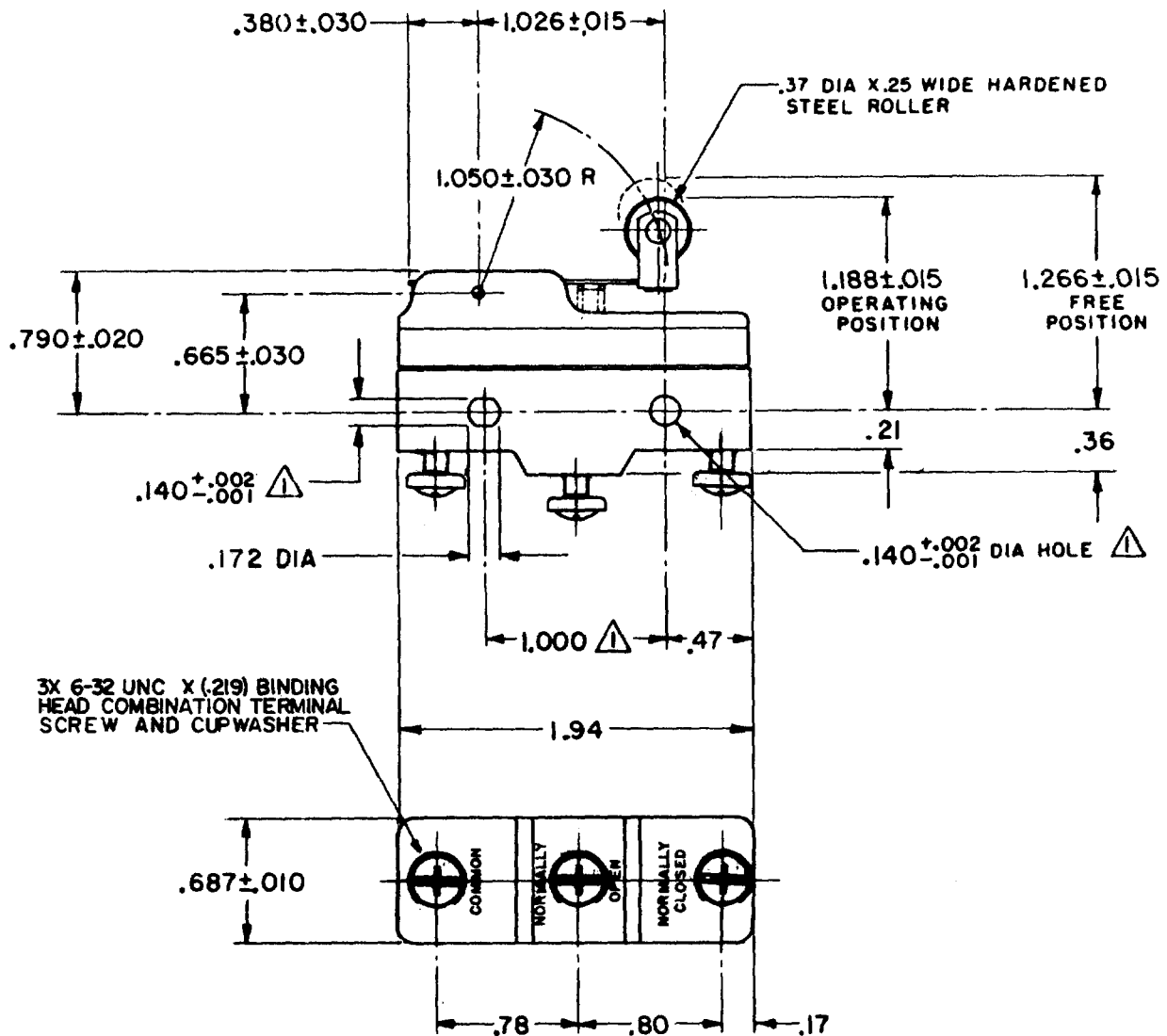
CHECK

DRAWN

5 APRIL 62

GCH

FORMTEK



NOTE
 ▲ MOUNTING HOLES WILL ACCEPT PINS OR SCREWS OF .139 MAX DIA ON 1.000±.002 CENTERS

THIS DRAWING COVERS A PROPRIETARY ITEM AND IS THE PROPERTY OF MICRO SWITCH, A DIVISION OF MINNEAPOLIS-HONEYWELL REGULATOR CO. THIS DRAWING IS NOT TO BE COPIED OR USED WITHOUT THE APPROVAL OF MICRO SWITCH.

CHARACTERISTICS	ELECTRICAL DATA	SCALE FULL
OPERATING FORCE ----- 6 OZ MAX	CONTACT ARRANGEMENT S P D T	DO NOT SCALE PRINT
RELEASE FORCE ----- 1 1/2 OZ MIN	UNDERWRITERS' LAB. INC. LISTED RATING -L96- 15A-125, 250, OR 480 VAC 1/2 A-125 VDC; 1/4 A-250 VDC 1/8 HP-125 VAC; 1/4 HP-250 VAC	UNLESS OTHERWISE SPECIFIED DIMENSIONS ARE IN INCHES
DIFFERENTIAL TRAVEL ----- .003-.020	-L288- -L299- -L306-	TOLERANCES ARE: ONE PLACE (.0) ±.030 TWO PLACE (.00) ±.015 THREE PLACE (.000) ±.005 ANGLES ±
OVERTRAVEL ----- .094 MIN	CE D S 16A 250V ~ T85 5E4	WEIGHT .076 LB