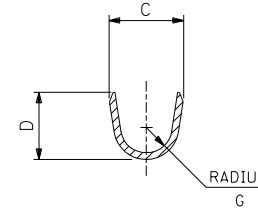
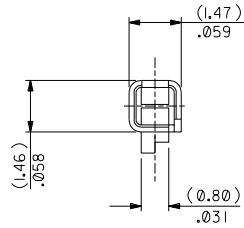
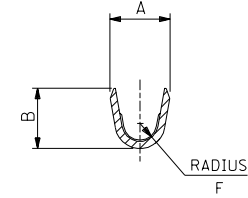


SECTION X-X



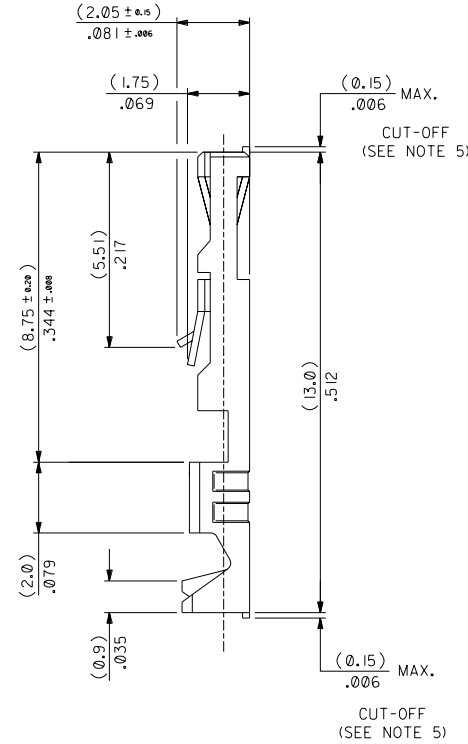
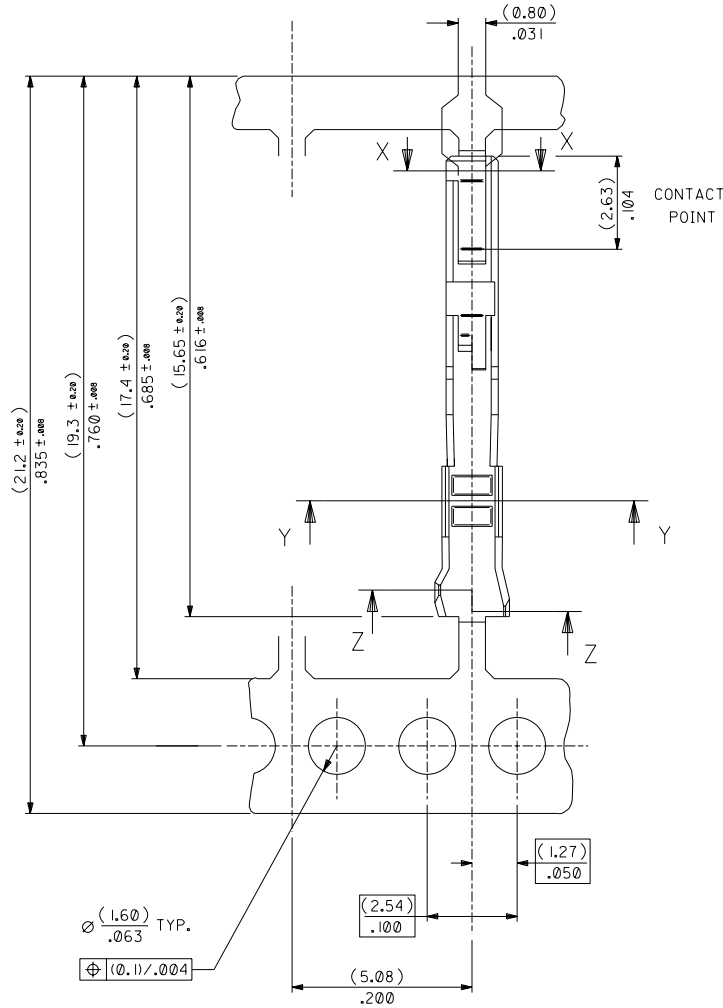
SECTION Z-Z

INSULATION BARREL



SECTION Y-Y

WIRE BARREL



NOTES:

1. MATERIAL -
PHOSPHORE BRONZE CDA 521
THICKNESS: (0.200) / .008
TENSILE STRENGTH: 655-760 N/mm²
PLATING - SEE SHEET 2
2. FOR DIMENSIONS A, B, C, D, F & G
SEE SHEET 2
3. FOR WIRE SIZE & INSULATION DIA
SEE SHEET 2
4. THIS TERMINAL TO MATE WITH
(0.635) / .025 SQUARE PIN
5. MAX BURR AFTER CUT-OFF
(0.025) / .001

FOR PREVIOUS
DRAWING ISSUES
SEE MRI.

CHANGED PLATING SPEC
E2000-0533
99-12-11 TM

REVISIONS

PLACEMENT	DESCRIPTION	DATE
3 PLACE	± .004	
2 PLACE	± .008 ± 0.10	
1 PLACE	± 0.20	

DRWG BY

CHK'D BY

APP'D BY

SCALE

10:1

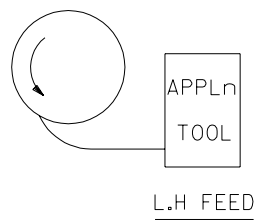
REVISE ONLY ON CAD SYSTEM		SH.	REV.
CAD/CAM FILE NAME SD9019X1.DGN		THIS DRAWING CONTAINS INFORMATION THAT IS PROPRIETARY TO MOLEX INC. & SHOULD NOT BE USED WITHOUT WRITTEN PERMISSION	
TITLE C - GRID III FEMALE CRIMP TERMINAL			
MOLEX EUROPE		SHEET NO. DATE 1 OF 2 27/08/87	
PART NO. SEE CHART	DWG NO. SD-90119	SIZE C	

PART NO. SEE CHART
DWG NO. SD-90119

PART NO. SEE CHART
 DWG. NO. SD-90119

PART No	PLATING	REELING	WIRE SIZE (AWG)	INSULATION RANGE	CRIMP DIMENSIONS					
					WIRE BARREL			INSULATION BARREL		
					A $\pm(0.15)$.006	B $\pm(0.15)$.006	F $\pm(0.15)$.006	C $\pm(0.15)$.006	D $\pm(0.15)$.006	G $\pm(0.15)$.006
90119-0109	A	L.H FEED	22,24	(1.02-1.47) .040-.058	(1.70)	(1.70)	(0.51)	(2.10)	(1.90)	(0.70)
-0110	E				.067	.067	0.20	.083	.075	0.27
-0111	F									
-0120	A		26,28	(0.76-1.22) .030-.048	(1.37)	(1.37)	(0.28)	(2.00)	(1.70)	(0.60)
-0121	E				.054	.054	0.11	.079	.067	0.24
-0122	F									
-2109	A	LOOSE PIECE PARTS	22,24	(1.02-1.47) .040-.058	(1.70)	(1.70)	(0.51)	(2.10)	(1.90)	(0.70)
-2110	E				.067	.067	0.20	.083	.075	0.27
-2111	F									
-2120	A		26,28	(0.76-1.22) .030-.048	(1.37)	(1.37)	(0.28)	(2.00)	(1.70)	(0.60)
-2121	E				.054	.054	0.11	.079	.067	0.24
90119-2122	F									

TYPE	PLATING
A	PRE-PLATED HOT DIP TIN (1.0 to 2.5 um)/.00004 TO .0001
E	(1.27 TO 1.78um)/.00005 TO .00007 NICKEL OVERALL. (0.38 TO 0.64um)/.000015 TO .000025 GOLD ON CONTACT AREA. (3.0 TO 5.0 um)/.00012 TO .0002 TIN/LEAD (90/10) ON TERMINATION AREA.
F	(1.27 TO 1.78um)/.00005 TO .00007 NICKEL OVERALL. (0.76 TO 0.10 um)/.00003 TO .00004 GOLD ON CONTACT AREA. (3.0 TO 5.0 um)/.00012 TO .0002 TIN/LEAD (90/10) ON TERMINATION AREA.



FOR PREVIOUS DRAWING ISSUES SEE MRI.

J SEE SHEET I.

LTR	REVISIONS	THIRD ANGLE PROJECTION												
		DIMENSIONS SHOWN (METRIC) INCH UNLESS OTHERWISE SPECIFIED TOLERANCES: ANGULAR $\pm 2'$												
		<table border="1"> <tr> <th></th> <th>INCH</th> <th>(METRIC)</th> </tr> <tr> <td>3 PLACE</td> <td>$\pm .---$</td> <td></td> </tr> <tr> <td>2 PLACE</td> <td>$\pm .---$</td> <td>$\pm ---$</td> </tr> <tr> <td>1 PLACE</td> <td>$\pm .---$</td> <td>$\pm ---$</td> </tr> </table>		INCH	(METRIC)	3 PLACE	$\pm .---$		2 PLACE	$\pm .---$	$\pm ---$	1 PLACE	$\pm .---$	$\pm ---$
		INCH	(METRIC)											
3 PLACE	$\pm .---$													
2 PLACE	$\pm .---$	$\pm ---$												
1 PLACE	$\pm .---$	$\pm ---$												
	DRAFT WHERE APPLICABLE MUST REMAIN WITHIN DIMENSIONS													

REVISE ONLY ON CAD SYSTEM		SH.	REV.
CAD/CAM FILENAME SD90119X2 DGN	THIS DRAWING CONTAINS INFORMATION THAT IS PROPRIETARY TO MOLEX INC. & SHOULD NOT BE USED WITHOUT WRITTEN PERMISSION		
TITLE C - GRID III FEMALE CRIMP TERMINAL			
MOLEX MOLEX EUROPE		SHEET NO. DATE 20F2 01/09/87	
PART NO. SEE CHART	DWG NO. SD-90119	SIZE B	