



Designers' Choice

IEEE 1394 PLUGS & SOCKETS

HI-SPEED SERIAL BUS — IEEE 1394 SOCKETS

"FIREWIRE"



THE HI-SPEED "JACK" FOR THE 21ST CENTURY

FEATURES

- Snap-In PC tails hold connector in position for soldering
- Tin Lead Plated solder tails for excellent solderability
- Gold Plated contacts for low contact resistance and excellent reliability

SPECIFICATIONS

Shell: Phosphor Bronze
 Insulator: Thermoplastic, Rated UL 94V-0
 Contacts: Phosphor Bronze
 Plating:
 Contact Area: Gold Flash over Nickel
 Solder Tails: Tin Lead over Nickel

ELECTRICAL CHARACTERISTICS

Rated Voltage: 30VAC (RMS)
 Contact Current Rating: 1 Amp DC max.
 Contact Resistance: 15 mΩ
 Insulation Resistance: 1000 MΩ min.
 Dielectric Withstanding Voltage:
 750V AC for 1 minute
 Operating Temperature:
 32°F (0°C) to 104°F (40°C)
 Capacitance: 2pF max.

DESIGN ADVANTAGES

Superfast Data Transfer:
 Current speeds of 100Mbps, 200Mbps and 400Mbps, and roadmapped to 1GB to 3.2 GBps per second

Daisy Chaining: Up to 63 devices, each one acts as an active repeater on the bus, with a maximum of 16 repeats

Port Expansion: Alleviates restriction of limited COM Ports and available IRQ's

Wide Bandwidth: Operates in asynchronous or isochronous data streams. Digital interface designed for high speed applications for PC peripherals, consumer electronics and communications.

Simple Connections: True Plug and Play no jumpers, DIP Switches or IRQ's to set

Hot Swapping: Allows peripherals to be connected or disconnected without turning off computer

Highly Versatile Bus: One bus can handle a variety of devices operating at different speed classes for true backwards compatibility

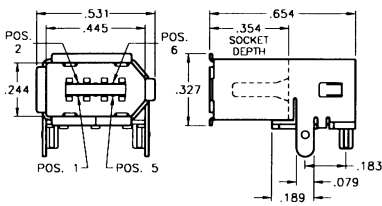
Standard Digital Interface: Allows consumer electronics and computer devices to communicate together on one interface

DEVICE APPLICATIONS

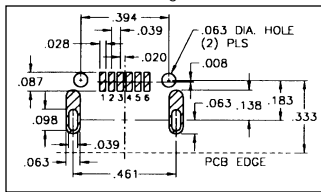
- Broadcast TV
- Cable TV
- Digital Camcorders
- Digital Cameras & VCRs
- Computers & Hard Disks
- DVD Players
- Printers & Monitors
- Stereos

SURFACE MOUNT

HORIZONTAL



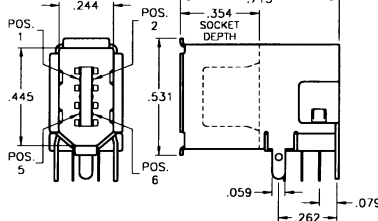
Mounting Detail



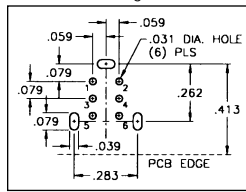
CAT. NO. 927

THRU-HOLE MOUNT

UP-RIGHT



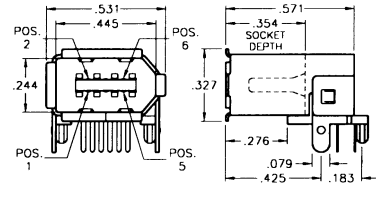
Mounting Detail



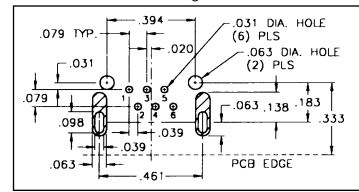
CAT. NO. 930

THRU-HOLE MOUNT

HORIZONTAL



Mounting Detail



CAT. NO. 929

IEEE 1394 PLUG

"FIREWIRE"



FEATURES

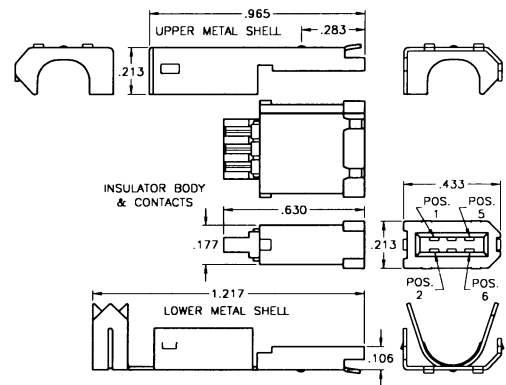
- Modular design allows easy and fast assembly of components
- Integrated strain relief - crimps to wire insulation
- Tin Lead Plated solder tails for excellent solderability
- Gold Plated contacts for low contact resistance and excellent reliability

SPECIFICATIONS

Shell: Phosphor Bronze
 Insulator: Thermoplastic, Rated UL 94V-0
 Contacts: Phosphor Bronze
 Plating:
 Contact Area: Gold Flash over Nickel
 Solder Tails: Tin Lead over Nickel

ELECTRICAL CHARACTERISTICS

Contact Resistance: 30mΩ max.
 Insulation Resistance: 100 MΩ min.
 Withstanding Voltage: 500V ± 50V DC
 Operating Temperature: 32°F (0°C) to 104°F (40°C)



CAT. NO. 928 (Supplied Unassembled)