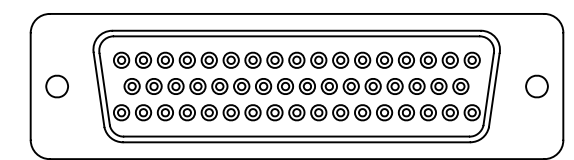
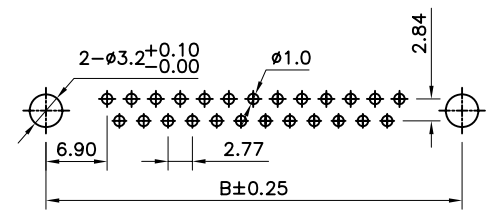
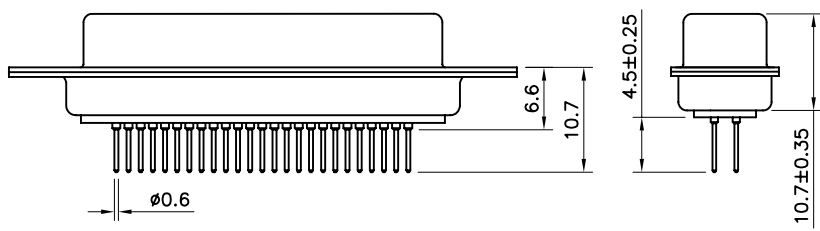
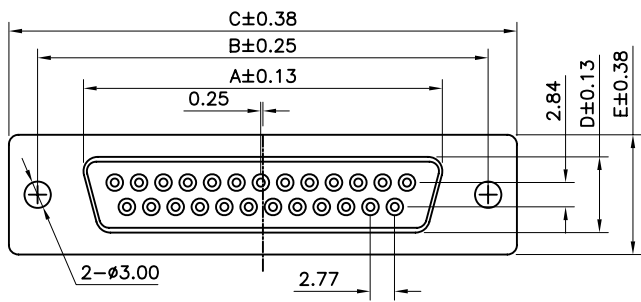


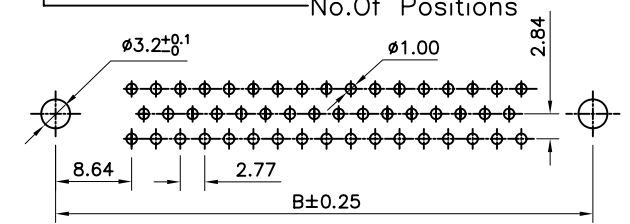
Pos	A	B	C	D	E
9	16.33	24.99	30.81	7.90	12.50
15	24.66	33.32	39.14	7.90	12.50
25	38.38	47.04	53.04	7.90	12.50
37	54.84	63.50	69.32	7.90	12.50
50	52.43	61.11	66.93	10.74	15.37



50 POSITIONS



P.C. Board Layout
(9,15,25,37 Positions)



P.C. Board Layout
(50 Positins)

Specifications:

Current Rating:3.0A AC/DC

Voltage Rating:250V AC/DC

Contact Resistance:30m ohm. max.

Insulation Resistance: 5,000M ohm. min.

Withstanding Voltage:1,000V AC For One Minute

Operating Temperature Range:-40°C ~ +85°C

Material and Finish

Insulator:High Temp. Plastic (PBT UL 94V-0)

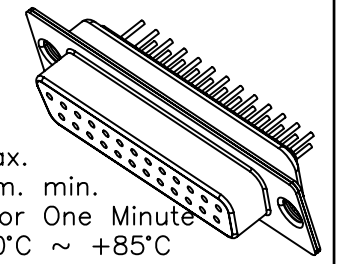
Contact:Copper Alloy Nickel Undercoated
,Selective Gold plated

Shell:Metal Iron With Tin plated

How To Order

5502-XXSA-XX-XX-XXF1

- Lead Free
- Blank:White(Standard Color)
- BK:Black; BU:Blue
- Blank:Standard type
- CS:Rear Rivet
- CC:Front Rivet
- BR:Board Lock-nut Rivet
- BRJ:Hex Screw+Hex Nut
- 01:Gold Plated
- 02:Selective Gold
- SA:Stamp Pin Female
- No.Of Positions



RoHS Compliant

REV	DATE	FILE	BY
F			
E			
D			
C	09-Oct-2006	ECN-CN061002	Wendy
B	13-May-2006	ECN-CN060507	Wendy
A	11-Aug-2005	(PC0052)	Cel King

DRAWN: Cel King
CHECKED: Jeremy Liu
APPROVAL: Mike Wu

GENERAL TOLERANCE: .X=±0.2 .XX=±0.15
UNIT: MM
SCALE: 1:1
SHEET: 1 / 1
PROJECTION:

繼德工業股份有限公司 Neltron Industrial Co., Ltd.	
DESCRIPTION: D-SUB Standard Dip PCB Stamp Pin Female	SIZE A4
PART NO: 5502-XXSA-XX-XX-XXF1	