

Spezifikation für Freigabe / specification for release

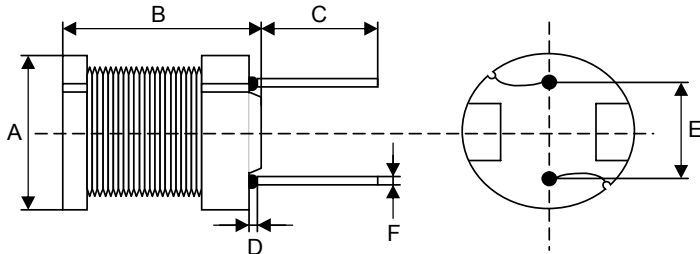
Kunde / customer : _____
 Artikelnummer / part number : **744772102**
 Bezeichnung : **Tonneninduktivität WE-TI**
 description : **Filter Choke WE-TI**

LF



DATUM / DATE : 2006-05-05

A Mechanische Abmessungen / dimensions:



Typ "L"		
A	7,8 ± 0,5	mm
B	9,5 ± 0,5	mm
C	5,0 ± 1,0	mm
D	3,0 max.	mm
E	5,0 ± 0,5	mm
F	∅ 0,7 ref	mm

B Elektrische Eigenschaften / electrical properties:

Eigenschaften / properties	Testbedingungen / test conditions		Wert / value	Einheit / unit	tol.
Leerlauf-Induktivität / inductance	1 kHz / 0,25V	L_0	1000,0	μH	±10%
DC-Widerstand / DC-resistance	@ 20° C	$R_{DC \text{ max.}}$	1,840	Ω	max.
Nennstrom / nominal current		I_N	0,30	A	max.
Sättigungsstrom / saturating current	 $\Delta L/L_0$ -10%	I_{sat}	0,50	A	typ.
Eigenres.-frequenz / Self-resonance freq.		SRF		MHz	typ.

C Lötpad / soldering spec.:

D Prüfgeräte / test equipment:

HP 4274 A & HP E3633 A für/for L_0/L_N und/and Q
HP 34401 A für/for I_{DC} und/and R_{DC}

E Testbedingungen / test conditions:

Luftfeuchtigkeit / humidity:	33%
Umgebungstemperatur / temperature:	+20°C

F Werkstoffe & Zulassungen / material & approvals:

Basismaterial / base material:	Ferrit/ferrite
Draht / wire:	Class F

G Eigenschaften / general specifications:

Betriebstemp. / operating temperature:	-40°C - + 125°C
Umgebungstemp. / ambient temperature:	-40°C - + 85°C
It is recommended that the temperature of the part does not exceed 125°C under worst case operating conditions.	

Freigabe erteilt / general release:	Kunde / customer		
Datum / date	Unterschrift / signature		
	Würth Elektronik		
	SSt	Update Temp	06-05-05
	SST	RoHS Update	05-01-12
	SST	Version 1	04-09-09
Geprüft / checked	Kontrolliert / approved		
	Name	Änderung / modification	Datum / date

This electronic component is designed and developed with the intention for use in general electronics equipments. Before incorporating the components into any equipments in the field such as aerospace, aviation, nuclear control, submarine, transportation, (automotive control, train control, ship control), transportation signal, disaster prevention, medical, public information network etc. where higher safety and reliability are especially required or if there is possibility of direct damage or injury to human body. In addition, even electronic component in general electronic equipments, when used in electrical circuits that require high safety, reliability functions or performance, the sufficient reliability evaluation-check for the safety must be performed before use. It is essential to give consideration when to install a protective circuit at the design stage.

Würth Elektronik eiSos GmbH & Co. KG

D-74638 Waldenburg · Max-Eyth-Strasse 1 - 3 · Germany · Telefon (+49) (0) 7942 - 945 - 0 · Telefax (+49) (0) 7942 - 945 - 400
<http://www.we-online.com>