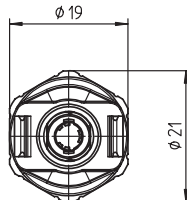
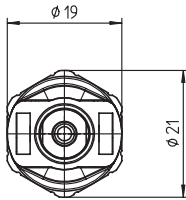
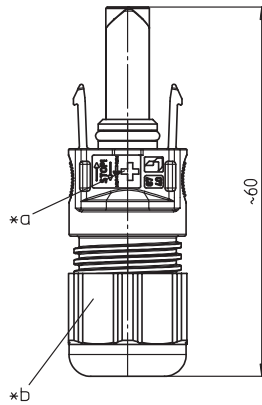
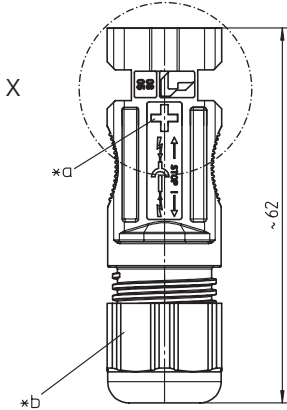




LC4-CP 30

LC4-CP 31



LC4-CP 30
LC4-CP 31

Photovoltaic connector, field-attachable, with crimp contact
LC4-CP 30: plug
LC4-CP 31: socket

1. **Temperature range** -40 °C/+90 °C
(+110 °C upper limit temperature)
 2. **Materials**
Body/housing PPE/PS, V0 according to UL 94
halogen-free, UV-resistant
Contact pin/bush CuZn, pre-nickelated and tinned
Seal NBR
Cap nut PET GF, V0 according to UL 94
 3. **Mechanical data**
Insertion force¹ ≤ 20 N
Withdrawal force¹ ≥ 10 N
Retaining force of locking latches² ≥ 90 N
Mating cycles 50
Tightening torque cap nut 2-3 N
Mating with photovoltaic connectors LC4
Protection degree³ IP 67
Connectable conductors crimp terminal
Section LC4-CP ... 2.5 2.5 mm² (AWG 14)
Section LC4-CP ... 4.0 4.0 mm² (AWG 12)
Section LC4-CP ... 6.0 6.0 mm² (AWG 10)
 4. **Electrical data (at T_{amb} 20 °C)**
Contact resistance² ≤ 5.0 mΩ
Rated current LC4-CP ... 2.5 22 A at T_{amb} 85 °C
Rated current LC4-CP ... 4.0 35 A at T_{amb} 85 °C
Rated current LC4-CP ... 6.0 40 A at T_{amb} 85 °C
Rated voltage⁴ 1000 V DC (UL = 600 V DC)
Overvoltage category⁴ III (8 kV)
Material group⁴ IIIa (CTI ≥ 250)
Creepage distance ≥ 28.2 mm
Clearance ≥ 28.2 mm
Insulation resistance > 10 GΩ
Protective class II
- ¹ measured with a polished steel gauge, nominal thickness 4.0 mm
² measured with a proper counterpart
³ 1 m/24 h, only in mated condition with a proper counterpart
⁴ IP X8 requirements under agreement between manufacturer and user according to DIN EN 60664/IEC 60664

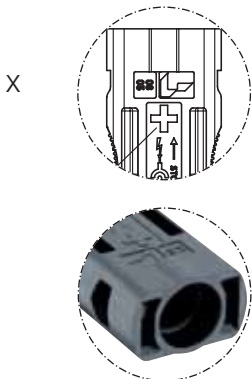


®

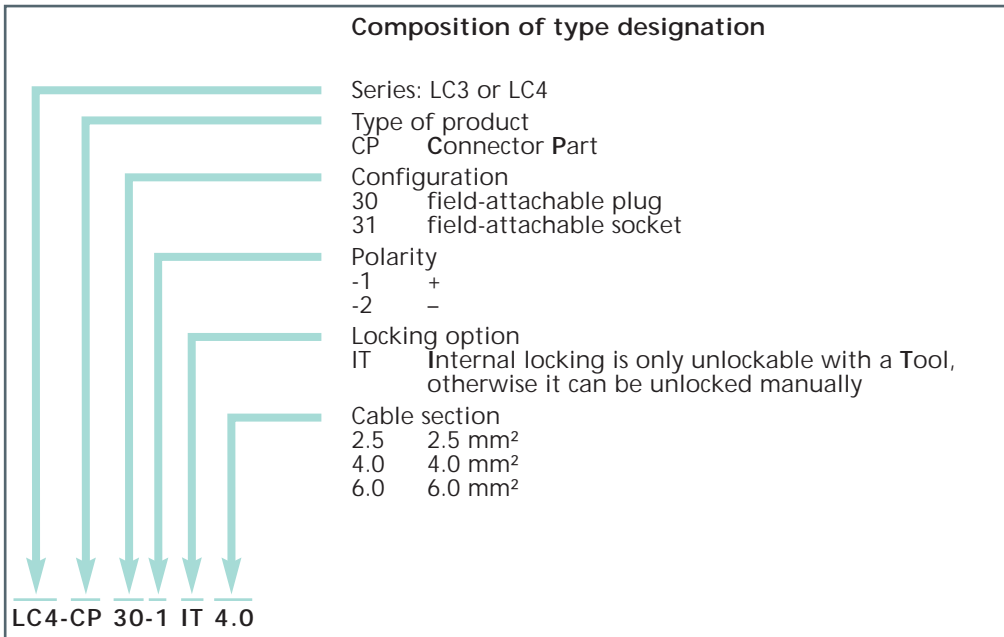


Approvals under preparation

LC4-CP 30 IT



*a marking + on LC3-CP ...-1, - bei LC3-CP ...-2



Features and benefits

- can be assembled anywhere on-site
- convenient for smaller installations
- complements the wiring concept with pre-assembled, overmolded connectors, like for feeding lines
- two locking options: unlockable either manually or only with a tool, according to NEC 2008 NFPA 70
- quick and easy assembly
- only one tool necessary for 2,5 mm², 4 mm² and 6 mm²
- rugged and durable for permanently reliable system operation
- with contact-voltage protection
- highest protection degree IP 68
- UV and ozone-resistant
- halogen-free

LC4®

Typical examples

Designation	Description	Polarity	Section (mm ²)
LC4-CP 30-1 2.5	field-attachable plug	+	2.5
LC4-CP 30-2 4.0	field-attachable plug	-	4.0
LC4-CP 30-1 6.0	field-attachable plug	+	6.0
LC4-CP 30-1 IT 6.0	field-attachable plug unlockable only with a tool	+	6.0
LC4-CP 31-2 4.0	field-attachable socket	-	4.0

Package unit: 50 pieces in a cardboard box