

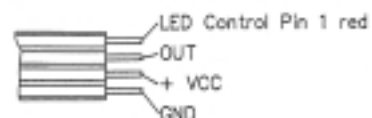
<p>The capacitive switch is a robust electronic switch which works on contact without an actuating force. A custom-made version can be offered for installation under glass.</p>			
<b>Standard Versions</b> Other types, installation under glass and laser labeling are available on inquiry		M16 CSE capacitive switch	
<b>Features</b>			
<b>Housing material</b>		aluminum	
<b>Terminals</b>		Wire (210 mm)	
<b>Nut and O-ring seal</b>		All switches are supplied with nut and O-ring seal	
<b>Part numbers</b>			
<b>Ring illumination</b>	LED*1	<b>red</b>	<b>green</b>
<b>Switching type</b>	Latching action	<b>1243.1218.1.1</b>	<b>1243.1218.2.1</b>
	Momentary action	<b>1243.1318.1.1</b>	<b>1243.1318.2.1</b>
	Impulse action	<b>1243.1118.1.1</b>	<b>1243.1118.2.1</b>
<b>Dimensions</b>			

## TECHNICAL DATA

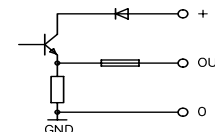
### Electrical data

Switching voltage max. (poled)	7 – 24 VDC
Breaking capacity max.	250 mW
Switching current max.	175 mA
Isolation resistance (housing)	1,5 kV
Initial contact resistance (ON = in action)	7,5 Ω
NO make impulse time (only for impulse type)	750 ms
Lifetime (at rated breaking capacity)	1 Mio.
Input current is depending on supply voltage at (irrespective of LEDs)	5V 12V 24V

7 – 24 VDC
250 mW
175 mA
1,5 kV
7,5 Ω
750 ms
1 Mio.



Ausgang: npn, p-schaltend



2 mA not in action / 3 mA in action
2 mA not in action / 6 mA in action
4 mA not in action / 8 mA in action

### Mechanical data

Min. actuating force	none
Degree of protection	IP 67

### Climatic data

Operation and storage temperature	-20°C to +85°C
-----------------------------------	----------------

\*1 ring illumination of LED run by distribution voltage

Changes for technical improvement are subject to change.