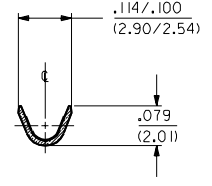
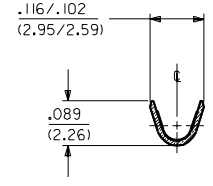
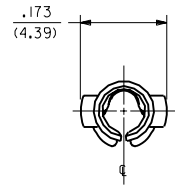
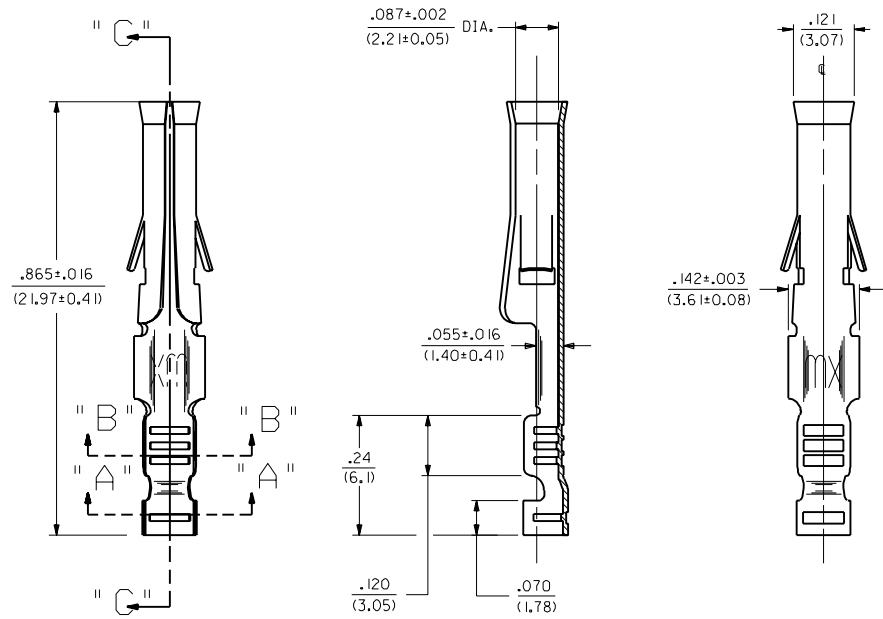


PART NO.	ENG. NO.
02-09-1138	2871-A(P90 I)
02-09-1139	2871-A(P90 I)L
-	-
-	-
-	-



SECTION "A - SECTION " B -



SECTION " C - C "

LEGEND

2871-A(\*\*\*\*)\*  
 P=PREPLATE BLANK=POSTPLATE  
 FINISH CODE  
 FORM BLANK=STD. CHAIN L=LOOSE

- NOTES:
1. TERMINAL FOR USE WITH .093/(2.36) SERIES HOUSINGS AND WILL ACCEPT 22 - 24 AWG WIRE.
  2. INSERTION FORCE: 3.5 LBS. MAX. WHEN TERMINAL IS INSERTED INTO AN .093 SERIES HOUSING.
  3. CONTACT RETENTION: 20 LBS. MIN. FROM HOUSING.
  4. THIS PART CONFORMS TO PRODUCT SPEC. 02-09.

FINISH CODES:  
 901 HOT TIN DIP .000020/(0.0005 I) MIN.

MATERIAL:  
 CARTRIDGE BRASS, ALLOY #C26000,  
 .010/(0.25) THICK, SPRING TEMPER



B	REVISE PER ECR US 0799 GC 2/14/95	RW
A	FINAL RELEASE ECR US 0857 GC 6/11/92	RW

DIMENSIONS SHOWN METRIC (INCH UNLESS OTHERWISE SPECIFIED TOLERANCES: ANGULAR ± 1/2°)		▽ = 0	▽ = 0	REVISE ONLY ON CAD SYSTEM	
TITLE CRIMP TERM., FEMALE .093/(2.36) DIA. FOR 22 - 24 AWG WIRE		SHEET NO. 1 OF 1		DATE 6/11/92	
MOLEX INCORPORATED LITTLE ROCK, AR 60532 U.S.A.		PART NO. SD-2871-A		DRWG. NO. SD-2871-A	
DRAWN BY: GWF		CHKD. BY: RW		FILE NAME: SD2871X1.DWG	
APP'D. BY: GWF		SCALE: 6 : 1		DIV. CP	