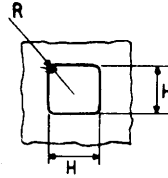
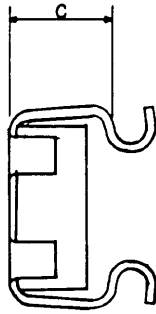
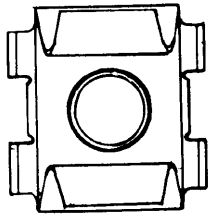


CAGE NUTS

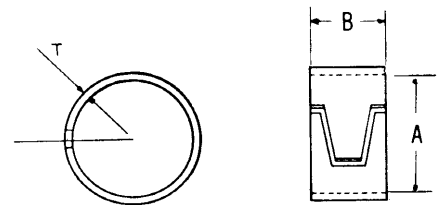
CAGE TYPE	PANEL RANGE	NUT SIZE	H	R	C	THREAD SIZE	PANEL RANGE	PANEL RANGE
							0.71/1.63	1.83/2.64
NARROW	0.71/1.63	11.1 SQ x 4.8 TH	9.53/9.65	0.81	5.8			
WIDE	1.83/2.64	11.1 SQ x 4.8 TH	9.53/9.65	0.81	5.8			



	PANEL RANGE	PANEL RANGE
No. 10 U.N.C.	CN/1UC/N	CN/1UC/W
1/4 U.N.C.	CN/4UC/N	CN/4UC/W
No. 10 U.N.F.	CN/1UF/N	CN/1UF/W
1/4 U.N.F.	CN/4UF/N	CN/4UF/W
M5 x 0.8 ^①	CN/5M/N ^②	CN/5M/W ^②
M6 x 1.0 ^③	CN/6M/N ^④	CN/6M/W ^④

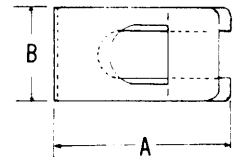
COMPRESSION RINGS

PART No. /FINISH CODE	HUB DIA	A	B	T	
CR/5003/R	SCB 1794	6.40	5.94	4.1	0.46
CR/5005/R	SCB 2246	8.00	7.67	6.3	0.46
CR/5009/R	SCB 2045	8.79	8.08	6.3	0.36
CR/5004/R	SCB 1609	9.58	9.14	6.3	0.61
CR/5008/R	SCB 1730	9.58	9.14	6.3	0.71
CR/5006/R	SCB 2186	9.58	8.97	4.1	0.71
CR/5001/R	SCB 1828	11.10	10.59	7.9	0.81
CR/5002/R	SCB 1937	12.78	11.73	6.3	0.61
CR/5007/R	SCB 2125	14.27	12.70	6.3	0.61



CLEVIS PIN RETAINING CLIPS

PART No. /FINISH CODE	A	B	E	T
CP/B1/A	23.2	14.0	4.8	0.51



OTHER SIZES AVAILABLE

- ① FARNELL ORDER CODE - 3294330
- ② _____ " _____ - 3294341
- ③ _____ " _____ - 3294353
- ④ _____ " _____ - 3294365
- ④ _____ " _____ - 3294304
- ④ _____ " _____ - 3294328



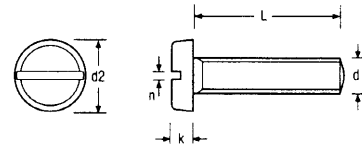
SUPPLIES
 30 LOCK LANE
 CASTLEFORD
 WEST YORKSHIRE
 WF10 2JZ
 TEL. 01977 603214

FARNELL ORDER CODE - 3294286
 3294298
 3294304
 3294328

SCF
 SUPPLIES
 30 LOCK LANE
 CASTLEFORD
 WEST YORKSHIRE
 WF10 2JZ
 TEL. 01977 603214

**STEEL MACHINE SCREWS
 METRIC SLOTTED PAN HEAD
 BRIGHT ZINC PLATED**

BS 4183



All dimensions are nominal in mm.

d	M 2	M 2.5	M 3	M 3.5	M 4
d2	3.85	4.85	5.85	6.82	7.82
k	1.13	1.43	1.73	2.03	2.33
n	0.73	0.73	0.93	0.93	1.13

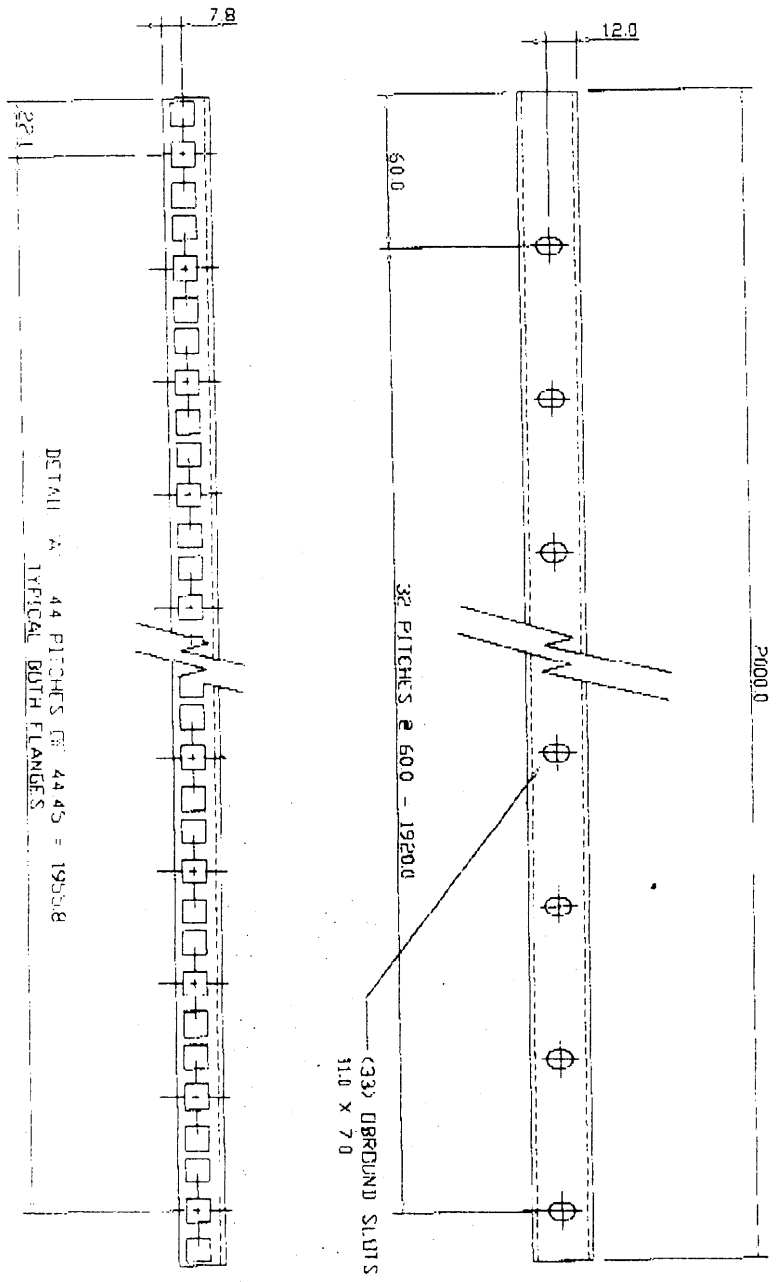
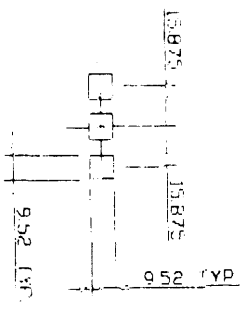
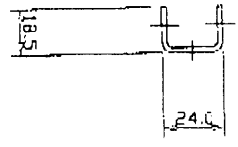
Length L	M 2			M 2.5			M 3			M 3.5			M 4		
	Price Per 1000	Qty Per Box	Qty Per Outer	Price Per 1000	Qty Per Box	Qty Per Outer	Price Per 1000	Qty Per Box	Qty Per Outer	Price Per 1000	Qty Per Box	Qty Per Outer	Price Per 1000	Qty Per Box	Qty Per Outer
4	33.38	2,000	36,000												
5	21.04	2,000	36,000	16.45	2,000	36,000	16.69	2,000	36,000				20.80	2,000	24,000
6	16.59	2,000	36,000	13.67	2,000	36,000	11.13	2,000	36,000	15.00	2,000	36,000	15.48	2,000	24,000
8	14.51	2,000	36,000	10.84	2,000	36,000	9.19	2,000	36,000	12.09	2,000	36,000	12.58	2,000	24,000
10	15.24	2,000	36,000	11.61	2,000	36,000	9.43	2,000	24,000	12.58	2,000	24,000	13.06	1,000	12,000
12	15.96	2,000	24,000	12.09	2,000	24,000	9.68	2,000	24,000	13.06	1,000	24,000	13.55	1,000	12,000
16				12.58	2,000	24,000	10.40	1,000	12,000	14.03	1,000	12,000	14.51	1,000	8,000
20				13.55	1,000	24,000	11.61	1,000	12,000	15.00	1,000	8,000	15.00	1,000	8,000
25							15.96	1,000	12,000	19.19	500	8,000	17.66	500	6,000
30													21.77	500	6,000
40													31.44	250	3,000

d	M 5	M 6	M 8	M 10
d2	9.82	11.79	15.79	19.74
k	2.93	3.51	4.71	5.91
n	1.39	1.79	2.19	2.69

Length L	M 5			M 6			M 8			M 10		
	Price Per 1000	Qty Per Box	Qty Per Outer	Price Per 1000	Qty Per Box	Qty Per Outer	Price Per 1000	Qty Per Box	Qty Per Outer	Price Per 1000	Qty Per Box	Qty Per Outer
6	21.16	1,000	12,000									
8	17.19	1,000	12,000									
10	15.28	1,000	12,000	25.69	500	6,000						
12	16.54	1,000	8,000	26.14	250	4,500						
16	17.89	500	6,000	27.83	250	3,000	59.50	200	2,400			
20	19.80	500	6,000	30.01	250	3,000	64.00	200	1,600	168.93	100	1,600
25	21.66	500	4,000	33.39	250	3,000	67.97	200	1,600	176.56	100	800
30	25.68	250	3,000	35.72	200	2,400	72.71	100	1,200	183.92	100	800
35	31.46	250	2,000	40.68	200	1,600						
40	41.04	250	2,000	43.30	200	1,600	81.71	100	1,200	211.07	50	800
45				49.83	100	1,600						
50	49.92	100	1,800	56.60	100	1,800	102.17	50	900	159.15	50	400

FARNELL ORDER CODE - 3294262

SEE WELD PROVISIONS
 SEE MET SPEC
 SEE ORDER FORM



DETAIL A: 44 PITCHES @ 44.45 = 1950.8
 TYPICAL BOLT FLANGES

(33) ROUNDED SLITS
 31.0 X 7.0

32 PITCHES @ 500 - 19200

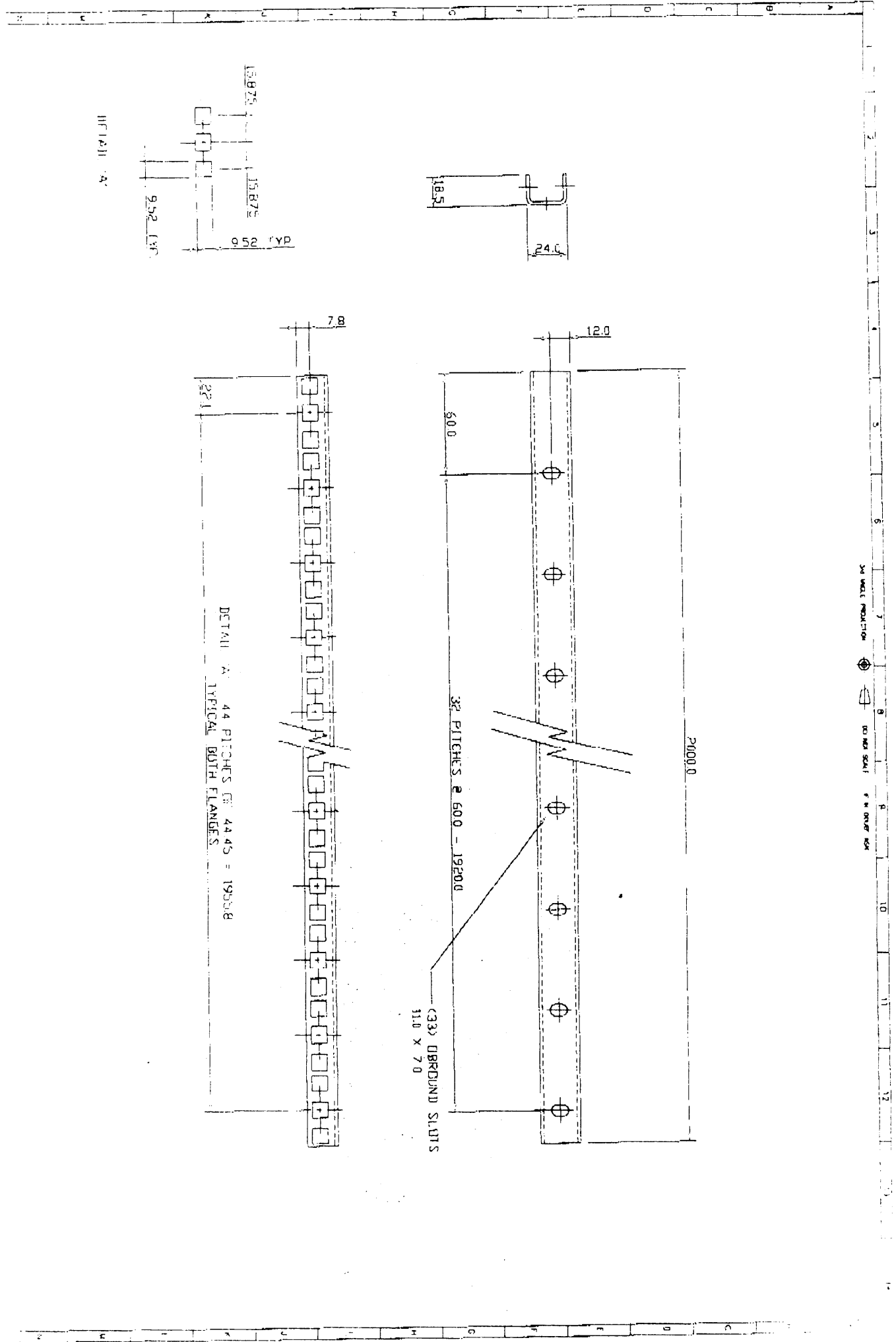
2000.0

7.8

12.0

50.0

22.1



FARNELL ORDER CODE - 3294250

SEE MODEL PRODUCTION FOR NOTATION

