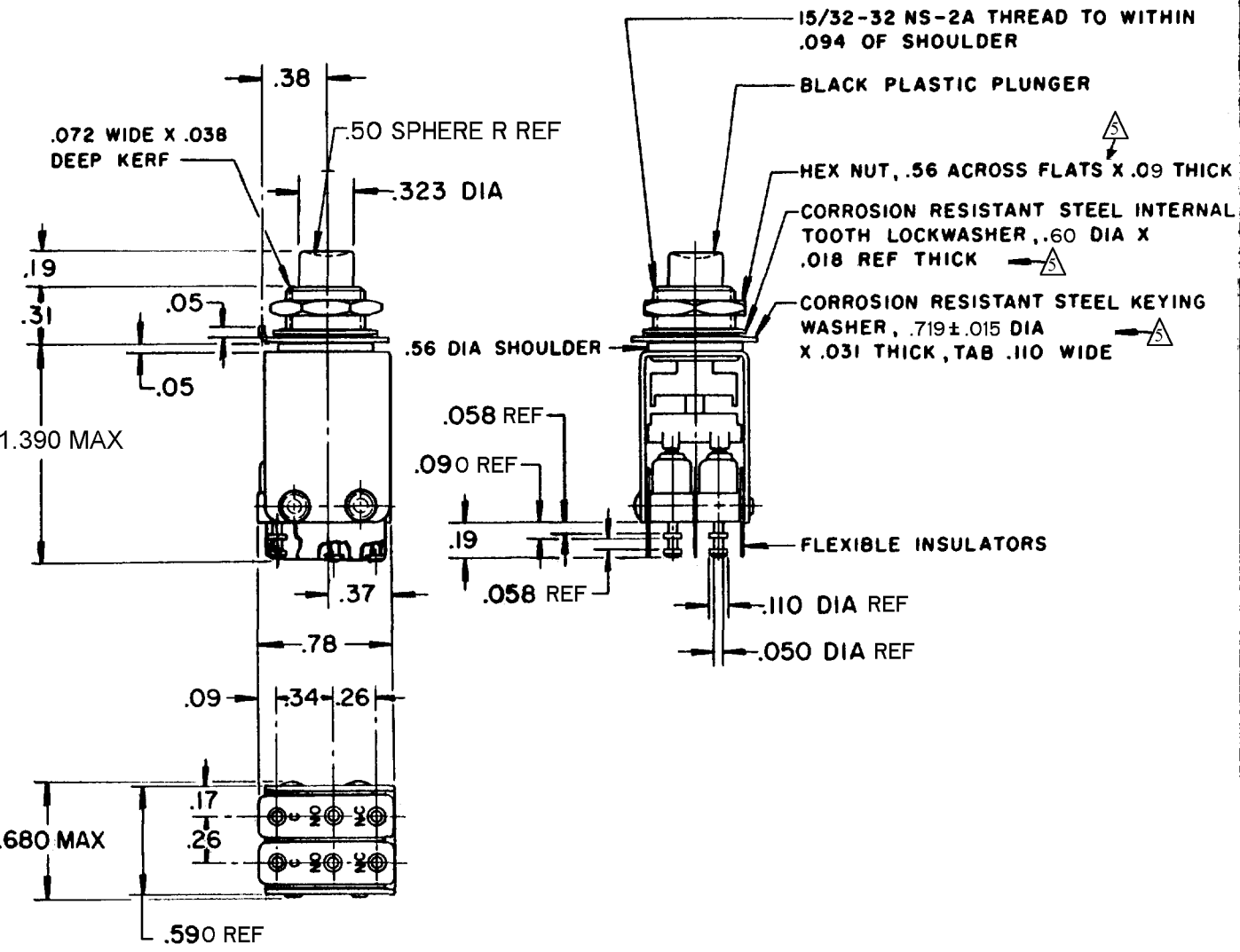


CATALOG LISTING  
**82PB19-T2**  
PAGE 1 OF 1  
ISSUE **9**  
REPLACES SR 8701  
RELEASE NO. 09APR08  
CHECK ASD  
REVISIONS  
A CO14601 S D 11 APR 60  
B CO15520 K L B 31 JULY 61  
C CO20521 W E G 22 FEB 67  
D CO92699 J A K 12 MAR 98  
CO-93593 P P F 29 OCT 98  
D CO-94273 G J W 15 APR 99  
E CO18511 SV 23 FEB 06  
F 0038194 PK 09APR08  
DRAWN RASTER  
CHECK M B F 22 DEC 59



- NOTES
- 1 - UNIT INCLUDES CAT.LIST.311SM TYPE BASIC SWITCH (2)
  - 2 - TERMINALS ARE PLATED FOR SOLDERING
  - 3 - SWITCHES DO NOT NECESSARILY OPERATE SIMULTANEOUSLY
  - 4 - ALTERNATE ACTION MECHANISM (PUSH-ON, PUSH-OFF ACTUATION)
- ⚠ MOUNTING HARWARE FURNISHED UNASSEMBLED

THIS DRAWING COVERS A PROPRIETARY ITEM AND IS THE PROPERTY OF MICRO SWITCH, A DIVISION OF MINNEAPOLIS-HONEYWELL REGULATOR CO. THIS DRAWING IS NOT TO BE COPIED OR USED WITHOUT THE APPROVAL OF MICRO SWITCH.

CHARACTERISTICS	ELECTRICAL DATA	SCALE -
OPERATING FORCE --- 35 OZ APPROX	CONTACT ARRANGEMENT S P D T (2)	DO NOT SCALE PRINT
	250 VAC --- 5 AMP 30 VOLTS DC RATING INDUCTIVE --- SEA LEVEL --- 3 AMP 50,000 FT. --- 2.5 AMP RESISTIVE --- SEA LEVEL --- 5 AMP 50,000 FT. --- 5 AMP MAXIMUM INRUSH --- 24 AMP	UNLESS OTHERWISE SPECIFIED DIMENSIONS ARE IN INCHES <b>TOLERANCES ARE:</b> ONE PLACE (.0) ±.030 TWO PLACE (.00) ±.015 THREE PLACE (.000) ±.005 ANGLES ±
		WEIGHT