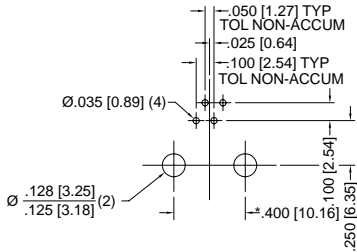


Variations

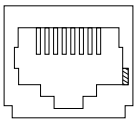
Footprint Configuration

Four-Contact, Six-Position Unshielded

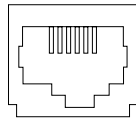


Keying Options

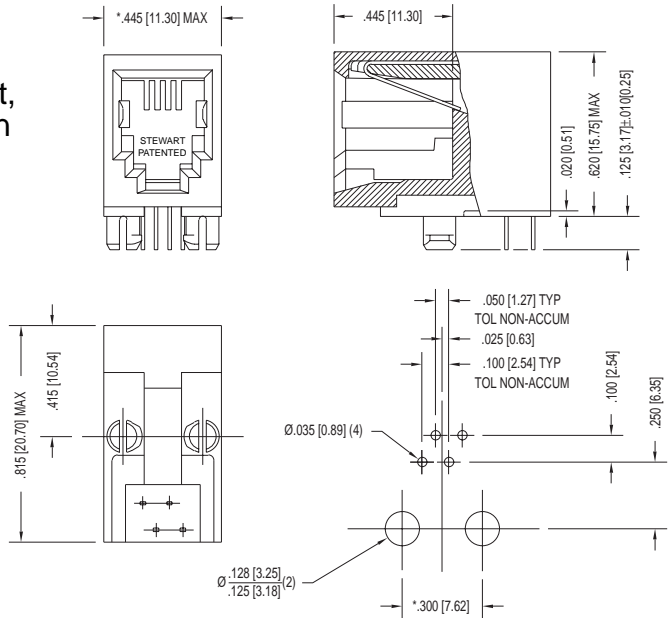
K1-Key



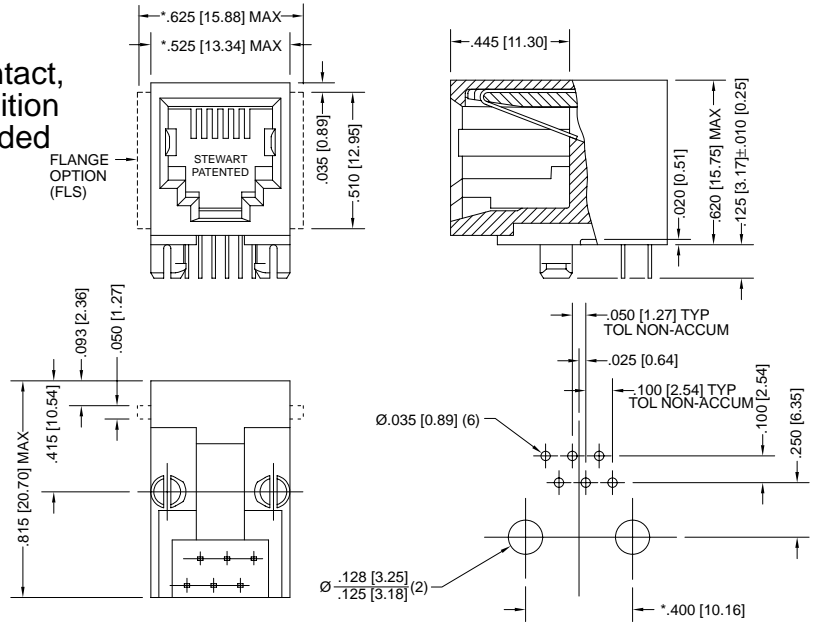
OST (MMJ)



Four-Contact, Four-Position Unshielded



Six-Contact, Six-Position Unshielded



*Dimension is central about center line.

Quick Reference Chart

Description				Options				
	Series	Contacts Inserted	Contact Positions	Flange Options			Keying Options	
				FLS	NF	F	K1	OST (MMJ)
RJ-11 ¹	63	4	4		●			
	63	4	6	●	●			●
	63	6	6	●	●			●
RJ-45 ¹	63	8	8	●	●	●	●	

¹Typical applications.

Note: Configurations shown are the most common for typical applications.

For availability of other configurations not listed, consult Stewart.

All dimensions are in inches with metric values in brackets.

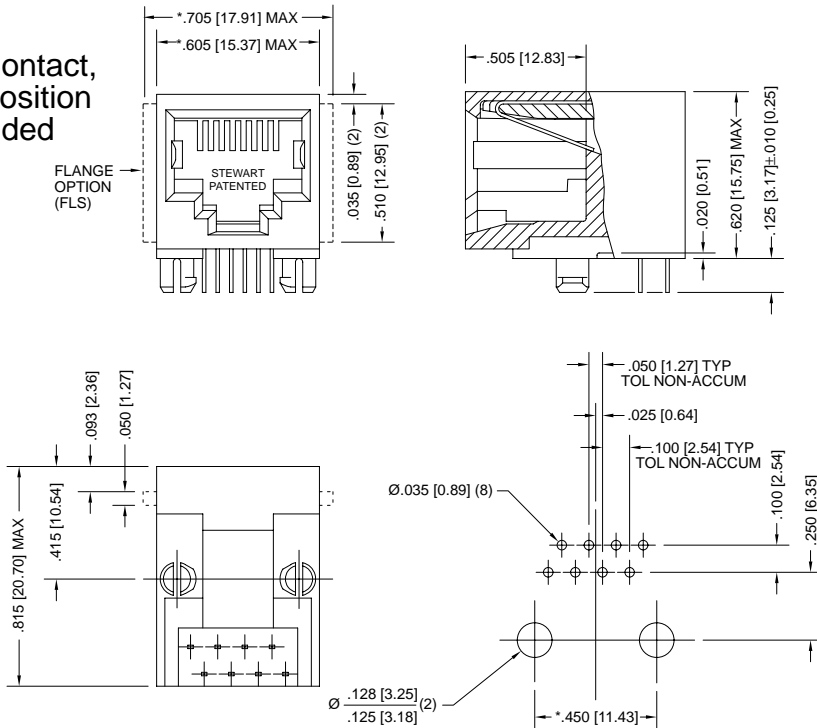
PC-Mount, Modular Jacks

• Unshielded

63 Series

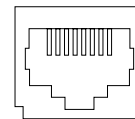
Variations

Eight-Contact, Eight-Position Unshielded

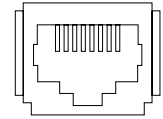


Flange Options

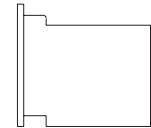
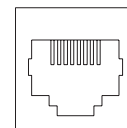
No Flange (NF)



Panel Stop (FLS)



Full Flange (F)

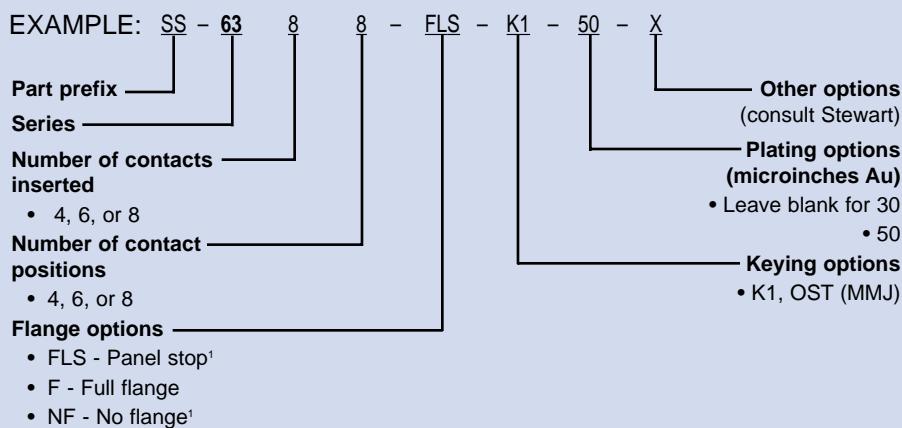


Front View

Side View

*Dimension is central about center line.

How to Order



¹For 63 Series six-position jacks, use 1-FLS for panel stop and 1-NF for no flange. All dimensions are in inches with metric values in brackets.